

DURABLE CROSSWALK MARKING
68+90 LT-RT

DURABLE AND TEMPORARY 4" WHITE LINE (TYPE I TAPE)
 REV 65+62, 15' RT - 68+64, 15' RT 68+79
 REV 65+62, 5' RT - 68+64, 5' RT 68+79
 REV 65+62, 16' LT - 68+64, 16' LT 68+81
 69+64 REV 69+54, 5' RT - 70+16, 5' RT
 70+17

DURABLE AND TEMPORARY 4" YELLOW LINE (TYPE I TAPE)
 REV 65+62, 5' LT - 68+64, 5' LT 68+81
 REV 69+54, 5' LT - 70+16, 5' LT
 69+66

DURABLE AND TEMPORARY 24" STOP BAR (TYPE I TAPE)
 68+61 REV 68+64, 16' RT - 68+64, 5' LT 68+61
 REV 70+16, 21' RT - 70+16, 5' LT
 18
 69+64 4' LT - 69+64 17' LT
 69+35 25' RT - 69+55 25' RT

REMOVING SIGNS
AS SHOWN 4

ERECTING SALVAGED SIGNS
AS SHOWN 3

NOTE: ALL TEMPORARY MARKINGS SHALL BE TEMPORARY PAINT.

APPROXIMATE AREA OF ANEMONE MULTIFIDA FROM OCT. 20, 1986 MAP BY JENKINS & WARSHAW
DO NOT DISTURB

LEGEND
 DDSYL = DURABLE DOUBLE SOLID YELLOW LINE
 DSWL = DURABLE SOLID WHITE LINE
 DDWL = DURABLE DOTTED WHITE LINE
 R&S = REMOVE AND SALVAGE

MOUNTED ON SIGNAL POLE
69+15 LT

MOUNTED ON SIGNAL POLE
NEW
69+42 LT

DO NOT DISTURB
APPROXIMATE AREA OF ANEMONE MULTIFIDA FROM OCT. 20, 1986 MAP BY JENKINS & WARSHAW

SURV. 65+50

MATCH LINE

REV 66+50 LT

SPEED LIMIT 30
NEW

RUBBLE FROM FOUNDATION
MILL 2

REV 67+50 LT

EAST SOUTH
2 7
NEW

REV 67+55 LT

YOU CAN'T AFFORD IT
REMOVE

REV 69+01 RT

NO PARKING THIS SIDE OF STREET
BUS STOP
SALVAGED (2)

REV 69+01 RT

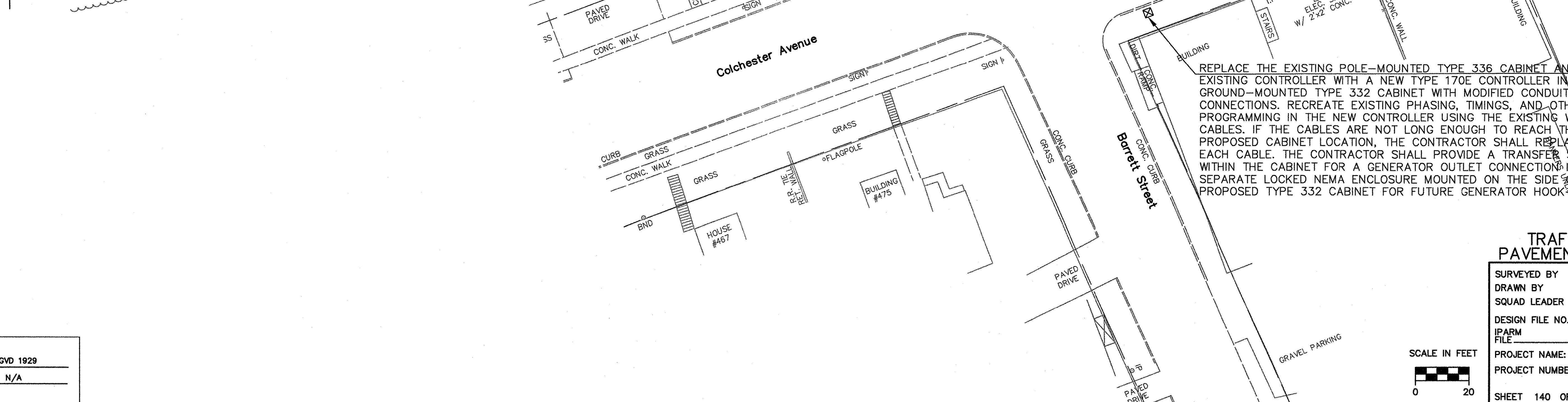
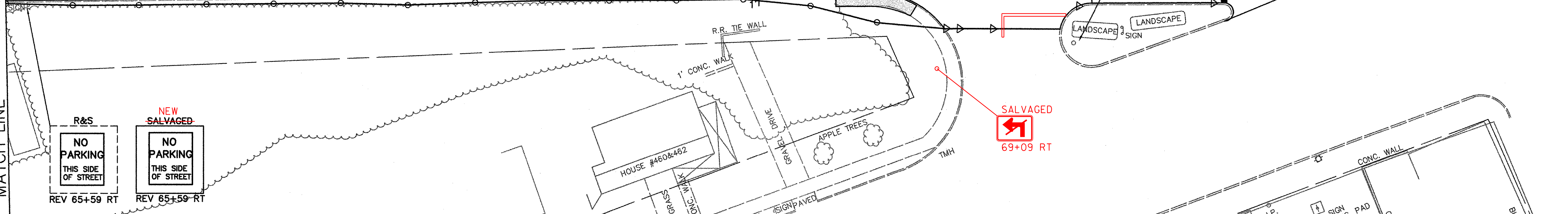
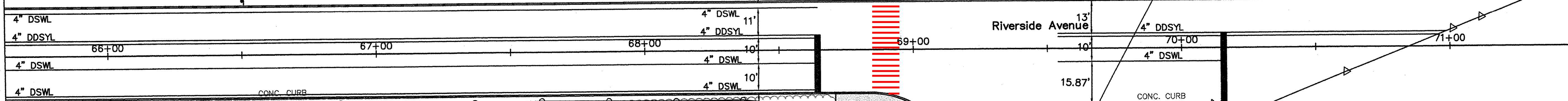
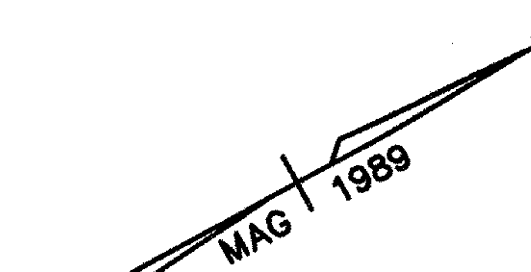
NO PARKING THIS SIDE OF STREET
BUS STOP
R&S (2)

REV 69+60 RT

7
2
RETAIN (4)

REV 70+50 LT

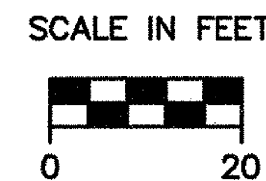
B-B
BIKE ROUTE
DOWNTOWN 2 ↑
← WINOOSKI
NEW 70+62
RIVERSIDE AVE
RETAIN



REPLACE THE EXISTING POLE-MOUNTED TYPE 336 CABINET AND EXISTING CONTROLLER WITH A NEW TYPE 170E CONTROLLER IN NEW GROUND-MOUNTED TYPE 332 CABINET WITH MODIFIED CONDUIT CONNECTIONS. RECREATE EXISTING PHASING, TIMINGS, AND OTHER PROGRAMMING IN THE NEW CONTROLLER USING THE EXISTING WIRE CABLES. IF THE CABLES ARE NOT LONG ENOUGH TO REACH THE PROPOSED CABINET LOCATION, THE CONTRACTOR SHALL REPLACE EACH CABLE. THE CONTRACTOR SHALL PROVIDE A TRANSFER SWITCH WITHIN THE CABINET FOR A GENERATOR OUTLET CONNECTION IN A SEPARATE LOCKED NEMA ENCLOSURE MOUNTED ON THE SIDE OF THE PROPOSED TYPE 332 CABINET FOR FUTURE GENERATOR HOOKUP.

TRAFFIC SIGNING & PAVEMENT MARKING PLAN

SURVEYED BY	CLD	DATE	7/89
DRAWN BY	TUS	DATE	10/93
SQUAD LEADER	JAW		
DESIGN FILE NO.	89-108		
IPARM FILE		DATE PLOTTED	
PROJECT NAME:	BURLINGTON		
PROJECT NUMBER:	MEGC 5000(15)		
SHEET 140 OF 252 SHEETS			



VIEW: CS11
DATUM
 VERTICAL NGVD 1929
 HORIZONTAL N/A