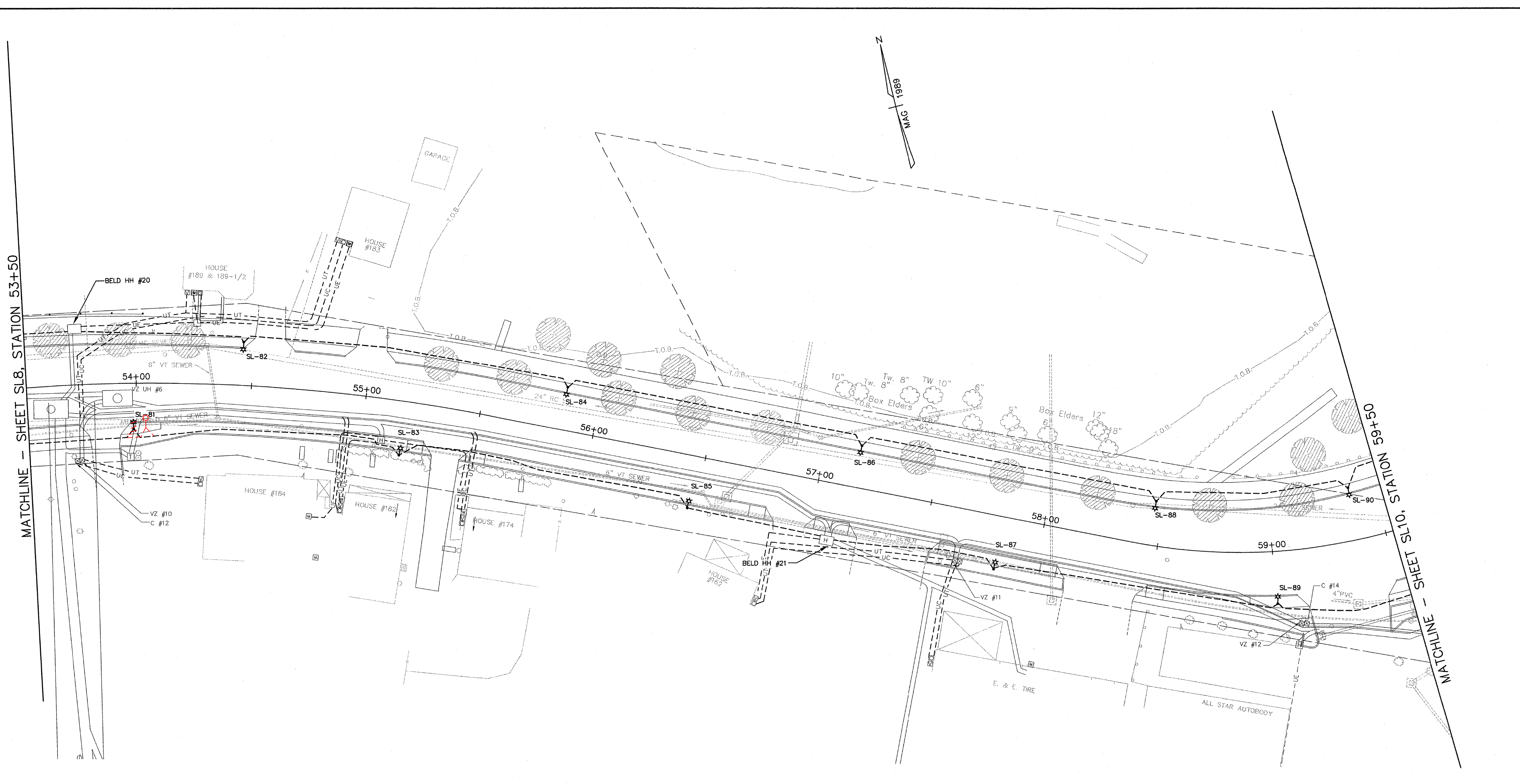
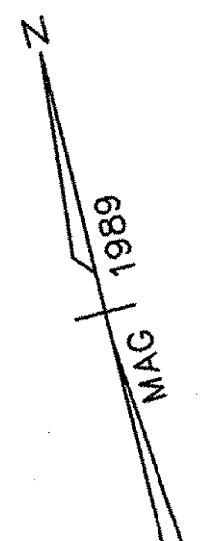


MATCHLINE - SHEET SL8, STATION 53+50



MATCHLINE - SHEET SL10, STATION 09+65

STREET LIGHTING LOCATIONS SCHEDULE							
STREET LIGHT NO.	POLE LOCATION	POLE OFFSET	LUMINAIRE TYPE	POLE TYPE	LUMINAIRE MOUNTING HEIGHT	BRACKET ARM LENGTH	REMARKS
SL- 81	<del>53+98.7</del>	19.9' R	A	A	22'	29"	
SL- 82	54+45.7'	18.8' L	A	A	22'	29"	
SL- 83	55+17.9'	23.7' R	A	A	22'	29"	
SL- 84	55+85.2'	18.8' L	A	A	22'	29"	
SL- 85	56+46.4'	23.3' R	A	A	22'	29"	
SL- 86	57+15.5'	18.8' L	A	A	22'	29"	
SL- 87	57+82.2'	23.3' R	A	A	22'	29"	
SL- 88	58+46.3'	19.6' L	A	A	22'	29"	
SL- 89	59+01.0'	22.7' R	A	A	22'	29"	
SL- 90	59+38.2'	23.3' L	A	A	22'	29"	

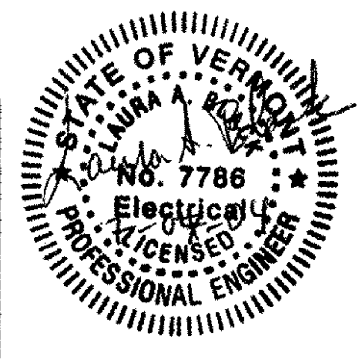
54+03

DATUM NATIONAL GEODETIC  
 VERTICAL VERTICAL DATUM 1929  
 HORIZONTAL N/A

**LEGEND**

- STREET LIGHTING AND ELECTRICAL CONDUIT
- [H] SL HH#X = STREET LIGHTING HANDHOLE
- ☼ TYPE A STREET LIGHT
- TYPE B STREET LIGHT
- BURIED CONDUIT SWEEP WITH CAP FOR FUTURE USE

SCALE IN FEET



**STREET LIGHTING LAYOUT PLANS**

**SHEET SL9**

SURVEYED BY CLD DATE 07/89  
 DRAWN BY MLC/JTM/PBH DATE 06/03  
 DESIGN BY LAB/MLC  
 DESIGN FILE NO. \_\_\_\_\_  
 PRF FILE - DATE PLOTTED - \_\_\_\_\_  
 PROJ. NAME BURLINGTON  
 PROJ. NO. MEGC 5000(15)  
 SHEET 110 OF 252 SHEETS