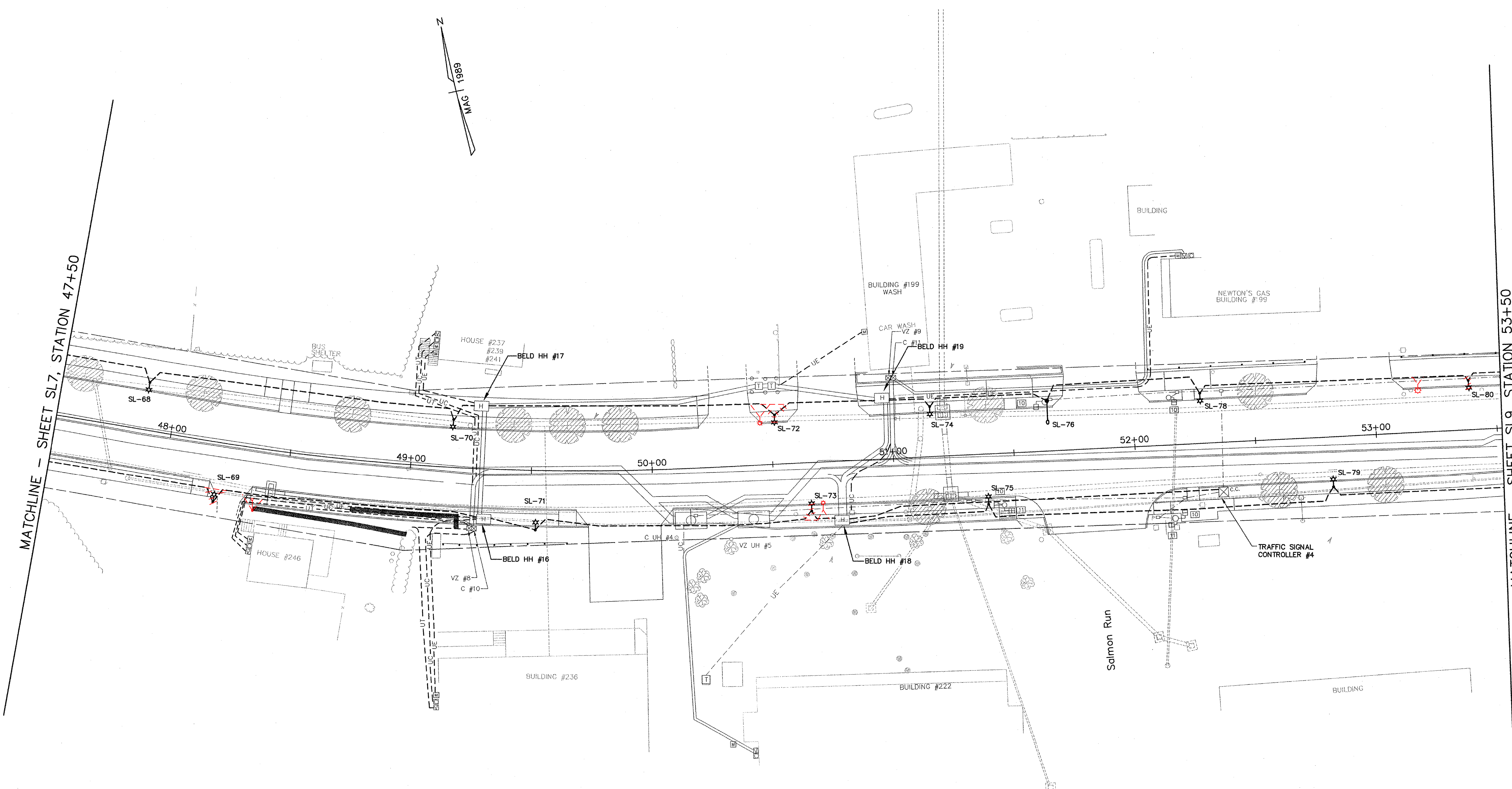


MATCHLINE - SHEET SL7, STATION 47+50

MATCHLINE - SHEET SL9, STATION 53+50



**STREET LIGHTING LOCATIONS SCHEDULE**

STREET LIGHT NO.	POLE LOCATION	POLE OFFSET	LUMINAIRE TYPE	POLE TYPE	LUMINAIRE MOUNTING HEIGHT	BRACKET ARM LENGTH	REMARKS
48+38 SL-68	47 +87.8'	19.7' L	A	A	22'	29"	
SL-69	48 +21.6'	24.8' R	A	A	22'	29"	
SL-70	49 +16.7'	19.9' L	A	A	22'	29"	
SL-71	49 +52.1'	24.7' R	A	A	22'	29"	
50+45 SL-72	50 +10.3'	31.5' L 2 1/4"	A	A	22'	29"	
50+70 SL-73	50 +65.1'	20.2' R	A	A	22'	29"	FLASHING LIGHT MOUNTED TO POLE
SL-74	51 +16.1'	20.7' L	A	A	22'	29"	
SL-75	51 +38.5'	20.9' R	A	A	22'	29"	
SL-76	51 +64.7'	20.8' L	B2	B2	30'	8'	PROVIDED BY TRAFFIC SIGNAL CONTRACTOR
SL-77	NOT USED						
SL-78	52 +28.0'	20.8' L	A	A	22'	29"	
SL-79	52 +81.3'	20.7' R	A	A	22'	29"	
53+20.7 SL-80	53 +39.1'	20.6' L	A	A	22'	29"	

**LEGEND**

- STREET LIGHTING AND ELECTRICAL CONDUIT
- SL HH#X = STREET LIGHTING HANDHOLE
- TYPE A STREET LIGHT
- TYPE B STREET LIGHT
- BURIED CONDUIT SWEEP WITH CAP FOR FUTURE USE

SCALE IN FEET

**STREET LIGHTING LAYOUT PLANS**

**SHEET SL8**

SURVEYED BY	CLD	DATE	07/89
DRAWN BY	MLC/JTM/PBH	DATE	06/03
DESIGN BY	LAB/MLC		
DESIGN FILE NO.			
PRF FILE		DATE PLOTTED	
PROJ. NAME	BURLINGTON		
PROJ. NO.	MEGC 5000(15)		
SHEET 109	OF 252	SHEETS	

DATUM NATIONAL GEODETIC  
VERTICAL VERTICAL DATUM 1929  
HORIZONTAL N/A