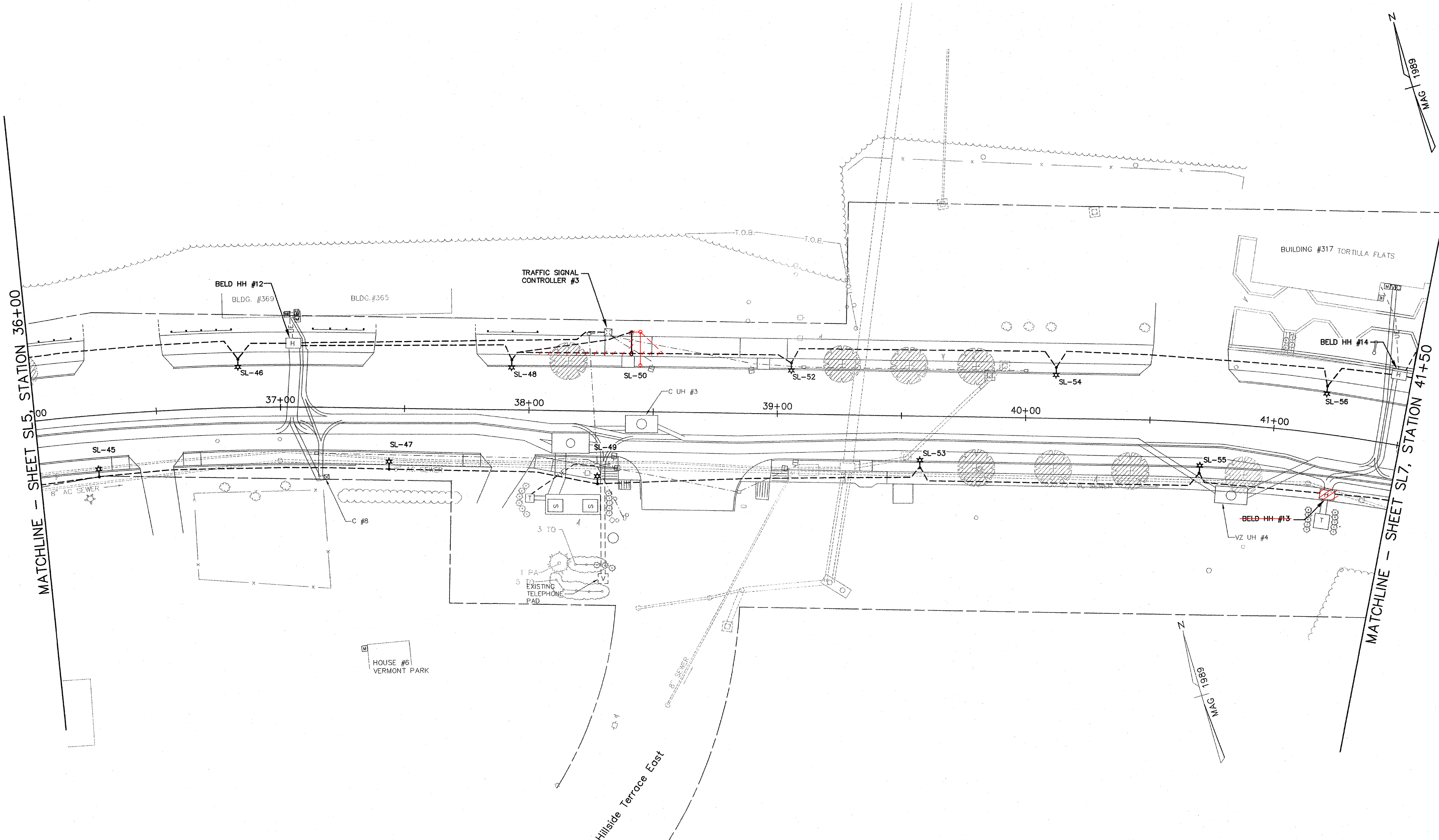


MATCHLINE - SHEET SL5, STATION 36+00

MATCHLINE - SHEET SL7, STATION 41+50



25.4' R

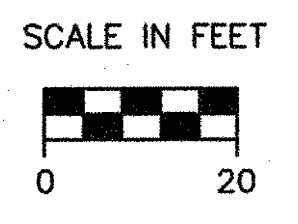
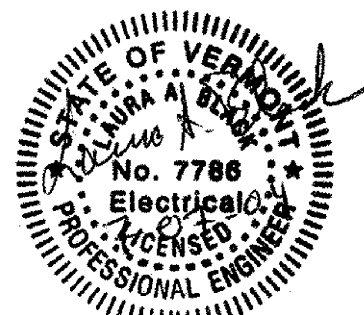
| STREET LIGHTING LOCATIONS SCHEDULE | | | | | | | |
|------------------------------------|---------------|-------------|----------------|-----------|---------------------------|--------------------|---------|
| STREET LIGHT NO. | POLE LOCATION | POLE OFFSET | LUMINAIRE TYPE | POLE TYPE | LUMINAIRE MOUNTING HEIGHT | BRACKET ARM LENGTH | REMARKS |
| SL- 45 | 36 +25.1' | 24.8' R | A | A | 22' | 29" | |
| SL- 46 | 36 +83.3' | 19.7' L | A | A | 22' | 29" | |
| SL- 47 | 37 +44.1' | 24.4' R | A | A | 22' | 29" | |
| SL- 48 | 37 +92.8' | 20.4' L | A | A | 22' | 29" | |
| SL- 49 | 38 +28.0' | 29.3' R | A | A | 22' | 29" | |
| SL- 50 | 38 +49.9' | 32.3' L | B1 | B1 | 30' | 8' 12' | |
| SL- 51 | NOT USED | | | | | | |
| SL- 52 | 39 +05.4' | 20.8' L | A | A | 22' | 29" | |
| SL- 53 | 39 +57.7' | 20.8' R | A | A | 22' | 29" | |
| SL- 54 | 40 +12.1' | 20.8' L | A | A | 22' | 29" | |
| SL- 55 | 40 +71.1' | 20.4' R | A | A | 22' | 29" | |
| SL- 56 | 41 + 19.3' | 19.4' L | A | A | 22' | 29" | |

38+44

DATUM NATIONAL GEODETIC
 VERTICAL VERTICAL DATUM 1929
 HORIZONTAL N/A

LEGEND

- STREET LIGHTING AND ELECTRICAL CONDUIT
- [H] SL HH#X = STREET LIGHTING HANDHOLE
- ☼ TYPE A STREET LIGHT
- TYPE B STREET LIGHT
- BURIED CONDUIT SWEEP WITH CAP FOR FUTURE USE



STREET LIGHTING LAYOUT PLANS

SHEET SL6

SURVEYED BY CLD DATE 07/89
 DRAWN BY MLC/JTM/PBH DATE 06/03
 DESIGN BY LAB/MLC
 DESIGN FILE NO. _____
 PRF FILE - DATE PLOTTED -
 PROJ. NAME BURLINGTON
 PROJ. NO. MEGC 5000(15)
 SHEET 107 OF 252 SHEETS