

68+91RT BARRETT ST.
 PORTLAND CEMENT CONCRETE SIDEWALK, 5"
 REV 68+70 - 69+00 RT
 91 68+96
 71+05 - 71+41 LT
 SNOW FENCE (MOD)
 REV 67+76 - 70+99 LT

PORTLAND CEMENT CONCRETE SIDEWALK 8"
 70+99 - 71+05 LT

CHANGE ELEVATION OF SEWER MANHOLE
 REV 67+89 LT
 REV 69+31 RT
 CHANGING ELEV OF DI, CB OR MH
 REV 68+94 RT
 REV 71+44 LT

ADJUST ELEVATION OF VALVE BOX
 REV 68+58 LT 68+95 RT 6'
 REV 69+09 RT 6' G 69+39 RT 5'
 G REV 69+41 RT 10' G 70+15 RT 6'

REHABING DI, CB OR MH CLASS II
 REV 68+88 RT

BRICK PAVING
 REV 68+75 - 69+75

CONSTRUCT SIDEWALK RAMP
 REV 70+83 LT
 (10' WIDE, BITUMINOUS
 CONCRETE PAVEMENT)

21A 68+88 C & LT
 NEW 15" X 30" CPEP(SL)
 NEW 4' X 4' RCDI W/C.I. GRATE TYPE D

APPROXIMATE AREA OF ANEMONE
 MULTIFIDA FROM OCT. 20, 1988
 MAP BY JENKINS & WARSHAW
 DO NOT DISTURB

DO NOT DISTURB
 APPROXIMATE AREA OF ANEMONE
 MULTIFIDA FROM OCT. 20, 1988
 MAP BY JENKINS & WARSHAW

BM #11
 V-TAT BRASS DISK
 WINOOSKI BRIDGE
 ABUTMENT
 EL.=168.76

REV. STA 71+44
 END PROJECT
 MEGC 5000(15)

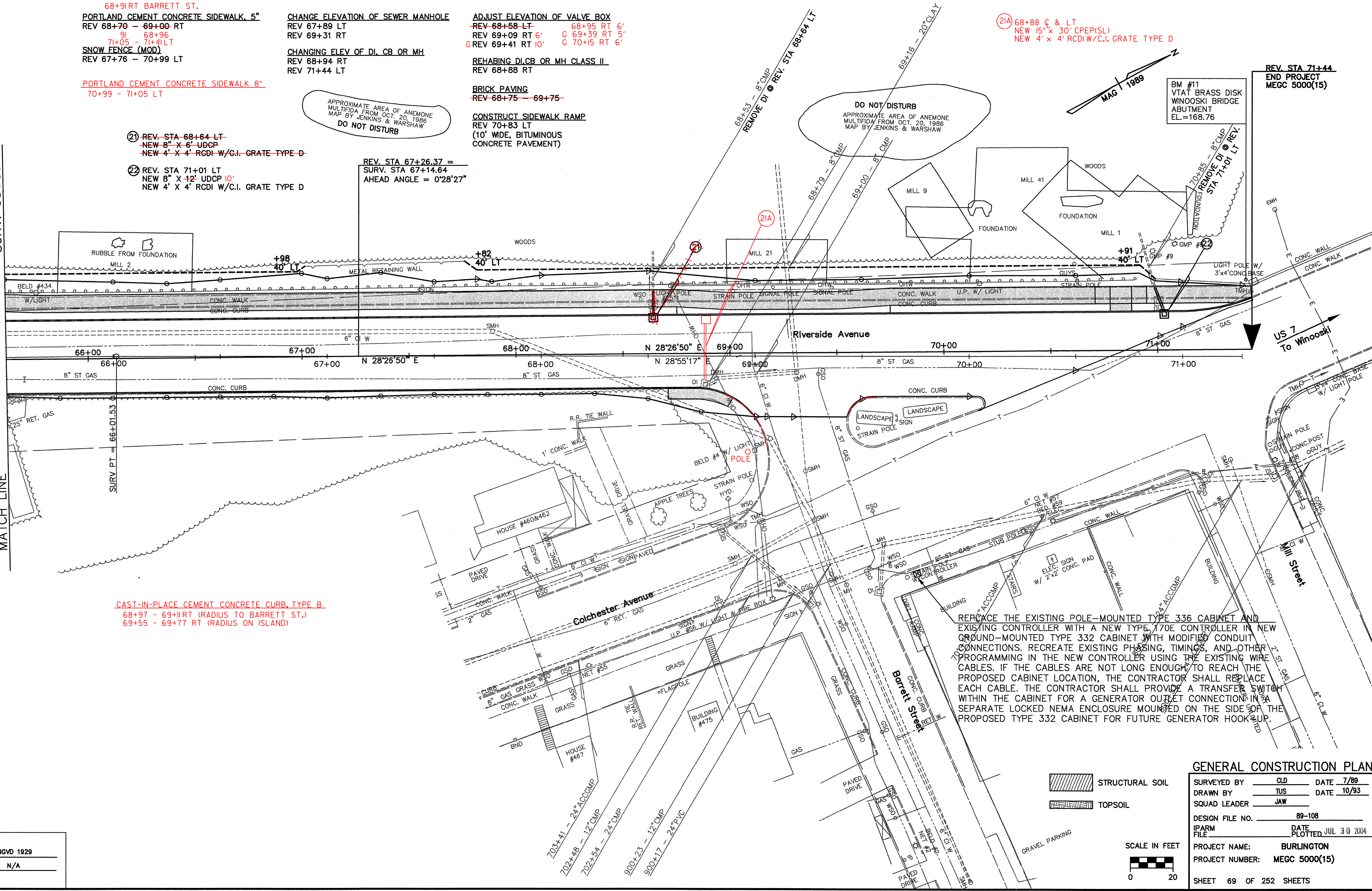
21 REV. STA 68+64 LT
 NEW 8" X 6" UDCP
 NEW 4' X 4' RCDI W/C.I. GRATE TYPE D

22 REV. STA 71+01 LT
 NEW 8" X 12" UDCP 10'
 NEW 4' X 4' RCDI W/C.I. GRATE TYPE D

REV. STA 67+26.37 =
 SURV. STA 67+14.64
 AHEAD ANGLE = 0°28'27"

SURV. 65+50

MATCH LINE



CAST-IN-PLACE CEMENT CONCRETE CURB, TYPE B
 68+97 - 69+11 RT (RADIUS TO BARRETT ST.)
 69+55 - 69+77 RT (RADIUS ON ISLAND)

REPLACE THE EXISTING POLE-MOUNTED TYPE 336 CABINET AND EXISTING CONTROLLER WITH A NEW TYPE 170E CONTROLLER IN NEW GROUND-MOUNTED TYPE 332 CABINET WITH MODIFIED CONDUIT CONNECTIONS. RECREATE EXISTING PHASING, TIMINGS, AND OTHER PROGRAMMING IN THE NEW CONTROLLER USING THE EXISTING WIRE CABLES. IF THE CABLES ARE NOT LONG ENOUGH TO REACH THE PROPOSED CABINET LOCATION, THE CONTRACTOR SHALL REPLACE EACH CABLE. THE CONTRACTOR SHALL PROVIDE A TRANSFER SWITCH WITHIN THE CABINET FOR A GENERATOR OUTLET CONNECTION IN A SEPARATE LOCKED NEMA ENCLOSURE MOUNTED ON THE SIDE OF THE PROPOSED TYPE 332 CABINET FOR FUTURE GENERATOR HOOK-UP.

GENERAL CONSTRUCTION PLAN

SURVEYED BY	CLD	DATE	7/89
DRAWN BY	TUS	DATE	10/93
SQUAD LEADER	JAW		
DESIGN FILE NO.	89-108		
IPARM FILE	DATE PLOTTED JUL 30 2004		
PROJECT NAME:	BURLINGTON		
PROJECT NUMBER:	MEGC 5000(15)		
SHEET 69 OF 252 SHEETS			

STRUCTURAL SOIL
 TOPSOIL

SCALE IN FEET
 0 20

VIEW: CSI1
 DATUM
 VERTICAL NGVD 1929
 HORIZONTAL N/A