

CAST-IN-PLACE CEMENT CONCRETE CURB, TYPE B
 74 REV 60+74 - 60+83 RT 82 EAST SIDE OF DRIVE
 78 REV 60+76 - 61+41 RT 35
 68 REV 61+69 - 69+01 RT 68+92 RT
 REV 64+12 - 64+17 LT
 REV 64+23 - 64+99 LT
 REV 64+24 - 64+30 LT
 REV 64+91 - 64+98 LT
 REV 65+11 - 65+15 LT
 REV 65+24 - 71+44 LT
REHABING DI, CB OR MH CLASS II
 REV 59+84 RT

CHANGING ELEV. OF DI, CB OR MH
 REV 59+82 RT
ADJUST ELEVATION OF VALVE BOX
 REV 59+57 RT - C 61+25 RT 32'
 REV 62+14 RT - C 62+25 RT 19'
 G REV 65+11 RT 18'
CONSTRUCT DRIVE
 REV 60+57 RT - 30' W PAVED
 REV 61+56 RT - 20' W PAVED
 REV 64+17 LT - 12' W PAVED
 REV 65+08 LT - 18' W PAVED
METAL HAND RAILING
 REV 62+00 - 63+00 LT
REMOVE AND REPLACE BRICK PAVING
 (PAVERS WHICH ARE REMOVED AND NOT
 RESET SHALL BE RETURNED TO THE WVPD)
 REV 64+04 LT
 REV 65+11 - 65+27 LT
CEMENT RUBBLE MASONRY (STONE WALL)
 (SEE SHEETS 125 & 243 FOR DETAILS)
 REV 64+26 - 64+95 LT 64+91
 REV. PI #11 64+04.84
 = 64+04.71

8" BITUMINOUS CONCRETE PED/BIKEWAY
 REV 64+30 - 64+91 LT
 REV 65+37 - 71+44 LT
PORTLAND CEMENT CONCRETE SIDEWALK, 5"
 59+49 REV 59+56 - 60+32 RT 60+38
 60+65 REV 60+82 - 61+34 RT 61+33
 REV 64+06 LT (RAMP)
 REV 64+22 LT (RAMP)
 REV 65+00 LT (RAMP)
 REV 65+22 LT (RAMP)
PORTLAND CEMENT CONCRETE SIDEWALK, 8"
 60+38 REV 60+32 - 60+82 RT 60+65
 REV 61+34 - 61+65 RT
 61+33 61+62
**CONSTRUCT SIDEWALK RAMP W/
 DETECTABLE WARNING SURFACE (YELLOW)**
 REV 64+06 LT (TYPE 1)
 REV 64+22 LT (TYPE 1)
 REV 65+00 LT (TYPE 1)
 REV 65+22 LT (TYPE 1)

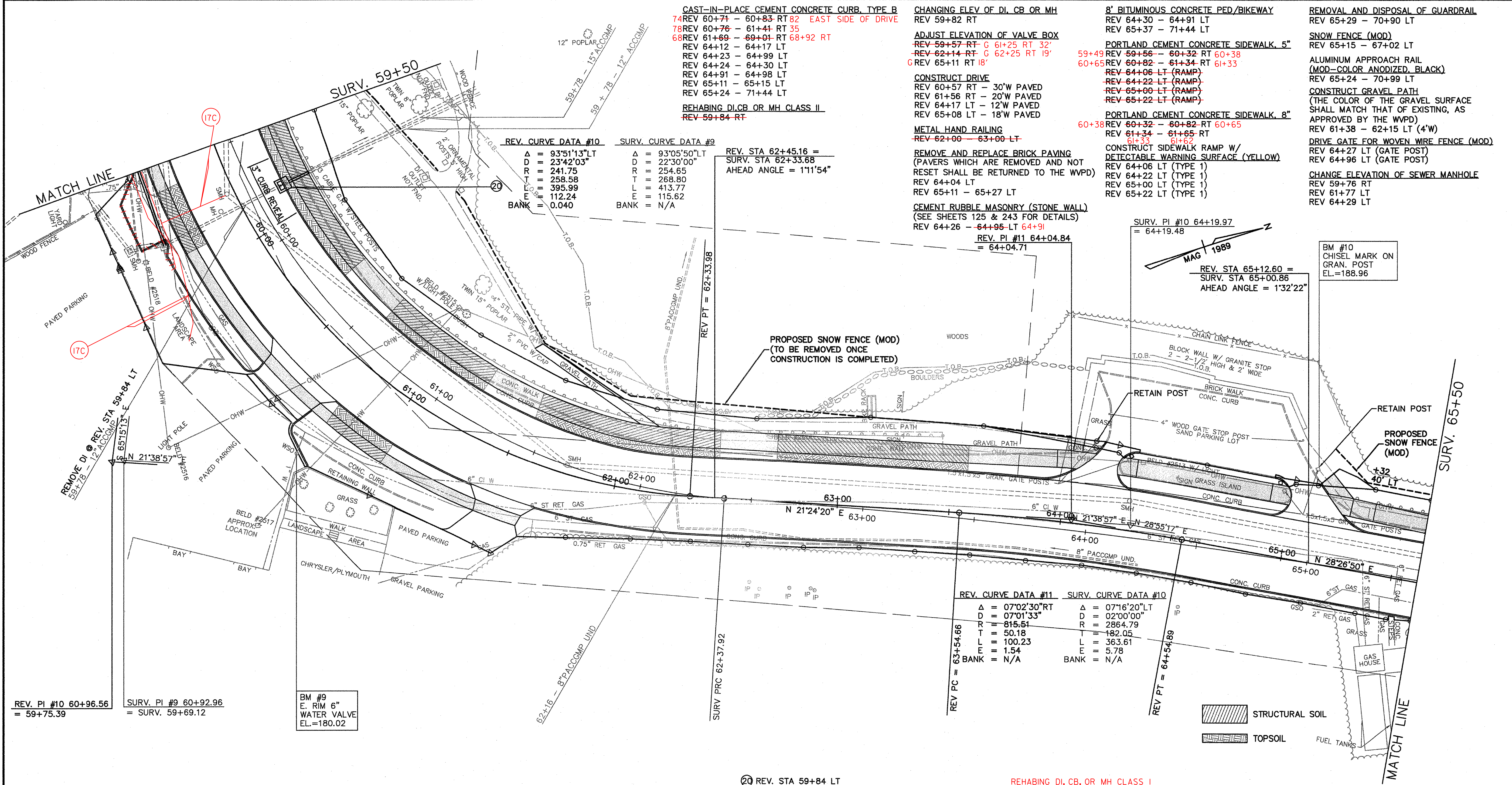
REMOVAL AND DISPOSAL OF GUARDRAIL
 REV 65+29 - 70+90 LT
SNOW FENCE (MOD)
 REV 65+15 - 67+02 LT
**ALUMINUM APPROACH RAIL
 (MOD-COLOR ANODIZED, BLACK)**
 REV 65+24 - 70+99 LT
CONSTRUCT GRAVEL PATH
 (THE COLOR OF THE GRAVEL SURFACE
 SHALL MATCH THAT OF EXISTING, AS
 APPROVED BY THE WVPD)
 DRIVE GATE FOR WOVEN WIRE FENCE (MOD)
 REV 64+27 LT (GATE POST)
 REV 64+96 LT (GATE POST)
CHANGE ELEVATION OF SEWER MANHOLE
 REV 59+76 RT
 REV 61+77 LT
 REV 64+29 LT

| REV. CURVE DATA #10 | SURV. CURVE DATA #9 |
|---------------------|---------------------|
| Δ = 93°51'13" LT | Δ = 93°05'50" LT |
| D = 23°42'03" | D = 22°30'00" |
| R = 241.75 | R = 254.65 |
| T = 258.58 | T = 268.80 |
| L = 395.99 | L = 413.77 |
| E = 112.24 | E = 115.62 |
| BANK = 0.040 | BANK = N/A |

REV. STA 62+45.16 =
 SURV. STA 62+33.68
 AHEAD ANGLE = 111°54"

SURV. PI #10 64+19.97
 = 64+19.48
 MAG 1989
 REV. STA 65+12.60 =
 SURV. STA 65+00.86
 AHEAD ANGLE = 1°32'22"

BM #10
 CHISEL MARK ON
 GRAN. POST
 EL.=188.96



| REV. CURVE DATA #11 | SURV. CURVE DATA #10 |
|---------------------|----------------------|
| Δ = 07°02'30" RT | Δ = 07°16'20" LT |
| D = 07°01'33" | D = 02°00'00" |
| R = 815.51 | R = 2864.79 |
| T = 50.18 | T = 182.05 |
| L = 100.23 | L = 363.61 |
| E = 1.54 | E = 5.78 |
| BANK = N/A | BANK = N/A |

REV. PI #10 60+96.56 = 59+75.39
 SURV. PI #9 60+92.96 = SURV. 59+69.12

BM #9
 E. RIM 6"
 WATER VALVE
 EL.=180.02

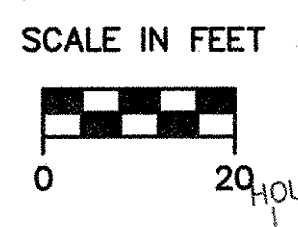
20 REV. STA 59+84 LT
 NEW 15' X 10' CSP
 NEW 6' X 6' RCCB W/2 C.I. GRATE TYPE D

REHABING DI, CB, OR MH CLASS I
 59+75 RT
 59+80 RT
 59+80 RT
 61+77 LT
 64+29 LT

STRUCTURAL SOIL
 TOPSOIL

GENERAL CONSTRUCTION PLAN

| | | | |
|------------------------|---------------|------|-------|
| SURVEYED BY | CLD | DATE | 7/89 |
| DRAWN BY | TUS | DATE | 10/93 |
| SQUAD LEADER | JAW | | |
| DESIGN FILE NO. | 89-108 | | |
| IPARM FILE | DATE PLOTTED | | |
| PROJECT NAME: | BURLINGTON | | |
| PROJECT NUMBER: | MEGC 5000(15) | | |
| SHEET 67 OF 252 SHEETS | | | |



VIEW CS10
DATUM
 VERTICAL NGVD 1929
 HORIZONTAL N/A