

(18A) 58+14 RT
 NEW 15" X 14" CPEP(SL)
 NEW 4' X 4' RCDD W/C.I. GRATE TYPE D

SURV. CURVE DATA #9
 Δ = 93°05'50"LT
 D = 22°30'00"
 R = 254.65
 T = 268.80
 L = 413.77
 E = 115.62
 BANK = N/A

REV. CURVE DATA #10
 Δ = 93°51'13"LT
 D = 23°42'03"
 R = 241.75
 T = 258.58
 L = 395.99
 E = 112.24
 BANK = 0.040

(17A) 55+02 - 55+37 RT
 NEW 8" X 34' UNDERDRAIN CARRIER PIPE

(17B) 55+37 RT
 NEW 8" X 96' UNDERDRAIN CARRIER PIPE

REHABING DI, CB, OR MH CLASS 1
 54+30 LT
 56+52 RT
 58+36 LT

(17C) 58+75 - 60+18 RT & 59+72 RT
 NEW 6" X 202' PVC SEWER PIPE

REV. STA 53+74.77 =
 SURV. STA 53+72.66
 AHEAD ANGLE = 0°51'03"

REV. STA 55+40.32 =
 SURV. STA 55+38.13
 AHEAD ANGLE = 0°51'03"

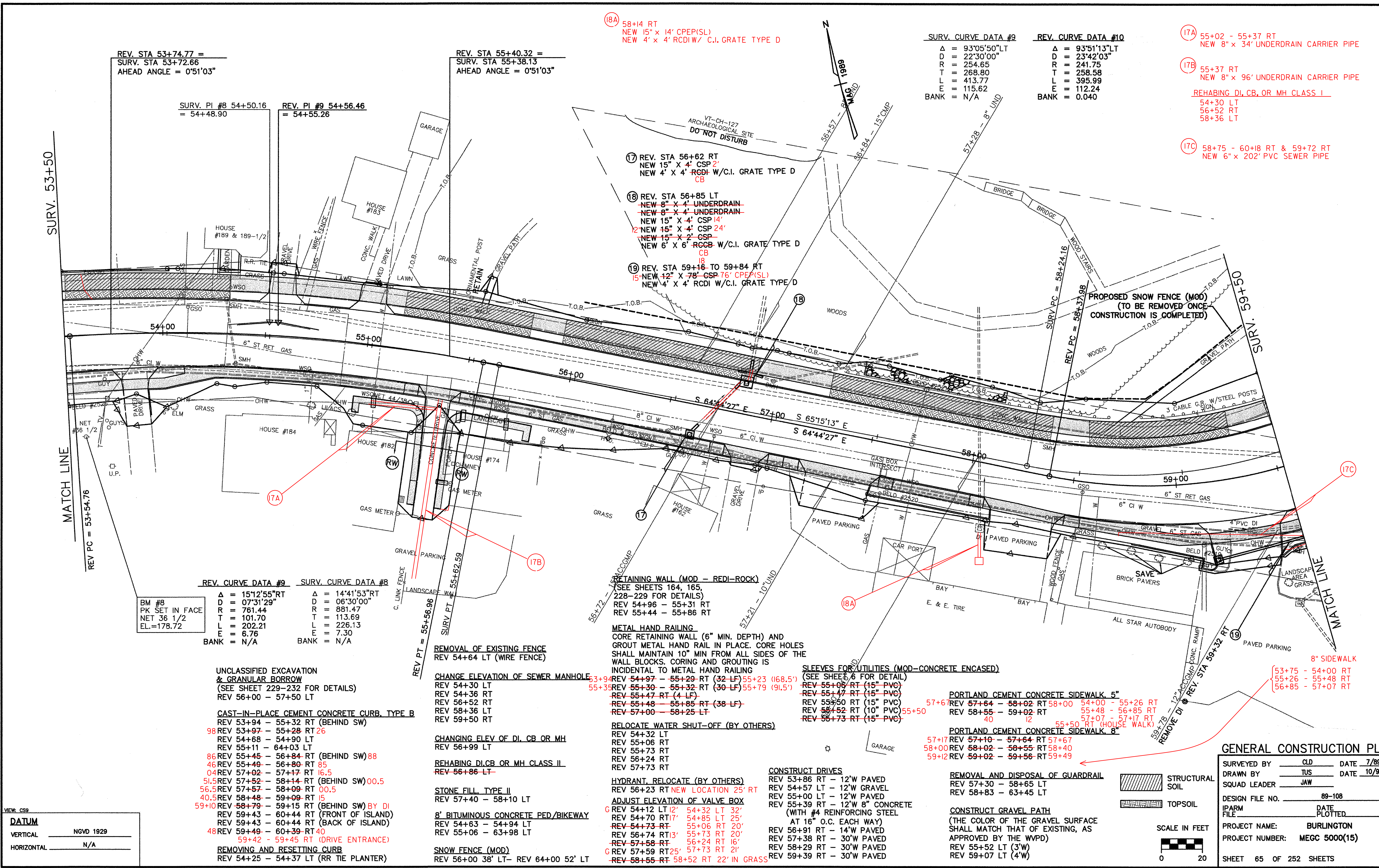
SURV. PI #8 54+50.16
 = 54+48.90

REV. PI #9 54+56.46
 = 54+55.26

(17) REV. STA 56+62 RT
 NEW 15" X 4" CSP 2'
 NEW 4' X 4' RCDD W/C.I. GRATE TYPE D
 CB

(18) REV. STA 56+85 LT
 NEW 8" X 4" UNDERDRAIN
 NEW 8" X 4" UNDERDRAIN
 NEW 15" X 4" CSP 14'
 NEW 15" X 4" CSP 24'
 NEW 15" X 2" CSP
 NEW 6" X 6" RCCB W/C.I. GRATE TYPE D
 CB

(19) REV. STA 59+16 TO 59+84 RT
 NEW 12" X 78' CSP 76' CPEP(SL)
 NEW 4' X 4' RCDD W/C.I. GRATE TYPE D



SURV. 53+50

SURV. 59+50

BM #8
 PK SET IN FACE
 NET 36 1/2
 EL.=178.72

REV. CURVE DATA #9	SURV. CURVE DATA #8
Δ = 15°12'55"RT	Δ = 14°41'53"RT
D = 07°31'29"	D = 06°30'00"
R = 761.44	R = 881.47
T = 101.70	T = 113.69
L = 202.21	L = 226.13
E = 6.76	E = 7.30
BANK = N/A	BANK = N/A

- UNCLASSIFIED EXCAVATION & GRANULAR BORROW (SEE SHEET 229-232 FOR DETAILS)
 REV 56+00 - 57+50 LT
- CAST-IN-PLACE CEMENT CONCRETE CURB, TYPE B
 REV 53+94 - 55+32 RT (BEHIND SW)
 98 REV 53+97 - 55+28 RT 26
 REV 54+68 - 54+90 LT
 REV 55+11 - 64+03 LT
 86 REV 55+45 - 56+84 RT (BEHIND SW) 88
 46 REV 55+49 - 56+80 RT 85
 04 REV 57+02 - 57+17 RT 6.5
 51.5 REV 57+52 - 58+44 RT (BEHIND SW) 00.5
 56.5 REV 57+57 - 58+09 RT 00.5
 40.5 REV 58+48 - 59+09 RT 15
 59+10 REV 58+79 - 59+15 RT (BEHIND SW) BY DI
 REV 59+43 - 60+44 RT (FRONT OF ISLAND)
 REV 59+43 - 60+44 RT (BACK OF ISLAND)
 48 REV 59+49 - 60+39 RT 40
 59+42 - 59+45 RT (DRIVE ENTRANCE)
- REMOVING AND RESETING CURB
 REV 54+25 - 54+37 LT (RR TIE PLANTER)
- REMOVAL OF EXISTING FENCE
 REV 54+64 LT (WIRE FENCE)
- CHANGE ELEVATION OF SEWER MANHOLE
 REV 54+30 LT
 REV 54+36 RT
 REV 56+52 RT
 REV 58+36 LT
 REV 59+50 RT
- CHANGING ELEV OF DI, CB OR MH
 REV 56+99 LT
- REHABING DI, CB OR MH CLASS II
 REV 56+86 LT
- STONE FILL, TYPE II
 REV 57+40 - 58+10 LT
- 8' BITUMINOUS CONCRETE PED/BIKEWAY
 REV 54+63 - 54+94 LT
 REV 55+06 - 63+98 LT
- SNOW FENCE (MOD)
 REV 56+00 38' LT- REV 64+00 52' LT

- RETAINING WALL (MOD - REDI-ROCK)
 (SEE SHEETS 164, 165, 228-229 FOR DETAILS)
 REV 54+96 - 55+31 RT
 REV 55+44 - 55+86 RT
- METAL HAND RAILING
 CORE RETAINING WALL (6" MIN. DEPTH) AND GROUT METAL HAND RAIL IN PLACE. CORE HOLES SHALL MAINTAIN 10" MIN FROM ALL SIDES OF THE WALL BLOCKS. CORING AND GROUTING IS INCIDENTAL TO METAL HAND RAILING
- RELOCATE WATER SHUT-OFF (BY OTHERS)
 REV 54+32 LT
 REV 55+06 RT
 REV 55+73 RT
 REV 56+24 RT
 REV 57+73 RT
- HYDRANT, RELOCATE (BY OTHERS)
 REV 56+23 RT NEW LOCATION 25' RT
- ADJUST ELEVATION OF VALVE BOX
 REV 54+12 LT 12' 54+32 LT 32'
 REV 54+70 RT 17' 54+85 LT 25'
 REV 54+73 RT 55+06 RT 20'
 REV 56+74 RT 13' 55+73 RT 20'
 REV 57+58 RT 56+24 RT 16'
 REV 57+59 RT 57+73 RT 21'
 REV 58+55 RT 58+52 RT 22' IN GRASS

- SLEEVES FOR UTILITIES (MOD-CONCRETE ENCASED) (SEE SHEET 6 FOR DETAIL)
 REV 55+06 RT (15" PVC)
 REV 55+47 RT (15" PVC)
 REV 55+50 RT (15" PVC)
 REV 55+52 RT (10" PVC)
 REV 56+73 RT (15" PVC)
- PORTLAND CEMENT CONCRETE SIDEWALK, 5"
 57+6 REV 57+64 - 58+02 RT 58+00 54+00 - 55+26 RT
 REV 58+55 - 59+02 RT 55+48 - 56+85 RT
 40 12 55+07 - 57+17 RT
 55+50 RT (HOUSE WALK)
- PORTLAND CEMENT CONCRETE SIDEWALK, 8"
 57+17 REV 57+10 - 57+64 RT 57+67
 58+00 REV 58+02 - 58+55 RT 58+40
 59+12 REV 59+02 - 59+56 RT 59+49
- REMOVAL AND DISPOSAL OF GUARDRAIL
 REV 57+30 - 58+65 LT
 REV 58+83 - 63+45 LT
- CONSTRUCT DRIVE
 REV 53+86 RT - 12' W PAVED
 REV 54+57 LT - 12' W GRAVEL
 REV 55+00 LT - 12' W PAVED
 REV 55+39 RT - 12' W 8" CONCRETE (WITH #4 REINFORCING STEEL AT 16" O.C. EACH WAY)
 REV 56+91 RT - 14' W PAVED
 REV 57+38 RT - 30' W PAVED
 REV 58+29 RT - 30' W PAVED
 REV 59+39 RT - 30' W PAVED
- CONSTRUCT GRAVEL PATH (THE COLOR OF THE GRAVEL SURFACE SHALL MATCH THAT OF EXISTING, AS APPROVED BY THE WVPD)
 REV 55+52 LT (3' W)
 REV 59+07 LT (4' W)

- PROPOSED SNOW FENCE (MOD) (TO BE REMOVED ONCE CONSTRUCTION IS COMPLETED)
- 8" SIDEWALK
 53+75 - 54+00 RT
 55+26 - 55+48 RT
 56+85 - 57+07 RT

VIEW: CSP
DATUM
 VERTICAL NGVD 1929
 HORIZONTAL N/A

GENERAL CONSTRUCTION PLAN

SURVEYED BY CLD DATE 7/89
 DRAWN BY TUS DATE 10/93
 SQUAD LEADER JAW
 DESIGN FILE NO. 89-108
 IPARM FILE DATE PLOTTED
 PROJECT NAME: BURLINGTON
 PROJECT NUMBER: MEGC 5000(15)
 SHEET 65 OF 252 SHEETS

