

CAST-IN-PLACE CEMENT CONCRETE CURB, TYPE B
51+20 - 51+48.5 LT

14 REV. STA 48+44 RT
NEW 15" X 4' CSP
~~NEW 15" X 4' CSP~~
NEW 4' X 6' RCDI W/C.I. GRATE TYPE D

16 REV. STA 51+23 RT
NEW 12" X 4' RCP CLASS III
~~NEW 24" X 4' CSP~~
~~NEW 24" X 4' CPEP (SL)~~
~~NEW 18" X 4' CSP~~
~~NEW 18" X 4' RCP CLASS III~~
NEW 6' X 6' RCCB W/2 C.I. GRATE TYPE D

14B 49+07 - 49+48 LT
NEW 8" X 40' 8" UNDERDRAIN CARRIER PIPE

REV. CURVE DATA #8
Δ = 12°31'08" LT
D = 06°00'00"
R = 954.93
T = 104.74
L = 208.65
E = 5.73
BANK = N/A

SURV. CURVE DATA #7
Δ = 26°45'37" LT
D = 04°24'27"
R = 1300.00
T = 309.23
L = 607.17
E = 36.27
BANK = N/A

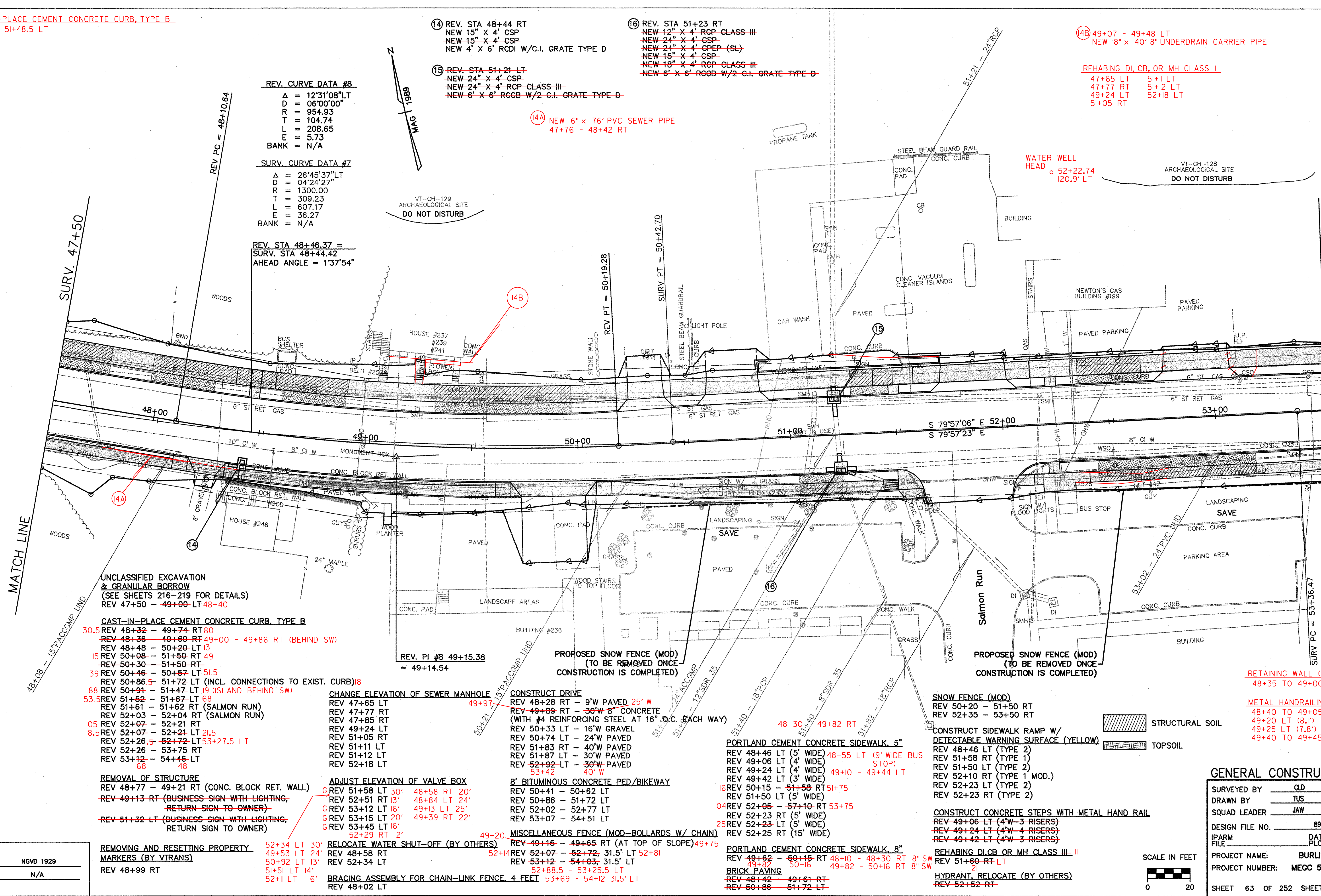
REV. STA 48+46.37 =
SURV. STA 48+44.42
AHEAD ANGLE = 1°37'54"

14A NEW 6" X 76' PVC SEWER PIPE
47+76 - 48+42 RT

WATER WELL HEAD
52+22.74
120.9' LT

REHABING DI, CB, OR MH CLASS I

47+65 LT 51+11 LT
47+77 RT 51+12 LT
49+24 LT 52+18 LT
51+05 RT



UNCLASSIFIED EXCAVATION & GRANULAR BORROW
(SEE SHEETS 216-219 FOR DETAILS)
REV 47+50 - 49+00 LT 48+40

CAST-IN-PLACE CEMENT CONCRETE CURB, TYPE B
30.5 REV 48+32 - 49+74 RT 80
REV 48+36 - 49+69 RT 49+00 - 49+86 RT (BEHIND SW)
REV 48+48 - 50+20 LT 13
15 REV 50+08 - 51+69 RT 49
REV 50+30 - 51+50 RT
39 REV 50+46 - 50+57 LT 51.5
REV 50+86.5 - 51+72 LT (INCL. CONNECTIONS TO EXIST. CURB)
88 REV 50+91 - 51+47 LT 19 (ISLAND BEHIND SW)
53.5 REV 51+52 - 51+67 LT 68
REV 51+61 - 51+62 RT (SALMON RUN)
REV 52+03 - 52+04 RT (SALMON RUN)
05 REV 52+07 - 52+21 RT
8.5 REV 52+07 - 52+21 LT 21.5
REV 52+26.5 - 52+72 LT 53+27.5 LT
REV 52+26 - 53+75 RT
REV 53+12 - 54+46 LT
68 48

REMOVAL OF STRUCTURE
REV 48+77 - 49+21 RT (CONC. BLOCK RET. WALL)
REV 49+13 RT (BUSINESS SIGN WITH LIGHTING, RETURN SIGN TO OWNER)
REV 51+32 LT (BUSINESS SIGN WITH LIGHTING, RETURN SIGN TO OWNER)

REMOVING AND RESETTING PROPERTY MARKERS (BY VITRANS)
REV 48+99 RT

CHANGE ELEVATION OF SEWER MANHOLE
REV 47+65 LT
REV 47+77 RT
REV 47+85 RT
REV 49+24 LT
REV 51+05 RT
REV 51+11 LT
REV 51+12 LT
REV 52+18 LT

ADJUST ELEVATION OF VALVE BOX
G REV 51+58 LT 30' 48+58 RT 20'
REV 52+51 RT 13' 48+84 LT 24'
G REV 53+12 LT 16' 49+13 LT 25'
G REV 53+15 LT 20' 49+39 RT 22'
G REV 53+45 LT 16' 52+29 RT 12'

RELOCATE WATER SHUT-OFF (BY OTHERS)
REV 48+58 RT
REV 52+34 LT
52+34 LT
51+51 LT 14'
52+11 LT 16'

CONSTRUCT DRIVE
REV 48+28 RT - 9'W PAVED 25' W
REV 49+89 RT - 30'W 8" CONCRETE (WITH #4 REINFORCING STEEL AT 16" O.C. EACH WAY)
REV 50+33 LT - 16'W GRAVEL
REV 50+74 LT - 24'W PAVED
REV 51+83 RT - 40'W PAVED
REV 51+87 LT - 30'W PAVED
REV 52+92 LT - 30'W PAVED
53+42 40' W

8' BITUMINOUS CONCRETE PED/BIKEWAY
REV 50+41 - 50+62 LT
REV 50+86 - 51+72 LT
REV 52+02 - 52+77 LT
REV 53+07 - 54+51 LT

MISCELLANEOUS FENCE (MOD-BOLLARDS W/ CHAIN)
REV 49+15 - 49+65 RT (AT TOP OF SLOPE) 49+75
REV 49+15 - 49+65 RT (AT TOP OF SLOPE) 49+75
REV 52+07 - 52+72, 31.5' LT 52+81
REV 53+12 - 54+03, 31.5' LT
52+88.5 - 53+25.5 LT
53+69 - 54+12 31.5' LT

PORTLAND CEMENT CONCRETE SIDEWALK, 5"
REV 48+46 LT (5' WIDE)
REV 49+06 LT (4' WIDE)
REV 49+24 LT (4' WIDE)
REV 49+42 LT (3' WIDE)
REV 50+15 - 51+58 RT 51+75
REV 51+50 LT (5' WIDE)
04 REV 52+05 - 57+10 RT 53+75
REV 52+23 RT (5' WIDE)
REV 52+23 LT (5' WIDE)
REV 52+25 RT (15' WIDE)

PORTLAND CEMENT CONCRETE SIDEWALK, 8"
REV 49+62 - 50+15 RT 48+10 - 48+30 RT 8' SW
49+82 50+16 49+82 - 50+16 RT 8' SW
BRICK PAVING
REV 48+42 - 49+61 RT
REV 50+86 - 51+72 LT

SNOW FENCE (MOD)
REV 50+20 - 51+50 RT
REV 52+35 - 53+50 RT

CONSTRUCT SIDEWALK RAMP W/ DETECTABLE WARNING SURFACE (YELLOW)
REV 48+46 LT (TYPE 2)
REV 51+58 RT (TYPE 1)
REV 51+50 LT (TYPE 2)
REV 52+10 RT (TYPE 1 MOD.)
REV 52+23 LT (TYPE 2)
REV 52+23 RT (TYPE 2)

CONSTRUCT CONCRETE STEPS WITH METAL HAND RAIL
REV 49+06 LT (4'W-3 RISERS)
REV 49+24 LT (4'W-4 RISERS)
REV 49+42 LT (4'W-3 RISERS)

REHABING DI, CB, OR MH CLASS III - II
REV 51+60 RT LT
21
HYDRANT, RELOCATE (BY OTHERS)
REV 52+52 RT

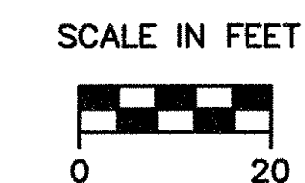
RETAINING WALL (MID-REDI-ROCK)
48+35 TO 49+00 RT

METAL HANDRAILING
48+40 TO 49+05 RT (65')
49+20 LT (8.1')
49+25 LT (7.8')
49+40 TO 49+45 LT (9.1')

STRUCTURAL SOIL
TOPSOIL

GENERAL CONSTRUCTION PLAN

| | | | |
|-----------------|---------------|---------------|-------|
| SURVEYED BY | CLD | DATE | 7/89 |
| DRAWN BY | TUS | DATE | 10/93 |
| SQUAD LEADER | JAW | | |
| DESIGN FILE NO. | 89-108 | | |
| IPARM FILE | | DATE PLOTTED | |
| PROJECT NAME: | BURLINGTON | | |
| PROJECT NUMBER: | MEGC 5000(15) | | |
| SHEET | 63 | OF 252 SHEETS | |



DATUM
VERTICAL NGVD 1929
HORIZONTAL N/A

VIEW: CSB