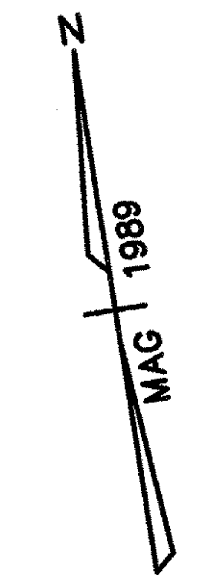
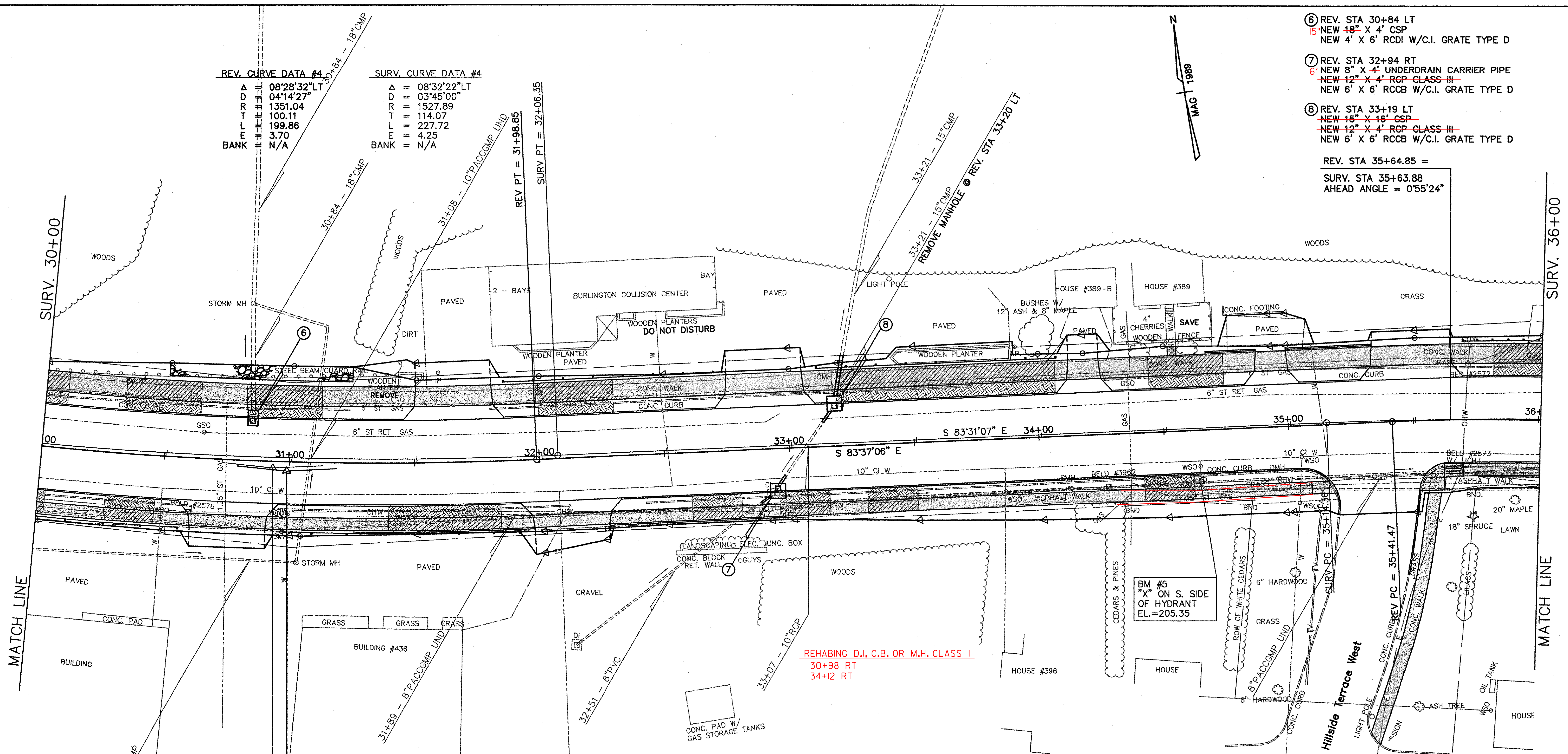


- ⑥ REV. STA 30+84 LT
NEW 18" X 4' CSP
NEW 4' X 6' RCDI W/C.I. GRATE TYPE D
- ⑦ REV. STA 32+94 RT
NEW 8" X 4' UNDERDRAIN CARRIER PIPE
NEW 12" X 4' RCP CLASS III
NEW 6' X 6' RCCB W/C.I. GRATE TYPE D
- ⑧ REV. STA 33+19 LT
NEW 15" X 16" CSP
NEW 12" X 4' RCP CLASS III
NEW 6' X 6' RCCB W/C.I. GRATE TYPE D

REV. STA 35+64.85 =
SURV. STA 35+63.88
AHEAD ANGLE = 0°55'24"



REV. CURVE DATA #4		SURV. CURVE DATA #4	
Δ	08°28'32" LT	Δ	08°32'22" LT
D	04°14'27"	D	03°45'00"
R	1351.04	R	1527.89
T	100.11	T	114.07
M	199.86	M	227.72
BANK	3.70	BANK	4.25
	N/A		N/A



MATCH LINE

MATCH LINE

REV. PI #4 30+99.10
= 30+98.74

SURV. PI #4 30+92.70
= 30+92.28

BRICK PAVING
REV 34+68 - 34+88 LT
REV 35+00 - 35+35 LT

CHANGE ELEVATION OF SEWER MANHOLE
REV 30+98 RT
REV 34+12 RT

CAST-IN-PLACE CEMENT CONCRETE CURB, TYPE B
REV 30+96 RT 31+92 RT 65
REV 31+26 - 31+97 RT (BEHIND SW)
88 REV 31+86 - 32+71 LT
REV 32+27 - 33+01 RT (BEHIND SW)
REV 32+32 - 35+16 RT 16.5
REV 33+11.5 - 34+08 LT 09
REV 34+30.5 - 34+83 LT
REV 34+68 - 34+88 LT
REV 35+00 - 35+35 LT
REV 35+05 - 35+30 LT 29.5
REV 35+18 - 35+19 RT (HILLSIDE TERRACE WEST)
REV 35+47 - 35+52 RT (HILLSIDE TERRACE WEST)
UTILITY PLACEMENT)

REMOVAL OF EXISTING CURB
REV 31+43 - 31+54 LT (WOOD PLANTER)
REV 33+43 - 33+91 LT (WOOD PLANTER)

CHANGING ELEV OF DI, CB OR MH
REV 34+95 RT

CONSTRUCT DRIVES
REV 30+76 RT - 30'W PAVED
REV 31+66 LT - 30'W PAVED
REV 32+92 LT - 30'W PAVED
REV 34+18 LT - 12'W PAVED
REV 34+94 LT - 12'W PAVED
REV 35+50 LT - 30'W PAVED

8' BITUMINOUS CONCRETE PED/BIKEWAY
REV 31+82 - 32+76 LT
REV 33+06 - 34+13 LT
REV 34+25 - 34+88 LT
REV 35+00 - 35+35 LT
REV 35+65 - 36+23 LT

STONE FILL, TYPE II
REV 30+50 - 31+25 LT

ADJUST ELEVATION OF VALVE BOX
REV 30+65 LT 30+50 RT 24'
REV 31+00 RT 32+50 LT 23'
REV 33+06 LT 22' 35+01 RT 22'
REV 33+86 RT 30+74 LT 24'
REV 34+64 RT 14' G32+00 LT 29'
REV 35+03 RT 13' G33+45 LT 23'
REV 35+05 RT G33+85 RT 19'
REV 35+98 LT G34+37 LT 23'
G34+40 RT 19'
G34+41 LT 26'

RELOCATE WATER SHUT-OFF (BY OTHERS)
REV 30+50 RT

RELOCATE GAS SHUT-OFF (BY OTHERS)
REV 32+00 LT
REV 34+37 LT

HYDRANT, RELOCATE (BY OTHERS)
REV 34+64 RT

32+20 - 32+70 28.5' RT
31+00 - 31+61 28.5' RT
MISCELLANEOUS FENCE (MOD-BOLLARDS W/ CHAIN)
REV 30+96 - 31+02, 28.5' RT
31+97 REV 31+86 - 32+71, 31.5' LT 32+57
33+35 REV 33+12 - 34+08, 31.5' LT 33+91
REV 35+70 - 36+18, 31.5' LT

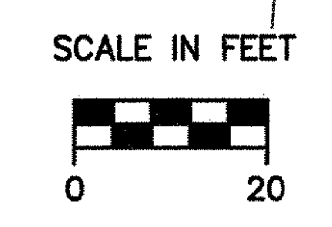
PORTLAND CEMENT CONCRETE SIDEWALK, 8"
REV 31+03 - 31+85 RT 31+63
REV 32+39 - 35+18 RT 32+10
REV 34+55 LT (4' WIDE)
REV 35+30 - 35+59 RT (HILLSIDE TERRACE WEST)
UTILITY PLACEMENT)
REV 35+52 - 38+45 RT

PORTLAND CEMENT CONCRETE SIDEWALK, 8"
REV 30+49 - 31+03 RT 30+47 - 31+00
REV 31+85 - 32+39 RT
31+63 - 32+10
CONSTRUCT SIDEWALK RAMP W/ DETECTABLE WARNING SURFACE (YELLOW)
REV 35+15 RT (TYPE 1)
REV 35+55 RT (TYPE 6 MOD.)

REMOVING AND RESETTING FENCE
REV 34+31 - 34+40 LT (UTILITY PLACEMENT)
REMOVING AND RESETTING CURBING (WOOD CURB)
REV 32+34 - 32+41 LT (UTILITY PLACEMENT)

GENERAL CONSTRUCTION PLAN

SURVEYED BY	CLD	DATE	7/89
DRAWN BY	TUS	DATE	10/93
SQUAD LEADER	JAW		
DESIGN FILE NO.	89-108		
IPARM FILE	DATE PLOTTED JUL 30 2004		
PROJECT NAME:	BURLINGTON		
PROJECT NUMBER:	MEGC 5000(15)		
SHEET	57 OF 252 SHEETS		



VIEW: CSS

DATUM	NGVD 1929
VERTICAL	N/A
HORIZONTAL	N/A