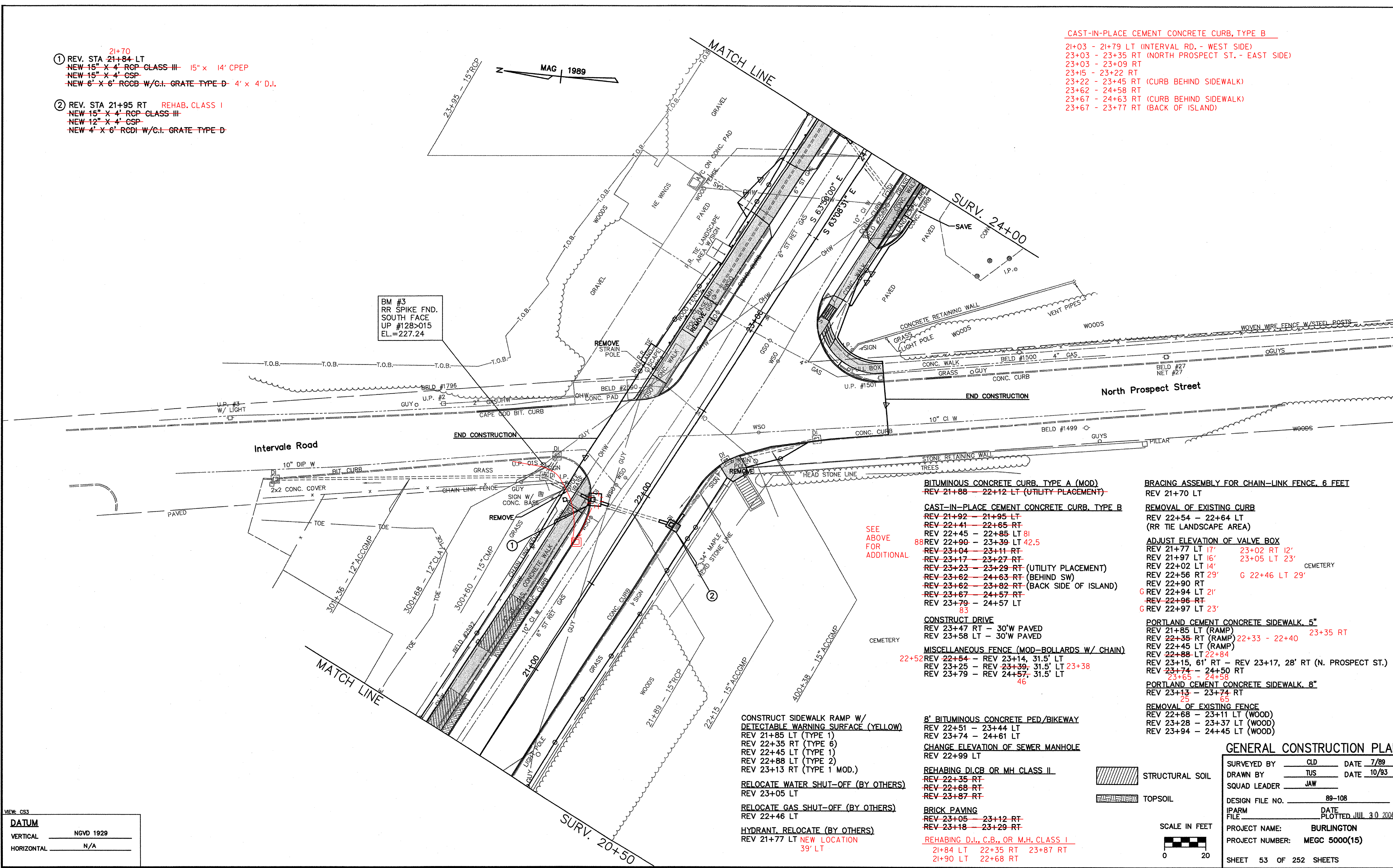


- ① REV. STA 21+70
 NEW 15" X 4" RCP CLASS III 15" X 14" CPEP
 NEW 15" X 4" CSP
 NEW 6' X 6' RCCB W/C.I. GRATE TYPE D 4' X 4' D.I.
- ② REV. STA 21+95 RT REHAB. CLASS I
 NEW 15" X 4" RCP CLASS III
 NEW 12" X 4" CSP
 NEW 4' X 6' RCCB W/C.I. GRATE TYPE D

- CAST-IN-PLACE CEMENT CONCRETE CURB, TYPE B
- 21+03 - 21+79 LT (INTERVAL RD. - WEST SIDE)
 - 23+03 - 23+35 RT (NORTH PROSPECT ST. - EAST SIDE)
 - 23+03 - 23+09 RT
 - 23+15 - 23+22 RT
 - 23+22 - 23+45 RT (CURB BEHIND SIDEWALK)
 - 23+62 - 24+58 RT
 - 23+67 - 24+63 RT (CURB BEHIND SIDEWALK)
 - 23+67 - 23+77 RT (BACK OF ISLAND)



BM #3
 RR SPIKE FND.
 SOUTH FACE
 UP #128-015
 EL.=227.24

SEE
 ABOVE
 FOR
 ADDITIONAL

- BITUMINOUS CONCRETE CURB, TYPE A (MOD)
- ~~REV 21+88 - 22+12 LT (UTILITY PLACEMENT)~~
- CAST-IN-PLACE CEMENT CONCRETE CURB, TYPE B
- REV 21+92 - 21+95 LT
- REV 22+41 - 22+65 RT
- REV 22+45 - 22+85 LT 81
- 88 REV 22+90 - 23+39 LT 42.5
- ~~REV 23+04 - 23+11 RT~~
- ~~REV 23+17 - 23+27 RT~~
- ~~REV 23+23 - 23+29 RT (UTILITY PLACEMENT)~~
- ~~REV 23+62 - 24+63 RT (BEHIND SW)~~
- ~~REV 23+62 - 23+82 RT (BACK SIDE OF ISLAND)~~
- ~~REV 23+67 - 24+57 RT~~
- ~~REV 23+79 - 24+57 LT~~
- 83

- CONSTRUCT DRIVE
- REV 23+47 RT - 30' W PAVED
- REV 23+58 LT - 30' W PAVED

- MISCELLANEOUS FENCE (MOD-BOLLARDS W/ CHAIN)
- 22+52 REV 22+54 - REV 23+14, 31.5' LT
- REV 23+25 - REV 23+39, 31.5' LT 23+38
- REV 23+79 - REV 24+57, 31.5' LT
- 46

- CONSTRUCT SIDEWALK RAMP W/ DETECTABLE WARNING SURFACE (YELLOW)
- REV 21+85 LT (TYPE 1)
- REV 22+35 RT (TYPE 6)
- REV 22+45 LT (TYPE 1)
- REV 22+88 LT (TYPE 2)
- REV 23+13 RT (TYPE 1 MOD.)

- RELOCATE WATER SHUT-OFF (BY OTHERS)
- REV 23+05 LT

- RELOCATE GAS SHUT-OFF (BY OTHERS)
- REV 22+46 LT

- HYDRANT, RELOCATE (BY OTHERS)
- REV 21+77 LT NEW LOCATION 39' LT

- 8' BITUMINOUS CONCRETE PED/BIKEWAY
- REV 22+51 - 23+44 LT
- REV 23+74 - 24+61 LT

- CHANGE ELEVATION OF SEWER MANHOLE
- REV 22+99 LT

- REHABING DL/CB OR MH CLASS II
- ~~REV 22+35 RT~~
- ~~REV 22+68 RT~~
- ~~REV 23+87 RT~~

- BRICK PAVING
- ~~REV 23+05 - 23+12 RT~~
- ~~REV 23+18 - 23+29 RT~~
- REHABING D.I., C.B., OR M.H. CLASS I
- 21+84 LT 22+35 RT 23+87 RT
- 21+90 LT 22+68 RT

- BRACING ASSEMBLY FOR CHAIN-LINK FENCE, 6 FEET
- REV 21+70 LT
- REMOVAL OF EXISTING CURB
- REV 22+54 - 22+64 LT (RR TIE LANDSCAPE AREA)
- ADJUST ELEVATION OF VALVE BOX
- REV 21+77 LT 17' 23+02 RT 12'
- REV 21+97 LT 16' 23+05 LT 23'
- REV 22+02 LT 14'
- REV 22+56 RT 29' G 22+46 LT 29'
- REV 22+90 RT
- G REV 22+94 LT 21'
- ~~REV 22+96 RT~~
- G REV 22+97 LT 23'

- PORTLAND CEMENT CONCRETE SIDEWALK, 5"
- REV 21+85 LT (RAMP)
- REV 22+35 RT (RAMP) 22+33 - 22+40 23+35 RT
- REV 22+45 LT (RAMP)
- REV 22+88 LT 22+84
- REV 23+15, 61' RT - REV 23+17, 28' RT (N. PROSPECT ST.)
- REV 23+74 - 24+50 RT
- 23+65 - 24+58

- PORTLAND CEMENT CONCRETE SIDEWALK, 8"
- REV 23+13 - 23+74 RT
- 25 65

- REMOVAL OF EXISTING FENCE
- REV 22+68 - 23+11 LT (WOOD)
- REV 23+28 - 23+37 LT (WOOD)
- REV 23+94 - 24+45 LT (WOOD)

GENERAL CONSTRUCTION PLAN

SURVEYED BY	CLD	DATE	7/89
DRAWN BY	TUS	DATE	10/93
SQUAD LEADER	JAW		
DESIGN FILE NO.	89-108		
IPARM FILE		DATE PLOTTED	JUL 30 2004
PROJECT NAME:	BURLINGTON		
PROJECT NUMBER:	MEGC 5000(15)		
SHEET	53 OF 252 SHEETS		

VIEW: CSS

DATUM	
VERTICAL	NGVD 1929
HORIZONTAL	N/A

