

**CAST-IN-PLACE CEMENT CONCRETE CURB, TYPE B**

- 12+17 - 12+23 RT
- 12+28 - 12+40 RT
- 12+00 - 12+40 RT (N. WINOOSKI AVE. - WEST SIDE)
- 12+11 - 12+78 RT (N. WINOOSKI AVE. - EAST SIDE)
- 12+96 - 13+36 RT (UTILITY PLACEMENT)
- 13+35 - 13+41 RT (HYDE ST. - WEST SIDE)
- 13+87 - 22+65 RT (HYDE ST. - EAST SIDE TO N. PROSPECT ST. - WEST SIDE)

- 12+19.5 - 12+24 LT
- 12+29 - 12+38.5 LT
- 12+89 - 12+94 LT (CURB INTO DRIVE)
- 13+15 - 13+27 LT (CURB BEHIND SIDEWALK)
- 13+51.5 - 21+77.5 LT

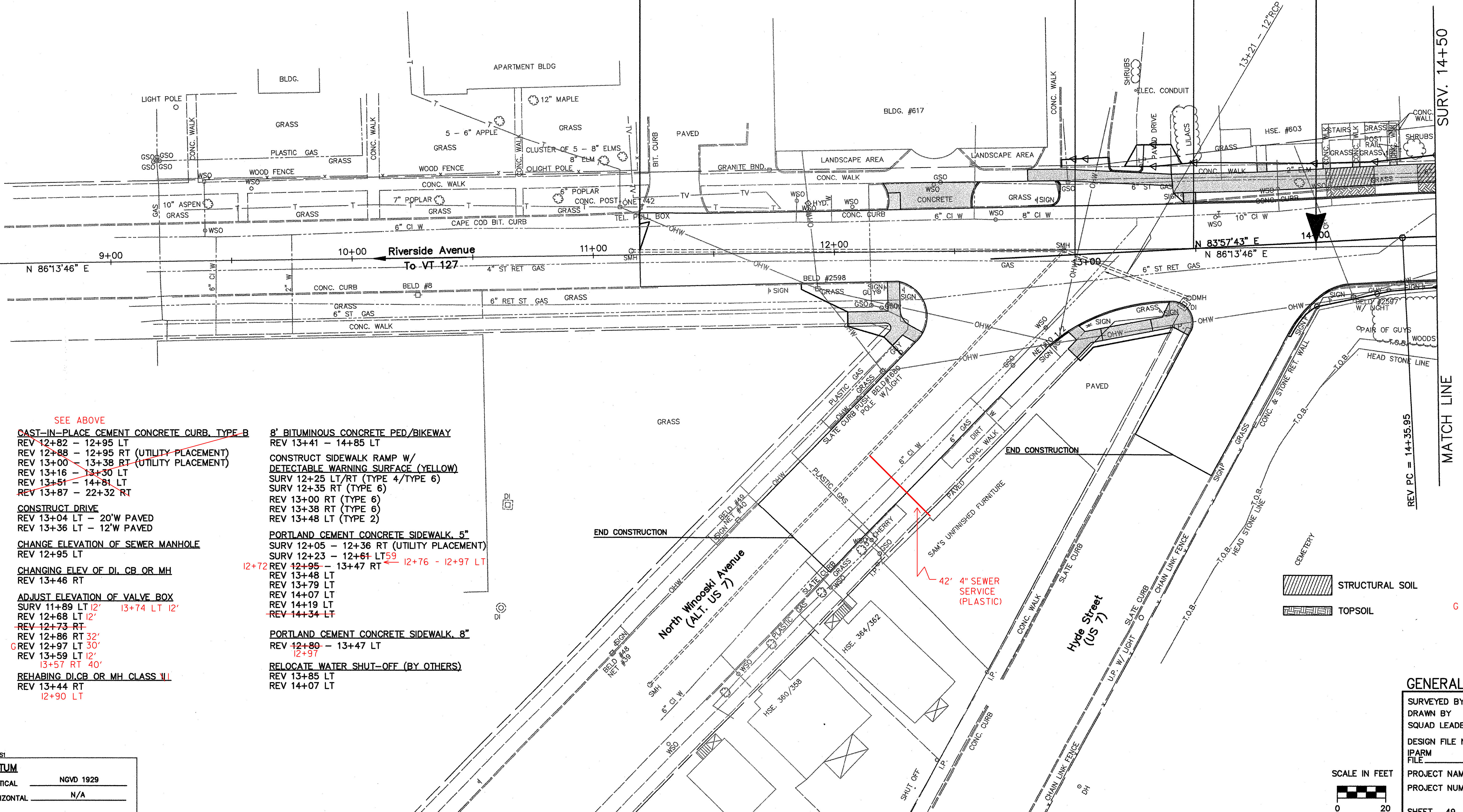


REV. STA 14+00  
END APPROACH  
BEGIN PROJECT MEGC 5000(15)

REV. STA 13+49.09 =  
SURV. STA 13+49.08  
AHEAD ANGLE = 2'16"03"

SURV. 13+00.03, 1.94' RT. =  
REV. STA 13+00

SURV. STA 11+20  
BEGIN APPROACH



- SEE ABOVE
- CAST-IN-PLACE CEMENT CONCRETE CURB, TYPE B**
- REV 12+82 - 12+95 LT
  - REV 12+88 - 12+95 RT (UTILITY PLACEMENT)
  - REV 13+00 - 13+38 RT (UTILITY PLACEMENT)
  - REV 13+16 - 13+30 LT
  - REV 13+51 - 14+81 LT
  - REV 13+87 - 22+32 RT

**CONSTRUCT DRIVE**

- REV 13+04 LT - 20' W PAVED
- REV 13+36 LT - 12' W PAVED

**CHANGE ELEVATION OF SEWER MANHOLE**

- REV 12+95 LT

**CHANGING ELEV OF DI, CB OR MH**

- REV 13+46 RT

**ADJUST ELEVATION OF VALVE BOX**

- SURV 11+89 LT 12' 13+74 LT 12'
- REV 12+68 LT 12'
- REV 12+73 RT
- REV 12+86 RT 32'
- REV 12+97 LT 30'
- REV 13+59 LT 12' 13+57 RT 40'

**REHABING DI, CB OR MH CLASS II**

- REV 13+44 RT 12+90 LT

**8' BITUMINOUS CONCRETE PED/BIKEWAY**

- REV 13+41 - 14+85 LT

**CONSTRUCT SIDEWALK RAMP W/ DETECTABLE WARNING SURFACE (YELLOW)**

- SURV 12+25 LT/RT (TYPE 4/TYP 6)
- SURV 12+35 RT (TYPE 6)
- REV 13+00 RT (TYPE 6)
- REV 13+38 RT (TYPE 6)
- REV 13+48 LT (TYPE 2)

**PORTLAND CEMENT CONCRETE SIDEWALK, 5"**

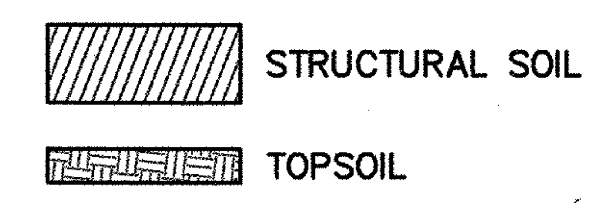
- SURV 12+05 - 12+36 RT (UTILITY PLACEMENT)
- SURV 12+23 - 12+61 LT 59
- REV 12+95 - 13+47 RT 12+76 - 12+97 LT
- REV 13+48 LT
- REV 13+79 LT
- REV 14+07 LT
- REV 14+19 LT
- REV 14+34 LT

**PORTLAND CEMENT CONCRETE SIDEWALK, 8"**

- REV 12+80 - 13+47 LT 12+97

**RELOCATE WATER SHUT-OFF (BY OTHERS)**

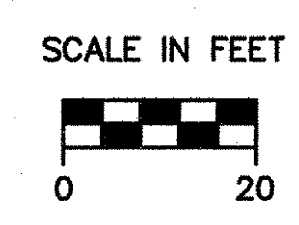
- REV 13+85 LT
- REV 14+07 LT



G - INDICATES GAS VALVE BOX

**GENERAL CONSTRUCTION PLAN**

SURVEYED BY	CLD	DATE	7/89
DRAWN BY	TUS	DATE	10/93
SQUAD LEADER	JAW		
DESIGN FILE NO.	89-108		
IPARM FILE		DATE PLOTTED	JUL 30 2004
PROJECT NAME:	BURLINGTON		
PROJECT NUMBER:	MEGC 5000(15)		
SHEET	49 OF 252 SHEETS		



VIEW: CSI

<b>DATUM</b>	
VERTICAL	NGVD 1929
HORIZONTAL	N/A