

CAST-IN-PLACE CEMENT CONCRETE CURB, TYPE B
 REV 60+71 - 60+83 RT
 REV 60+76 - 61+41 RT
 REV 61+69 - 69+01 RT
 REV 64+12 - 64+17 LT
 REV 64+23 - 64+99 LT
 REV 64+24 - 64+30 LT
 REV 64+91 - 64+98 LT
 REV 65+11 - 65+15 LT
 REV 65+24 - 71+44 LT

REHABING DI.CB OR MH CLASS II
 REV 59+84 RT

REV. CURVE DATA #10
 $\Delta = 93^{\circ}51'13''$ LT
 $D = 23^{\circ}42'03''$
 $R = 241.75$
 $T = 258.58$
 $L = 395.99$
 $E = 112.24$
 $BANK = 0.040$

SURV. CURVE DATA #9
 $\Delta = 93^{\circ}05'50''$ LT
 $D = 22^{\circ}30'00''$
 $R = 254.65$
 $T = 268.80$
 $L = 413.77$
 $E = 115.62$
 $BANK = N/A$

REV. STA 62+45.16 =
 SURV. STA 62+33.88
 AHEAD ANGLE = $1^{\circ}11'54''$

CITY OF BURLINGTON
 046-1-09-000
 175-177 RIVERSIDE AVE.

CHANGING ELEV OF DI. CB OR MH
 REV 59+82 RT

ADJUST ELEVATION OF VALVE BOX
 REV 59+57 RT
 REV 62+14 RT
 REV 65+11 RT

CONSTRUCT DRIVE
 REV 60+57 RT - 30'W PAVED
 REV 61+56 RT - 20'W PAVED
 REV 64+17 LT - 12'W PAVED
 REV 65+08 LT - 18'W PAVED

METAL HAND RAILING
 REV 62+00 - 63+00 LT

REMOVE AND REPLACE BRICK PAVING
 REV 64+04 LT
 REV 65+11 - 65+27 LT

CEMENT RUBBLE MASONRY (STONE WALL)
 (SEE SHEETS 125 & 243 FOR DETAILS)
 REV 65+11 - 65+27 LT

8" BITUMINOUS CONCRETE PED/BIKEWAY
 REV 55+06 - 63+96 LT
 REV 64+30 - 64+91 LT
 REV 65+37 - 71+44 LT

PORTLAND CEMENT CONCRETE SIDEWALK, 5"
 REV 59+56 - 60+32 RT
 REV 60+82 - 61+34 RT
 REV 64+06 LT (RAMP)
 REV 64+22 LT (RAMP)
 REV 65+00 LT (RAMP)
 REV 65+22 LT (RAMP)

PORTLAND CEMENT CONCRETE SIDEWALK, 8"
 REV 60+32 - 60+82 RT
 REV 61+34 - 61+65 RT

CONSTRUCT SIDEWALK RAMP W/
 DETECTABLE WARNING COURSE
 REV 64+06 LT (TYPE 1)
 REV 64+22 LT (TYPE 1)
 REV 65+00 LT (TYPE 1)
 REV 65+22 LT (TYPE 1)

REMOVAL AND DISPOSAL OF GUARDRAIL
 REV 65+29 - 70+90 LT

SNOW FENCE (MOD)
 REV 65+15 - 67+02 LT

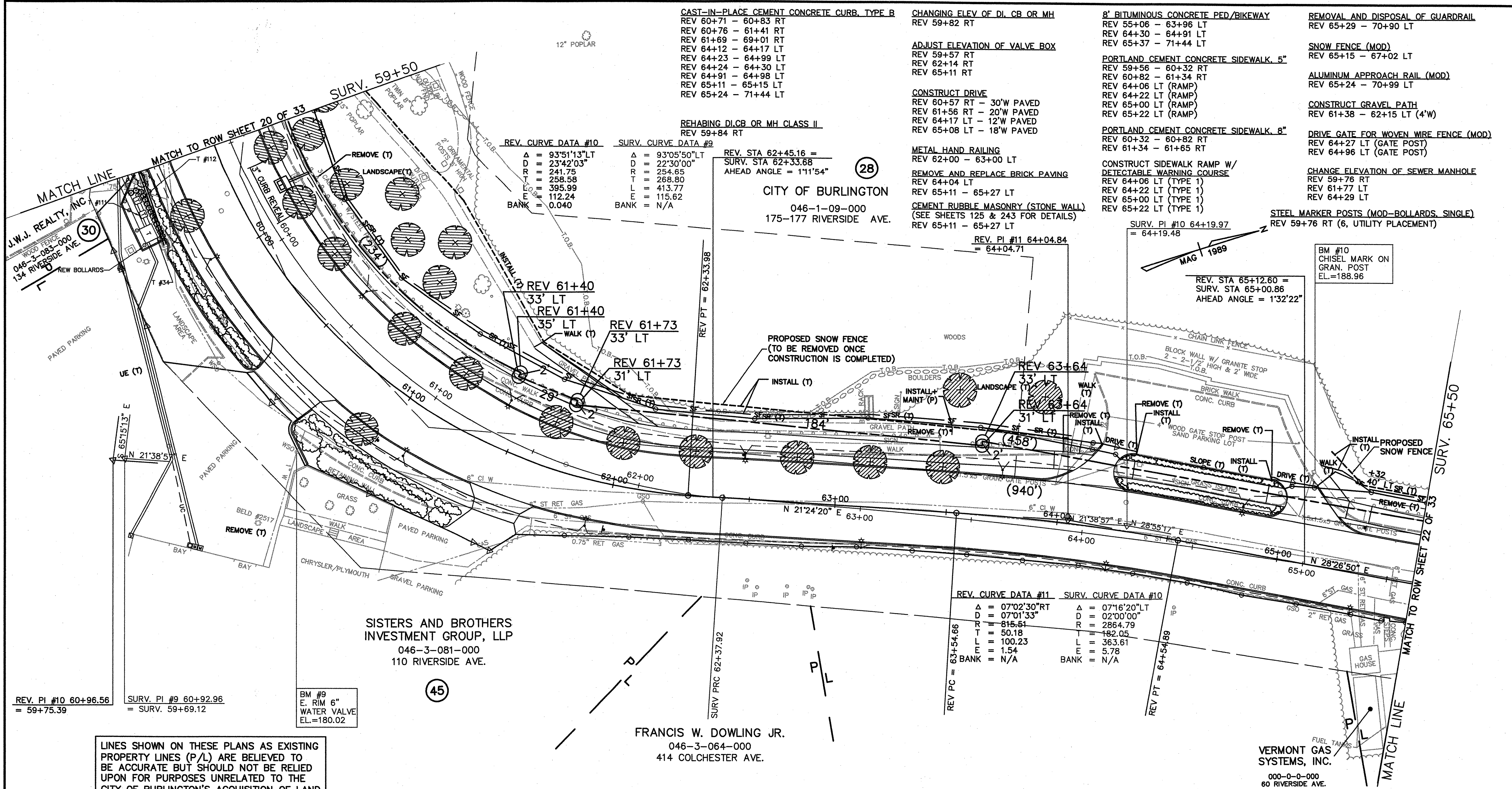
ALUMINUM APPROACH RAIL (MOD)
 REV 65+24 - 70+99 LT

CONSTRUCT GRAVEL PATH
 REV 61+38 - 62+15 LT (4'W)

DRIVE GATE FOR WOVEN WIRE FENCE (MOD)
 REV 64+27 LT (GATE POST)
 REV 64+96 LT (GATE POST)

CHANGE ELEVATION OF SEWER MANHOLE
 REV 59+76 RT
 REV 61+77 LT
 REV 64+29 LT

STEEL MARKER POSTS (MOD-BOLLARDS, SINGLE)
 REV 59+76 RT (6, UTILITY PLACEMENT)



REV. PI #10 60+96.56 = 59+75.39
 SURV. PI #9 60+92.96 = SURV. 59+69.12

BM #9
 E. RIM 6"
 WATER VALVE
 EL.=180.02

SISTERS AND BROTHERS
 INVESTMENT GROUP, LLP
 046-3-081-000
 110 RIVERSIDE AVE.

FRANCIS W. DOWLING JR.
 046-3-064-000
 414 COLCHESTER AVE.

REV. CURVE DATA #11
 $\Delta = 07^{\circ}02'30''$ RT
 $D = 07^{\circ}01'33''$
 $R = 815.51$
 $T = 50.18$
 $L = 100.23$
 $E = 1.54$
 $BANK = N/A$

SURV. CURVE DATA #10
 $\Delta = 07^{\circ}16'20''$ LT
 $D = 02^{\circ}00'00''$
 $R = 2864.79$
 $T = 182.05$
 $L = 363.61$
 $E = 5.78$
 $BANK = N/A$

VERMONT GAS SYSTEMS, INC.
 000-0-0-000
 60 RIVERSIDE AVE.

LINES SHOWN ON THESE PLANS AS EXISTING PROPERTY LINES (P/L) ARE BELIEVED TO BE ACCURATE BUT SHOULD NOT BE RELIED UPON FOR PURPOSES UNRELATED TO THE CITY OF BURLINGTON'S ACQUISITION OF LAND AND RIGHTS FOR THIS PROJECT.

REVISED 04-02-04
 RIGHT-OF-WAY PLAN

SURVEYED BY	GLD	DATE	7/89
DRAWN BY	TUS	DATE	10/93
SQUAD LEADER	JAW		
DESIGN FILE NO.	89-108		
IPARM FILE	DATE PLOTTED		
PROJECT NAME:	BURLINGTON		
PROJECT NUMBER:	MEGC 5000(15)		
ROW SHEET	21 OF 33 SHEETS		
SHEET	35 OF 252 SHEETS		

VIEW: CS10
 DATUM
 VERTICAL NGVD 1929
 HORIZONTAL N/A

