

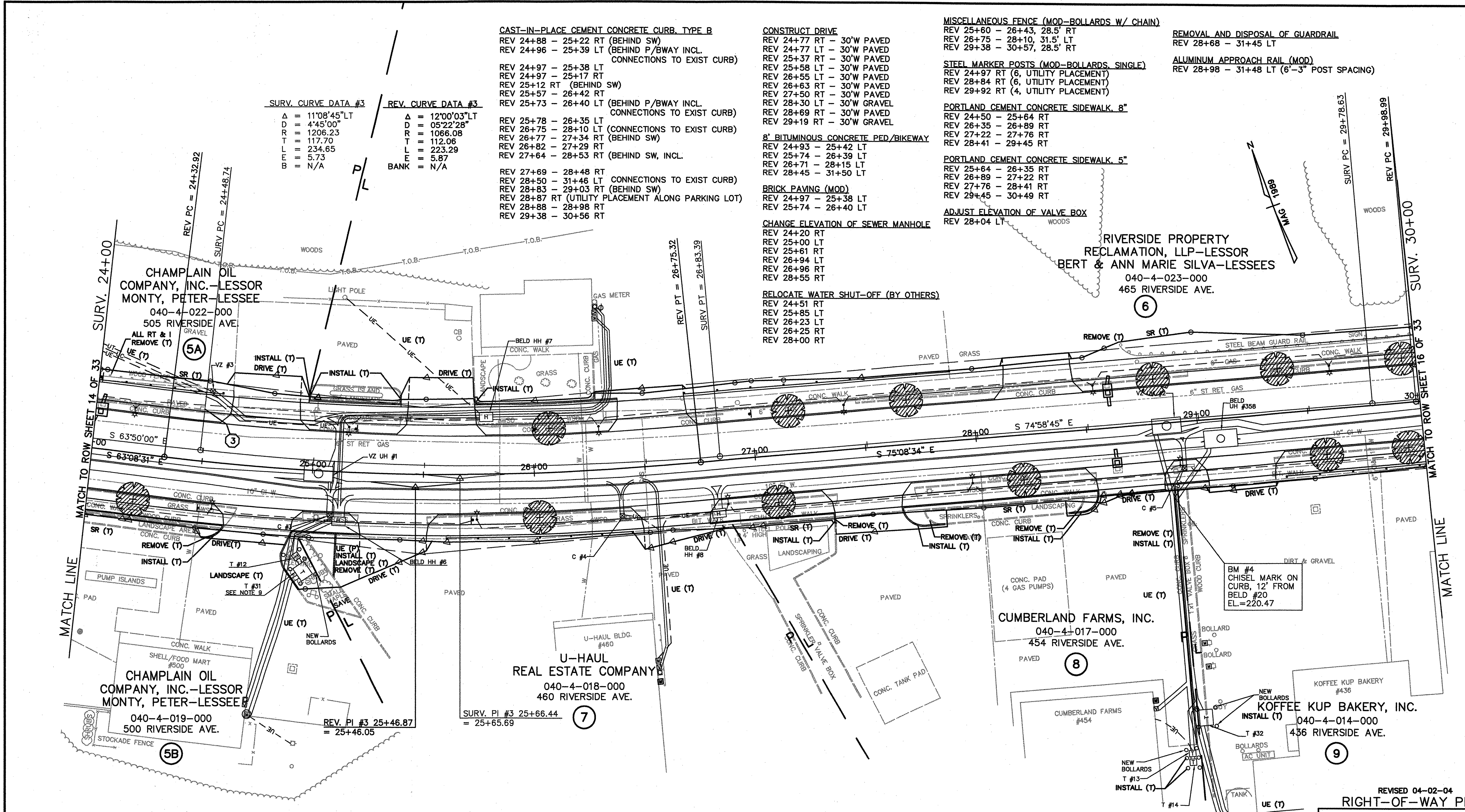
SURV. CURVE DATA #3	REV. CURVE DATA #3
Δ = 11°08'45"LT	Δ = 12°00'03"LT
D = 4'45'00"	D = 05'22'28"
R = 1206.23	R = 1066.08
T = 117.70	T = 112.06
L = 234.65	L = 223.29
E = 5.73	E = 5.87
B = N/A	BANK = N/A

- CAST-IN-PLACE CEMENT CONCRETE CURB, TYPE B**
- REV 24+88 - 25+22 RT (BEHIND SW)
  - REV 24+96 - 25+39 LT (BEHIND P/BWAY INCL CONNECTIONS TO EXIST CURB)
  - REV 24+97 - 25+38 LT
  - REV 24+97 - 25+17 RT
  - REV 25+12 RT (BEHIND SW)
  - REV 25+57 - 26+42 RT
  - REV 25+73 - 26+40 LT (BEHIND P/BWAY INCL CONNECTIONS TO EXIST CURB)
  - REV 25+78 - 26+35 LT
  - REV 26+75 - 28+10 LT (CONNECTIONS TO EXIST CURB)
  - REV 26+77 - 27+34 RT (BEHIND SW)
  - REV 26+82 - 27+29 RT
  - REV 27+64 - 28+53 RT (BEHIND SW, INCL.)
  - REV 27+69 - 28+48 RT
  - REV 28+50 - 31+46 LT (CONNECTIONS TO EXIST CURB)
  - REV 28+83 - 29+03 RT (BEHIND SW)
  - REV 28+87 RT (UTILITY PLACEMENT ALONG PARKING LOT)
  - REV 28+88 - 28+98 RT
  - REV 29+38 - 30+56 RT

- CONSTRUCT DRIVE**
- REV 24+77 RT - 30'W PAVED
  - REV 24+77 LT - 30'W PAVED
  - REV 25+37 RT - 30'W PAVED
  - REV 25+58 LT - 30'W PAVED
  - REV 26+55 LT - 30'W PAVED
  - REV 26+63 RT - 30'W PAVED
  - REV 27+50 RT - 30'W PAVED
  - REV 28+30 LT - 30'W GRAVEL
  - REV 28+69 RT - 30'W PAVED
  - REV 29+19 RT - 30'W GRAVEL
- 8" BITUMINOUS CONCRETE PED/BIKEWAY**
- REV 24+93 - 25+42 LT
  - REV 25+74 - 26+39 LT
  - REV 26+71 - 28+15 LT
  - REV 28+45 - 31+50 LT
- BRICK PAVING (MOD)**
- REV 24+97 - 25+38 LT
  - REV 25+74 - 26+40 LT
- CHANGE ELEVATION OF SEWER MANHOLE**
- REV 24+20 RT
  - REV 25+00 LT
  - REV 25+61 RT
  - REV 26+94 LT
  - REV 26+96 RT
  - REV 28+55 RT

- MISCELLANEOUS FENCE (MOD-BOLLARDS W/ CHAIN)**
- REV 25+60 - 26+43, 28.5' RT
  - REV 26+75 - 28+10, 31.5' LT
  - REV 29+38 - 30+57, 28.5' RT
- STEEL MARKER POSTS (MOD-BOLLARDS, SINGLE)**
- REV 24+97 RT (6, UTILITY PLACEMENT)
  - REV 28+84 RT (6, UTILITY PLACEMENT)
  - REV 29+92 RT (4, UTILITY PLACEMENT)
- PORTLAND CEMENT CONCRETE SIDEWALK, 8"**
- REV 24+50 - 25+64 RT
  - REV 26+35 - 26+89 RT
  - REV 27+22 - 27+76 RT
  - REV 28+41 - 29+45 RT
- PORTLAND CEMENT CONCRETE SIDEWALK, 5"**
- REV 25+64 - 26+35 RT
  - REV 26+89 - 27+22 RT
  - REV 27+76 - 28+41 RT
  - REV 29+45 - 30+49 RT
- ADJUST ELEVATION OF VALVE BOX**
- REV 28+04 LT

- REMOVAL AND DISPOSAL OF GUARDRAIL**
- REV 28+68 - 31+45 LT
- ALUMINUM APPROACH RAIL (MOD)**
- REV 28+98 - 31+48 LT (6'-3" POST SPACING)



LINES SHOWN ON THESE PLANS AS EXISTING PROPERTY LINES (P/L) ARE BELIEVED TO BE ACCURATE BUT SHOULD NOT BE RELIED UPON FOR PURPOSES UNRELATED TO THE CITY OF BURLINGTON'S ACQUISITION OF LAND AND RIGHTS FOR THIS PROJECT.

VIEW: GS4  
**DATUM**  
 VERTICAL NGVD 1929  
 HORIZONTAL N/A

SCALE IN FEET  
 0 20

REVISED 04-02-04  
**RIGHT-OF-WAY PLAN**

SURVEYED BY	GLD	DATE	7/89
DRAWN BY	TUS	DATE	10/93
SQUAD LEADER	JAW		
DESIGN FILE NO.	89-108		
IPARM FILE	DATE PLOTTED		
PROJECT NAME:	BURLINGTON		
PROJECT NUMBER:	MEGC 5000(15)		
ROW SHEET	15 OF 33 SHEETS		
SHEET	29 OF 252 SHEETS		