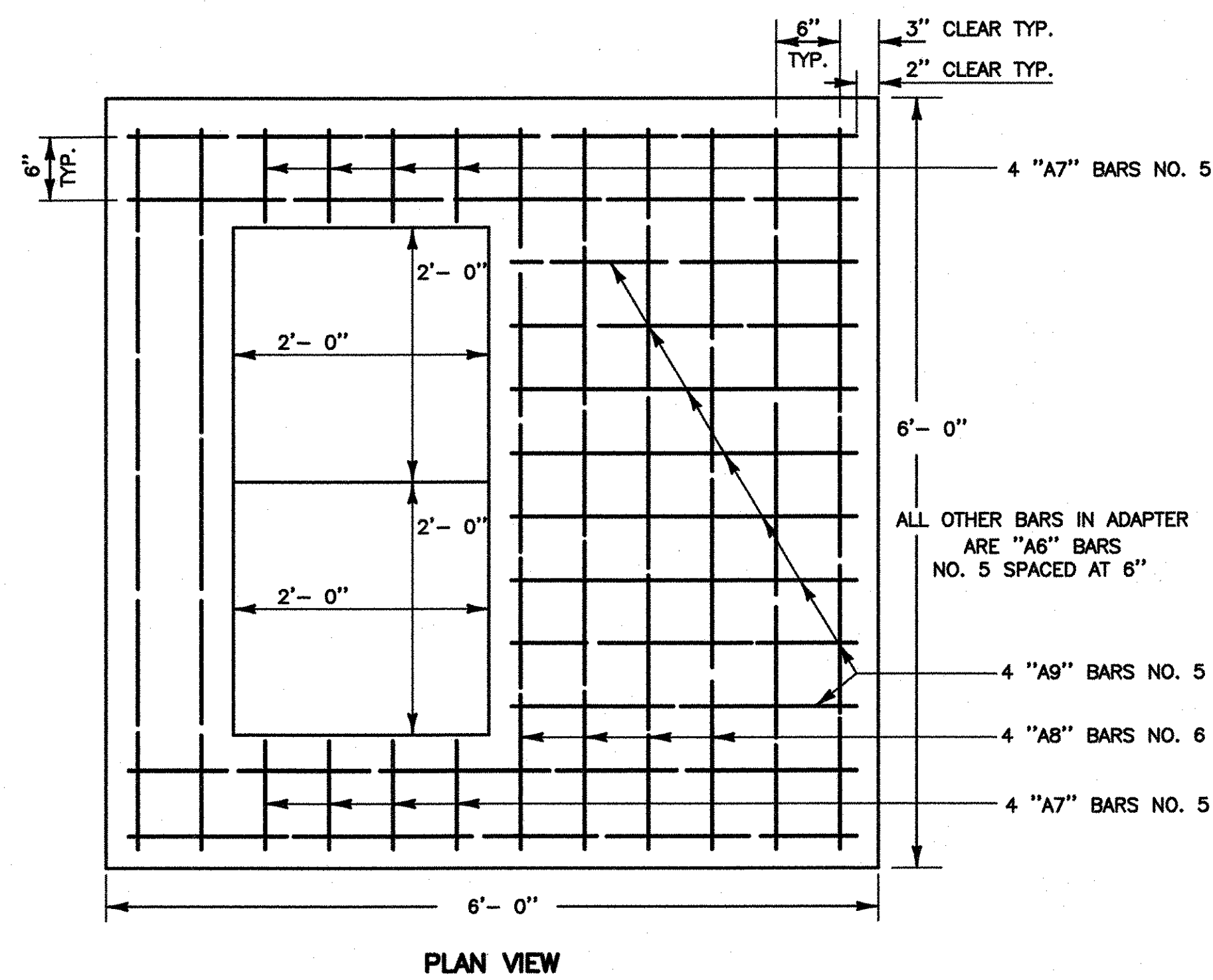
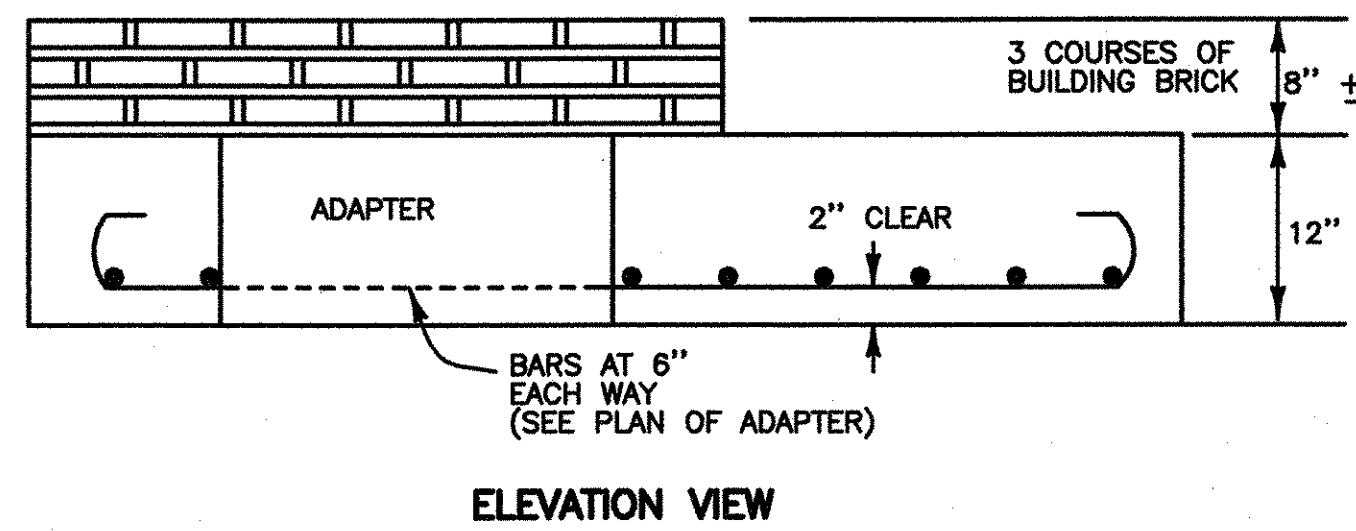


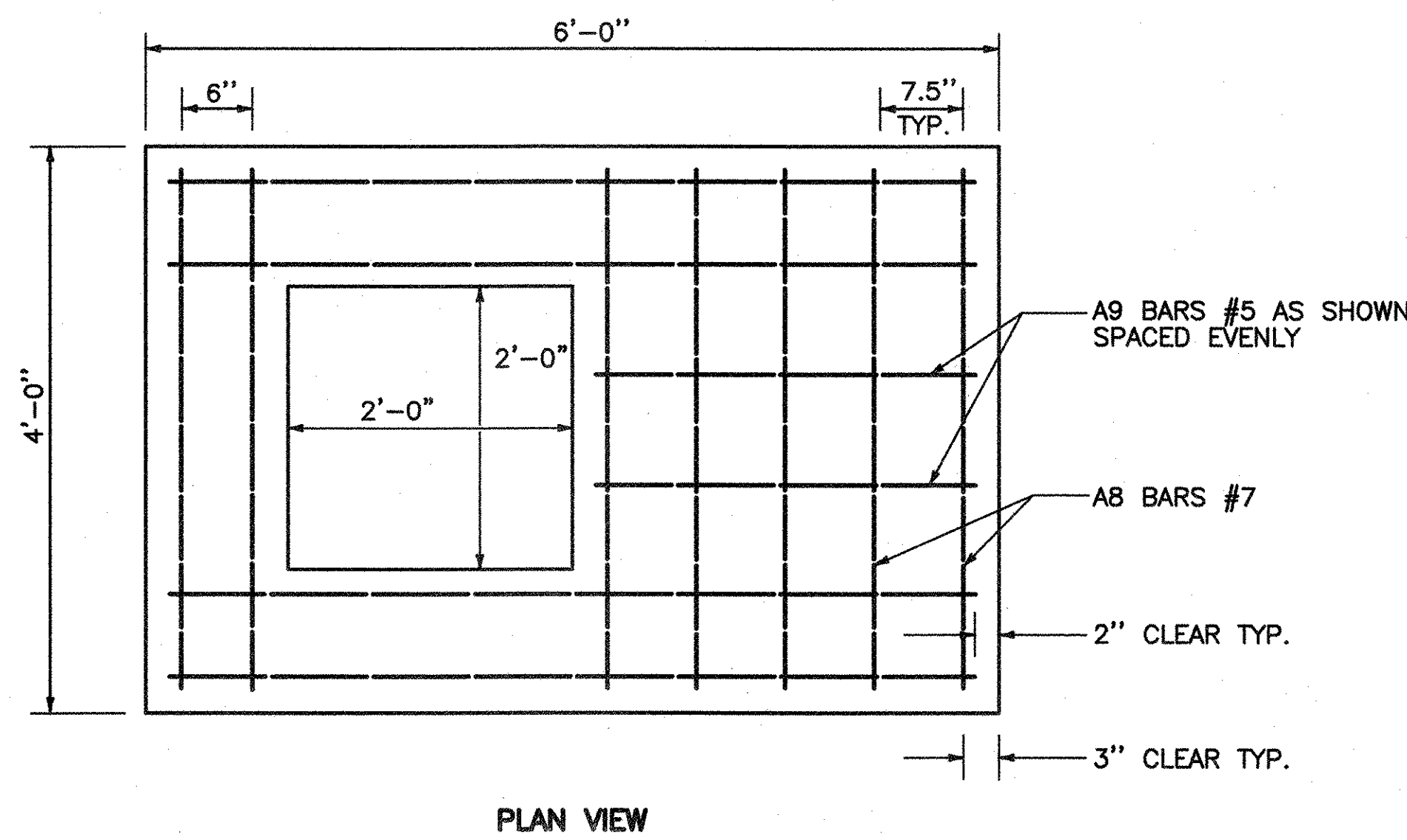
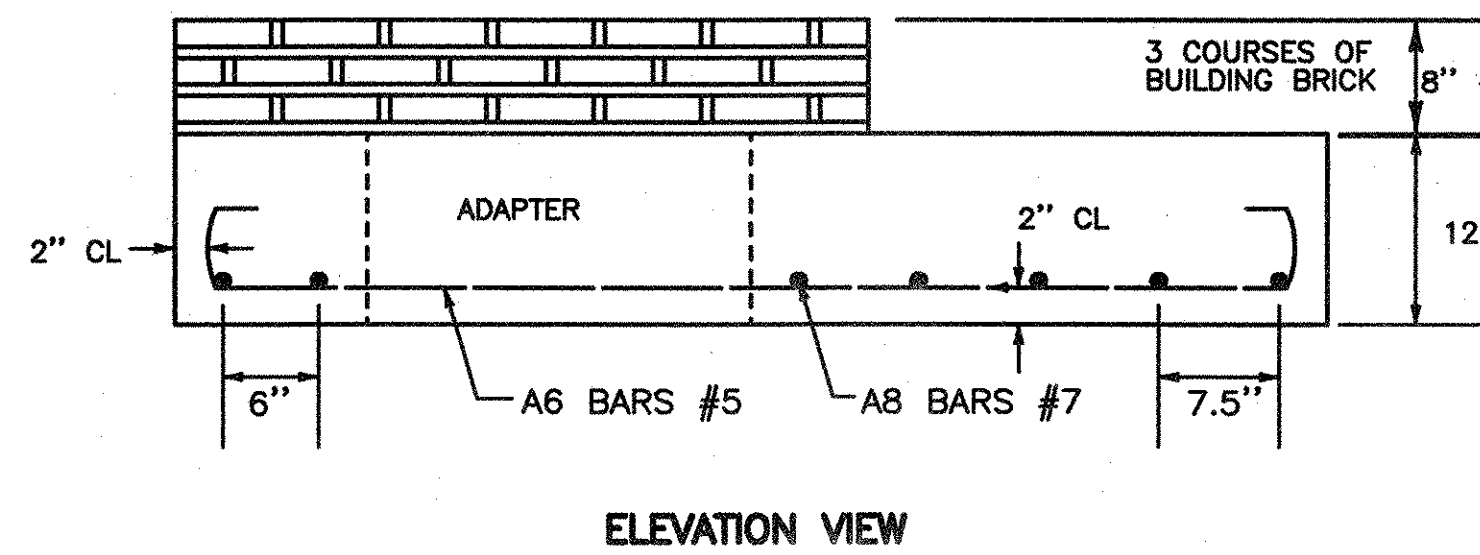
A6 BARS NO. 5 TOTAL LENGTH 6'-10" A= 7" G= 7" B=5'- 8"	A7 BARS NO. 5 TOTAL LENGTH 1'- 3" A= 7" B=8"	A8 BARS NO. 6 TOTAL LENGTH 6'- 10" A= 7" G= 7" B=5'- 8"	A9 BARS NO. 5 TOTAL LENGTH 3'- 3" A= 7" B=2'- 8"
--	---	---	---



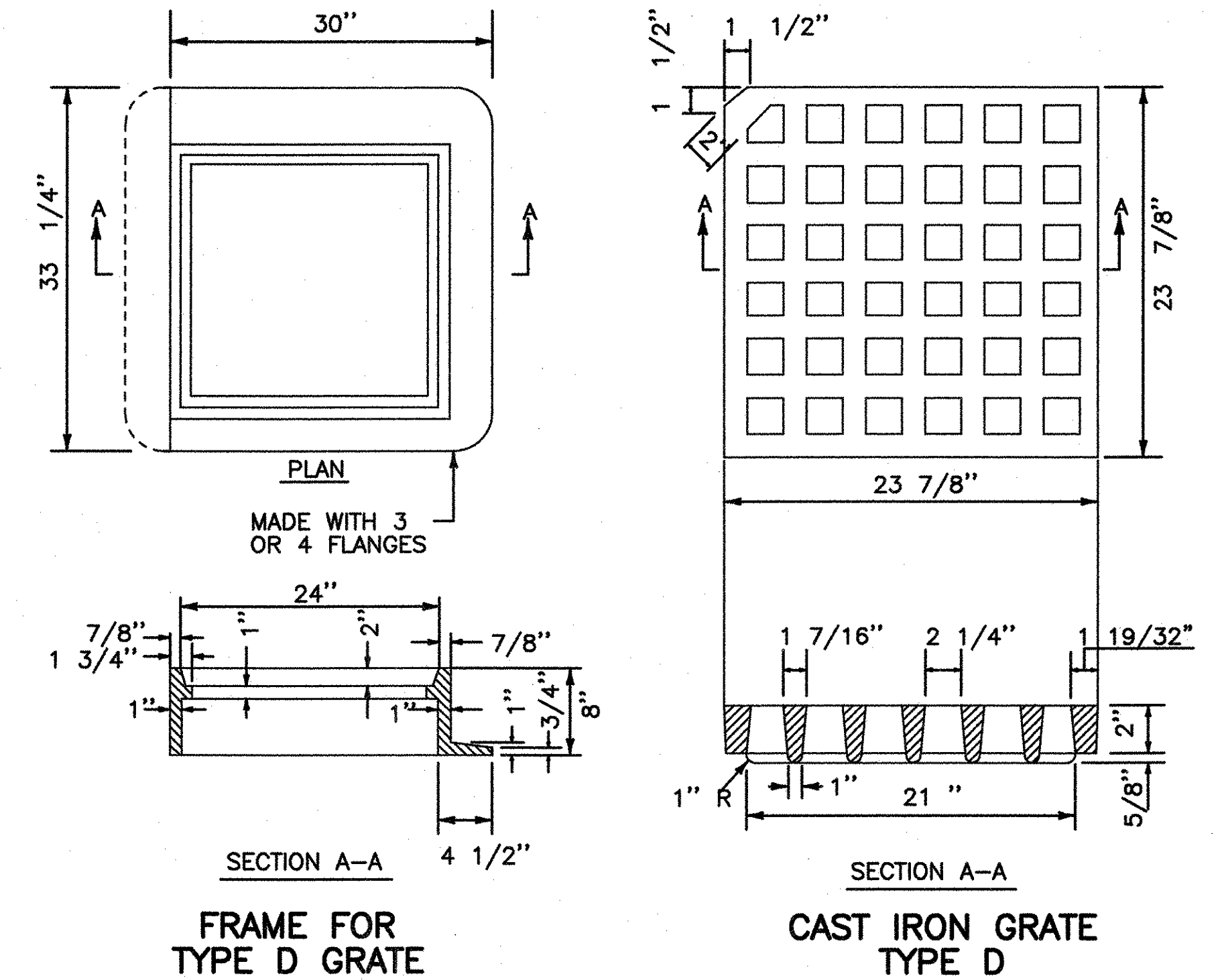
6' x 6' CATCH BASIN ADAPTER DETAIL
(SEE STD D-13 FOR GENERAL NOTES)

A6 BARS NO. 5 TOTAL LENGTH 6'- 10" A= 7" G= 7" B=5'- 8"	A8 BARS NO. 7 TOTAL LENGTH 4'- 10" A= 7" G= 7" B=3'- 8"	A9 BARS NO. 5 TOTAL LENGTH 3'- 3" A= 7" B=2'- 8"
---	---	---

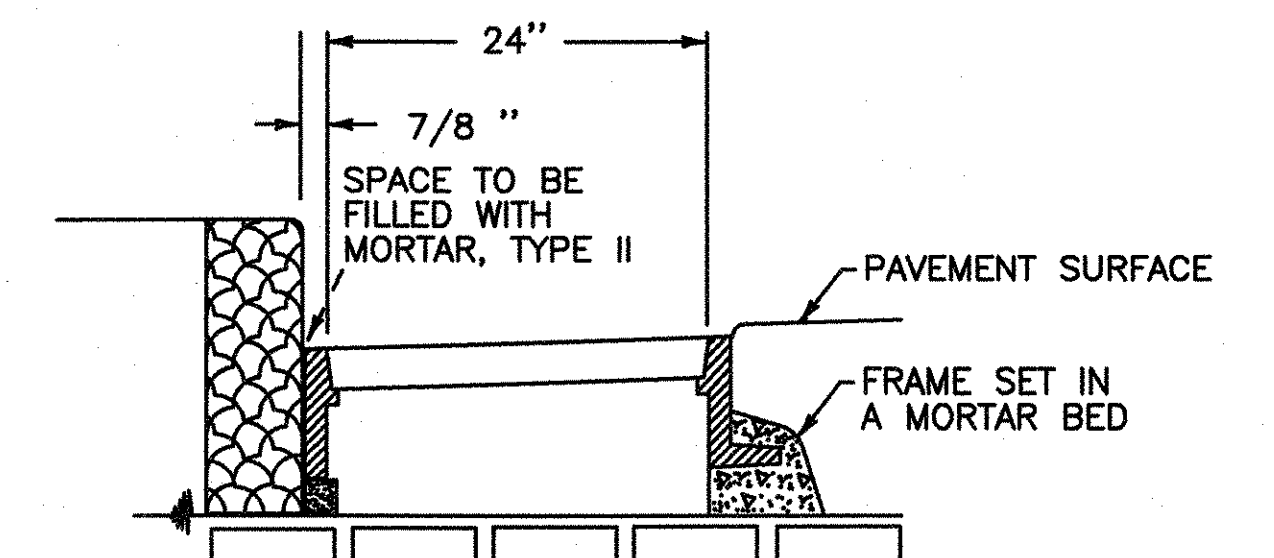
NOTE: REINFORCING STEEL FOR 4' X 6' ADAPTER



4' X 6' CATCH BASIN ADAPTER DETAIL
(SEE STD D-6 FOR GENERAL NOTES)



NOTE: 4 FLANGES UNLESS OTHERWISE INDICATED. FRAMES TO BE FURNISHED WITH 3 FLANGES WHEN USED IN CONJUNCTION WITH CURB OR AS DIRECTED BY THE ENGINEER.



DATUM
VERTICAL _____
HORIZONTAL _____

SURVEYED BY N/A DATE _____
DRAWN BY CLD DATE 05/00
SQUAD LEADER KEB
DESIGN FILE NO. _____
PRF FILE _____ DATE PLOTTED _____
PROJ. NAME BURLINGTON
PROJ. NO. MEGC 5000(15)
SHEET 7 OF 252 SHEETS