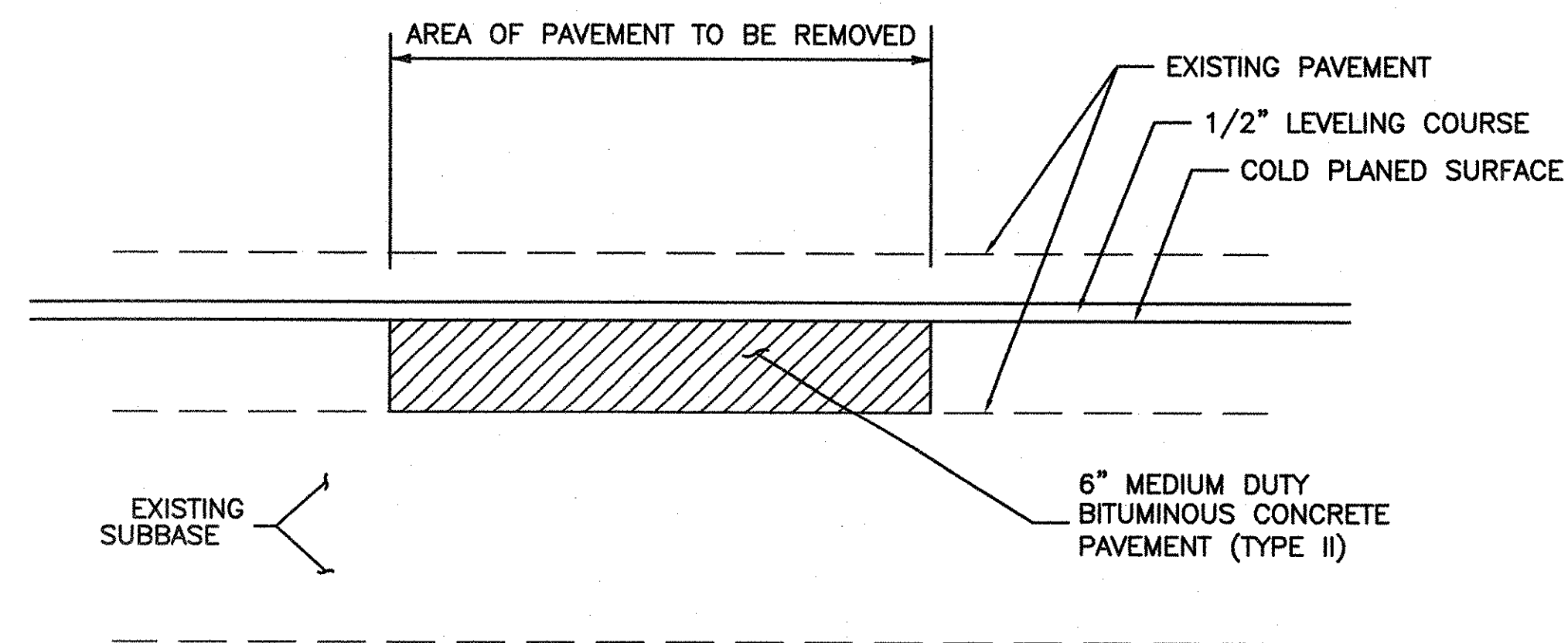
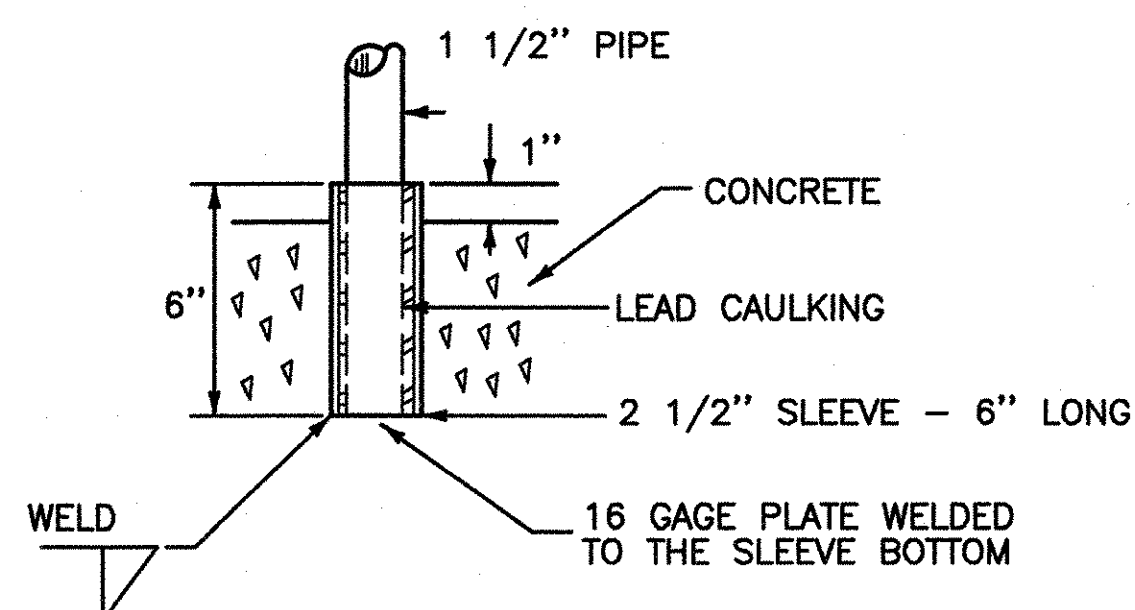
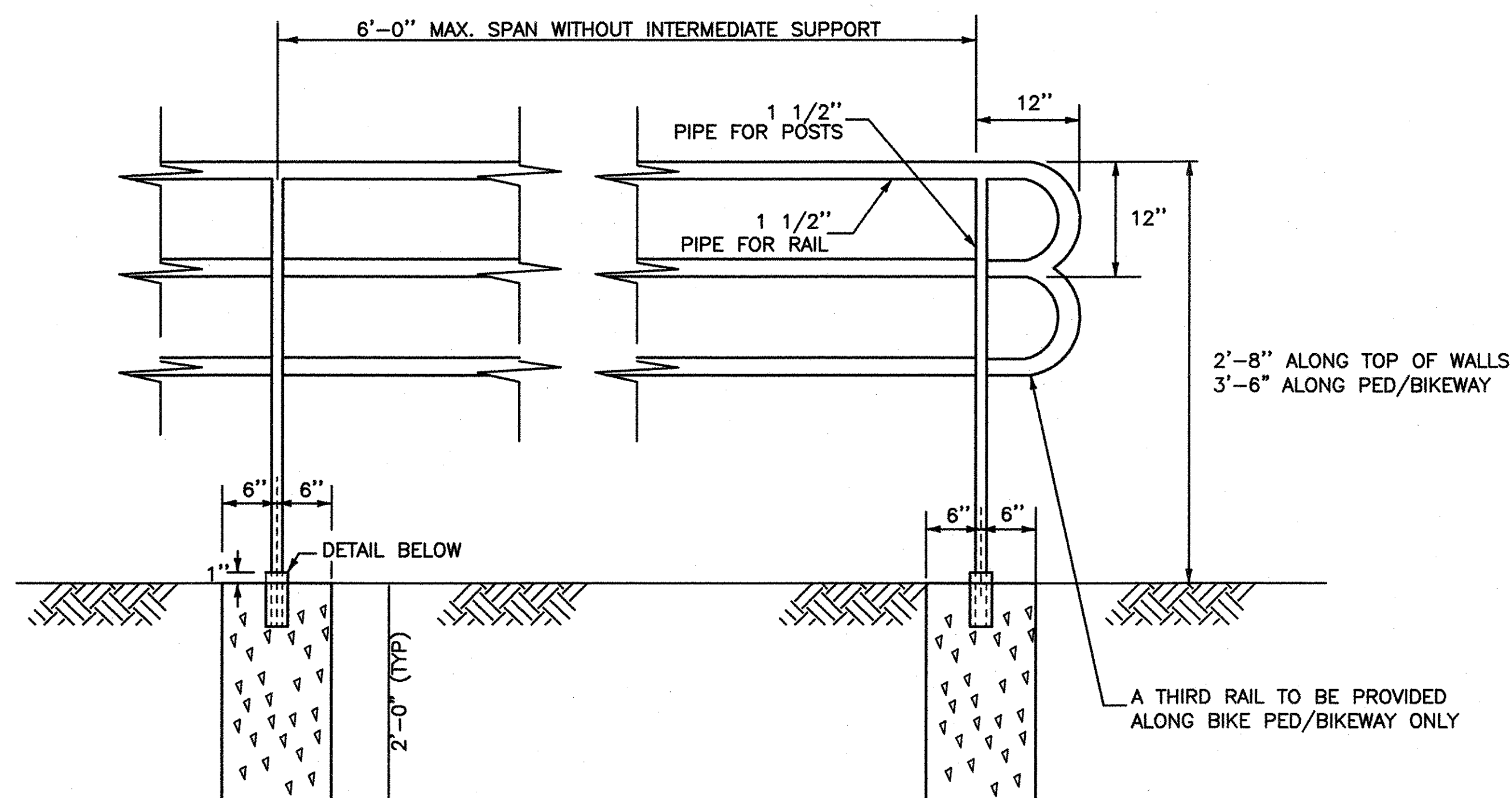


BITUMINOUS CONCRETE CURB TYPE A, MOD



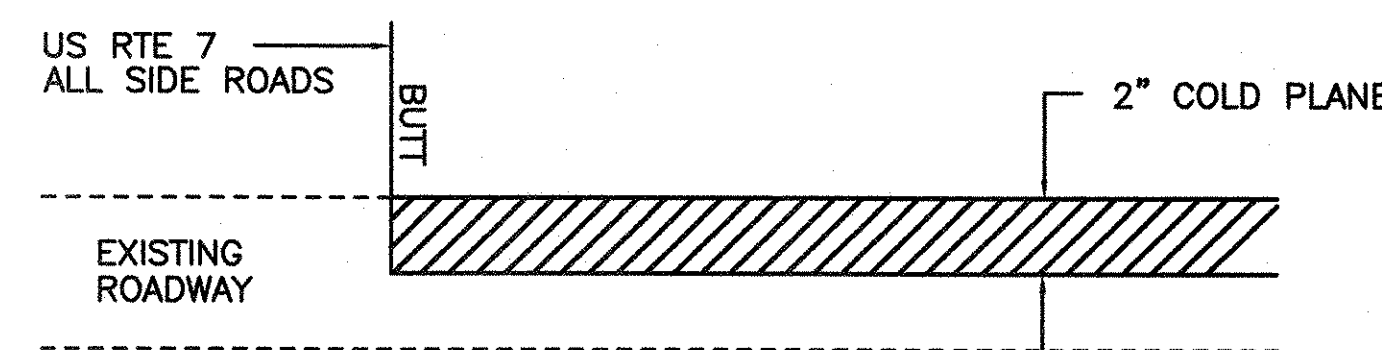
PAVEMENT PATCH DETAIL FOR POOR PAVEMENT INTEGRITY

NOTE:
IF AFTER COLD PLANING, THE RESIDENT DETERMINES THAT THE INTEGRITY OF THE REMAINING PAVEMENT IS INSUFFICIENT, THE CONTRACTOR SHALL REMOVE PAVEMENT (AND SUBBASE IF NECESSARY) AS DIRECTED BY THE ENGINEER AND RECONSTRUCT THE ROADWAY AS SHOWN. PAVEMENT PATCHES SHALL BE CONSTRUCTED PRIOR TO PLACEMENT OF THE LEVELING COURSE.



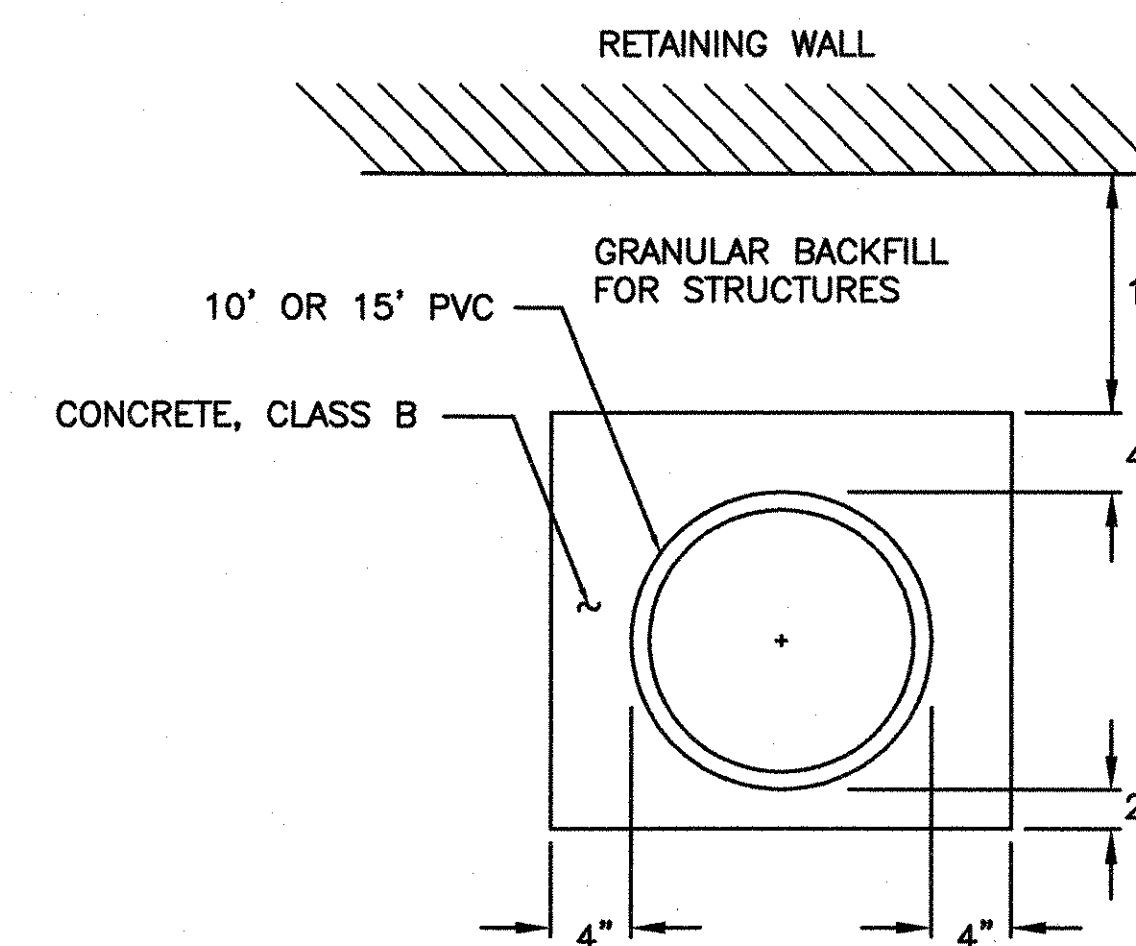
METAL HAND RAILING DETAIL
(SEE STD J-2 FOR GENERAL NOTES)

DATUM
VERTICAL _____
HORIZONTAL _____

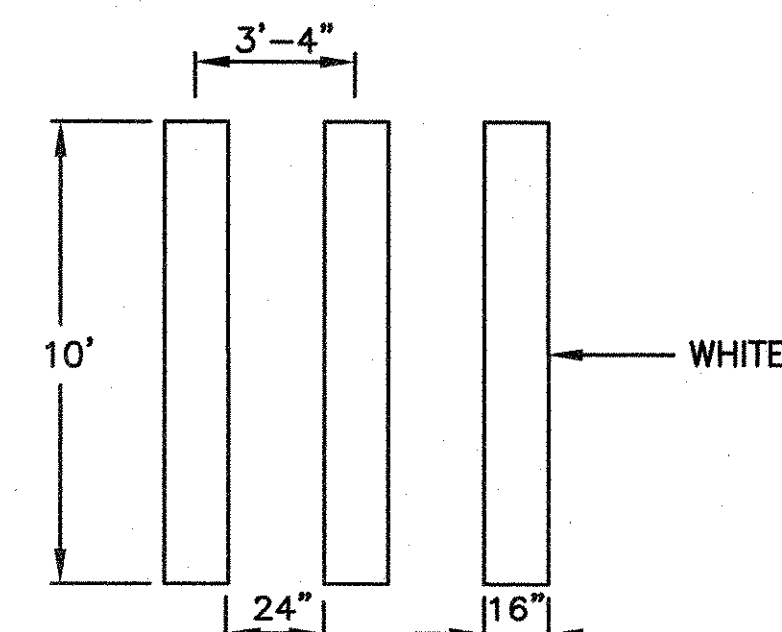


COLD PLANE TRANSITION DETAIL

TO BE USED AT THE LIMITS OF THE PROJECT AND ALL SIDE ROADS



SLEEVES FOR UTILITIES (CONCRETE ENCASED)



CROSS WALK MARKING W/ DIAGONAL LINES (TYPE I TAPE) (MOD)
TEMPORARY CROSSWALK MARKING W/ DIAGONAL LINES (MOD)

SURVEYED BY	N/A	DATE	
DRAWN BY	EMW	DATE	07/09/03
SQUAD LEADER	JAW		
DESIGN FILE NO.			
PRF FILE		DATE PLOTTED	
PROJ. NAME	BURLINGTON		
PROJ. NO.	MEGC 5000(15)		
SHEET	6	OF	252 SHEETS