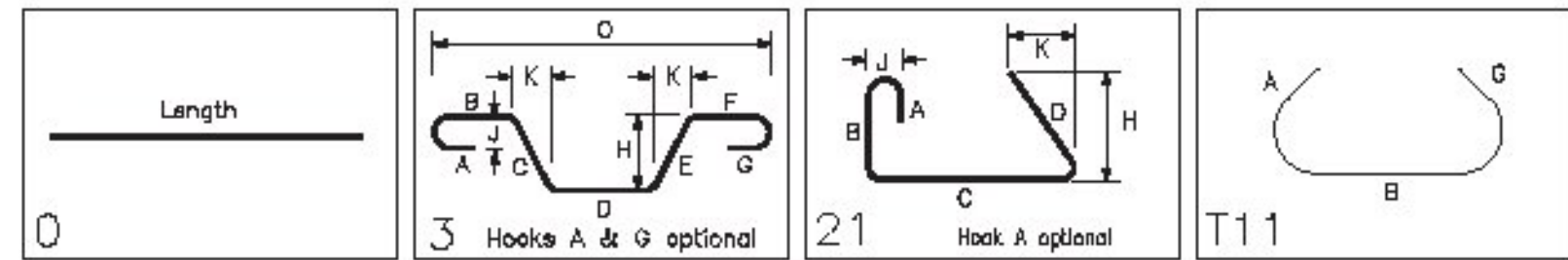


Drawing Sheet : J														BAR LIST													
Bar Mark	Qty	Size	Total Length	Type	'A'	'B'	'C'	'D'	'E'	'F'	'G'	'H'	'I'	'J'	'K'	'L'	'M'	'N'									
5J201	1	#5	2'-0"	T11	0'-5 1/2"	1'-1"					0'-5 1/2"																
5J202	1	#5	10'-5"	3		9'-1"	1'-4"				0'-9 1/2"			1'-0 1/2"	10'-1 1/2"												
5J203	4	#5	8'-0 1/2"	21							0'-4"			0'-3 1/2"													
5J204a	1	#5	2'-6"			2'-6"																					
5J204b	1	#5	4'-0"			4'-0"																					
5J204c	1	#5	5'-4"			5'-4"																					
5J204d	1	#5	6'-8"			6'-8"																					
5J204e	1	#5	8'-0"			8'-0"																					
5J205a	2	#5	3'-6 1/2"	21			3'-1"	0'-5 1/2"				0'-4"		0'-3 1/2"													
5J205b	2	#5	4'-3 1/2"	21			3'-10"	0'-5 1/2"				0'-4"		0'-3 1/2"													
5J205c	2	#5	5'-0 1/2"	21			4'-7"	0'-5 1/2"				0'-4"		0'-3 1/2"													
5J205d	2	#5	5'-9 1/2"	21			5'-4"	0'-5 1/2"				0'-4"		0'-3 1/2"													
5J205e	2	#5	6'-6 1/2"	21			6'-1"	0'-5 1/2"				0'-4"		0'-3 1/2"													
5J205f	2	#5	7'-3 1/2"	21			6'-10"	0'-5 1/2"				0'-4"		0'-3 1/2"													
5J205g	2	#5	8'-0 1/2"	21			7'-7"	0'-5 1/2"				0'-4"		0'-3 1/2"													
5J205h	2	#5	8'-9 1/2"	21			8'-4"	0'-5 1/2"				0'-4"		0'-3 1/2"													
5J206a	1	#5	3'-2"			3'-2"																					
5J206b	1	#5	4'-5"			4'-5"																					
5J206c	1	#5	5'-8"			5'-8"																					
5J206d	1	#5	6'-11"			6'-11"																					
5J206e	1	#5	8'-2"			8'-2"																					
5J207	1	#5	10'-6"	3			8'-7"	1'-11"				1'-2 1/2"		1'-5 1/2"	10'-0 1/2"												
5J208	4	#5	8'-10 1/2"	21			8'-5"	0'-5 1/2"				0'-4"		0'-3 1/2"													
5J209a	2	#5	3'-6 1/2"	21			3'-1"	0'-5 1/2"				0'-4"		0'-3 1/2"													
5J209b	2	#5	4'-2 1/2"	21			3'-9 1/2"	0'-5 1/2"				0'-4"		0'-3 1/2"													
5J209c	2	#5	4'-11"	21			4'-5 1/2"	0'-5 1/2"				0'-4"		0'-3 1/2"													
5J209d	2	#5	5'-7 1/2"	21			5'-1 1/2"	0'-5 1/2"				0'-4"		0'-3 1/2"													
5J209e	2	#5	6'-3 1/2"	21			5'-10"	0'-5 1/2"				0'-4"		0'-3 1/2"													
5J209f	2	#5	6'-11 1/2"	21			6'-6 1/2"	0'-5 1/2"				0'-4"		0'-3 1/2"													
5J209g	2	#5	7'-8"	21			7'-2 1/2"	0'-5 1/2"				0'-4"		0'-3 1/2"													
5J209h	2	#5	8'-4 1/2"	21			7'-11"	0'-5 1/2"				0'-4"		0'-3 1/2"													
7J201	1	#7	10'-6"	3			8'-1"	1'-5"				0'-10 1/2"		1'-1 1/2"	10'-2 1/2"												

Drawing Sheet : J														BAR LIST													
Bar Mark	Qty	Size	Total Length	Type	'A'	'B'	'C'	'D'	'E'	'F'	'G'	'H'	'I'	'J'	'K'	'L'	'M'	'N'									
7J202a	1	#7	2'-1"			2'-1"																					
7J202b	1	#7	2'-9"			2'-9"																					
7J202c	1	#7	3'-5"			3'-5"																					
7J202d	1	#7	4'-1"			4'-1"																					
7J202e	1	#7	4'-9"			4'-9"																					
7J202f	1	#7	5'-5"			5'-5"																					
7J202g	1	#7	6'-1"			6'-1"																					
7J202h	1	#7	6'-9"			6'-9"																					
7J202i	1	#7	7'-5"			7'-5"																					
7J202j	1	#7	8'-1"			8'-1"																					
7J203a	1	#7	2'-7"			2'-7"																					
7J203b	1	#7	3'-2"			3'-2"																					
7J203c	1	#7	3'-10"			3'-10"																					
7J203d	1	#7	4'-5"			4'-5"																					
7J203e	1	#7	5'-1"			5'-1"																					
7J203f	1	#7	5'-8"			5'-8"																					
7J203g	1	#7	6'-4"			6'-4"																					
7J203h	1	#7	6'-11"			6'-11"																					
7J203i	1	#7	7'-7"			7'-7"																					
7J203j	1	#7	8'-3"			8'-3"																					
7J204	1	#7	10'-7"	3			8'-7"	2'-0"				1'-3"		1'-6 1/2"	10'-1 1/2"												



Vermont Agency of Transportation

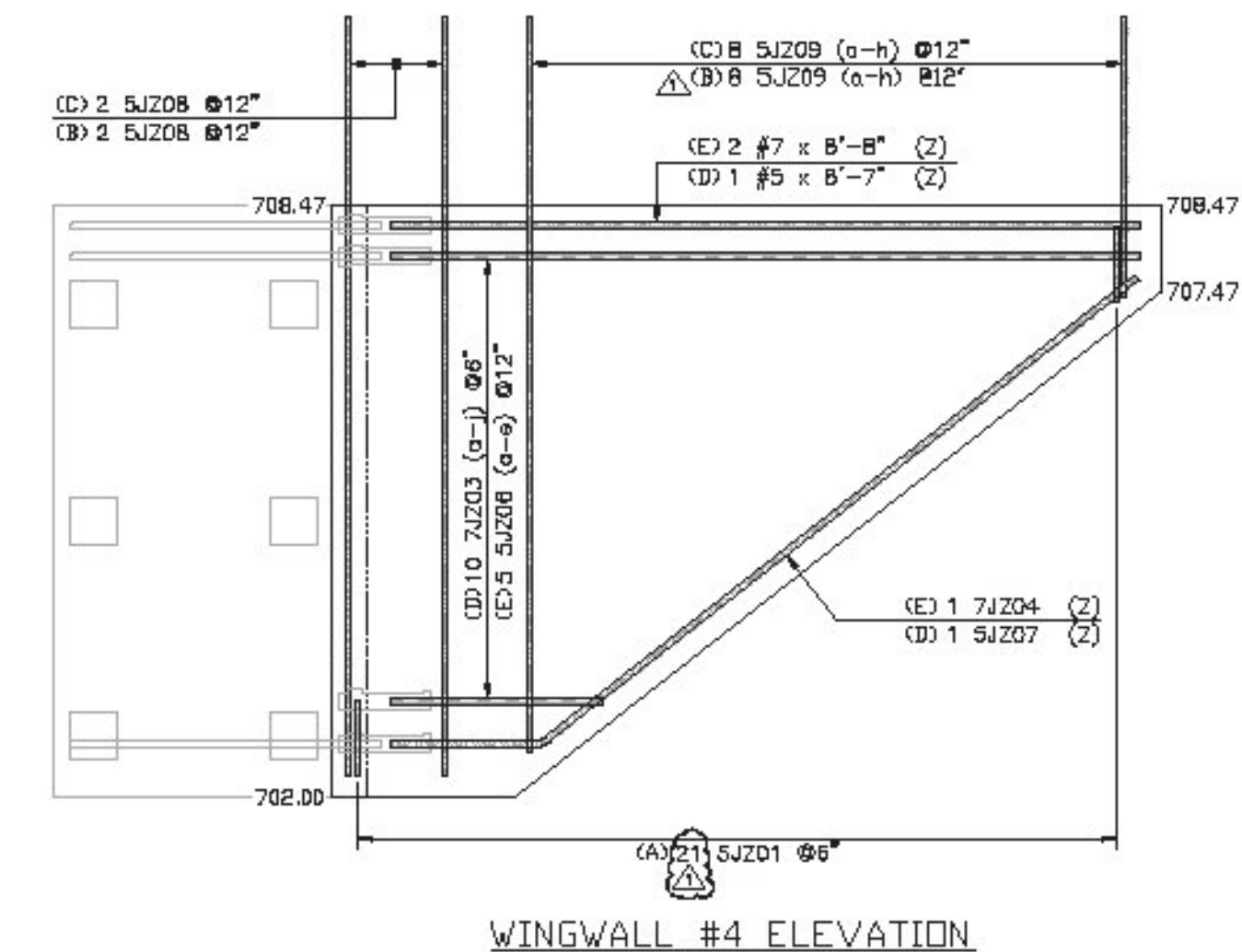
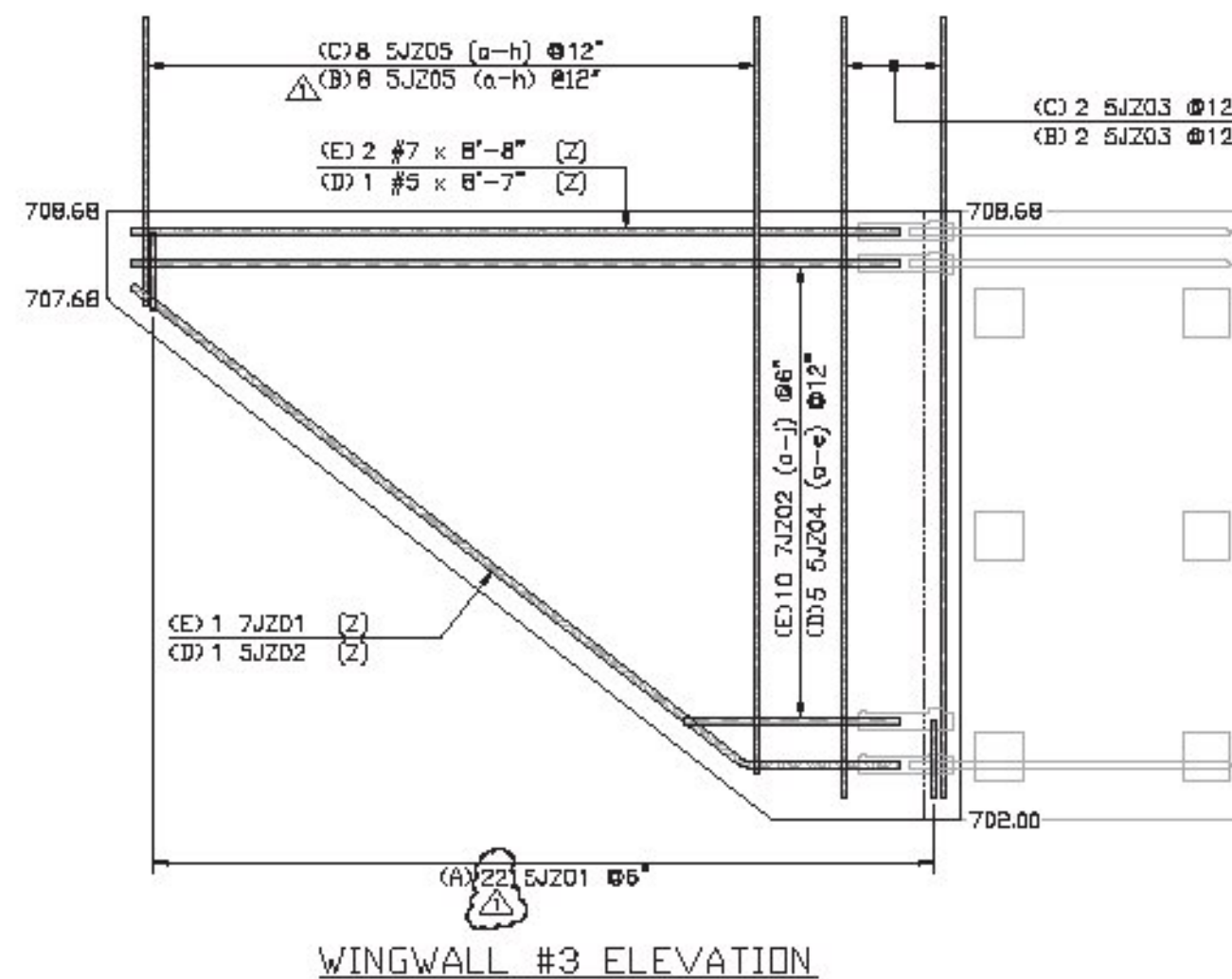
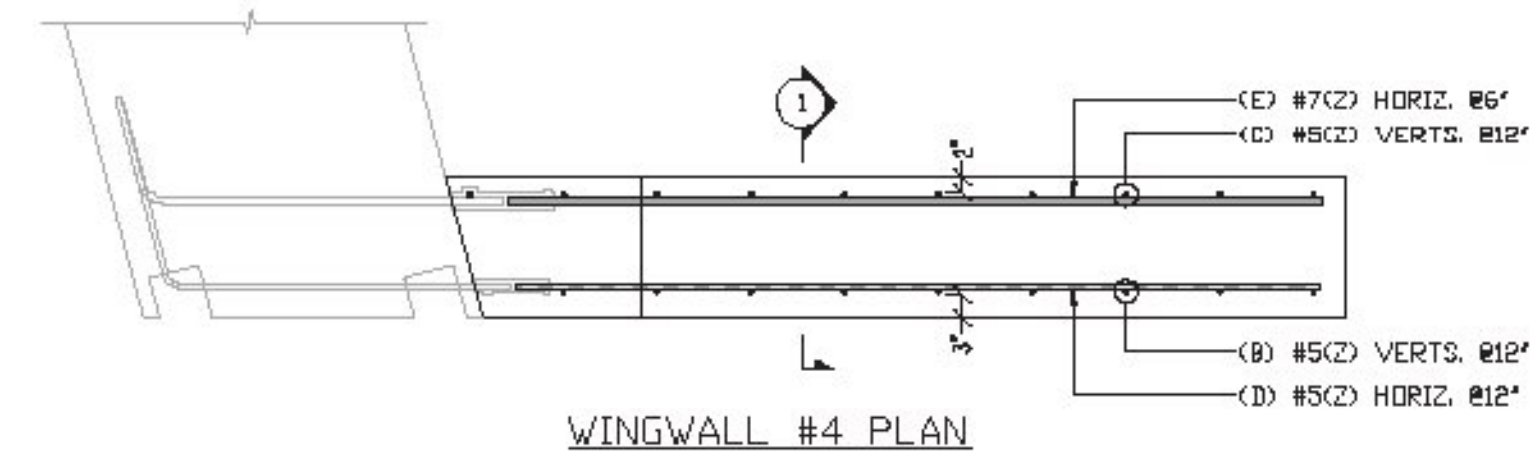
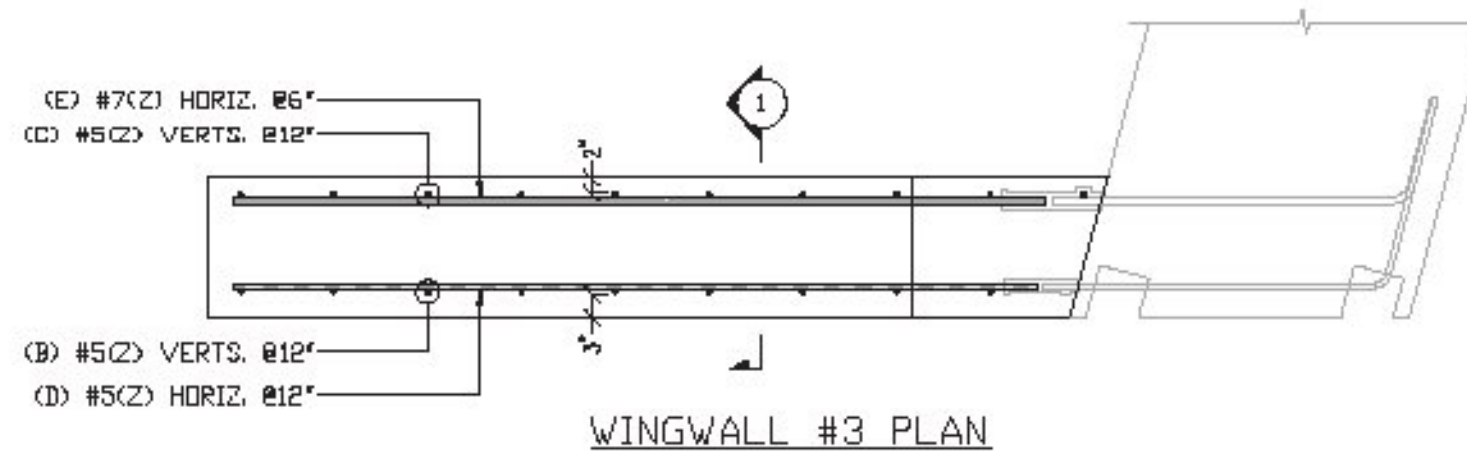
RECEIVED

Approved 01/15/15

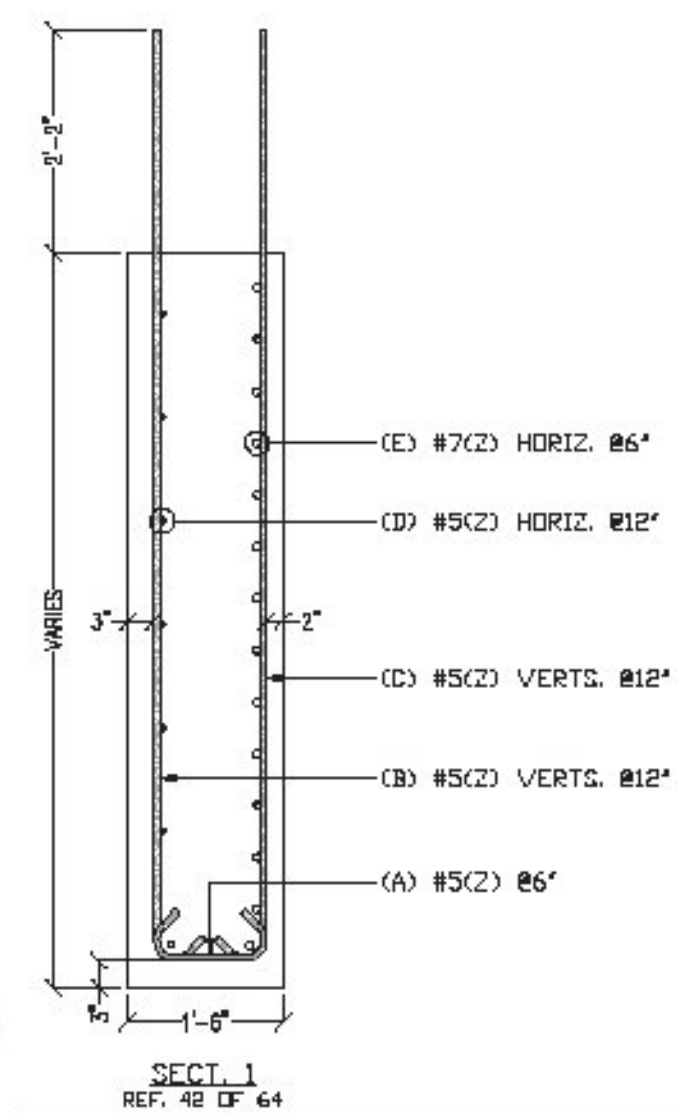
CK'D BY CLB OK'D BY DRP

January 13, 2015

RESUBMIT NO Approved
 BY C. CARSLON DATE 01/15/15



(Z) 5'-0" LONG SAMPLE BARS WILL BE PROVIDED FOR EACH BAR SIZE



FOR APPROVAL

LEGEND:
 CONT.-CONTINUOUS
 TRANS.-TRANSVERSE
 DWLS.-DOWELS
 VERTS.-VERTICAL
 HORIZ.-HORIZONTAL
 T&B -TOP & BOTTOM
 I.F.-INNER FACE
 O.F.-OUTER FACE
 E.E.-EACH END
 E.F.-EACH FACE
 F.F.-FRONT FACE
 R.F.-REAR FACE
 E.W.-EACH WAY
 O.C.-ON CENTER
 L.W.-LONG WAY
 S.W.-SHORT WAY

ALL DUAL COATED REINF. DENOTED (Z)

ELEVATIONS & DIMENSIONS SHOWN ON THIS DWG. ARE FOR REINF. DETAILING PURPOSES ONLY AND ARE NOT INTENDED FOR CONSTRUCTION.

REINF. BARS ASTM A615 GRADE 60 DUAL COATED

VERIFICATION OF UNCLEAR INFORMATION MAY BE REQUESTED ON THIS DRAWING. SHOULD VERIFICATION BE LEFT UN-ADDRESSED IT WILL REMAIN AS SHOWN AND ASSUME TO BE CORRECT.

5			
4			
3			
2	1/12/15	REVISD/SD COM/ FOR APPROVAL	
1	12-05-14	FOR APPROVAL	
DATE	REV#	SENT FOR	
DIMENSION			
CONSTRUCTION FABRICATORS INC.			
VTADT STOWE BRG 0235(11)			
LOCATION			
PROJECT			
CONTRACT			
DRAWING NO.	SD IRELAND CONCRETE CONST. CORP.	DATE	12/5/14
ED		DATE	9/117
DRAWN BY		DATE	12/5/14
ED		DATE	9/117
DRAWN BY		DATE	12/5/14
ED		DATE	9/117
WINGWALLS 3 & 4			
DUAL COATED REINFORCING			
J			