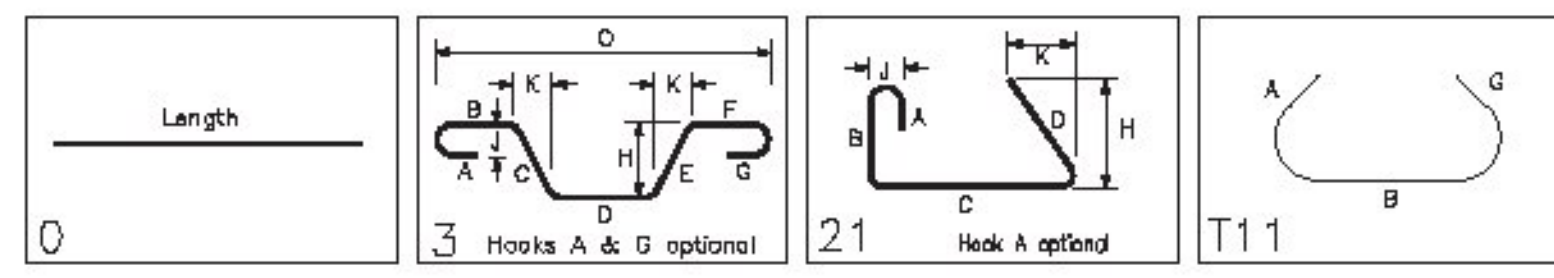
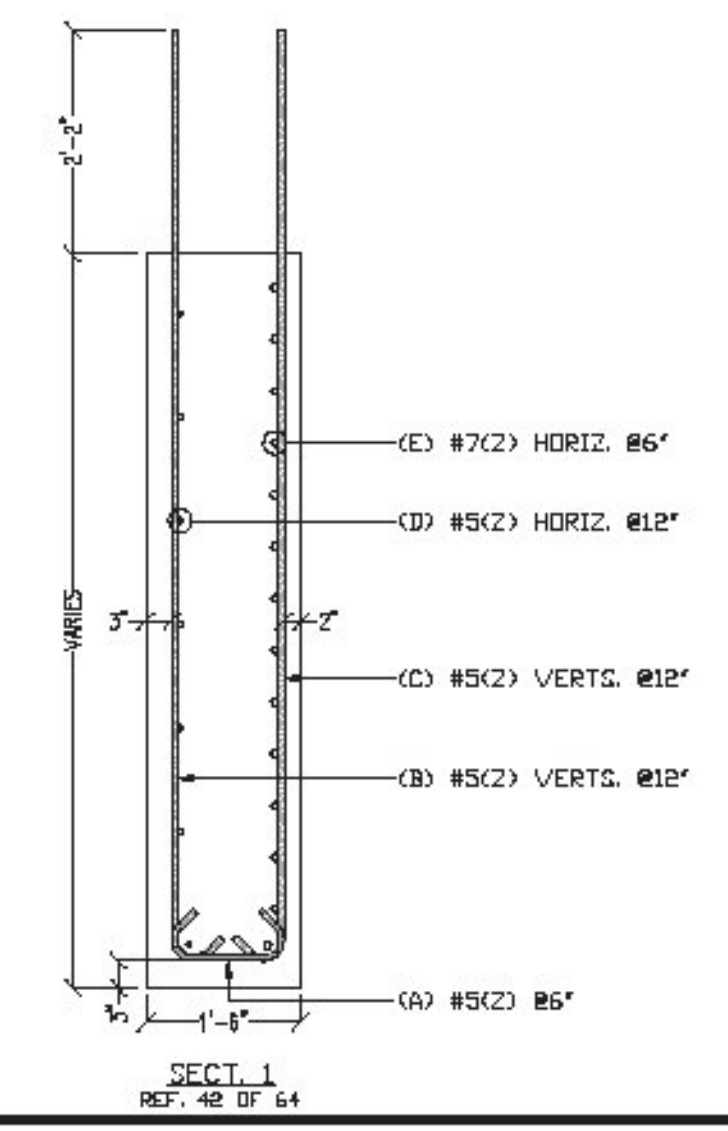
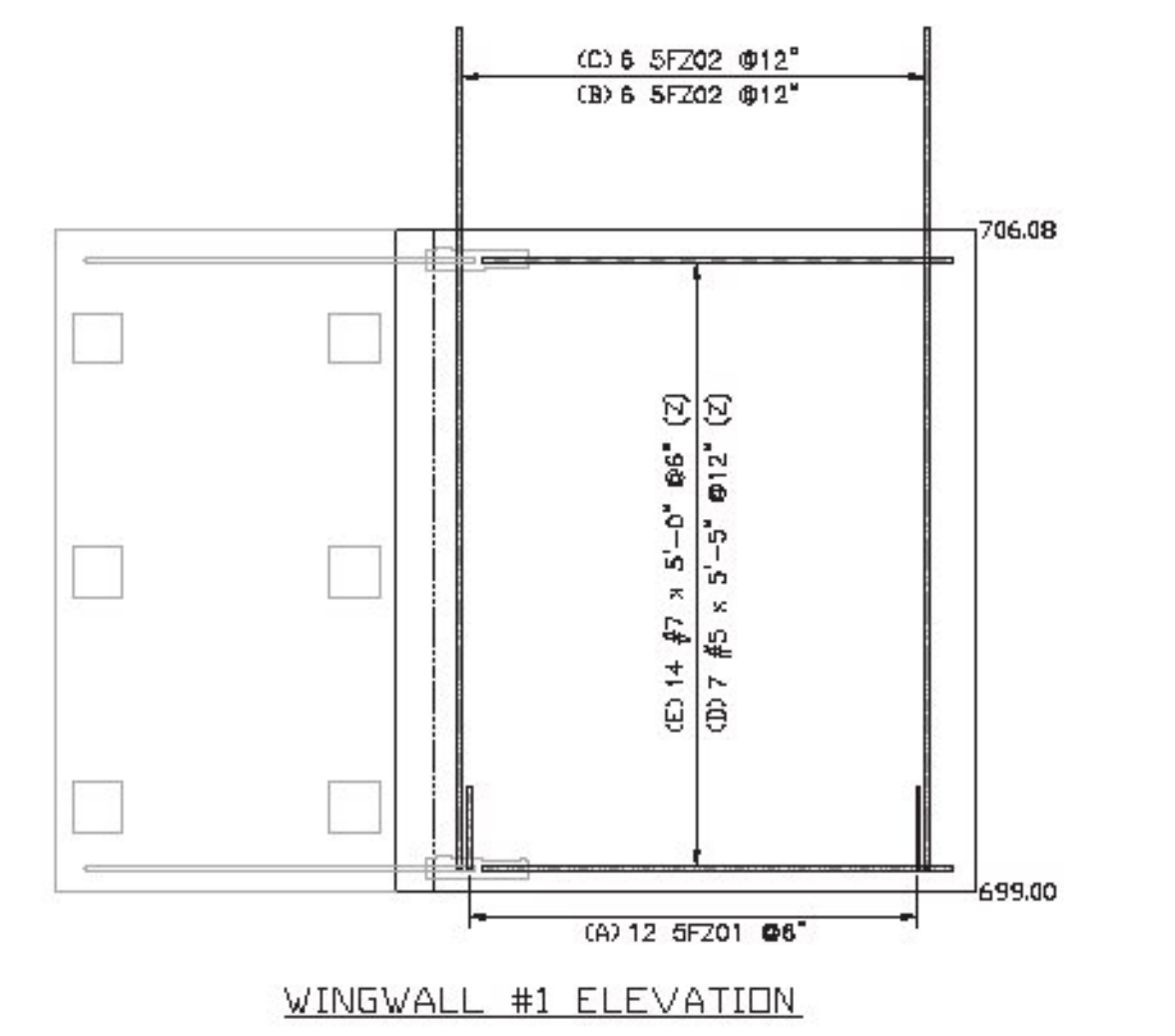
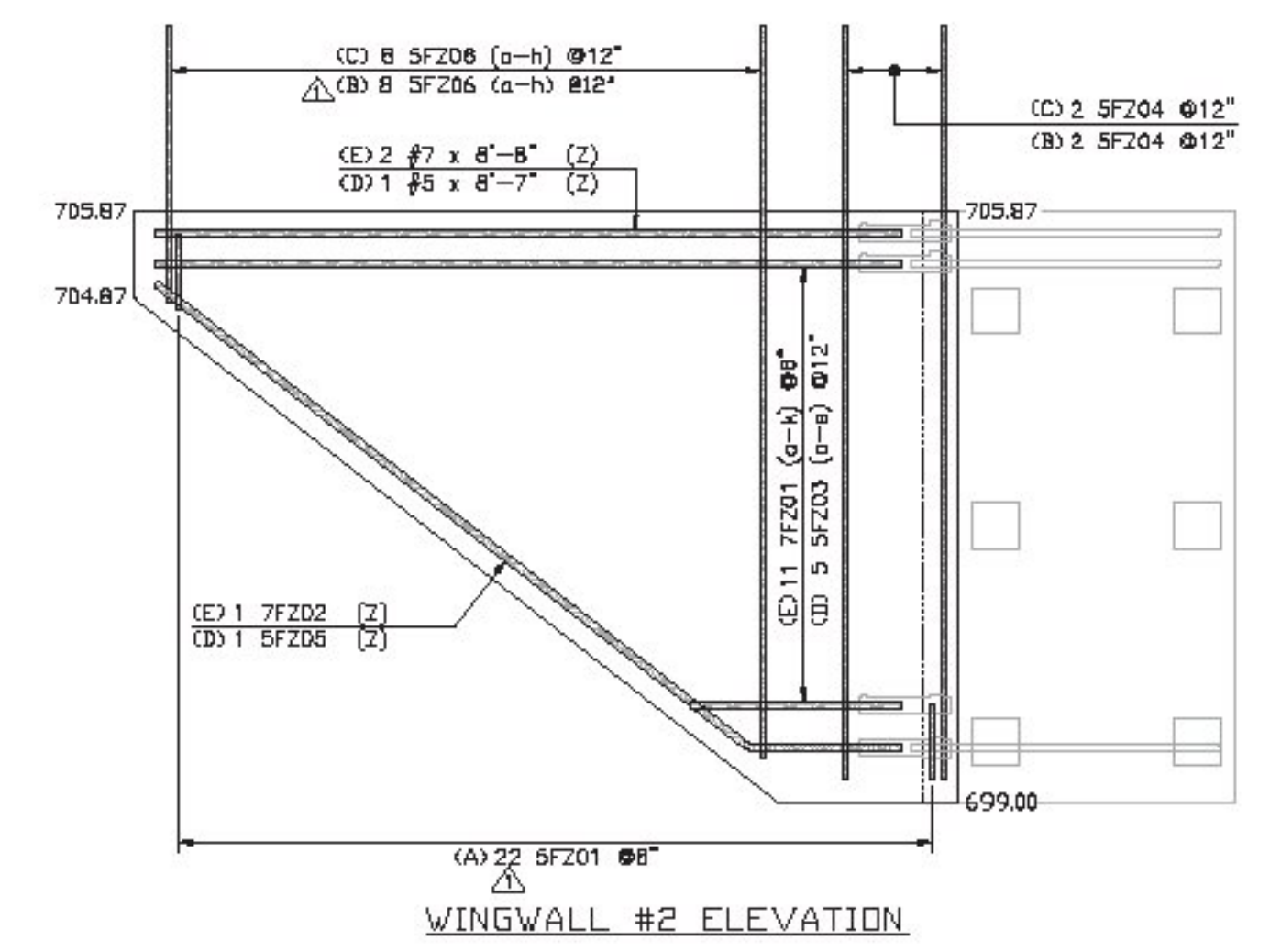
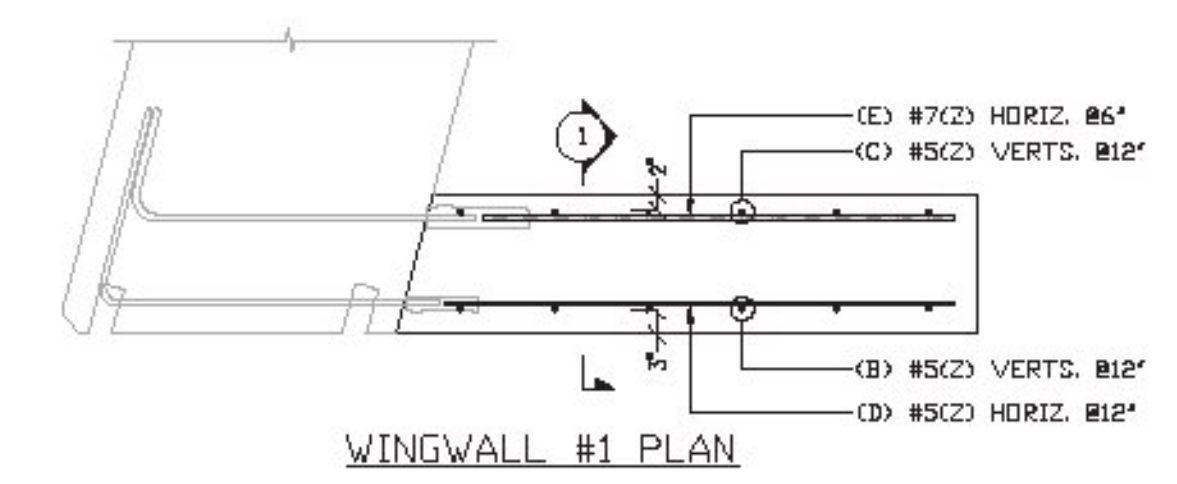
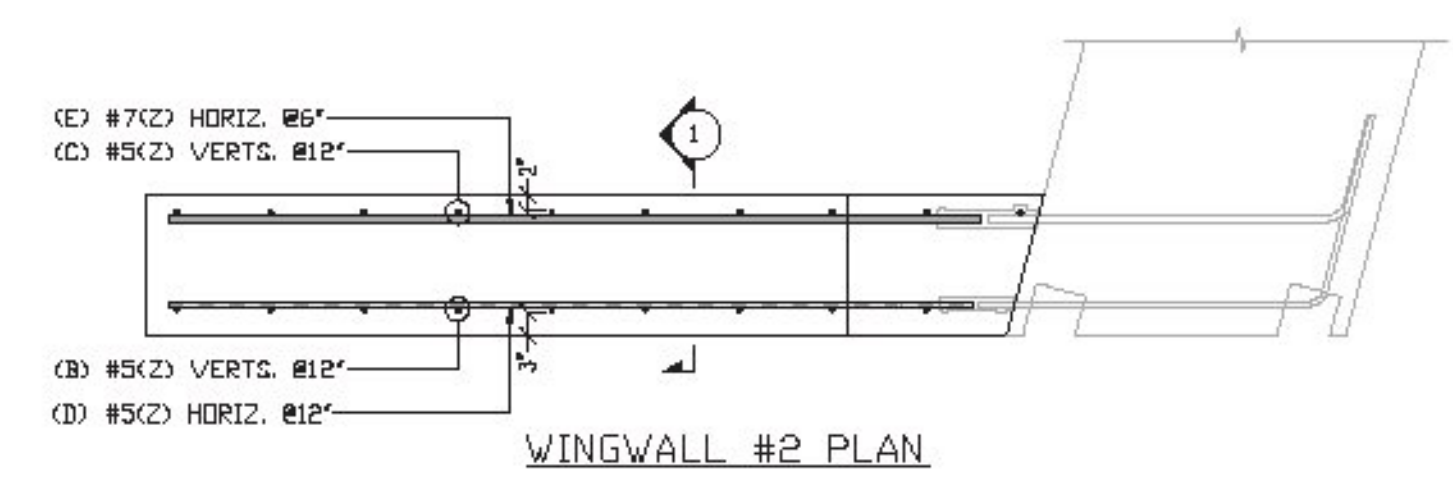


Release Number:		BAR LIST															
Bar Mark	Qty	Size	Total Length	Type	A'	B'	C'	D'	E'	F'	G'	H'	I'	J'	K'	L'	
	7	#5	5'-5"			5'-5"											
	1	#5	8'-7"			8'-7"											
5F201	34	#5	2'-0"	T11	0'-5 1/2"	1'-1"			0'-5 1/2"								
5F202	12	#5	9'-5 1/2"	21			9'-0"	0'-5 1/2"		0'-4"				0'-3 1/2"			
5F203a	1	#5	2'-8"			2'-8"											
5F203b	1	#5	3'-11"			3'-11"											
5F203c	1	#5	5'-3"			5'-3"											
5F203d	1	#5	6'-6"			6'-6"											
5F203e	1	#5	7'-10"			7'-10"											
5F204	4	#5	9'-3 1/2"	21			8'-10"	0'-5 1/2"		0'-4"				0'-3 1/2"			
5F205	1	#5	10'-7"	3			9'-2"	1'-5"		0'-10 1/2"				1'-1 1/2"		10'-3 1/2"	
5F206a	2	#5	3'-9 1/2"	21			3'-4"	0'-5 1/2"		0'-4"				0'-3 1/2"			
5F206b	2	#5	4'-5 1/2"	21			4'-0"	0'-5 1/2"		0'-4"				0'-3 1/2"			
5F206c	2	#5	5'-1 1/2"	21			4'-8"	0'-5 1/2"		0'-4"				0'-3 1/2"			
5F206d	2	#5	5'-9 1/2"	21			5'-4"	0'-5 1/2"		0'-4"				0'-3 1/2"			
5F206e	2	#5	6'-5 1/2"	21			6'-0"	0'-5 1/2"		0'-4"				0'-3 1/2"			
5F206f	2	#5	7'-1 1/2"	21			6'-8"	0'-5 1/2"		0'-4"				0'-3 1/2"			
5F206g	2	#5	7'-9 1/2"	21			7'-4"	0'-5 1/2"		0'-4"				0'-3 1/2"			
5F206h	2	#5	8'-5 1/2"	21			8'-0"	0'-5 1/2"		0'-4"				0'-3 1/2"			
	14	#7	5'-0"			5'-0"											
	2	#7	8'-8"			8'-8"											
7F201a	1	#7	2'-0"			2'-0"											
7F201b	1	#7	2'-7"			2'-7"											
7F201c	1	#7	3'-3"			3'-3"											
7F201d	1	#7	3'-10"			3'-10"											
7F201e	1	#7	4'-6"			4'-6"											
7F201f	1	#7	5'-2"			5'-2"											
7F201g	1	#7	5'-9"			5'-9"											
7F201h	1	#7	6'-5"			6'-5"											
7F201i	1	#7	7'-0"			7'-0"											
7F201j	1	#7	7'-8"			7'-8"											
7F201k	1	#7	8'-4"			8'-4"											
7F202	1	#7	10'-8"	3			9'-5"	1'-3"						0'-9 1/2"		0'-11 1/2"	10'-4 1/2"



△ BAR MARKS MAY CHANGE DUE TO REVISIONS

△ (Z) 5'-0" LONG SAMPLE BARS WILL BE PROVIDED FOR EACH BAR SIZE



**REVISIONS**

**LEGEND:**  
 CONT.-CONTINUOUS  
 TRANS.-TRANSVERSE  
 DWLS.-DOWELS  
 VERTS.-VERTICAL  
 HORIZ.-HORIZONTAL  
 T&B -TOP & BOTTOM  
 I.F.-INNER FACE  
 O.F.-OUTER FACE  
 E.E.-EACH END  
 E.F.-EACH FACE  
 F.F.-FRONT FACE  
 R.F.-REAR FACE  
 E.W.-EACH WAY  
 L.W.-LONG WAY  
 S.W.-SHORT WAY

**ALL DUAL COATED REINF. DENOTED (Z)**

ELEVATIONS & DIMENSIONS SHOWN ON THIS DWG. ARE FOR REINF. DETAILING PURPOSES ONLY AND ARE NOT INTENDED FOR CONSTRUCTION.

REINF. BARS ASTM A615 GRADE 60 DUAL COATED

VERIFICATION OF UNCLEAR INFORMATION MAY BE REQUESTED ON THIS DRAWING. SHOULD VERIFICATION BE LEFT UN-ADDRESSED IT WILL REMAIN AS SHOWN AND ASSUME TO BE CORRECT.

NO.	DATE	REVISED BY	FOR APPROVAL
2	01-12-15	△	REVISED/SD COM FOR APPROVAL
1	12-05-14		FOR APPROVAL

DATE: 12/5/14  
 SHEET NO: 9117  
 PROJECT: VTADT STOWE BRG 0235(11)  
 CONTRACTOR: SD IRELAND CONCRETE CONST. CORP.  
 DRAWING NO: 9117  
 SHEET NO: 12/5/14  
 SHEET OF: 9117  
 DRAWN BY: ED  
 CHECKED BY: F

Vermont Agency of Transportation  
**RECEIVED**  
 CK'D BY CLB OK'D BY DRP  
 January 13, 2015  
 RESUBMIT NO Approved  
 BY C. CARSLON DATE 01/15/15