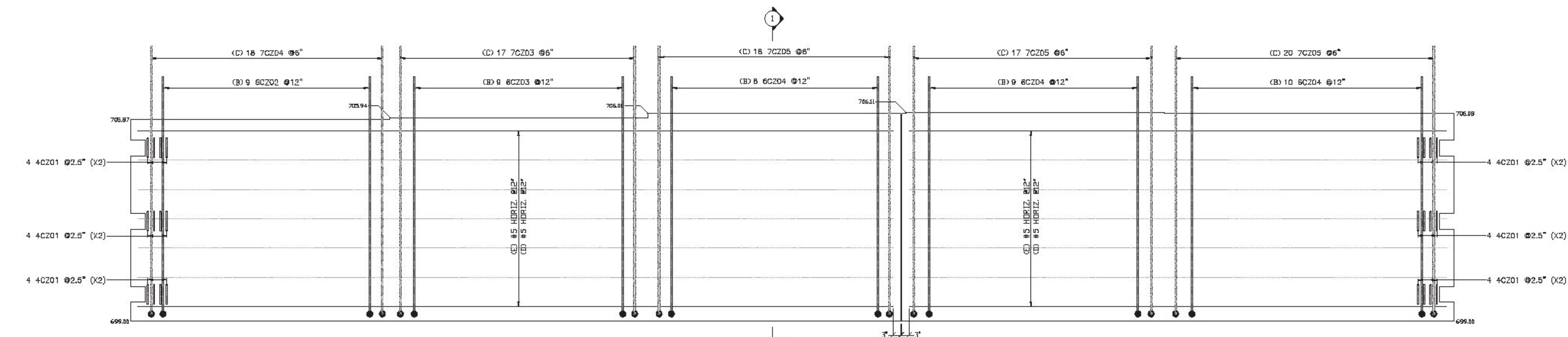
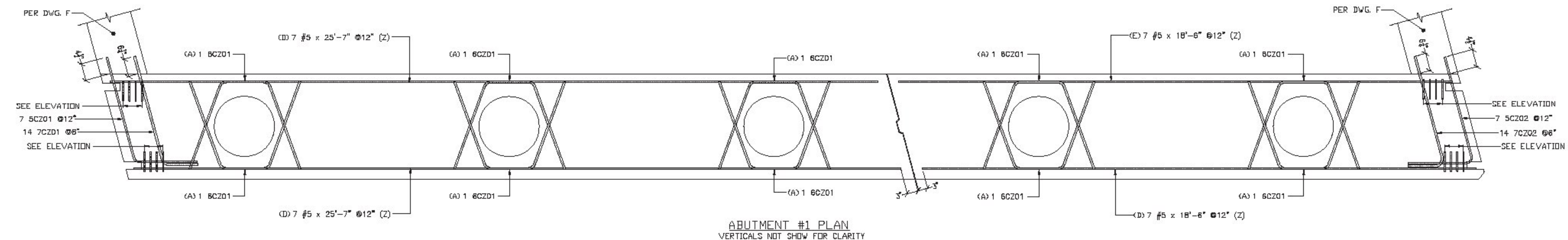


The vertical bars coming out of the abutments will either be spaced to avoid interference with the girders or cut where they interfere.



(2) 5'-0" LONG SAMPLE BARS WILL BE PROVIDED FOR EACH BAR SIZE

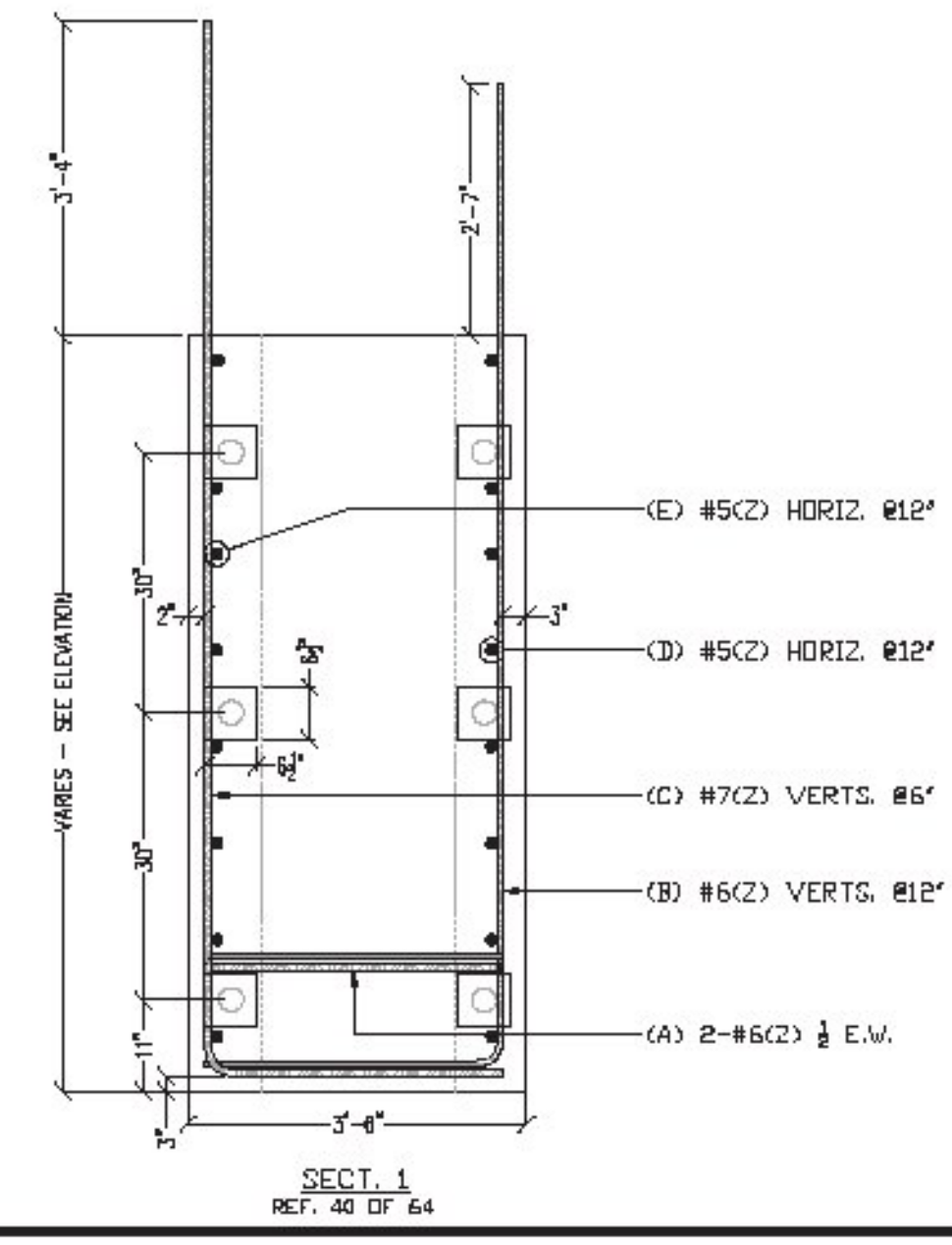
ALL DUAL COATED REINF. DENOTED (Z)

FOR APPROVAL

ELEVATIONS & DIMENSIONS SHOWN ON THIS DWG. ARE FOR REIN. DETAILING PURPOSES ONLY AND ARE NOT INTENDED FOR CONSTRUCTION.

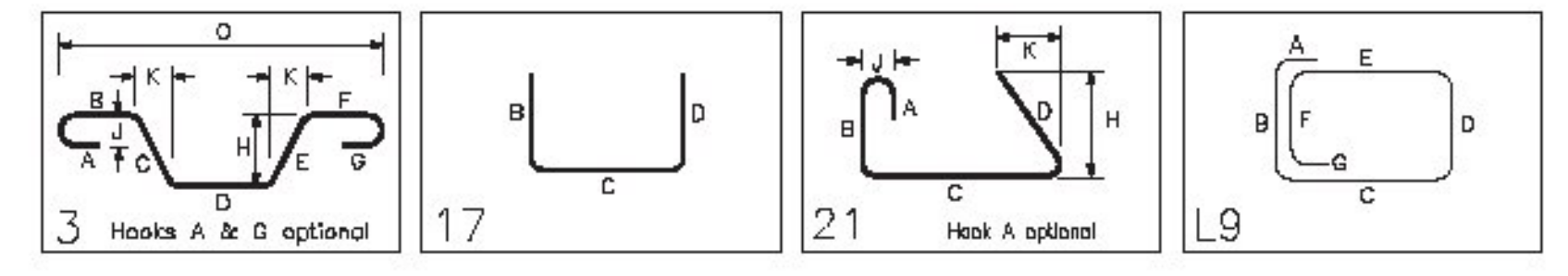
REINF. BARS ASTM A615 GRADE 60 DUAL COATED

VERIFICATION OF UNCLEAR INFORMATION MAY BE REQUESTED ON THIS DRAWING. SHOULD VERIFICATION BE LEFT UN-ADDRESSED IT WILL REMAIN AS SHOWN AND ASSUME TO BE CORRECT.



Release Number: D03

Bar Mark	Qty	Size	Total Length	Type	'k'	'g'	'c'	'd'	'e'	'f'	'g'	'h'	'i'	'j'	'k'	'l'
	14	#5	25'-7"			25'-7"										
	14	#5	18'-6"			18'-6"										
4CZ01	48	#4	4'-8"	L9	0'-4 1/2"	0'-8"	0'-8"	0'-8"	0'-8"	0'-8"	0'-4 1/2"					
5CZ01	7	#5	6'-11 1/2"	3		3'-7 1/2"	3'-4"					3'-2 1/2"		0'-10 1/2"	4'-5 1/2"	
5CZ02	7	#5	6'-11 1/2"	21			3'-7 1/2"	3'-4"				3'-2 1/2"		0'-10 1/2"		
6CZ01	10	#6	7'-9 1/2"	3			3'-1 1/2"	1'-7"	3'-1 1/2"			2'-11"		1'-0 1/2"	3'-9 1/2"	
6CZ02	9	#6	12'-3"	17			3'-1"	9'-2"								
6CZ03	9	#6	12'-4"	17			3'-1"	9'-3"								
6CZ04	27	#6	12'-6"	17			3'-1"	9'-5"								
7CZ01	14	#7	4'-11 1/2"	3			3'-9 1/2"	1'-2"				1'-1 1/2"		0'-3 1/2"	4'-0 1/2"	
7CZ02	14	#7	4'-11 1/2"	21				3'-9 1/2"	1'-2 1/2"			1'-2 1/2"		0'-2 1/2"		
7CZ03	17	#7	13'-1"	17			3'-1"	10'-0"								
7CZ04	18	#7	12'-11"	17			3'-1"	9'-10"								
7CZ05	55	#7	13'-3"	17			3'-1"	10'-2"								



Vermont Agency of Transportation
RECEIVED

CK'D BY CLB OK'D BY DRP

January 13, 2015

RESUBMIT NO Approved AsNoted
BY C. CARLSON DATE 01/15/15

NO.	DATE	REV.	BY	FOR APPROVAL
3	01-12-15	1	CLB	REINFORCEMENT BAR DETAILING
2	12-16-14	1	DRP	REINFORCEMENT BAR DETAILING
1	12-10-14	1	DRP	FOR APPROVAL

DATE: 12/3/14 REV: 9117

PROJECT: VTADOT STONE BRIDGE 0235(11)

LOCATION: WILLINGSTON, VT

CONTRACTOR: SD IRELAND CONCRETE CONST. CORP.

DRAWING NO: ABUTMENT #1 DUAL COATED REINFORCING

LEGEND:
CONT.-CONTINUOUS
TRANS.-TRANSVERSE
I.W.L.-IDWELLS
VERTS.-VERTICAL
HORIZ.-HORIZONTAL
T&B -TOP & BOTTOM
I.F.-INNER FACE
O.F.-OUTER FACE
E.E.-EACH END
E.F.-EACH FACE
R.F.-REAR FACE
E.W.-EACH WAY
O.C.-ON CENTER
L.W.-LONG WAY
S.W.-SHORT WAY