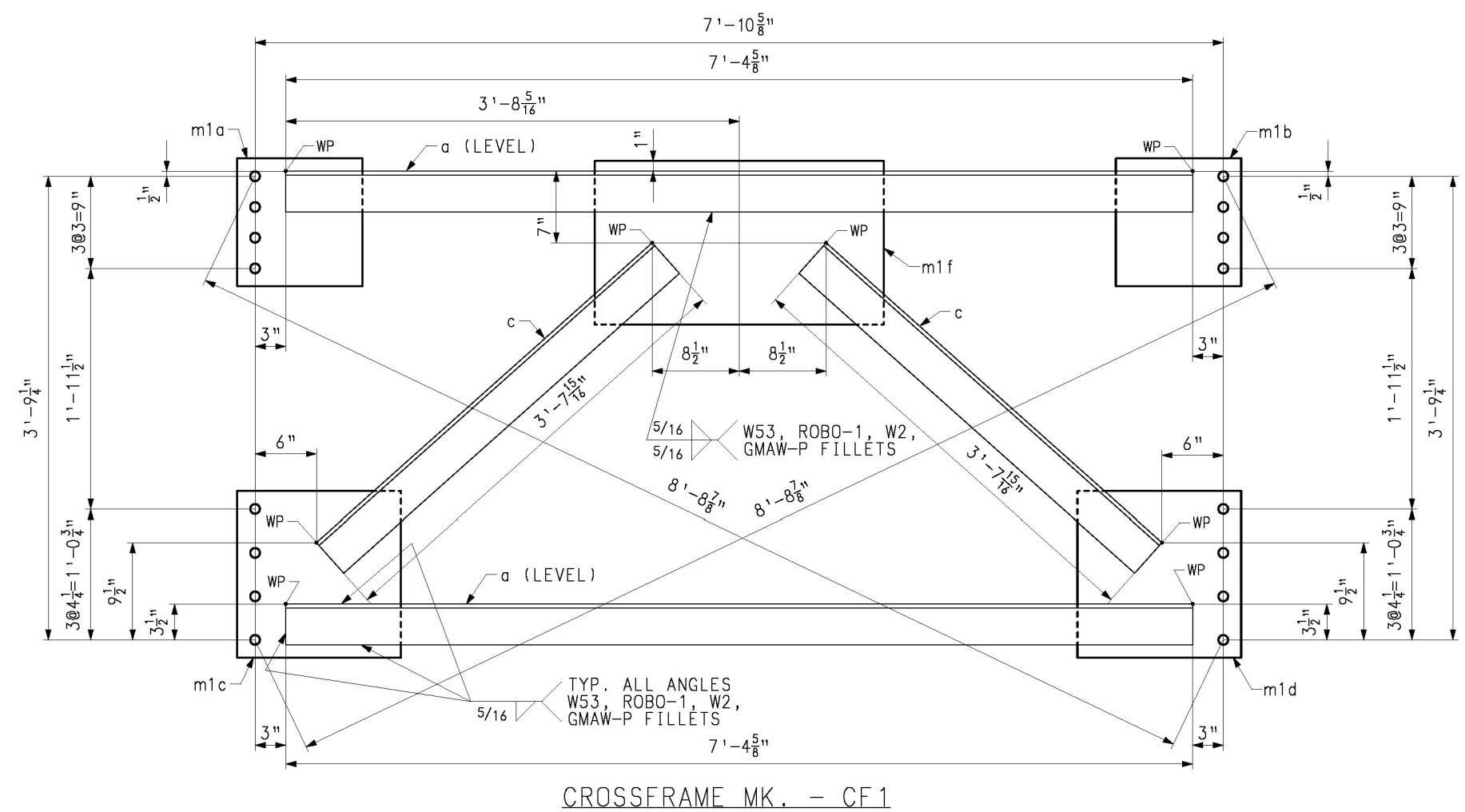
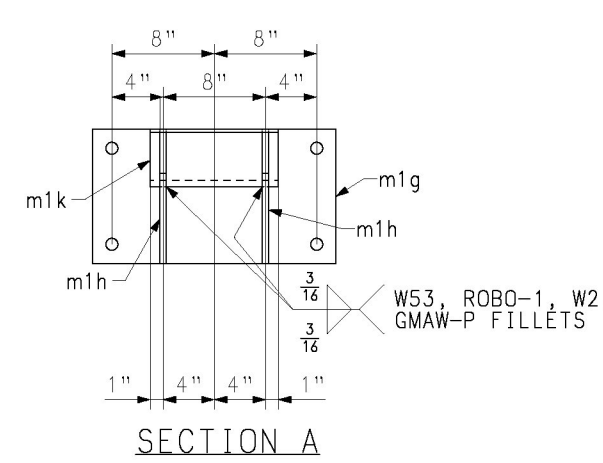


SHIPMENT 1 PAPER01 S03S22Z PFD S03S22Z SHIPMENT1 S03S22Z

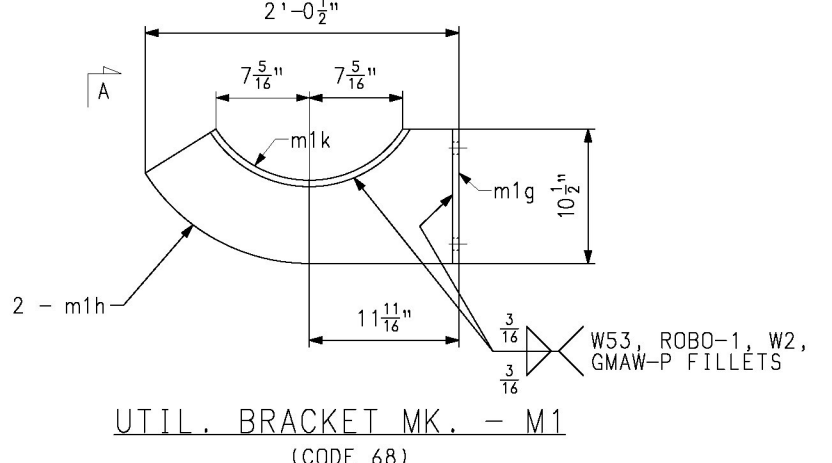
PLOTTED: MM/DD/YY (HH:MM) BY: XXXXXXXX



CROSSFRAME MK. - CF1



SECTION A



UTIL. BRACKET MK. - M1
(CODE 68)

BILL OF MATERIAL										
QTY	MARK	COMM.	DESCRIPTION	LENGTH	SPEC	GRADE	TEST	REMARKS	ITEM	WT. EA. (LBS.)
28	CF1		CROSSFRAMES							396
2	a	L	4 x 4 x 3/8	7	45#	M270	S0W		11001	
2	c	L	4 x 4 x 3/8	3	715/14	M270	S0W		11001	
1	m1a	PL	1/2 x 12 1/2	1	0 1/4	M270	S0W		11002	
1	m1b	PL	1/2 x 12 1/2	1	0 1/4	M270	S0W		11002	
1	m1c	PL	1/2 x 16 1/4	1	4	M270	S0W		11002	
1	m1d	PL	1/2 x 16 1/4	1	4	M270	S0W		11002	
1	m1f	PL	1/2 x 16	2	4 1/4	M270	S0W		11002	

BILL OF MATERIAL										
QTY	MARK	COMM.	DESCRIPTION	LENGTH	SPEC	GRADE	TEST	REMARKS	ITEM	WEIGHT EA. (LBS.)
14	M1		UTILITY ASSEMBLY							126
1	m1g	PL	1/2 x 10 1/2	1	7	M270	S0W		15001	
2	m1h	PL	1/2 x 10 1/2	2	0	M270	S0W		15001	
1	m1k	PL	1/2 x 10	1	6 11/16	M270	S0W		15001	

Vermont Agency of Transportation
RECEIVED

CK'D BY CLB OK'D BY DRP

January 23, 2015

RESUBMIT NO Approved
BY C. CARLSON DATE 01/23/15

NO.	REVISION	BY	CHK'D	DATE
DETAIL ERROR: REV. CF. WEIGHT. MJD MGK 1/12/15				
CROSSFRAME CF1 & MISCELLANEOUS PART M1				
VT RT 108 OVER LITTLE RIVER				
VT RT 108 STA. 3+48.00 TO STA. 4+76.00				
TOWN OF STOWE, LAMOLLE COUNTY, VERMONT				
STATE OF VERMONT				
AGENCY OF TRANSPORTATION				
SCALE	STATE CONT. BR. REF. NO.	BRF 0235 1111	FED. AID PROJ. NO.	
	GENERAL CONTRACTOR	CCS CONSTRUCTORS LLC	DESIGNER	MEN GLIDDEN
DRAWING MANAGER	DAVE PAINTER (JH)	MADE BY	MAF	CHK'D BY
TEST PROJECT NUMBER	S-1140 166A-1	DATE	11/18/14	6 OF 6

FOR GENERAL SHDP NOTES, SEE DRAWING GN1.