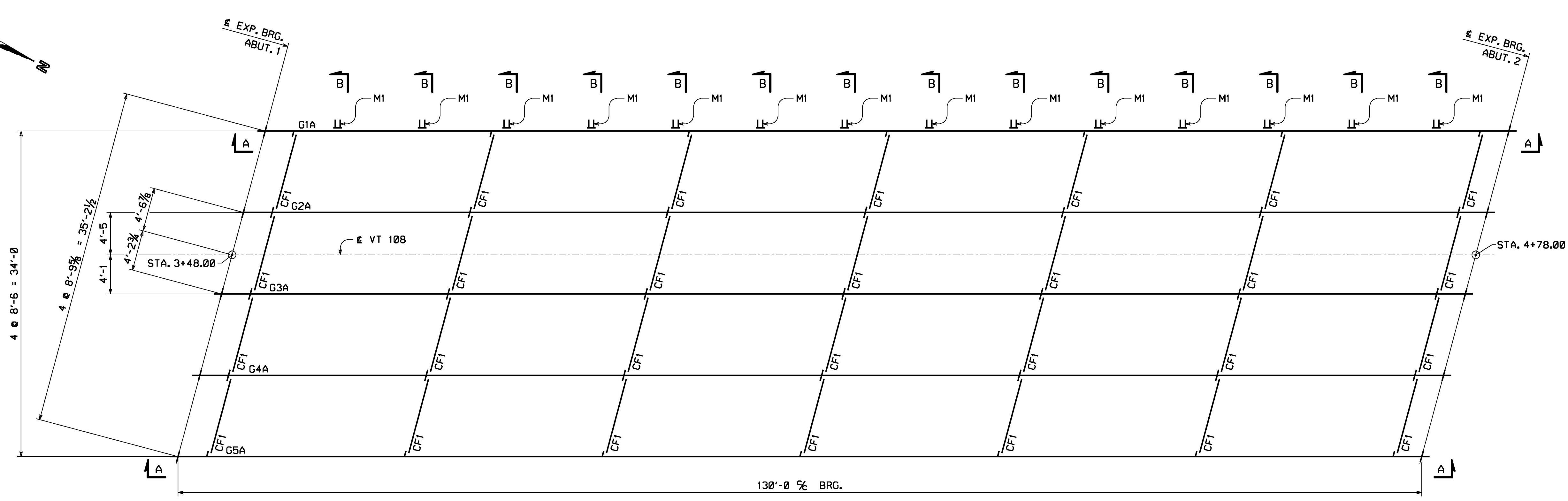


ENGLISH  
SHIPMENT 01  
BY: mkr-ede1  
PLOTTED: 1/13/2015 7:01:27 AM

SHIPPING GROUP A1		SHIPPING PIECES		
SHIPPING PIECE MARK	QUANTITY	SHIPPING PIECE MARK	WEIGHT EA. (LBS)	DWG NO.
G1A	1	G1A	39,331	1
G2A	1	G2A	39,703	2
G3A	1	G3A	39,703	3
G4A	1	G4A	39,703	4
G5A	1	G5A	39,331	5
CF1	28	CF1	396	6
M1	14	M1	126	6



ERECTOR FRAMING PLAN

FIELD BOLT SUMMARY - SHIP. #1	
(2% ADDITIONAL BOLTS ADDED + 3 EA. FOR TESTING)	
ASTM A325 TYPE 3 (RCT); W/HVY HEX HD	
517	- 7/8" HIGH STRENGTH BOLTS x 0'-2 3/4"
ASTM A563 GRADE DH3 (RCT); HVY HEX	
517	- NUTS FOR 7/8" BOLT
ASTM F436 TYPE 3 (RCT); ROUND & FLAT	
517	- STD WASHERS FOR 7/8" BOLT
ASTM F959-3 DTI WASHERS	
517	- DTI WASHERS FOR 7/8" BOLT

**Vermont Agency of Transportation**  
RECEIVED  
Structural Steel Approved 1.13.15.pdf  
 CK'D BY CLB OK'D BY DRP  
**January 23, 2015**  
 RESUBMIT NO Approved  
 BY C. CARLSON DATE 01/23/15

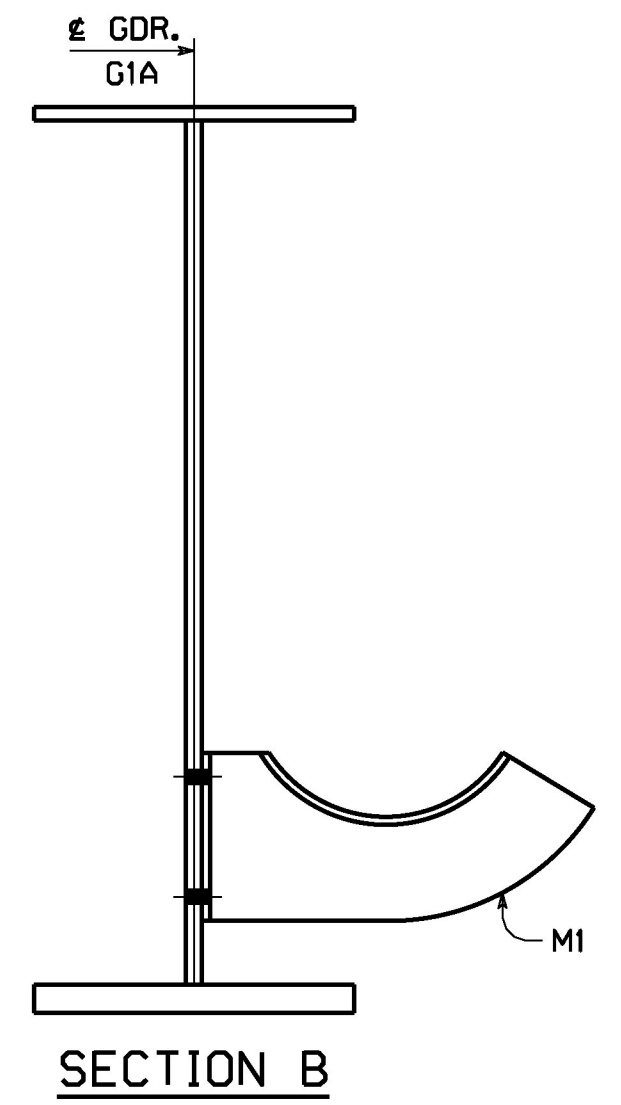
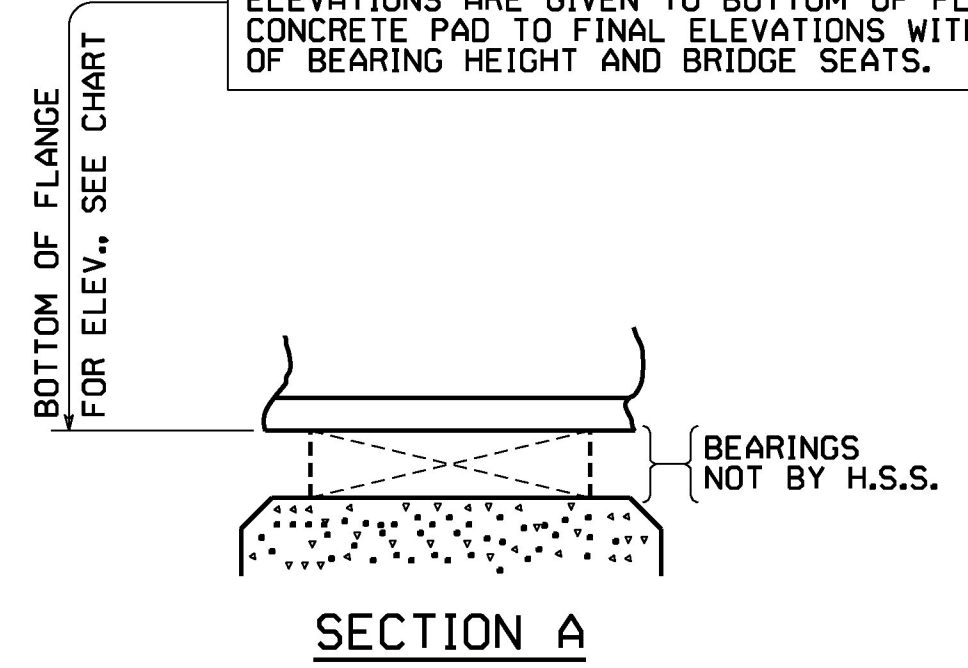
LIST OF FIELD CONNECTIONS										ONE WASHER PER BOLT UNLESS NOTED OTHERWISE
LINE	ACTUAL NUMBER REQ'D	BOLT DIAM.	BOLT LENGTH	BOLTS PER CONN.	NO. OF CONN.	GRIP	THICKNESS OF PIECES JOINED			PIECES CONNECTED AND REMARKS
1	448	7/8	2 3/4	8	56	1 3/16	1/2	1/2	3/16	CF. GUSS. PL. TO CONN. PL.
2	56	7/8	2 3/4	4	14	1 5/16	1/2	5/8	3/16	UTILITY BRACKET M1 TO G1A GDR. WEB

**NOTES:**  
 NO CREDIT WILL BE ALLOWED FOR WORK PERFORMED BY OTHERS IN REPLACING OR CORRECTING MATERIALS OR WORKMANSHIP COVERED BY THIS DRAWING UNLESS EXPRESSLY AUTHORIZED BY HIGH STEEL STRUCTURES, INC. HIGH STEEL STRUCTURES, INC. DOES NOT SUPPLY STUD SHEAR CONNECTORS, ROD HANGERS, EXPANSION DAM MATERIAL, BEARINGS, BEARING PADS, OR ANCHOR BOLTS. NOTICE: WEIGHTS OF MEMBERS LISTED ON THESE DRAWINGS ARE ESTIMATED WEIGHTS AND ACTUAL WEIGHTS WILL VARY. HIGH STEEL STRUCTURES, INC. WILL NOT BE RESPONSIBLE FOR ANY ERECTION PROCEDURES, SHIPPING PROCEDURES, ETC. DEVELOPED USING ESTIMATED WEIGHTS AS SHOWN. ALL DIMENSIONS ARE GIVEN HORIZONTALLY (U.N.).  
**ERECTOR NOTE:** ALL BOLTS MUST BE LOCATED IN ACCORDANCE WITH THE LIST OF FIELD CONNECTIONS. HIGH STEEL STRUCTURES WILL NOT BE RESPONSIBLE FOR FURNISHING ADDITIONAL BOLTS OR FOR ANY OTHER RELATED COSTS OR DAMAGES RESULTING FROM IMPROPER LOCATION OF BOLTS. ALL FIELD BOLTS THRU WEB OF FASCIA GIRDERS ARE TO HAVE HEADS ON OUTSIDE OF WEB.  
 (RCT) INDICATES ROTATIONAL CAPACITY TESTED BOLTS. DO NOT MIX NUTS, BOLTS AND WASHERS FROM DIFFERENT CONTAINERS UNLESS ALL NUTS, BOLTS AND WASHERS HAVE THE SAME LOT NUMBER.

ALL BOLTED CONNECTIONS REQUIRE DTI WASHERS.

**CONTRACTOR NOTE:**  
 ELEVATIONS ARE GIVEN TO BOTTOM OF FLANGE - DO NOT POUR CONCRETE PAD TO FINAL ELEVATIONS WITHOUT VERIFICATION OF BEARING HEIGHT AND BRIDGE SEATS.

ELEVATIONS AT BEARING POINTS (In Feet)		
LINE NO.	BOTTOM OF BOT. FLG. ELEV.	
	ABUT. 1	ABUT. 2
G1	706.29	708.89
G2	706.32	708.92
G3	706.29	708.89
G4	706.15	708.75
G5	706.08	708.68



NO.	REVISION	BY	CHK'D	DATE
1	DETAIL ERROR: ADDED DTI WASHERS & NOTE AND REV. BOLT LENGTH.	MJD	MKG	1/12/15

HOLES				
BOLTS				
COATING	ERECTOR FRAMING PLAN VT RT 108 OVER LITTLE RIVER VT RT 108 STA. 3+48.00 TO STA. 4+78.00 TOWN OF STOWE, LAMOILLE COUNTY, VERMONT STATE OF VERMONT AGENCY OF TRANSPORTATION			
SCALE	STATE CONT. OR REF. NO. BRF 0235 (11)	FED. AID PROJ. NO.		
N.T.S.	GENERAL CONTRACTOR CCS CONSTRUCTORS LLC	HSSL PROJ. MGR	KEN GLIDDEN	
DRAWING MANAGER	DAVE PAINTER (IH)	MADE BY	CHK'D BY	MKG
HSSL PROJECT NUMBER	S-1140166A-1	DRAWING NUMBER	E1 OF E2	