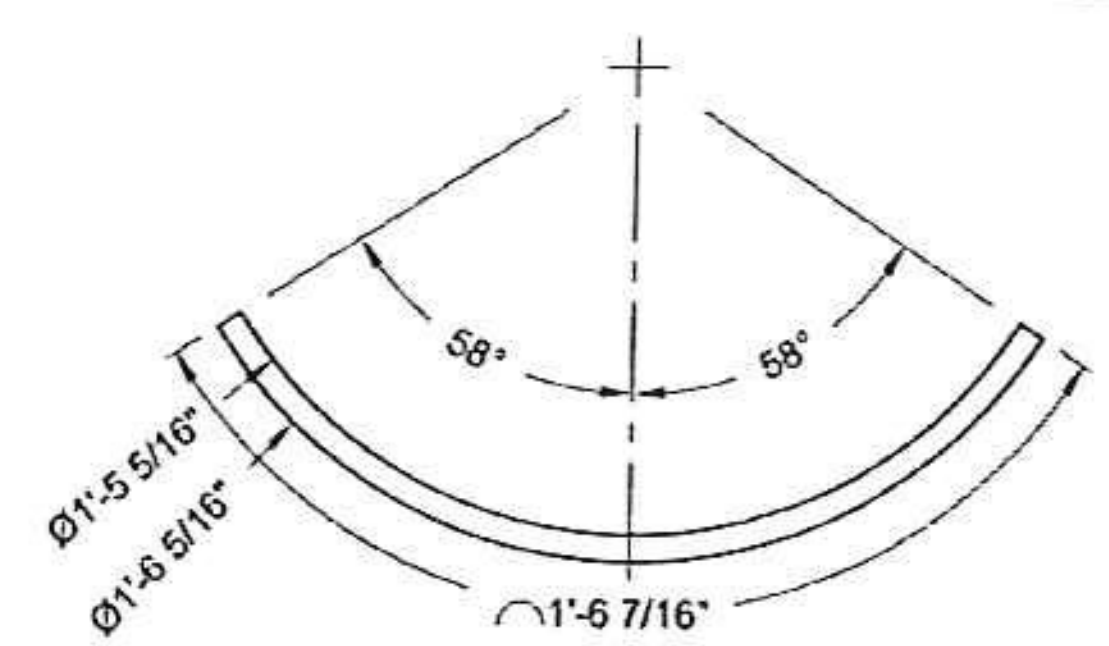
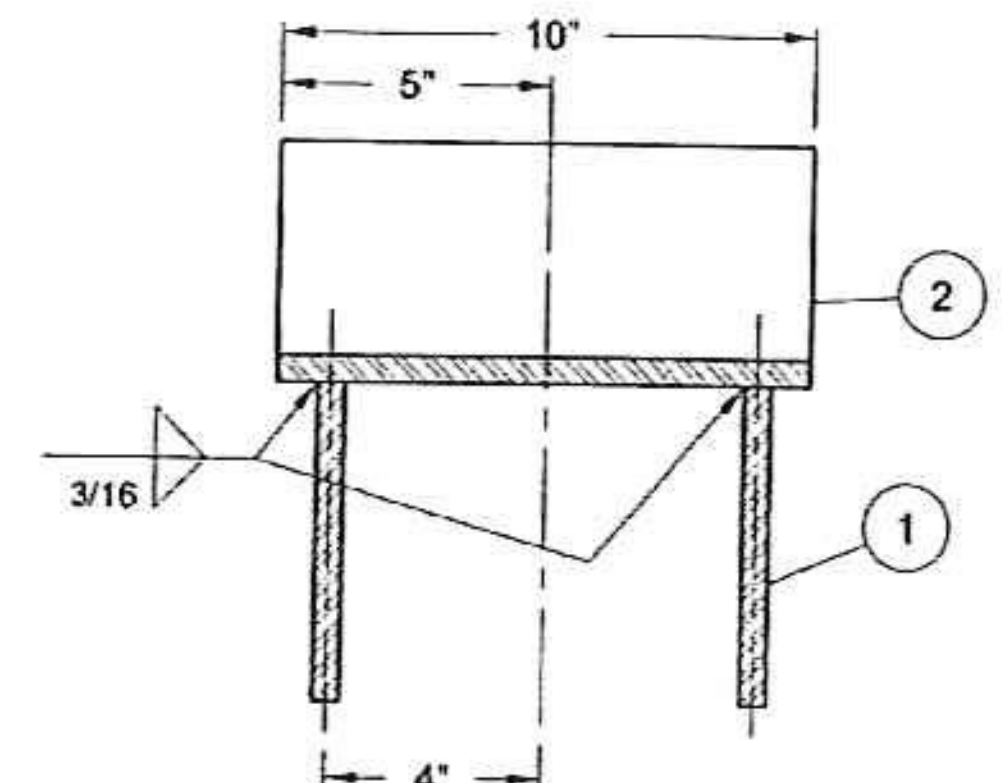


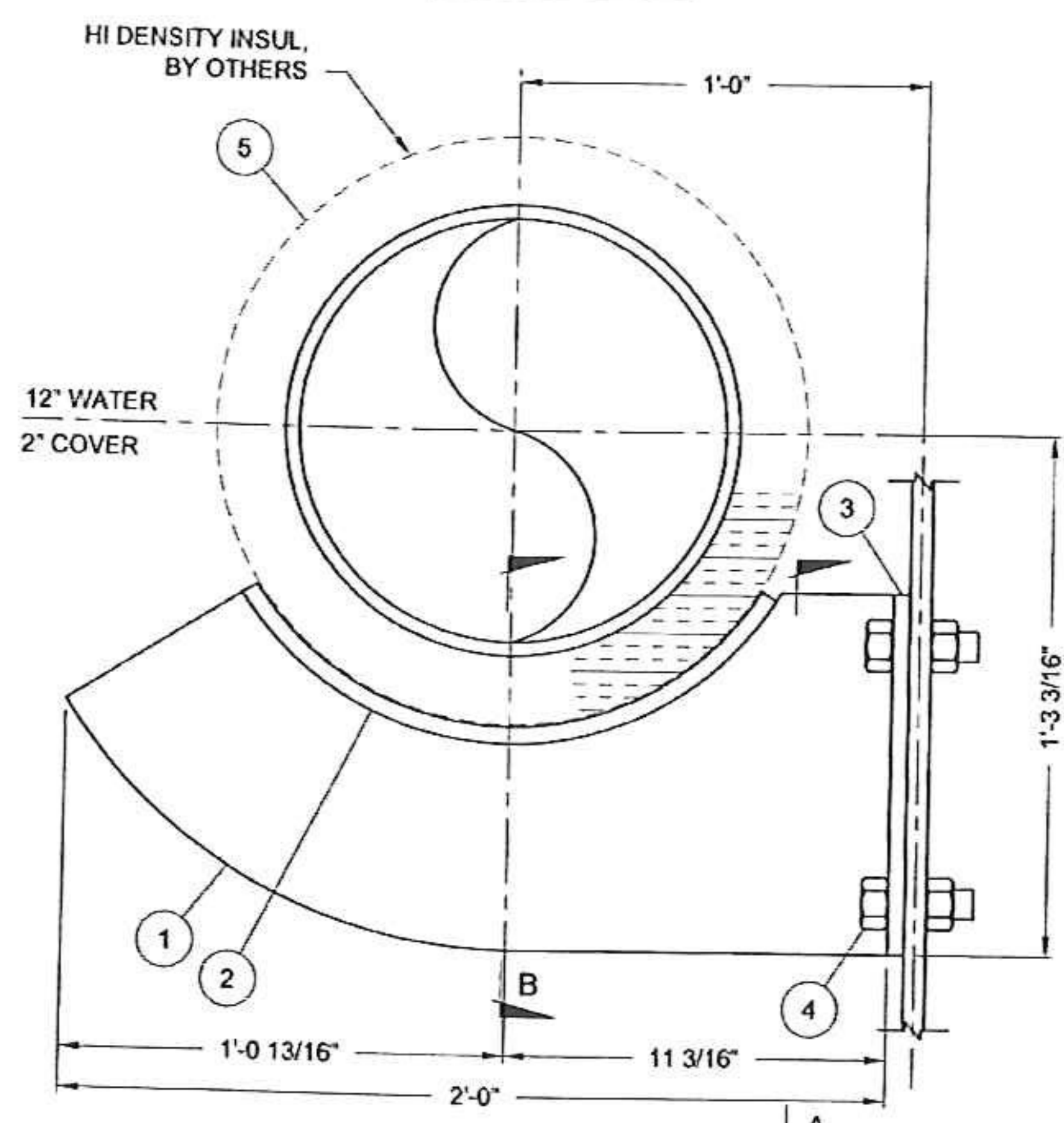
DETAIL ITEM 1



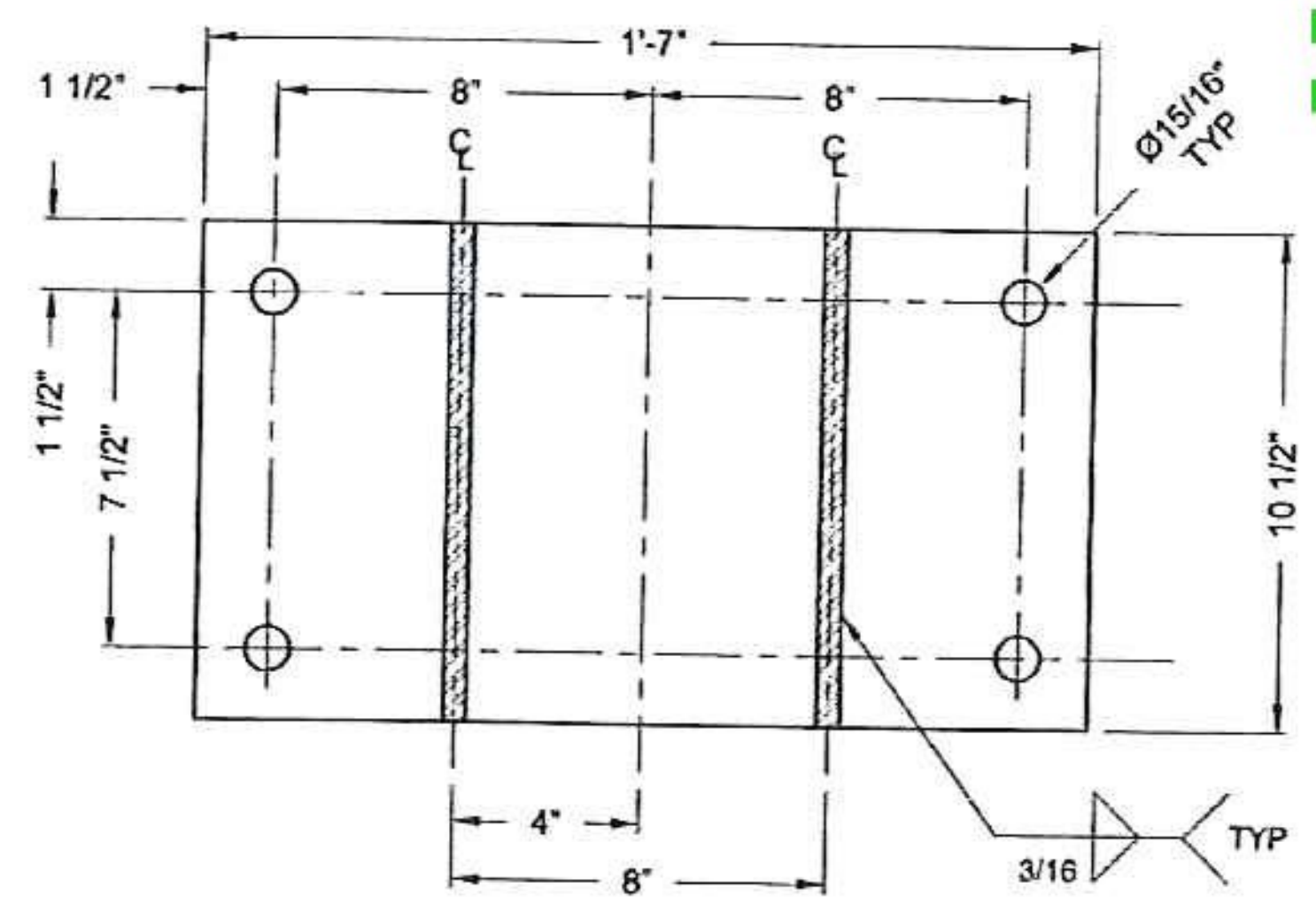
DETAIL ITEM 2



SECTION B-B



ELEVATION



SECTION A-A

ITEM NO.	QTY.	FD NO.	DESCRIPTION	FIN.	MATL.
1	2	---	PL 1/2", AS SHOWN	G	A36
2	1	---	PL 1/2", ROLLED AS SHOWN, WIDTH=10"	G	A36
3	1	---	PL 1/2", AS SHOWN	G	A36
4	4	---	Ø7/8" x 1 1/2" LG. BOLT & HEX NUT, A325 - TYPE 3	--	A325
5	1	170	SIZE 21B, 360° INSUL. SHIELD, SS STRAPS BY OTHERS	G	CS

PIPE SIZE/SYSTEM:	12" WATER	REFERENCE DRAWINGS:
PIPE MATERIAL:	DI	1.
DEADWEIGHT LOAD (LB), Fy:	---	2.

NOTES:  
 1. WELDING SHALL BE IN ACCORDANCE WITH AWS D1.1  
 G= GALVANIZED  
 P= RED OXIDE  
 B= BLACK

Vermont Agency of Transportation  
**RECEIVED**  
 CK'D BY D. PETERSON OK'D BY C. CARLSON  
 February 20, 2015  
 RESUBMIT NO Approved  
 BY C. CARLSON DATE 03/04/2015

QTY: 14

REV	DATE	DESCRIPTION	BY	CHK	APP
A	2-5-15	FOR APPROVAL	JRK	---	---
NEWMAN ASSOCIATES CANTON, MA					
PIPE SUPPORT					
STOWE VAOT STOWE BR# 0235 (11)					
CUSTOMER	FERGUSON WATERWORKS				
SUPPORT NO.	PS-01		SHT. 1 OF 1		

**FERGUSON**  
 a WOLSELEY company  
 429 Troy Avenue • Colchester, VT 05446  
 Phone: 802-655-3505 • Fax: 802-655-7943  
 www.ferguson.com  
 Nobody expects more from us than we do™