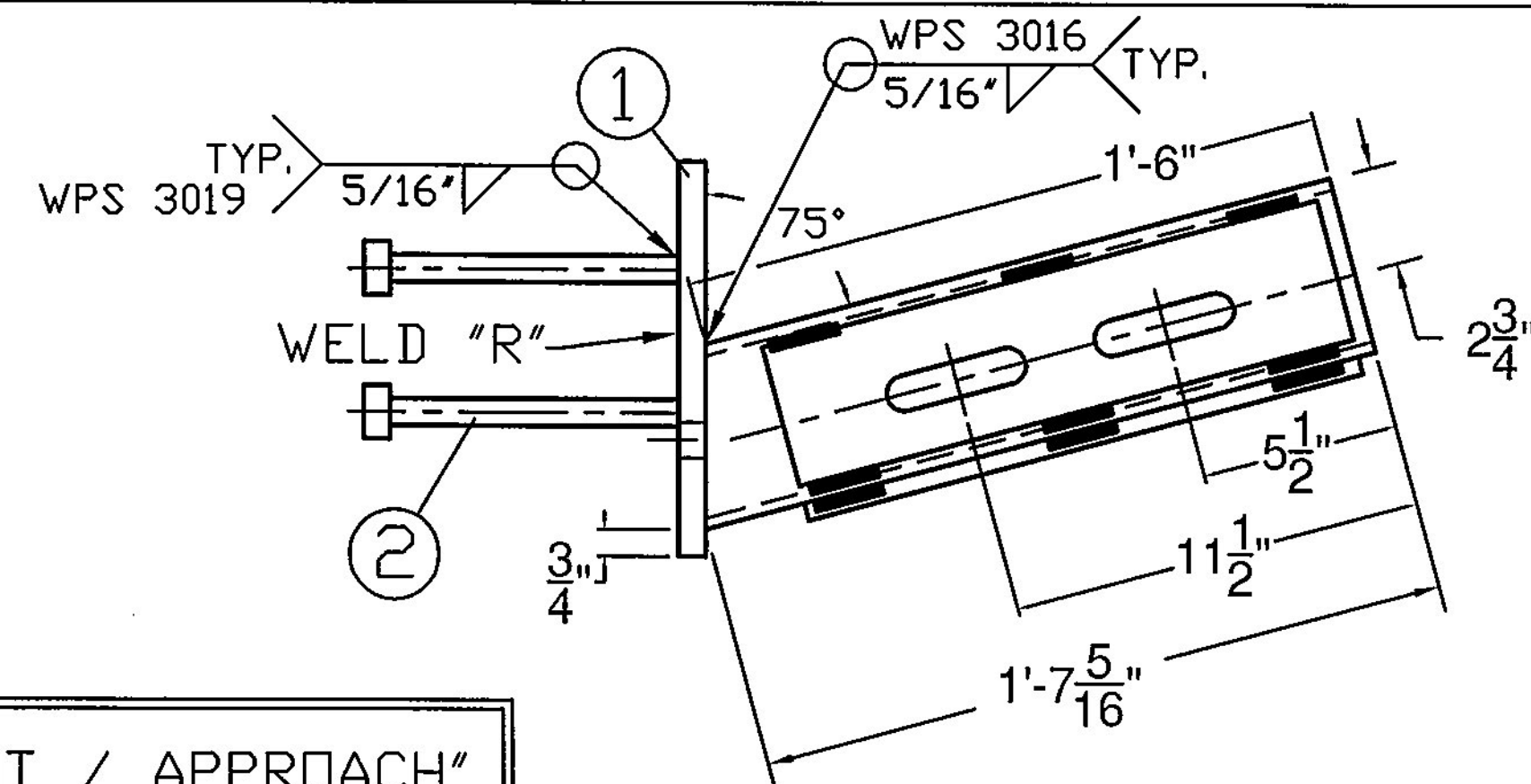
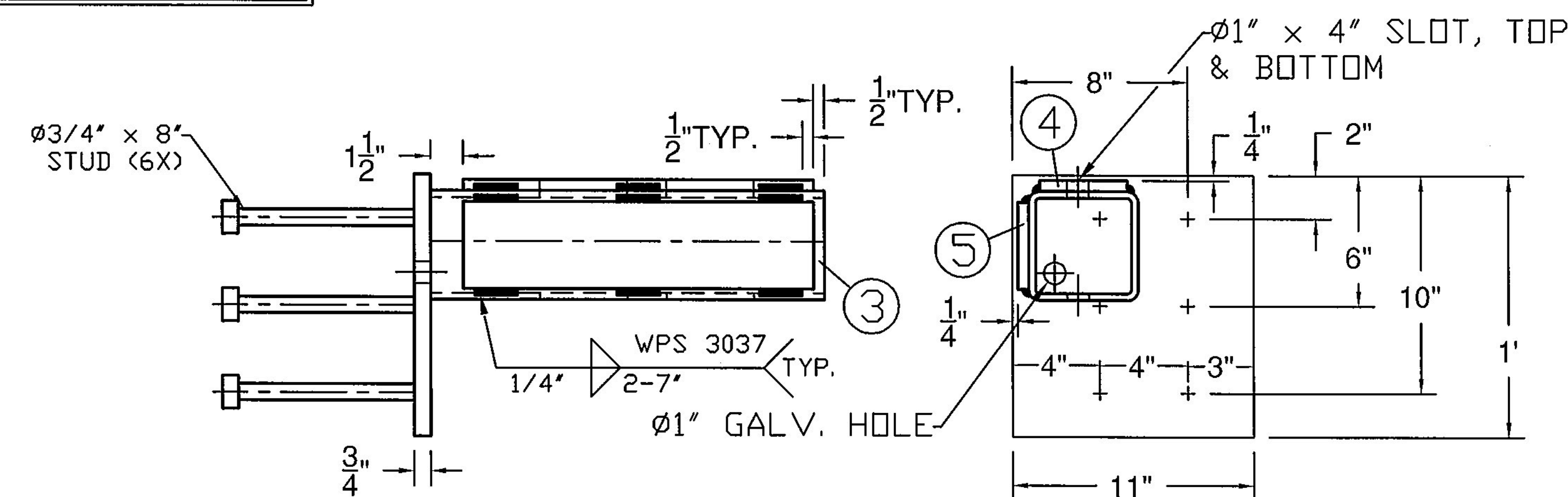


BILL OF MATERIALS

ITEM #	QTY	DESCRIPTION	ASTM #
1	1	TUBE WALL PLATE - 3/4" X 11" X 12"	ASTM A572 Gr. 50
2	6	Ø3/4" X 8" STUD	TO BE PURCHASED
3	1	5" X 5" X 5/16" TUBE W/ SLOTS @ 19 5/16"	ASTM A500 Gr. B
4	1	SHIM PL 1/2" X 4" X 16" W/ SLOTS	ASTM A709 Gr. 36 CVN
5	1	SHIM PL 1/2" X 4" X 16" (W/O SLOTS)	ASTM A709 Gr. 36 CVN



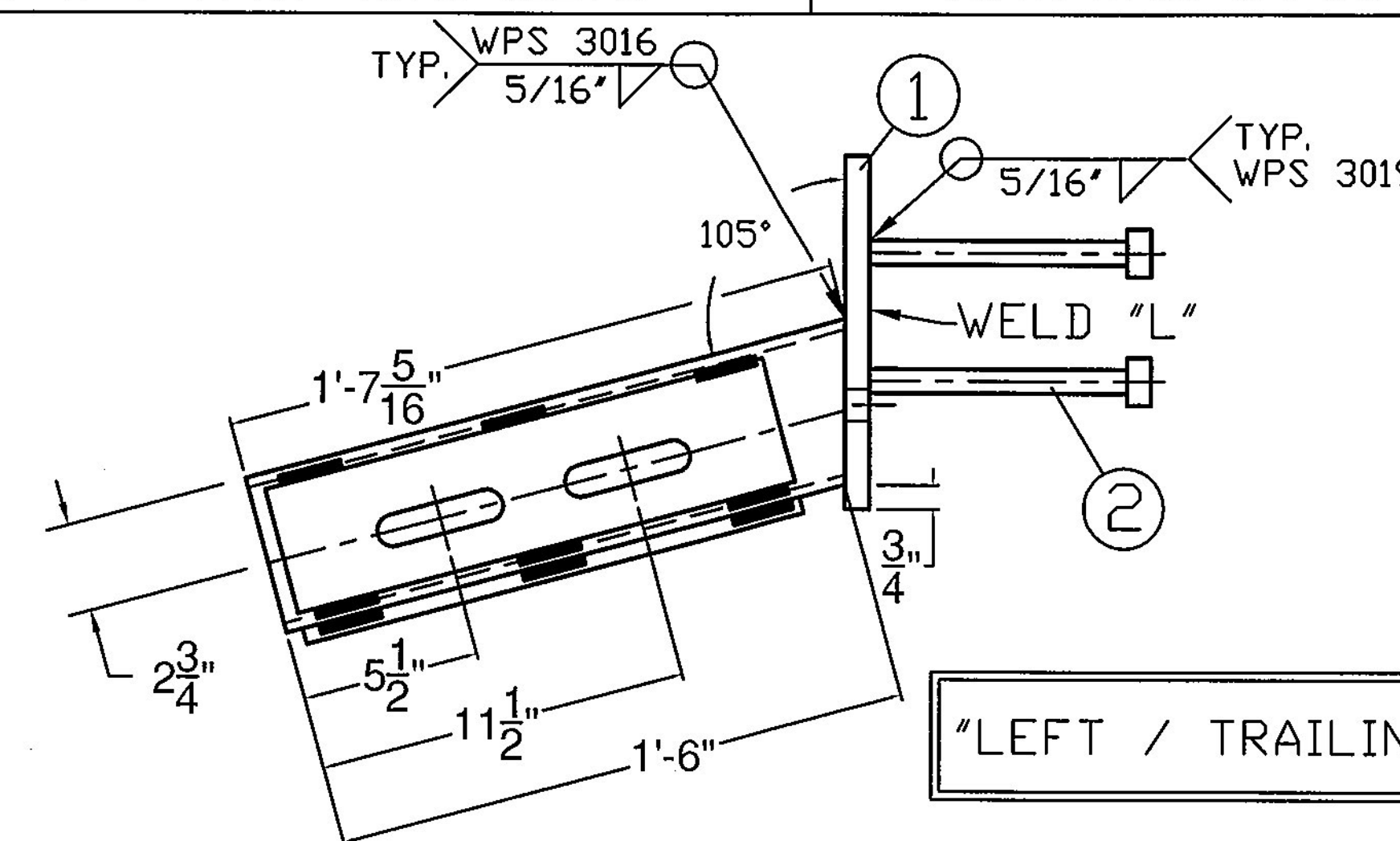
"RIGHT / APPROACH"



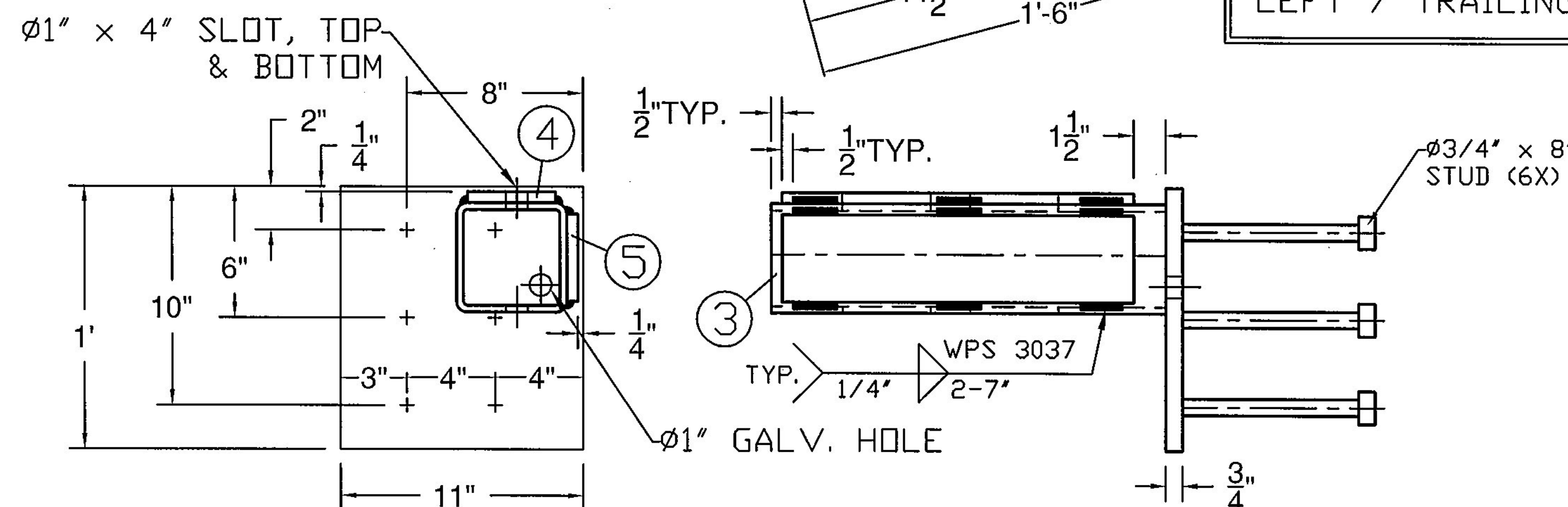
15° SKEW NOT SHOWN IN THESE VIEWS

BILL OF MATERIALS

ITEM #	QTY	DESCRIPTION	ASTM #
1	1	TUBE WALL PLATE - 3/4" X 11" X 12"	ASTM A572 Gr. 50
2	6	Ø3/4" X 8" STUD	TO BE PURCHASED
3	1	5" X 5" X 5/16" TUBE W/ SLOTS @ 19 5/16"	ASTM A500 Gr. B
4	1	SHIM PL 1/2" X 4" X 16" W/ SLOTS	ASTM A709 Gr. 36 CVN
5	1	SHIM PL 1/2" X 4" X 16" (W/O SLOTS)	ASTM A709 Gr. 36 CVN



"LEFT / TRAILING"



15° SKEW NOT SHOWN IN THESE VIEWS

Vermont Agency of Transportation

RECEIVED

CK'D BY D. PETERSON OK'D BY C. CARLSON

March 6, 2015

RESUBMIT NO Approved

BY C. CARLSON DATE 03/09/2015

ITEM #: 525.45

SHEET 3 OF 3

STRUCTURAL STEEL TO COMPLY W/ ASTM A6

BRIDGE RAIL DETAILS SHEET

PROJECT: STOWE BRIDGE 0235 (11), VT. RT. 108, MAJOR COLLECTOR, BRIDGE #2
TOWN OF STOWE, LAMOILLE COUNTY

TOLERANCE UNLESS OTHERWISE NOTED:
FRACTIONS = ± 1/16"
ANGLES = ± 1/2"
DIAMETERS = ± 1/32"

R NO.	DATE	DESCRIPTION	BY	R NO.	DATE	DESCRIPTION	BY

DRAWN	E.P.	1/13/15
CHECKED	D.L.	1/15/15
APPROVED		
SCALE	SCHEMATIC	
DRAWING NO. FR L - STOWE		

ELDERLEE, INC.
OAKS CORNERS, NEW YORK 14578
E-Mail: dlong@elderlee.com / epeek@elderlee.com
Tel: 315-789-6670 Fax: 315-789-6615

