

BOX BEAM GUARDRAIL (PAINTED BROWN)
 VT108 STA 3+40.12 LT - STA 3+50.21 LT
 VT108 STA 4+83.56 LT - STA 5+03.00 LT
 VT108 STA 3+10.78 RT - STA 3+41.87 RT
 VT108 STA 4+75.08 RT - STA 5+00.00 RT

VERTICAL GRANITE CURB
 VT108 STA 3+34.25 LT - STA 3+50.21 LT
 VT108 STA 4+83.56 LT - STA 5+05.00 LT
 VT108 STA 5+23.64 LT - STA 6+40.00 LT
 VT108 STA 2+00.00 RT - STA 2+08.66 RT
 VT108 STA 2+28.65 RT - STA 3+41.87 RT
 VT108 STA 4+75.08 RT - STA 5+14.83 RT
 VT108 STA 5+23.64 RT - STA 5+69.34 RT
 VT108 STA 5+72.32 RT - STA 6+40.00 RT

GAS PLANK RAIL
 VT108 STA 3+10.00 RT - STA 3+41.87 RT
 VT108 STA 4+73.60 RT - STA 5+08.00 RT

N/F R.L. VALLEE

N/F WILDFLOWER DESIGN INC.

VT 108 STA 4+00.00 =
 CHANNEL LINE STA 11+00.00
 $\Delta = 75^\circ$ LT

CL BEARING #1
 STA 3+48.00
 BEGIN
 PROJECT/BRIDGE
 STA 3+47.22

N/F FISHMAN

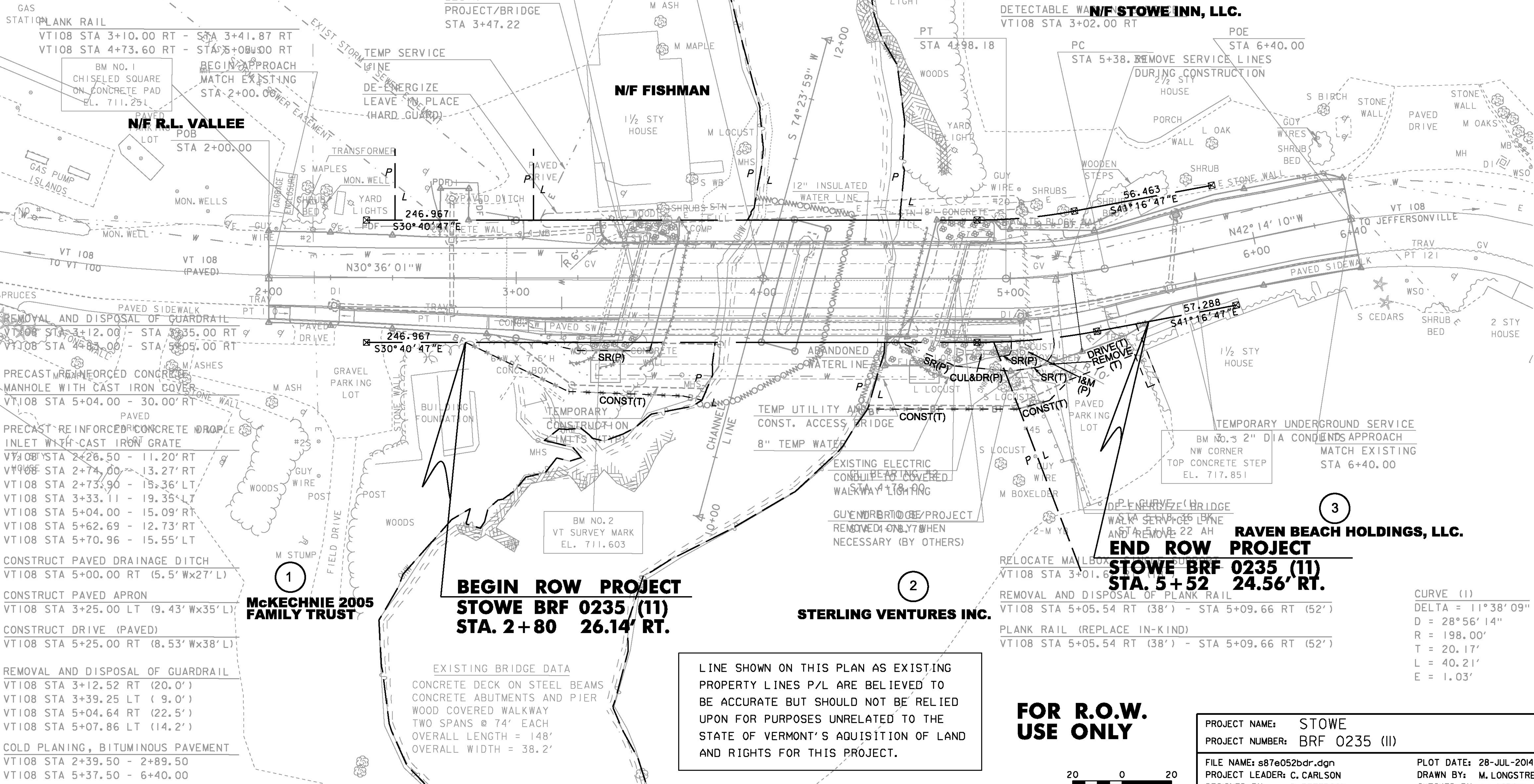
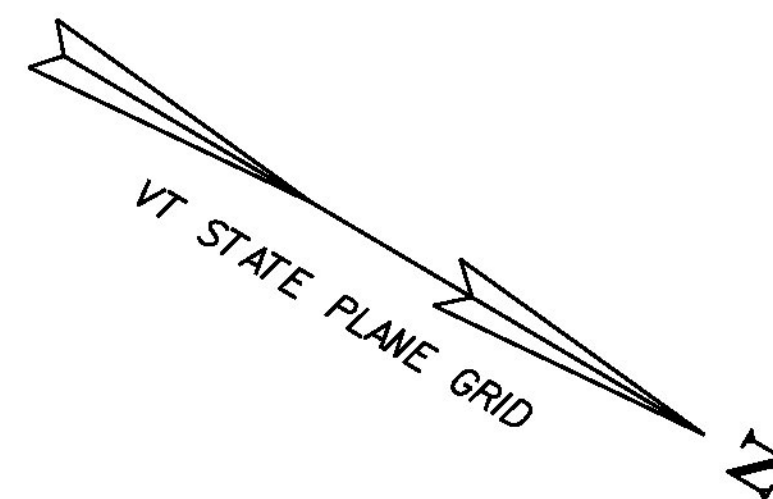
BRIDGE RAILING, GALVANIZED STEEL
 TUBING/CONCRETE COMBINATION (PAINTED BROWN)
 VT108 STA 3+50.21 LT - STA 4+83.56 LT

CONCRETE, HIGH PREFORMACE CLASS A (BARRIER WALL)
 VT108 STA 3+40.12 RT - STA 4+75.08 RT

PORTLAND CEMENT CONCRETE SIDEWALK, 5 INCH
 VT108 STA 2+00.00 RT - STA 2+08.66 RT
 VT108 STA 2+28.65 RT - STA 3+41.87 RT
 VT108 STA 4+75.08 RT - STA 5+14.83 RT
 VT108 STA 5+35.23 RT - STA 6+40.00 RT

PORTLAND CEMENT CONCRETE SIDEWALK, 8 INCH
 VT108 STA 2+08.66 RT - STA 2+28.65 RT
 VT108 STA 5+14.83 RT - STA 5+35.23 RT

DETECTABLE WALKWAY
N/F STOWE INN, LLC.
 VT108 STA 3+02.00 RT



REMOVAL AND DISPOSAL OF GUARDRAIL
 VT108 STA 3+12.00 - STA 3+35.00 RT
 VT108 STA 4+83.00 - STA 5+05.00 RT

PRECAST REINFORCED CONCRETE MANHOLE WITH CAST IRON COVER
 VT108 STA 5+04.00 - 30.00 RT

PRECAST REINFORCED CONCRETE DROPLE INLET WITH CAST IRON GRATE
 VT108 STA 2+26.50 - 11.20 RT
 VT108 STA 2+74.00 - 13.27 RT
 VT108 STA 2+73.90 - 15.36 LT
 VT108 STA 3+33.11 - 19.35 LT
 VT108 STA 5+04.00 - 15.09 RT
 VT108 STA 5+62.69 - 12.73 RT
 VT108 STA 5+70.96 - 15.55 LT

CONSTRUCT PAVED DRAINAGE DITCH
 VT108 STA 5+00.00 RT (5.5' Wx27' L)

CONSTRUCT PAVED APRON
 VT108 STA 3+25.00 LT (9.43' Wx35' L)

CONSTRUCT DRIVE (PAVED)
 VT108 STA 5+25.00 RT (8.53' Wx38' L)

REMOVAL AND DISPOSAL OF GUARDRAIL
 VT108 STA 3+12.52 RT (20.0')
 VT108 STA 3+39.25 LT (9.0')
 VT108 STA 5+04.64 RT (22.5')
 VT108 STA 5+07.86 LT (14.2')

COLD PLANING, BITUMINOUS PAVEMENT
 VT108 STA 2+39.50 - 2+89.50
 VT108 STA 5+37.50 - 6+40.00

McKECHNIE 2005 FAMILY TRUST

**BEGIN ROW PROJECT
 STOWE BRF 0235 (11)
 STA. 2+80 26.14' RT.**

EXISTING BRIDGE DATA
 CONCRETE DECK ON STEEL BEAMS
 CONCRETE ABUTMENTS AND PIER
 WOOD COVERED WALKWAY
 TWO SPANS @ 74' EACH
 OVERALL LENGTH = 148'
 OVERALL WIDTH = 38.2'

LINE SHOWN ON THIS PLAN AS EXISTING
 PROPERTY LINES P/L ARE BELIEVED TO
 BE ACCURATE BUT SHOULD NOT BE RELIED
 UPON FOR PURPOSES UNRELATED TO THE
 STATE OF VERMONT'S ACQUISITION OF LAND
 AND RIGHTS FOR THIS PROJECT.

STERLING VENTURES INC.

**RAVEN BEACH HOLDINGS, LLC.
 END ROW PROJECT
 STOWE BRF 0235 (11)
 STA. 5+52 24.56' RT.**

RELOCATE MAILBOX
 VT108 STA 3+01.60

REMOVAL AND DISPOSAL OF PLANK RAIL
 VT108 STA 5+05.54 RT (38') - STA 5+09.66 RT (52')

PLANK RAIL (REPLACE IN-KIND)
 VT108 STA 5+05.54 RT (38') - STA 5+09.66 RT (52')

CURVE (1)
 DELTA = $11^\circ 38' 09''$
 D = 28'56"14"
 R = 198.00'
 T = 20.17'
 L = 40.21'
 E = 1.03'

**FOR R.O.W.
 USE ONLY**

20 0 20
 SCALE: 1" = 20'-0"

PROJECT NAME:	STOWE	FILE NAME:	s87e052bdr.dgn	PLOT DATE:	28-JUL-2014
PROJECT NUMBER:	BRF 0235 (11)	PROJECT LEADER:	C. CARLSON	DRAWN BY:	M. LONGSTREET
		DESIGNED BY:	D. PETERSON	CHECKED BY:	J. LACROIX
		R.O.W. LAYOUT SHEET		ROW SHEET	63 OF 64