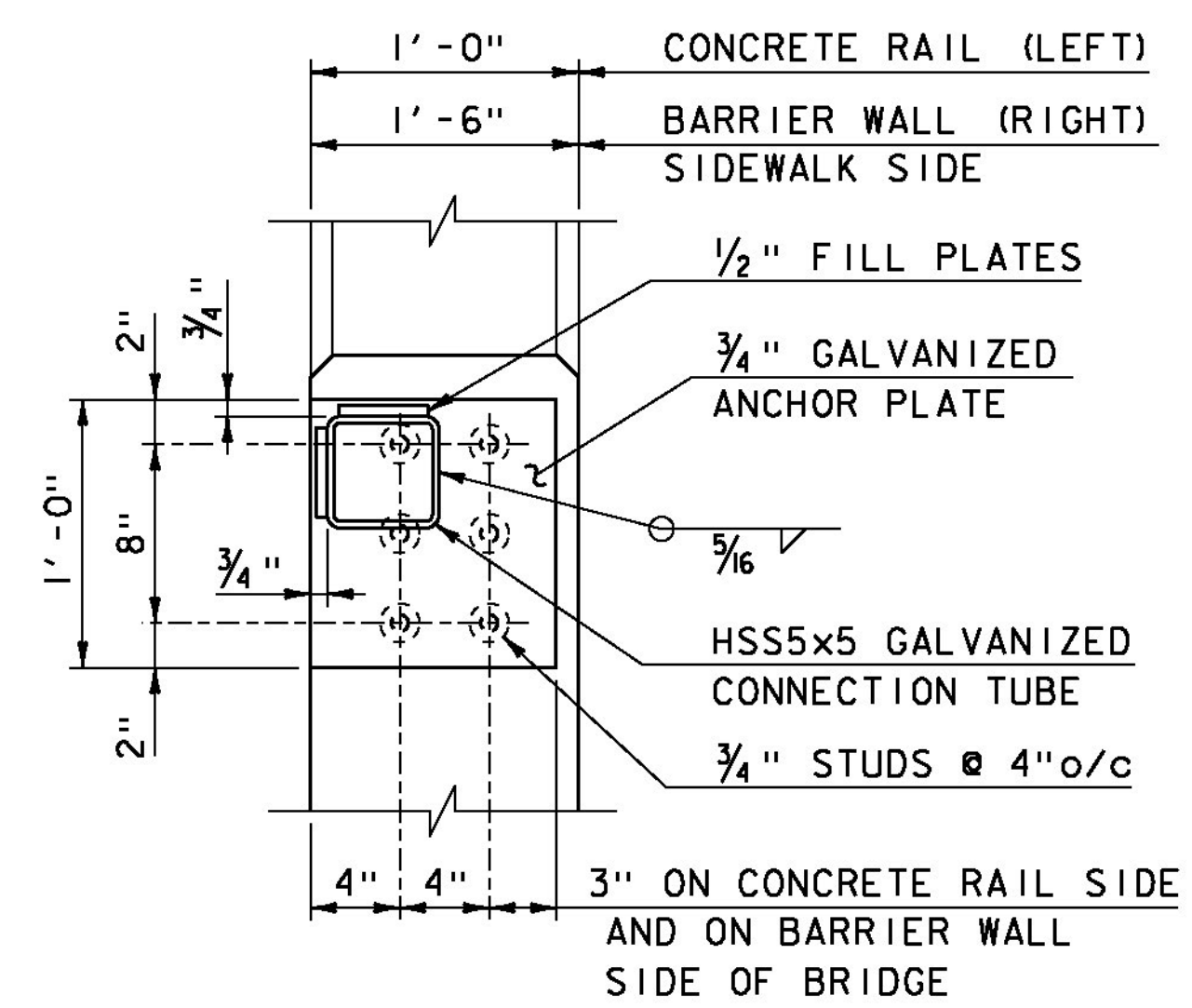


**BRIDGE RAILING ELEVATION (LEFT SIDE)**

SCALE 1/2" = 1'-0"

- 1) USE BRIDGE RAILING, GALVANIZED STEEL TUBING/CONCRETE COMBINATION RAILING STD 352A. MODIFY RAILING AS SHOWN.
- 2) BOX BEAM GUARD RAIL CONNECTION AND ANCHOR PLATE IS SIMILAR AT THE COVERED WALKWAY BARRIER WALL LOCATIONS.

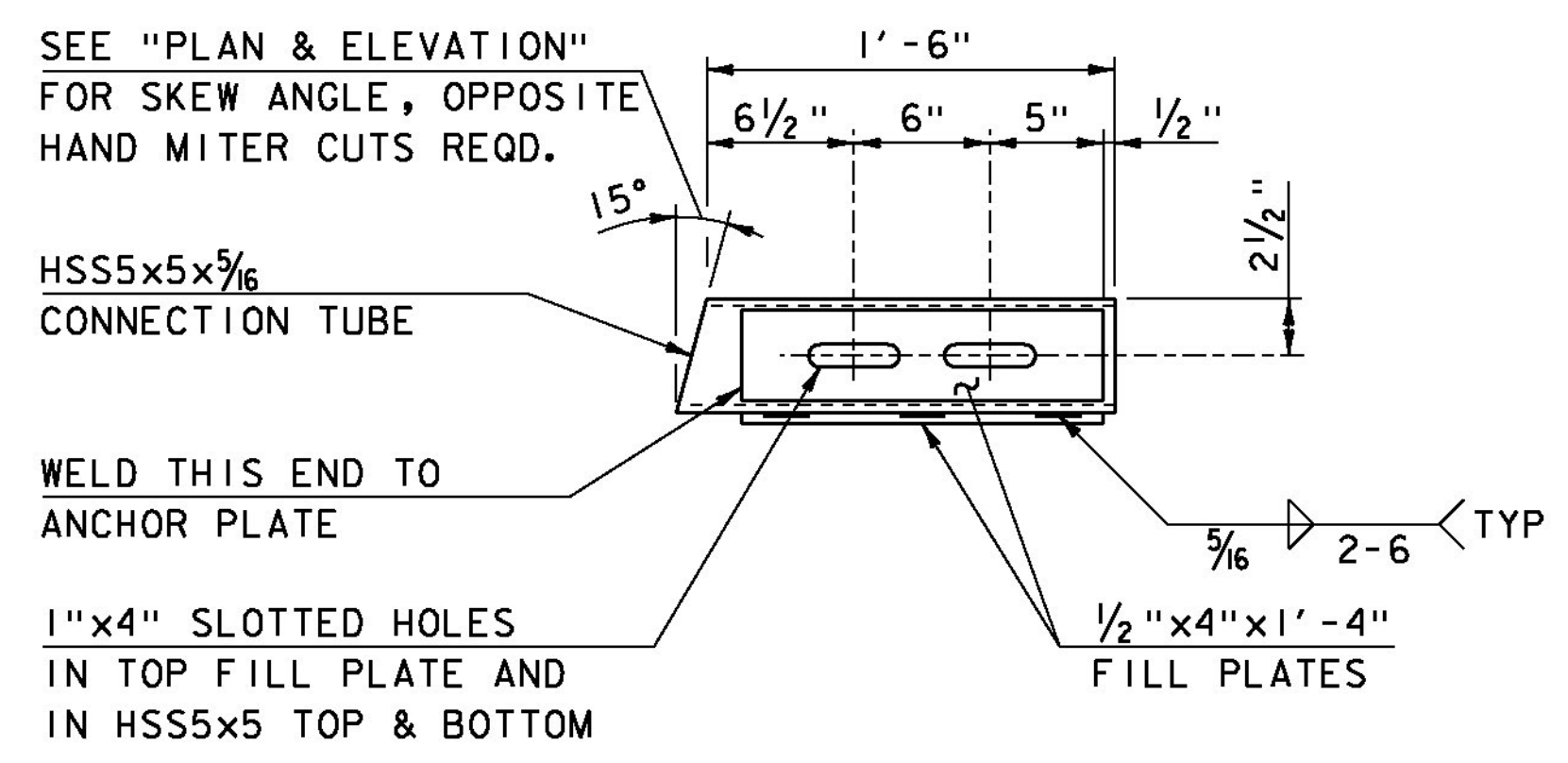
AESTHETIC DETAIL, RECESSED PANELS  
 SEE STD S-352A FOR ADDITION DETAILS, THE RECESSED PANES SHALL BE INCLUDED ON BOTH SIDES OF THE BRIDGE RAIL AND ON THE TRAFFIC SIDE OF THE COVERED WALKWAY BARRIER RAIL, ALL THREE LOCATIONS SHALL HAVE MATCHING PATTERN AND LAYOUTS AS SHOWN HERE AND STD S-352A.



**SECTION A-A**

SCALE 1/2" = 1'-0"

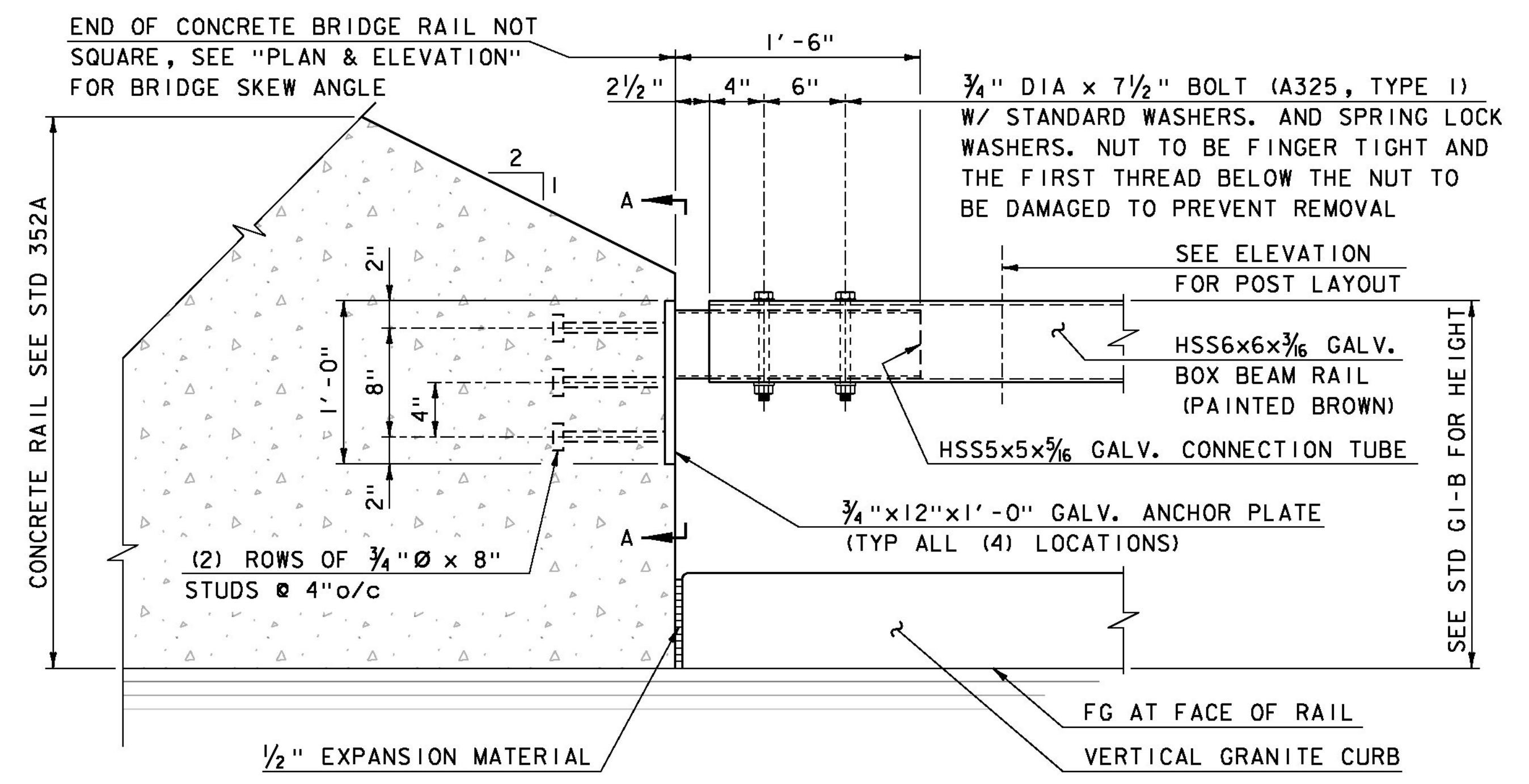
- 1) END OF BARRIER WALL AND CONCRETE RAIL NOT SQUARE, SEE "PLAN & ELEVATION" FOR SKEW ANGLE.



**CONNECTION TUBE PLAN DETAIL**

SCALE 1/2" = 1'-0"

- 1) ALL HSS STEEL AND PLATE STEEL TO BE GALVANIZED UNLESS OTHERWISE NOTED.



**RAIL CONNECTION ELEVATION DETAIL**

SCALE 1/2" = 1'-0"

PROJECT NAME:	STOWE
PROJECT NUMBER:	BRF 0235 (II)
FILE NAME:	s87e052rail.dgn
PROJECT LEADER:	C. CARLSON
DESIGNED BY:	D. PETERSON
BRIDGE & APPROACH RAIL DETAILS	
PLOT DATE:	28-JUL-2014
DRAWN BY:	M. LONGSTREET
CHECKED BY:	J. LACROIX
SHEET	36 OF 64