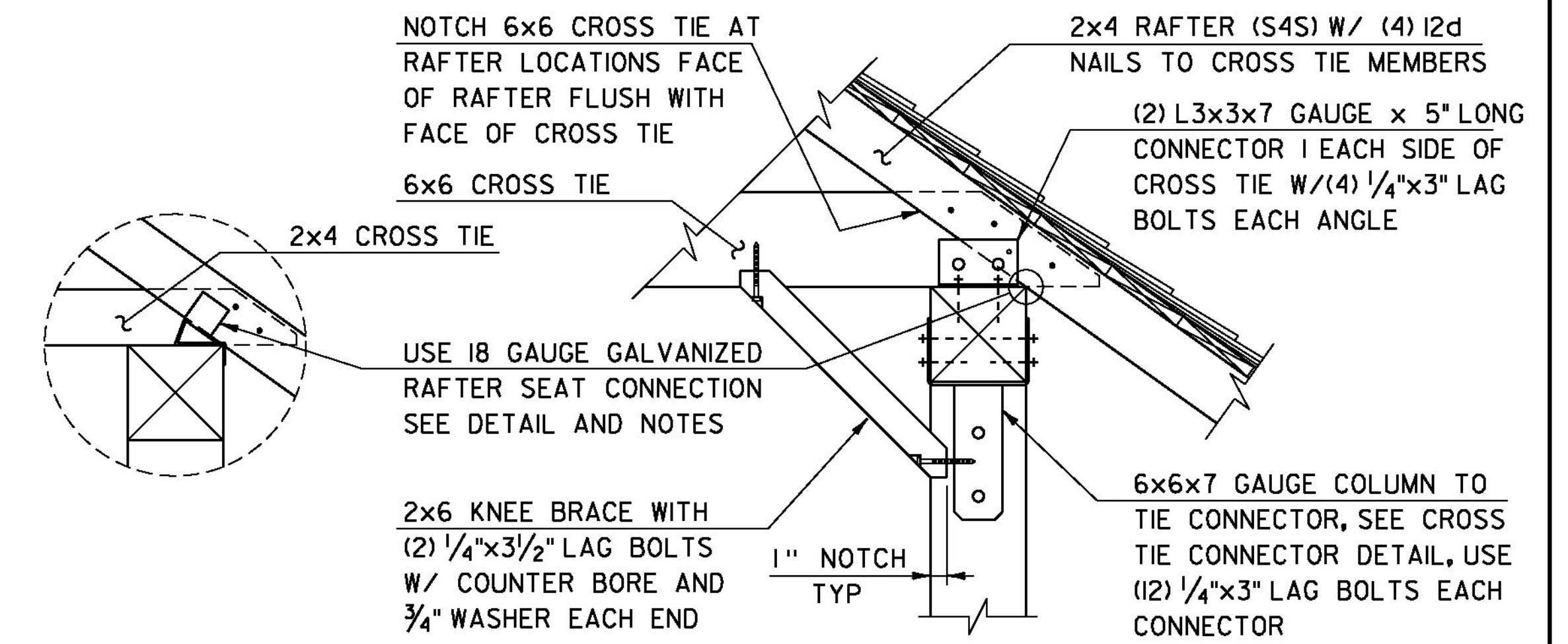


6x6 COLUMN CONNECTOR

SCALE: 3" = 1'-0"

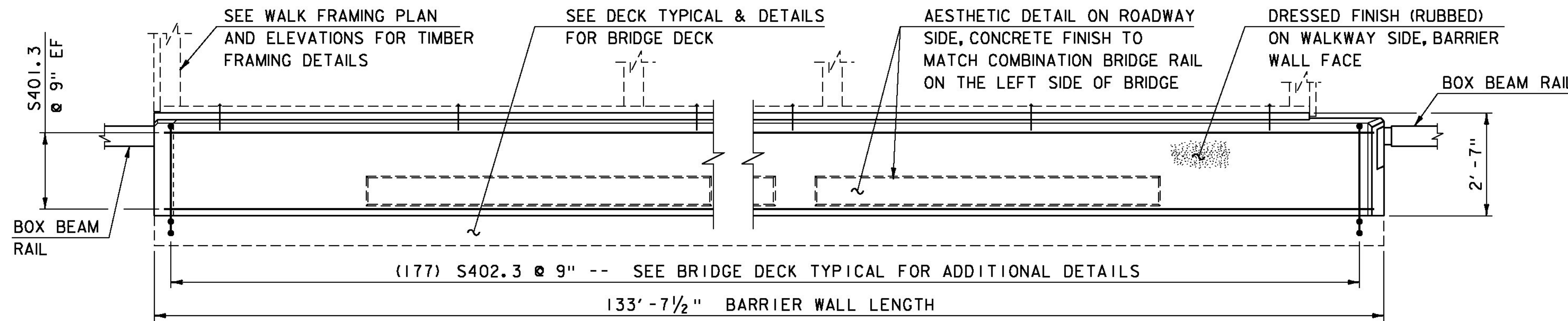
- 1) THE 7 GAUGE GALVANIZED STEEL PLATE USED FOR CONNECTIONS HAS AN ASSUMED APPROXIMATE THICKNESS OF 0.138".



CROSS TIE DETAIL

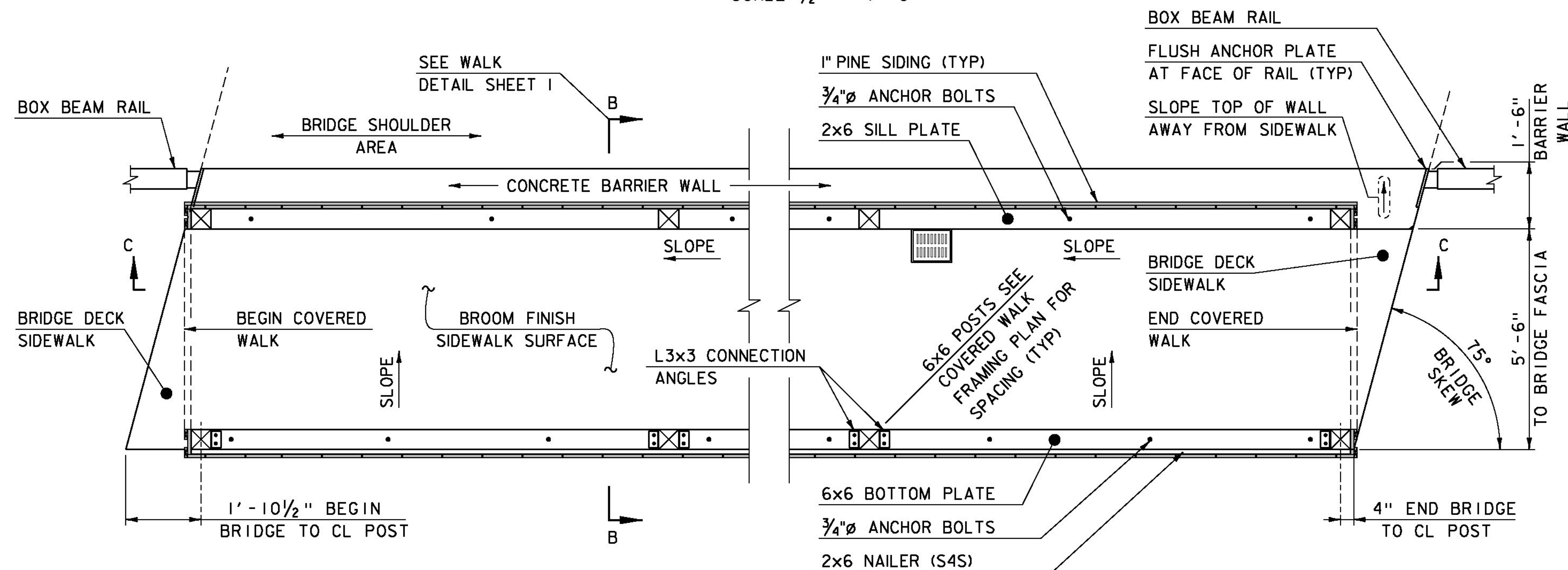
SCALE: 1 1/2" = 1'-0"

- 1) ALL 1/4" LAG BOLTS SHALL BE ZINC PLATED, HEX HEAD LAG SCREWS WITH A 3/4" WASHER, OR EQUIVALENT STRUCTURAL WOOD SCREW. PRE DRILL A PILOT HOLE FOR EACH BOLT.
- 2) ALL RAFTERS NOT LAPPED AND NOTCHED INTO A 6x6 CROSS TIE MEMBER SHALL BE CONNECTED TO THE 6x6 TOP PLATE MEMBER WITH AN 18 GAUGE, GALVANIZED STEEL, VARIABLE PITCH CONNECTION PLATE. THE RAFTERS SHALL ALSO BE NAILED TO THE 2x4 CROSS TIE MEMBERS WITH (2) 8d NAILS.



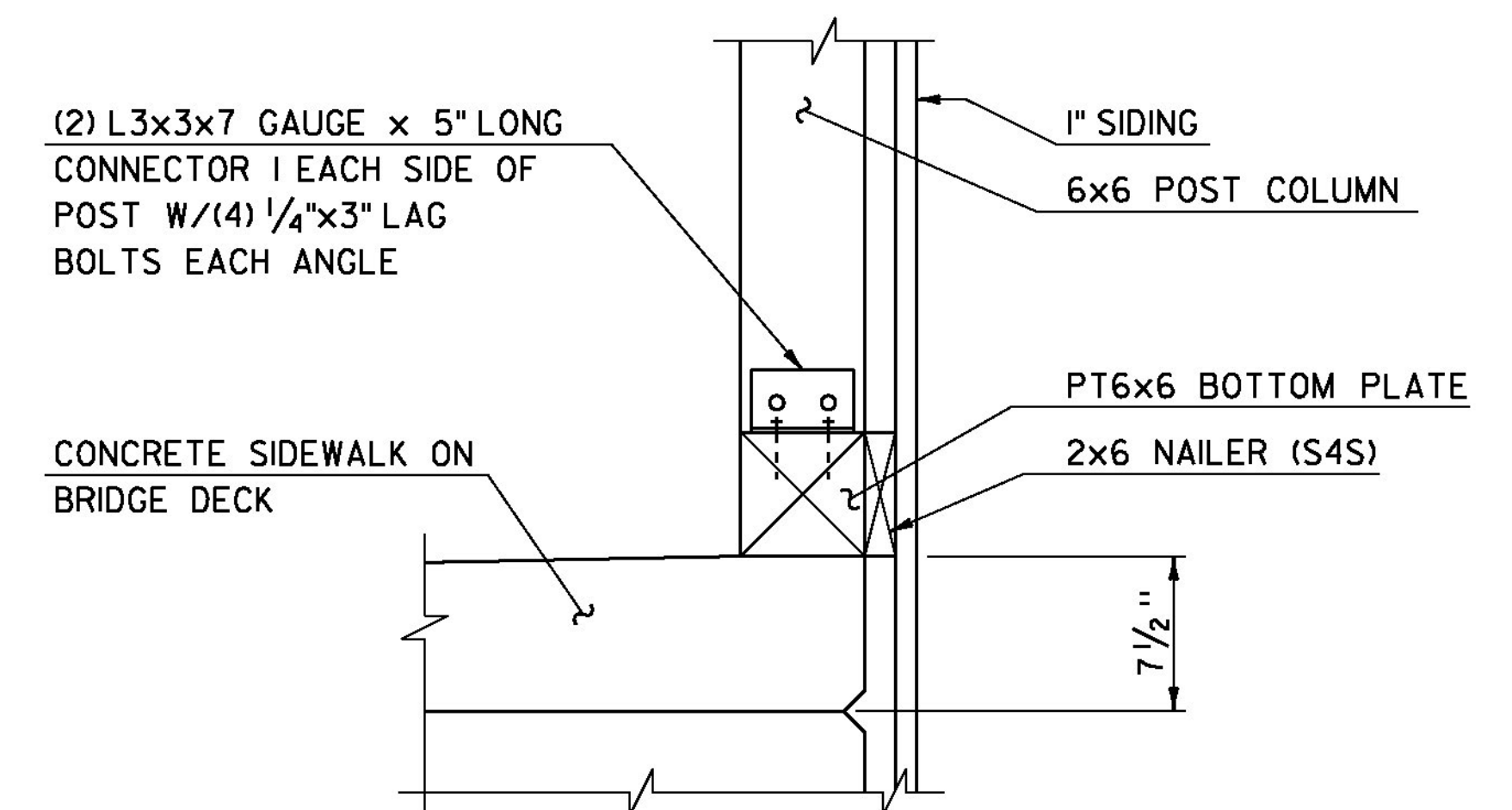
BARRIER WALL ELEVATION C-C

SCALE: 1/2" = 1'-0"



COVERED WALK PLAN DETAIL

SCALE: 1/2" = 1'-0"



POST COLUMN CONNECTION DETAIL

SCALE: 1 1/2" = 1'-0"

- 1) THE POST COLUMN CONNECTION ON THE CONCRETE BARRIER WALL SIDE OF THE WALK WAY SHALL HAVE (3) 16d GALVANIZED NAILS ON (2) SIDES.
- 2) THE 4x4 CRIPPLE POST SHALL HAVE (2) 16d GALVANIZED NAILS ON (2) SIDES.

NOTE: DIMENSION IN INCHES UNLESS OTHERWISE NOTED.

PROJECT NAME:	STOWE	FILE NAME:	s87e052walk.dgn	PLOT DATE:	28-JUL-2014
PROJECT NUMBER:	BRF 0235 (II)	PROJECT LEADER:	C. CARLSON	DRAWN BY:	M. LONGSTREET
		DESIGNED BY:	D. PETERSON	CHECKED BY:	J. LACROIX
		WALK DETAIL SHEET 2		SHEET	35 OF 64