

BOX BEAM SLAB/RAIL: 3'x4'x12' BROWN
 VT CR STA 3+40.21 LT - STA 3+50.21 RT
 VT CR STA 4+03.56 LT - STA 4+03.56 RT
 VT CR STA 3+10.78 RT - STA 3+10.78 RT
 VT CR STA 4+03.08 RT - STA 4+03.08 RT

VERTICAL GRANITE CURBS
 VT CR STA 2+83.56 LT - STA 2+83.56 LT
 VT CR STA 3+23.64 LT - STA 3+23.64 LT
 VT CR STA 2+00.00 RT - STA 2+00.00 RT
 VT CR STA 2+28.65 RT - STA 2+28.65 RT
 VT CR STA 4+03.08 RT - STA 4+03.08 RT
 VT CR STA 5+23.64 RT - STA 5+23.64 RT
 VT CR STA 7+22.36 RT - STA 7+22.36 RT

GAS STATION ANK #41
 VT CR STA 2+97.00 RT - STA 2+97.00 RT
 VT CR STA 4+23.60 RT - STA 4+23.60 RT

RM NO. 1
 CHISELED SQUARE ON CONCRETE PAD
 EL. 711.25

PAVED PARKING LOT
 STA 2+00.00

EXIST. STORM & SEWER EASEMENT

EXISTING DRAINAGE INLET #1 - NEW PPE CONNECTION

EXISTING DRAINAGE INLET #1 - NEW PPE CONNECTION

EXISTING DRAINAGE INLET #1 - NEW PPE CONNECTION

EXISTING DRAINAGE INLET #1 - NEW PPE CONNECTION

EXISTING DRAINAGE INLET #1 - NEW PPE CONNECTION

EXISTING DRAINAGE INLET #1 - NEW PPE CONNECTION

EXISTING DRAINAGE INLET #1 - NEW PPE CONNECTION

EXISTING DRAINAGE INLET #1 - NEW PPE CONNECTION

EXISTING DRAINAGE INLET #1 - NEW PPE CONNECTION

EXISTING DRAINAGE INLET #1 - NEW PPE CONNECTION

EXISTING DRAINAGE INLET #1 - NEW PPE CONNECTION

EXISTING DRAINAGE INLET #1 - NEW PPE CONNECTION

EXISTING DRAINAGE INLET #1 - NEW PPE CONNECTION

EXISTING DRAINAGE INLET #1 - NEW PPE CONNECTION

CL. BEARING #1
 STA 3+48.00

CL. BEARING #2
 STA 4+48.00

CL. BEARING #2
 STA 4+48.00

CL. BEARING #2
 STA 4+48.00

CL. BEARING #2
 STA 4+48.00

CL. BEARING #2
 STA 4+48.00

CL. BEARING #2
 STA 4+48.00

CL. BEARING #2
 STA 4+48.00

CL. BEARING #2
 STA 4+48.00

CL. BEARING #2
 STA 4+48.00

CL. BEARING #2
 STA 4+48.00

CL. BEARING #2
 STA 4+48.00

PORT AND CEMENT CONCRETE 5' THICK, 5' HIGH
 VT CR STA 2+00.00 RT - STA 2+08.65 RT
 VT CR STA 2+128.65 RT - STA 2+21.87 RT
 VT CR STA 4+03.08 RT - STA 4+03.08 RT
 VT CR STA 5+23.64 RT - STA 5+23.64 RT

PORT AND CEMENT CONCRETE 5' THICK, 5' HIGH
 VT CR STA 2+00.00 RT - STA 2+08.65 RT
 VT CR STA 2+128.65 RT - STA 2+21.87 RT
 VT CR STA 4+03.08 RT - STA 4+03.08 RT
 VT CR STA 5+23.64 RT - STA 5+23.64 RT

PORT AND CEMENT CONCRETE 5' THICK, 5' HIGH
 VT CR STA 2+00.00 RT - STA 2+08.65 RT
 VT CR STA 2+128.65 RT - STA 2+21.87 RT
 VT CR STA 4+03.08 RT - STA 4+03.08 RT
 VT CR STA 5+23.64 RT - STA 5+23.64 RT

PORT AND CEMENT CONCRETE 5' THICK, 5' HIGH
 VT CR STA 2+00.00 RT - STA 2+08.65 RT
 VT CR STA 2+128.65 RT - STA 2+21.87 RT
 VT CR STA 4+03.08 RT - STA 4+03.08 RT
 VT CR STA 5+23.64 RT - STA 5+23.64 RT

PORT AND CEMENT CONCRETE 5' THICK, 5' HIGH
 VT CR STA 2+00.00 RT - STA 2+08.65 RT
 VT CR STA 2+128.65 RT - STA 2+21.87 RT
 VT CR STA 4+03.08 RT - STA 4+03.08 RT
 VT CR STA 5+23.64 RT - STA 5+23.64 RT

PORT AND CEMENT CONCRETE 5' THICK, 5' HIGH
 VT CR STA 2+00.00 RT - STA 2+08.65 RT
 VT CR STA 2+128.65 RT - STA 2+21.87 RT
 VT CR STA 4+03.08 RT - STA 4+03.08 RT
 VT CR STA 5+23.64 RT - STA 5+23.64 RT

PORT AND CEMENT CONCRETE 5' THICK, 5' HIGH
 VT CR STA 2+00.00 RT - STA 2+08.65 RT
 VT CR STA 2+128.65 RT - STA 2+21.87 RT
 VT CR STA 4+03.08 RT - STA 4+03.08 RT
 VT CR STA 5+23.64 RT - STA 5+23.64 RT

PORT AND CEMENT CONCRETE 5' THICK, 5' HIGH
 VT CR STA 2+00.00 RT - STA 2+08.65 RT
 VT CR STA 2+128.65 RT - STA 2+21.87 RT
 VT CR STA 4+03.08 RT - STA 4+03.08 RT
 VT CR STA 5+23.64 RT - STA 5+23.64 RT

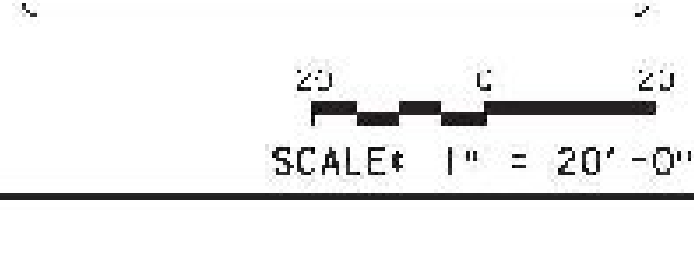
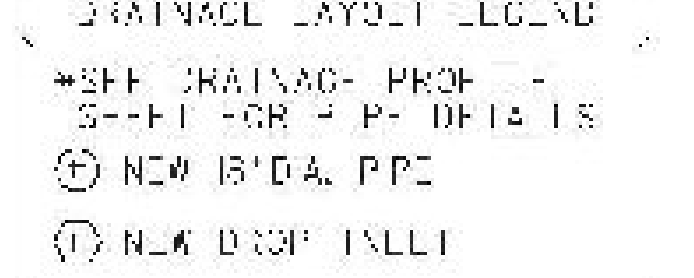
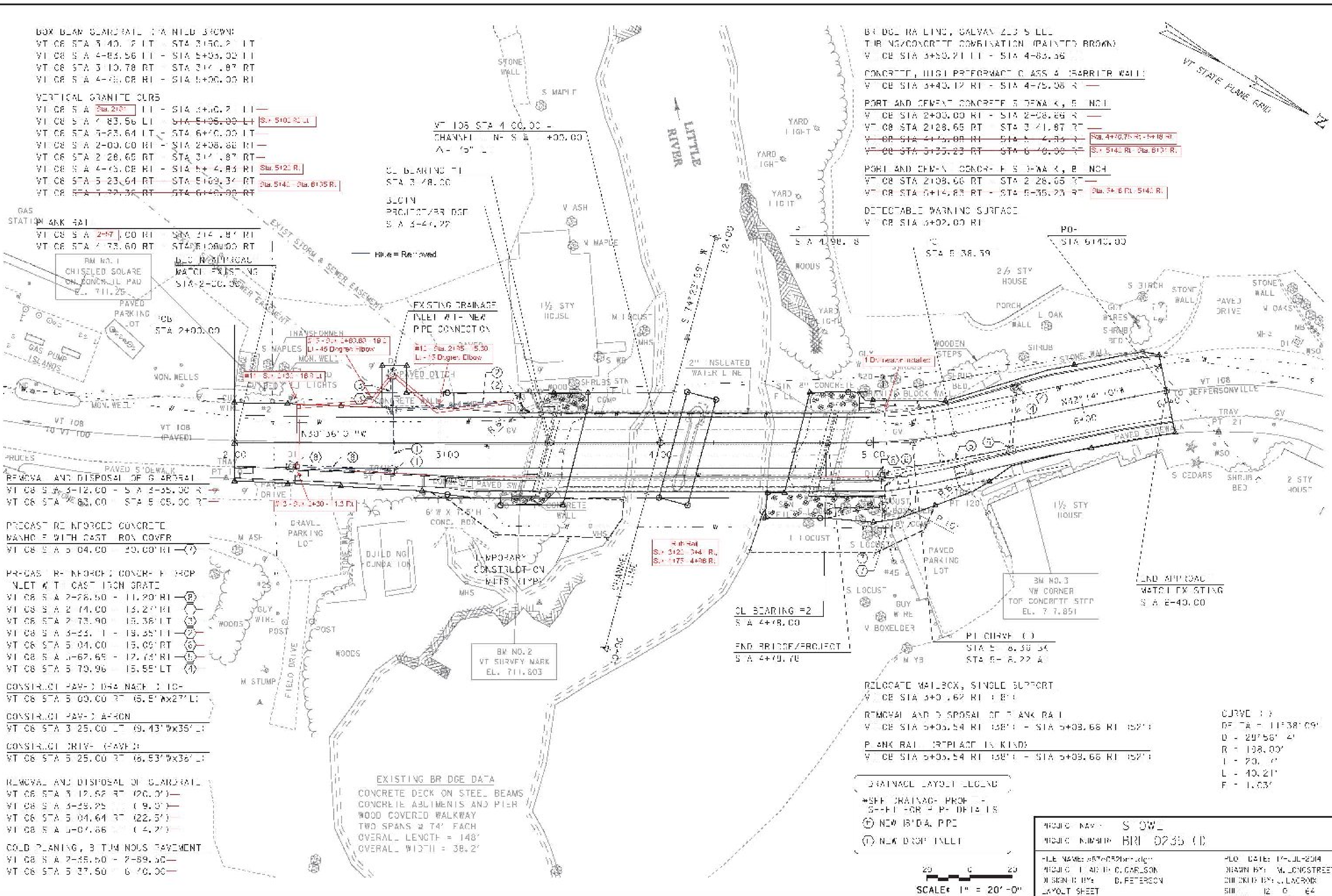
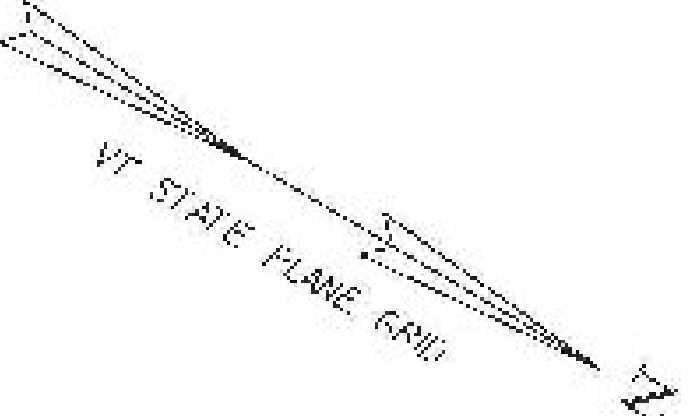
PORT AND CEMENT CONCRETE 5' THICK, 5' HIGH
 VT CR STA 2+00.00 RT - STA 2+08.65 RT
 VT CR STA 2+128.65 RT - STA 2+21.87 RT
 VT CR STA 4+03.08 RT - STA 4+03.08 RT
 VT CR STA 5+23.64 RT - STA 5+23.64 RT

PORT AND CEMENT CONCRETE 5' THICK, 5' HIGH
 VT CR STA 2+00.00 RT - STA 2+08.65 RT
 VT CR STA 2+128.65 RT - STA 2+21.87 RT
 VT CR STA 4+03.08 RT - STA 4+03.08 RT
 VT CR STA 5+23.64 RT - STA 5+23.64 RT

PORT AND CEMENT CONCRETE 5' THICK, 5' HIGH
 VT CR STA 2+00.00 RT - STA 2+08.65 RT
 VT CR STA 2+128.65 RT - STA 2+21.87 RT
 VT CR STA 4+03.08 RT - STA 4+03.08 RT
 VT CR STA 5+23.64 RT - STA 5+23.64 RT

PORT AND CEMENT CONCRETE 5' THICK, 5' HIGH
 VT CR STA 2+00.00 RT - STA 2+08.65 RT
 VT CR STA 2+128.65 RT - STA 2+21.87 RT
 VT CR STA 4+03.08 RT - STA 4+03.08 RT
 VT CR STA 5+23.64 RT - STA 5+23.64 RT

PORT AND CEMENT CONCRETE 5' THICK, 5' HIGH
 VT CR STA 2+00.00 RT - STA 2+08.65 RT
 VT CR STA 2+128.65 RT - STA 2+21.87 RT
 VT CR STA 4+03.08 RT - STA 4+03.08 RT
 VT CR STA 5+23.64 RT - STA 5+23.64 RT



PROJECT NAME: S OWL
 PROJECT NUMBER: HRI 0235 (1)
 FILE NAME: 05700235.dwg
 DESIGNER: C. CARLSON
 CHECKER: B. PETERSON
 LAYOUT SHEET
 DATE: 17-JUL-2014
 DRAWN BY: W. LONGSTREET
 CHECKED BY: J. LACROIX
 SHEET: 12 OF 64