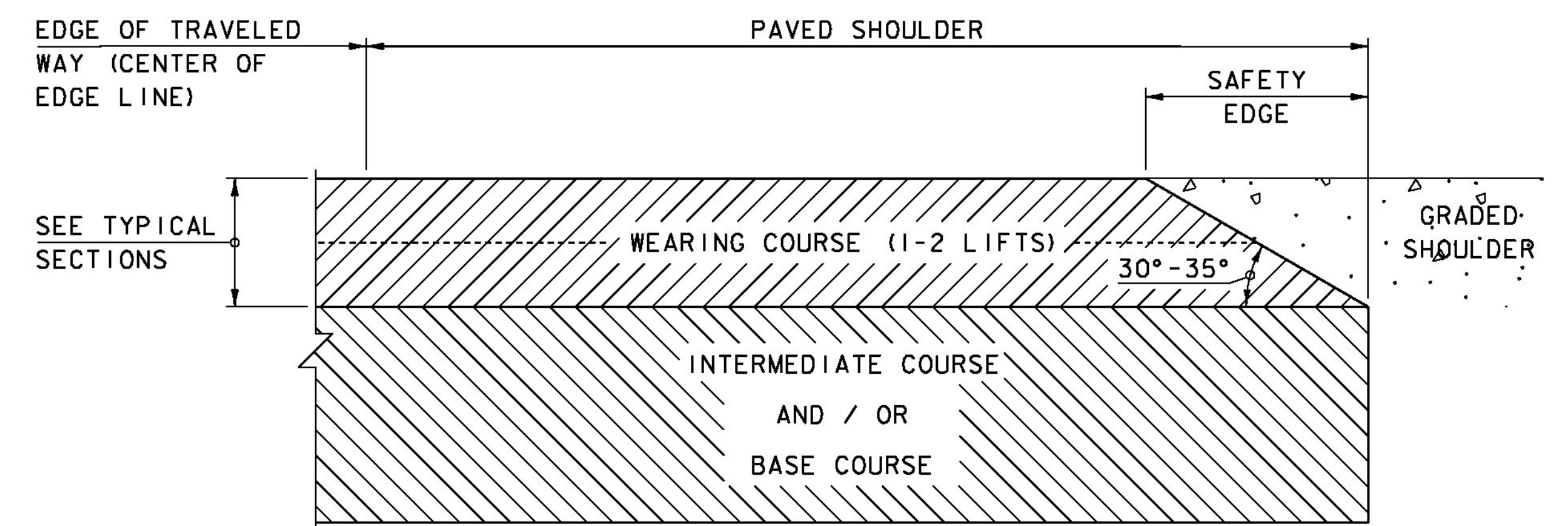


PLANK RAIL (PEDESTRIAN RAILING)

SCALE $\frac{3}{4}$ " = 1'-0"

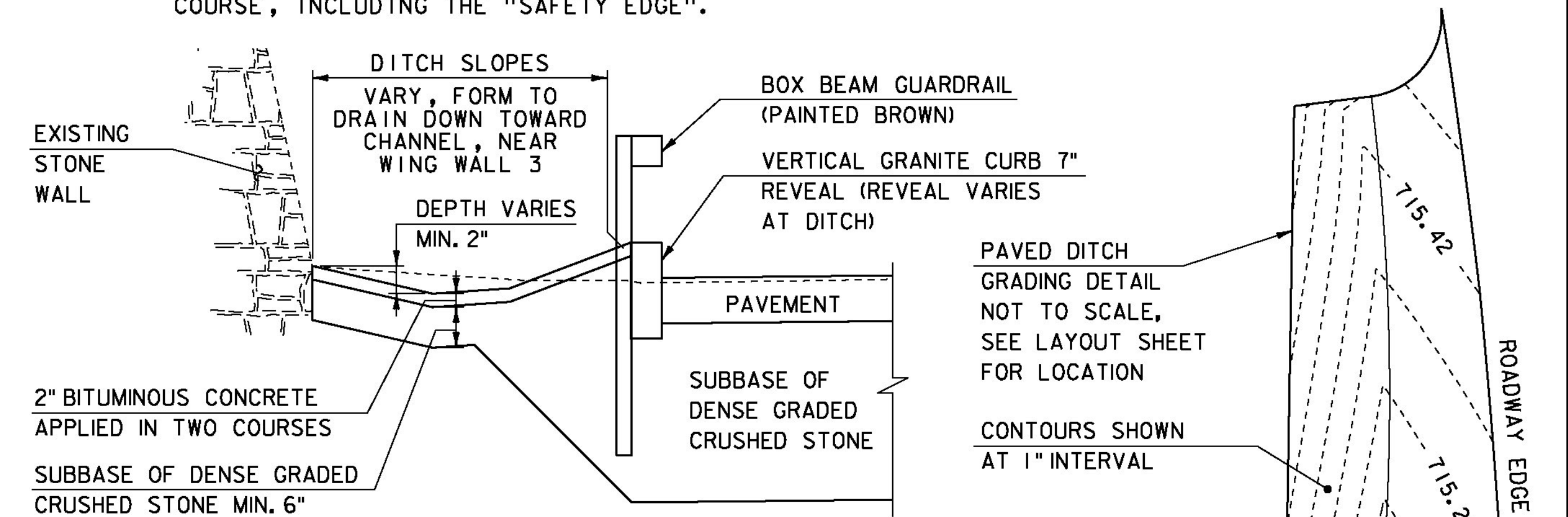
- 1) THE HANDGRIP PORTION OF PEDESTRIAN RAIL SHALL HAVE A SMOOTH SURFACE WITH NO SHARP CORNERS.
- 2) EDGES ON TOP SIDES OF WOOD PLANK SHALL HAVE A RADIUS OF 1/4". RAILING SHALL BE CONTINUOUS FOR THE FULL LENGTH AS INDICATED ON THE PLANS.



SAFETY EDGE DETAIL

NOT TO SCALE

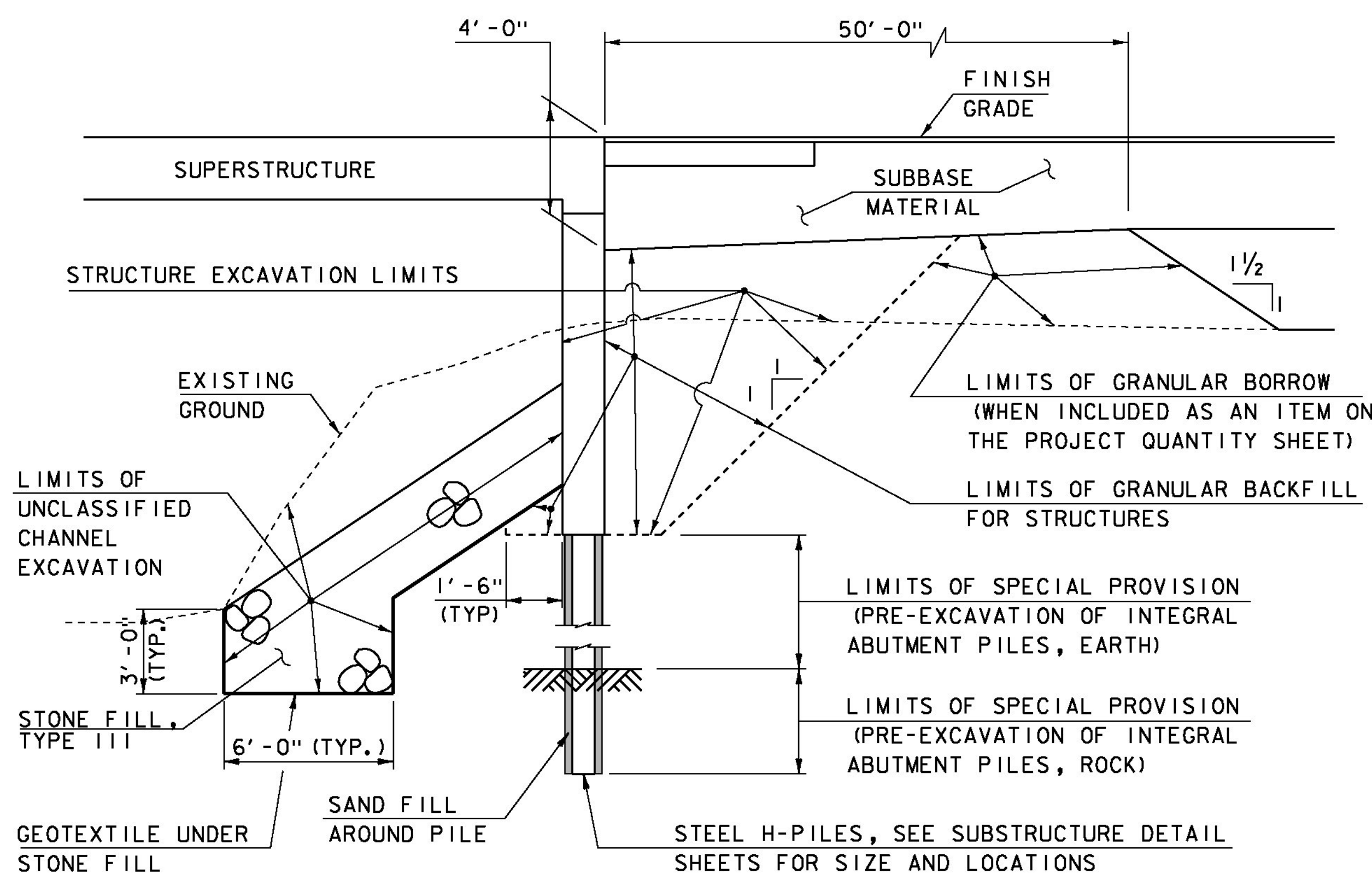
1. LEVELING COURSE MAY INCLUDE THE "SAFETY EDGE" AT THE CONTRACTOR'S CHOICE.
2. THE EDGE OF PAVEMENT SHALL BE FORMED IN SUCH A WAY THAT THE BITUMINOUS CONCRETE PAVEMENT IS EXTRUDED OR COMPRESSED TO FORM THE 30 TO 35 DEGREE ANGLE. DEVICES THAT SIMPLY STRIKE-OFF THE MIX WITHOUT PROVIDING ANY COMPACTIVE EFFORT WILL NOT BE ALLOWED.
3. THE PAVED SHOULDER EXTENDS FROM THE EDGE OF TRAVELED WAY TO THE EDGE OF THE WEARING COURSE, INCLUDING THE "SAFETY EDGE".



PAVED DITCH TYPICAL

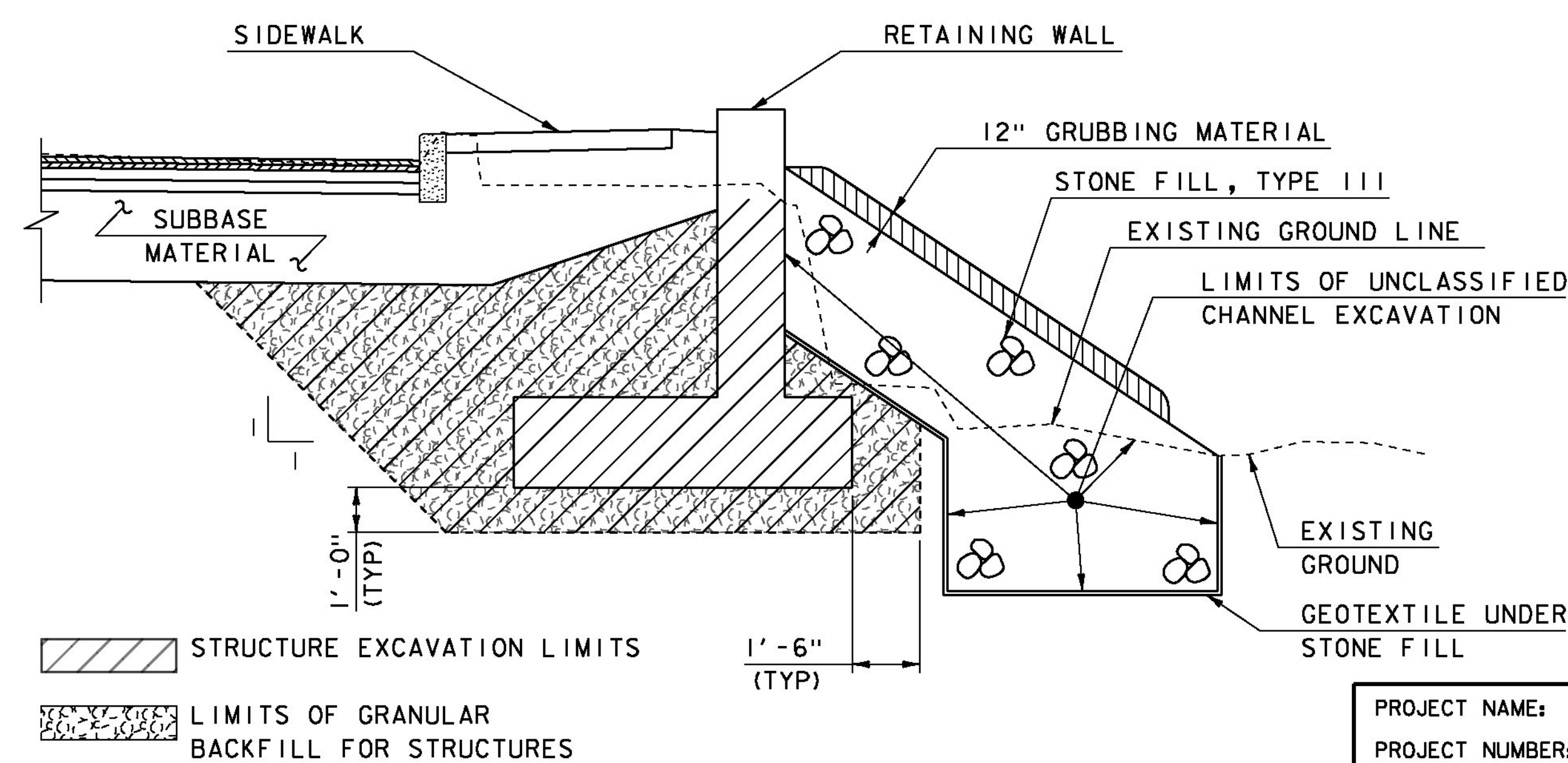
SCALE: $\frac{3}{4}$ " = 1'-0"

PAVED DITCH GRADING DETAIL NOT TO SCALE, SEE LAYOUT SHEET FOR LOCATION
CONTOURS SHOWN AT 1" INTERVAL



ABUTMENT EARTHWORK TYPICAL SECTION

NOT TO SCALE



RETAINING WALL EARTHWORK TYPICAL

SCALE: $\frac{3}{8}$ " = 1'-0"

PROJECT NAME: STOWE
PROJECT NUMBER: BRF 0235 (II)

FILE NAME: s87e052+yp.dgn
PROJECT LEADER: C. CARLSON
DESIGNED BY: D. PETERSON
TYPICAL SECTIONS SHEET 2
PLOT DATE: 28-JUL-2014
DRAWN BY: M. LONGSTREET
CHECKED BY: J. LACROIX
SHEET 4 OF 64