

PROJECT PROCESSED UNDER  
SECONDARY ROAD PLAN

STATE OF VERMONT  
AGENCY OF TRANSPORTATION



CONTRACT PLANS

THESE PLANS DO NOT REFLECT  
CHANGES MADE ON THE PROJECT.

PROPOSED IMPROVEMENT

TOWN OF COLCHESTER - MILTON

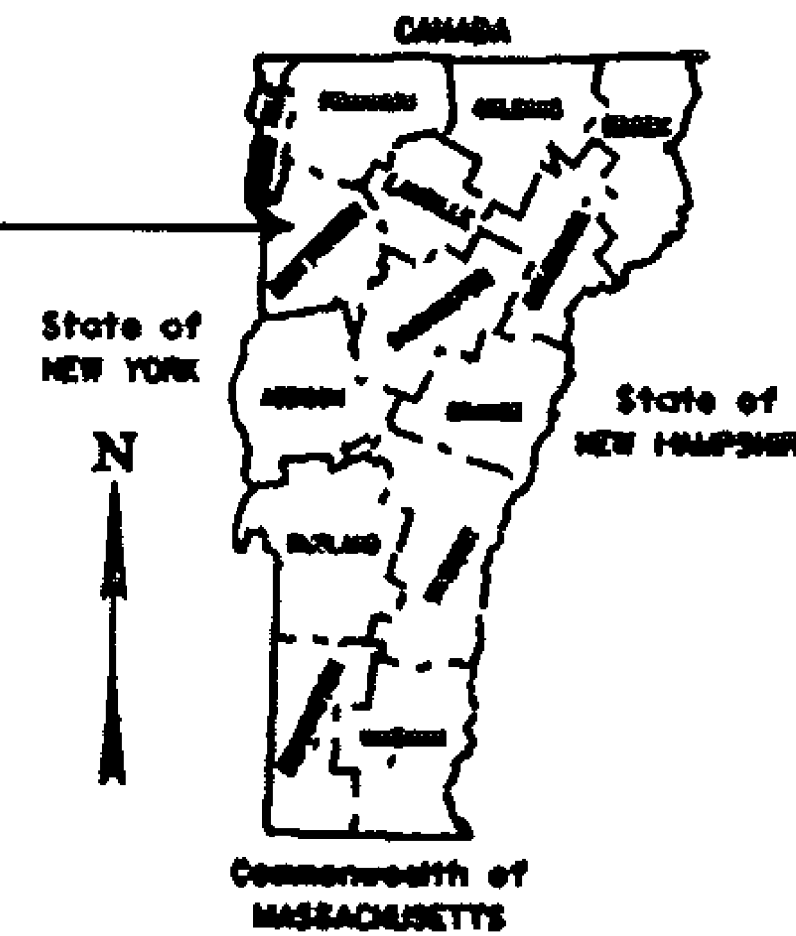
COUNTY OF CHITTENDEN

ROUTE NO. US 7

ROUTE CLASS FAS



PROJECT  
RS 0285(11)



SEP 16 1987

Date \_\_\_\_\_  
Franz W. Williams Const. Corp.  
Contractor

[Signature]  
Signature

[Title]  
Title

[Signature]  
Transportation Secretary's Signature

SEE SHEET 2 FOR INDEX

THESE PLANS ARE SUBJECT TO SUCH ENGINEERING  
CHANGES AS MAY BE REQUIRED BY THE FEDERAL HIGHWAY  
ADMINISTRATION OR THE CHIEF ENGINEER.  
CONSTRUCTION IS TO BE CARRIED ON IN ACCORDANCE  
WITH THESE PLANS AND THE STANDARD SPECIFICATIONS  
FOR CONSTRUCTION DATED 1986, AS APPROVED BY THE  
FEDERAL HIGHWAY ADMINISTRATION ON NOVEMBER 8, 1985  
FOR USE ON THIS PROJECT, INCLUDING ALL SUBSEQUENT  
REVISIONS AND SUCH REVISED SPECIFICATIONS AND  
SPECIAL PROVISIONS AS ARE INCORPORATED IN THESE  
PLANS.

SUBMITTED BY ORDER OF THE STATE TRANSPORTATION BOARD

APPROVED David D. Kelly DATE 7/2/87  
CHIEF ENGINEER

DEPARTMENT OF TRANSPORTATION  
FEDERAL HIGHWAY ADMINISTRATION

APPROVED \_\_\_\_\_ DATE \_\_\_\_\_  
DIVISION ADMINISTRATOR

PROJECT RS 0285(11)

SHEET 1 OF 28 SHEETS

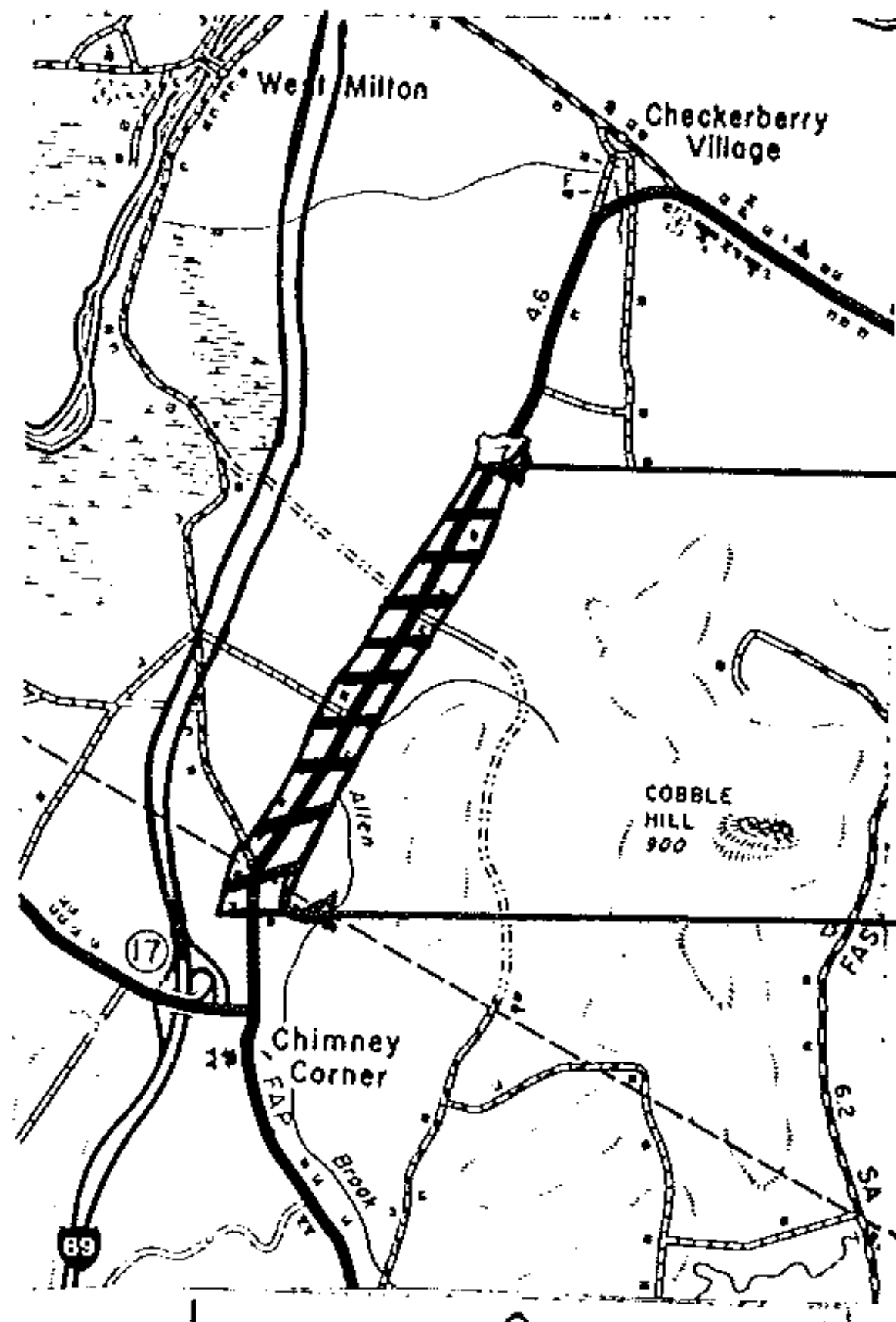
# INDEX OF SHEETS

1.	TITLE PAGE			
2.	INDEX OF SHEETS			
3.	DESCRIPTION AND LOCATION			
4.	TYPICAL SECTIONS & DESIGN DATA			
5.	PAVING LIMITS FOR DRIVES & TOWN ROADS			
6-7	PROJECT LENGTHS & ITEM QUANTITIES			
8	MAILBOX LOCATIONS			
9-10	SIGN & PAVEMENT MARKING DETAIL			
11-12	TRAFFIC SIGN SUMMARY SHEET			
13	DETAIL SHEET			
13A	MAILBOX DETAIL SHEET			
14	STANDARD SHEET	E-2	(2-3-86R)	
15	STANDARD SHEET	E-6	(2-3-86R)	
16	STANDARD SHEET	E-7	(2-3-86R)	
17	STANDARD SHEET	E-7a	(2-3-86R)	
18	STANDARD SHEET	E-8	(2-3-86R)	
19	STANDARD SHEET	E-15	(2-3-86R)	
20	STANDARD SHEET	E-15a	(2-3-86R)	
21	STANDARD SHEET	E-15c	(2-3-86R)	
22	STANDARD SHEET	E-19	(2-3-86R)	
23	STANDARD SHEET	E-19a	(2-3-86R)	
24	STANDARD SHEET	E-19b	(2-3-86R)	
25	STANDARD SHEET	E-23	(2-3-86R)	
26	STANDARD SHEET	E-24a	(2-3-86R)	
27	STANDARD SHEET	E-29	(2-3-86R)	
28	STANDARD SHEET	E-50	(2-3-86R)	

PROJECT COLCHESTER - MILTON

NO. RS 0285 (11)  
SHEET 2 OF 28 SHEETS

# DESCRIPTION AND LOCATION



END PROJECT  
MM 1.446

BEGIN PROJECT  
MM 6.853

MILTON — — — T/L  
COLCHESTER

SCALE: 1" = 1 MILE

1 INCH REPRESENTS 1 MILE

BEGINNING IN THE TOWN OF COLCHESTER AT  
MM 6.853 AND EXTENDING NORTHERLY 1.553 MILES  
TO MM 1.446 IN THE TOWN OF MILTON. RESURFACING,  
PAVEMENT MARKINGS, SIGNS AND REPLACE UNSAFE  
MAILBOXES.

1986 ADT 6760

LENGTH OF PROJECT: 1.553 MILES  
8200 FEET

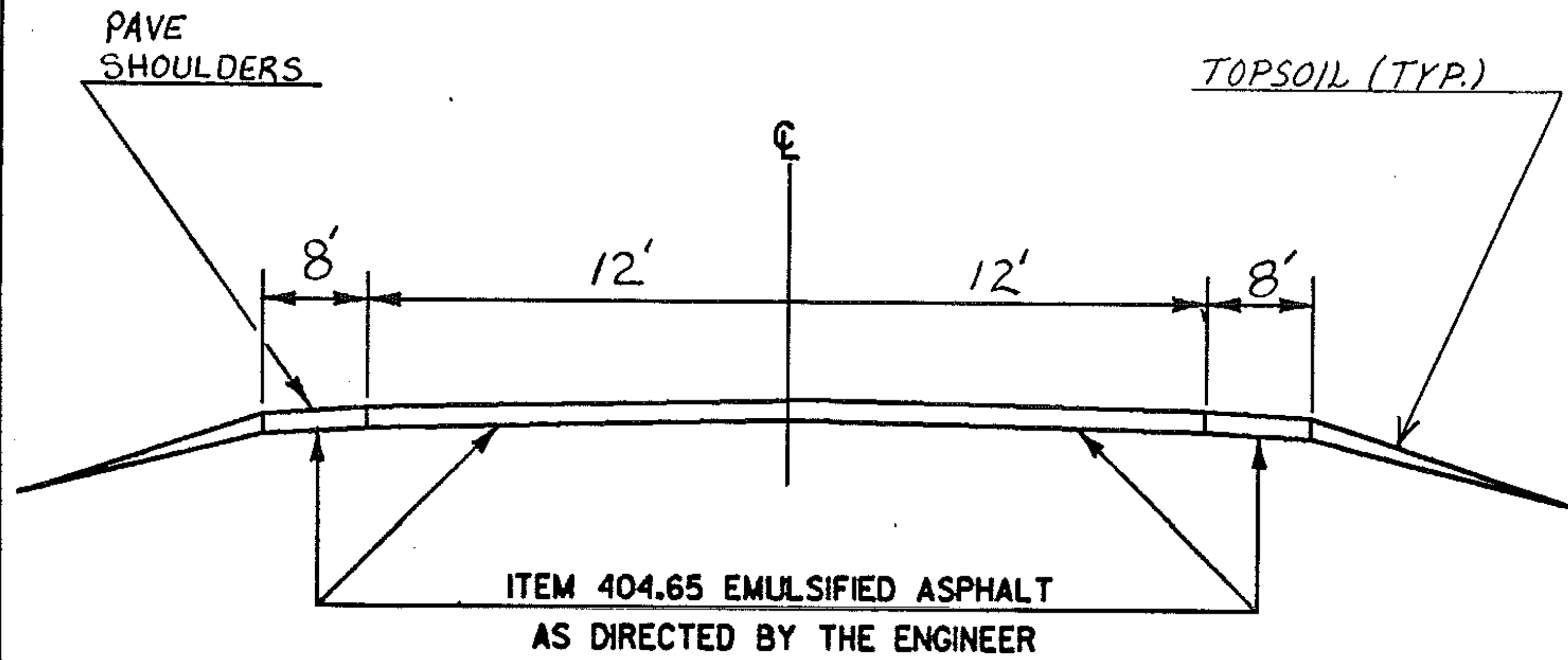
PROJECT COLCHESTER - MILTON

NO. RS 0285(11)

SHEET 3 OF 28 SHEETS

# TYPICAL SECTIONS & DESIGN DATA

ITEM 406.25 BITUMINOUS CONCRETE PAVEMENT  
LEVELING COURSE TYPE IV (455 TONS/MILE )  
1/2" WEARING COURSE TYPE III ( $\pm 1/4"$ )  
AS DIRECTED BY THE ENGINEER

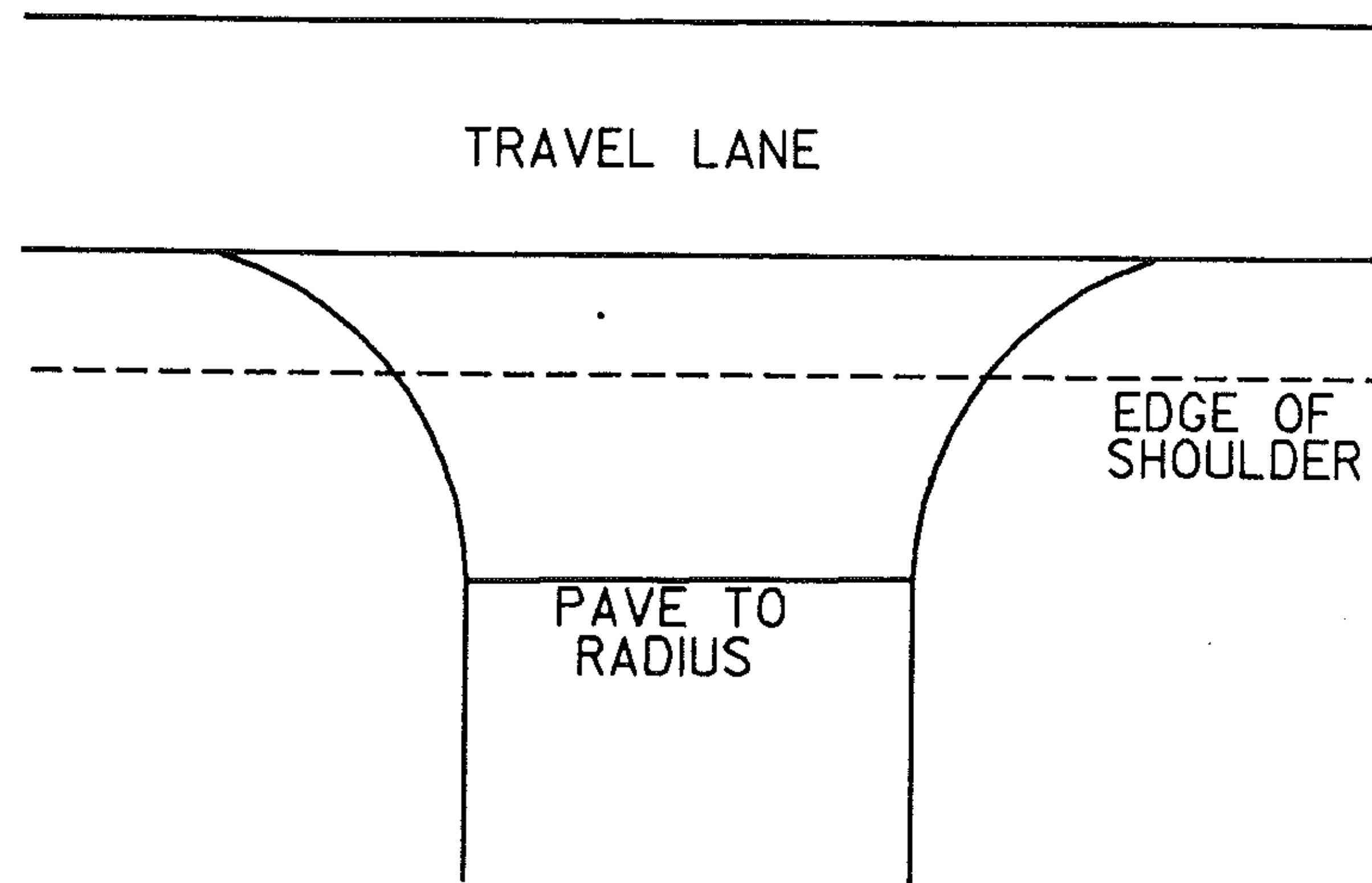


US 7 COLCHESTER MM 6.853 ~ MM 6.960  
MILTON MM 0.000 ~ MM 1.446

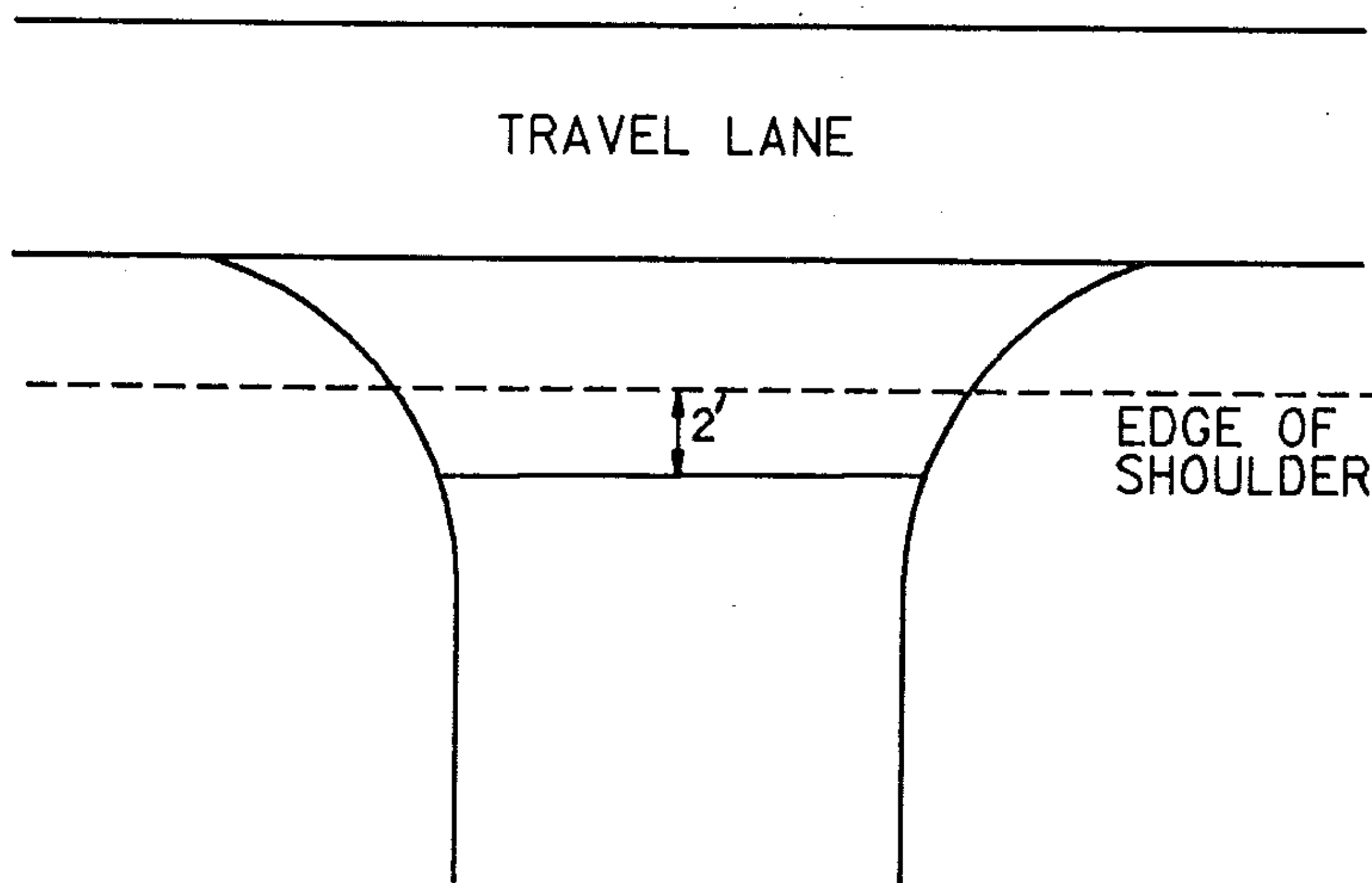
$v = 50 \text{ mph}$

PAVING LIMITS FOR DRIVES & TOWN ROADS

PAVING LIMITS FOR TOWN ROADS



PAVING LIMITS FOR DRIVES







MAILBOX LOCATIONS

MM	TYPE	RT.	LT.
0.07	SINGLE	RT.	
0.21	DOUBLE	RT.	
0.43	SINGLE	RT.	
0.58	SINGLE		LT.
0.72	DOUBLE		LT.
0.79	SINGLE		LT.
0.85	DOUBLE	RT.	
0.91	DOUBLE	RT.	
0.99	SINGLE	RT.	
1.02	SINGLE	RT.	
1.21	SINGLE	RT.	
1.26	SINGLE	RT.	
1.37	SINGLE	RT.	
1.40	DOUBLE	RT.	
1.44	DOUBLE	RT.	

PROJECT COLCHESTER - MILTON

NO. RS 0285(11)

SHEET 8 OF 28 SHEETS

TRAFFIC SIGN SUMMARY SHEET

1986

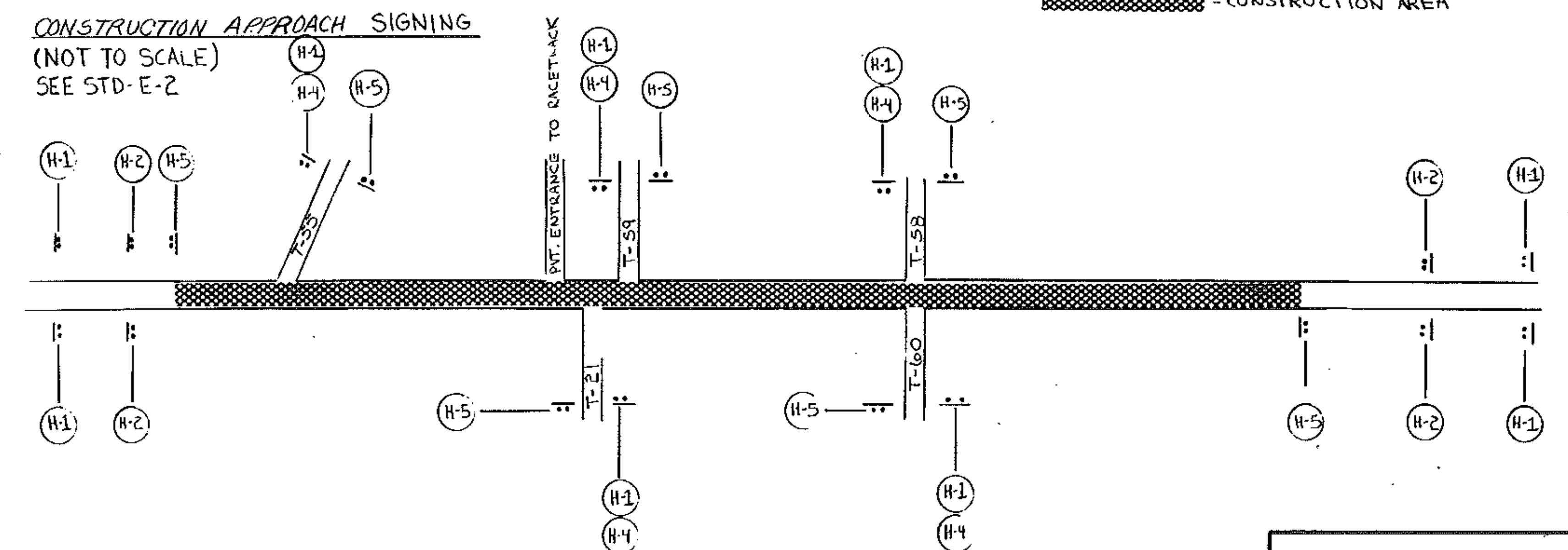
MILEMARKER, STATION, OR SIGN NUMBER	SIGN LEGEND	SIGN DIMENSIONS	EXISTING SIGNS			NEW AND SALVAGED SIGNS				EXISTING POSTS				NEW SIGN POSTS											REMARKS	FOR SIGN DETAIL SHEET								
			TO BE SALV.	REMOVE	RETAIN	'A'	'B'	SALV. SIGN	SALV. T.S.	RET.	DRILL	REM.	SALV.	NUMBER OF POSTS	FLANGED CHANNEL (LB./FT.)			TUBULAR ALUMINUM				TUBULAR STEEL				W SHAPED STEEL			PLAN SHEET NUMBER	STD. SHEET NUMBER				
															2.0	2.5	3.0	3.0"Ø	3.0"□	4.0"Ø	4.0"ØM.	3"Ø	3.5"Ø	4.0"Ø		5.0"Ø	POST SIZE	WEIGHT			FTG. SIZE			
0.91 RT.	LEGAL LOAD LIMIT 24,000 POUNDS	24' x 30"				5							1				X															TS # 505	E-15A	
0.94 LT.	LEGAL LOAD LIMIT 24,000 POUNDS	24' x 30"				5							1				X																TS # 505	E-15A
0.94 RT.	STOP	30" x 30"				6.25							1				X																	E-15C
1.20 RT.	HIDDEN SPOTS (W/IT)	30" x 30"				6.25																									SEE SHEET 505	E-19A		
	SHOULDER WARNINGS	36" x 36"				9						X																						E-19A
TOTALS			EA.	SF.	SF.	EA.	SF.					126					126																	

FINAL POST LENGTHS ARE TO BE DETERMINED IN THE FIELD. POST SIZES ARE COMPUTED BASED ON INFORMATION FURNISHED ON THE STANDARD SHEETS AND THE DESIGN DIVISION'S 'SIGN POST DESIGN MANUAL'.

TRAFFIC ITEM SUMMARY					
ITEM NO.	ITEM	UNIT	QUANTITY	RNDG.	TOTAL
646.31	DURABLE 4" YELLOW LINE	LF	3700	-	3700
646.35	DURABLE 8" YELLOW LINE	LF	454	12	454
646.42	DURABLE ALGEBRA MARKING	EA	3	-	3
646.44	DURABLE LETTERS IN WHITE PAINT	EA	12	-	12
646.50	TEMPORARY 4" WHITE LINE	LF	16,675	25	16,700
646.51	TEMPORARY 4" YELLOW LINE	LF	31,000	-	31,000
646.30	DURABLE 4" WHITE LINE	LF	275	25	300
675.20	TRAFFIC SIGNS, TYPE A	SF	131.63	3.37	135
675.30	FLANGED CHANNEL SIGN POSTS	LB	751	49	800
675.50	REMOVING SIGNS	LA	20	-	20

NOTES AND DETAILS

CONSTRUCTION APPROACH SIGNING (NOT TO SCALE) SEE STD-E-2



▨ = CONSTRUCTION AREA

ADDITIONAL ON-PROJECT CONSTRUCTION SIGNING WILL BE REQUIRED AS PER APPROPRIATE STANDARD SHEETS

<p>TRAFFIC SIGN SUMMARY SHEET</p>	PREPARED BY: <u>EB</u> DATE <u>5/87</u>
	CHECKED BY: <u>LSW</u> DATE <u>5/87</u>
	DESIGN SUPERVISOR: <u>DAR</u> DATE <u>5/87</u>
	PROJ. COLCHESTER-MILTON <u>RS 0285(11)</u>
	TRAFFIC SHEET NO. <u>504</u> OF <u>505</u> SHEET <u>12</u> OF <u>28</u> SHEETS

DURABLE 4" YELLOW LINE  
 160+00 E DBL. YEL. - 165+00 DBL. YEL. LT.+RT.  
 (AS SHOWN) \*

DURABLE 8" YELLOW LINE (DIAGS.)

DURABLE ARROW MARKING

DURABLE LETTER IN WORD MARKING

TEMPORARY 4" WHITE LINE

TEMPORARY 4" YELLOW LINE

DURABLE 4" WHITE LINE

165+00 DBL. YEL. LT.+RT. - 167+40 DBL. YEL. E  
 (AS SHOWN) \*

PAINTED ISLAND (AS SHOWN)  
 (SEE DETAIL T.S. #505)

165+17 E \*  
 166+25 E \*  
 167+37 E \*

165+05 E \*  
 166+13 E \*  
 167+25 E \*

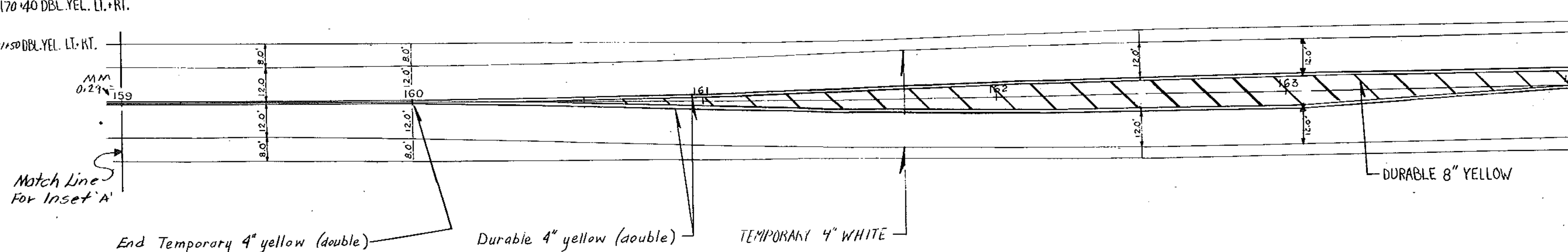
159+00 RT. - 170+41 RT. 159+00 LT. - 167+45 LT.  
 170+80 RT. - 172+00 RT. 168+40 LT. - 172+00 LT.  
 165+00, 6' RT. - 167+45, 6' RT. (LANE LINE)  
 167+45 - 167+75, 50' RADIUS (LANE LINE)

159+00 E - 160+00 E  
 165+00 E - 167+43 E  
 171+50 E - 172+00 E

165+00 ~ 167+45, 6' RT. (LANE LINE)  
 167+45 ~ 167+75, 50' R. (LANE LINE)

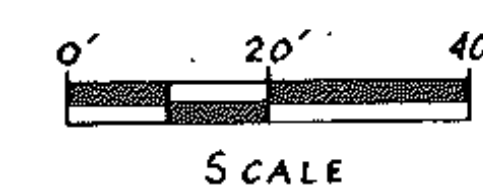
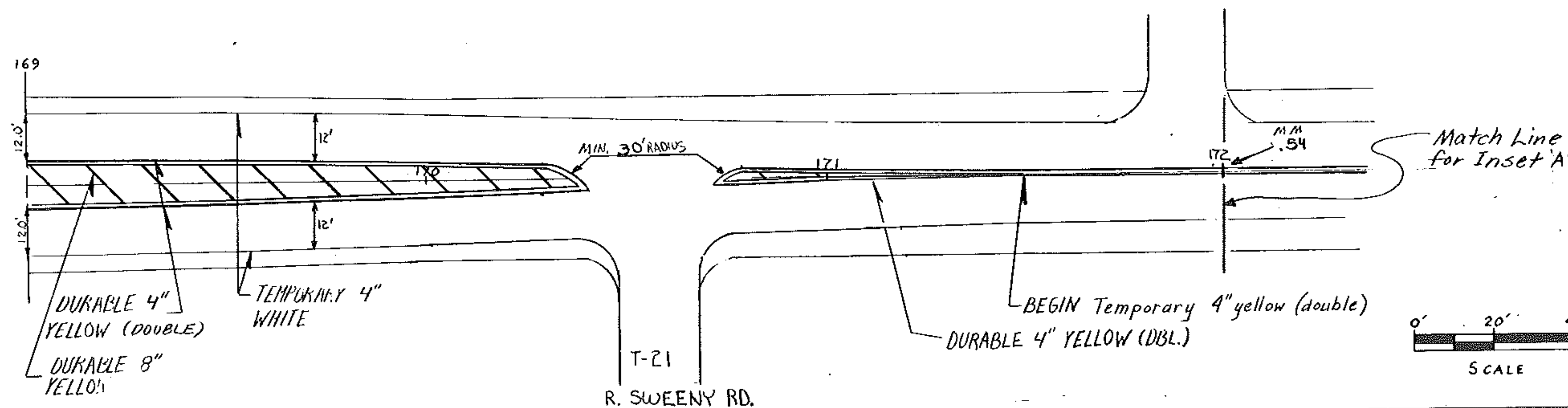
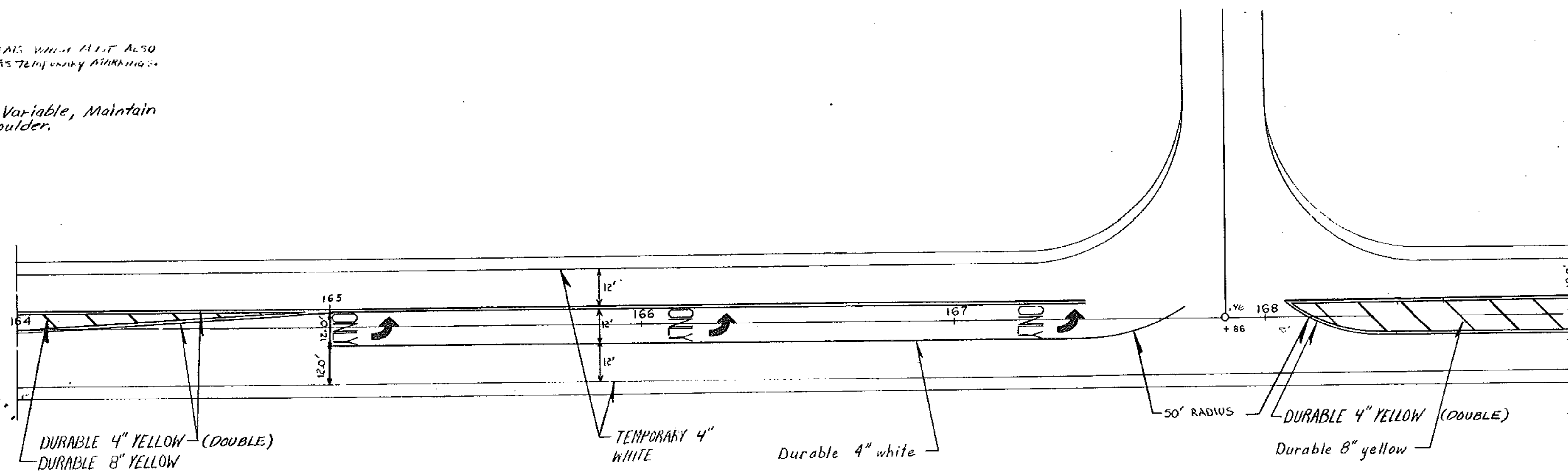
168+07 DBL. YEL. LT.+RT. - 170+40 DBL. YEL. LT.+RT.  
 (AS SHOWN) \*

170+70 DBL. YEL. LT.+RT. - 171+50 DBL. YEL. LT.+RT.  
 (AS SHOWN) \*



\* INDICATES PAVEMENT MARKING PLANS WHICH MUST ALSO  
 BE APPLIED TO THE PAISE COURSE AS TEMPORARY MARKING.

NOTE:  
 Painted Island Width Variable, Maintain  
 12' Lanes and Min. 4" Shoulder.



"INSET A"

PAVEMENT  
 MARKING  
 DETAIL SHEET

PREPARED BY LSW DATE 5/87  
 CHECKED BY TB DATE 5/87  
 DESIGN SUPERVISOR DBR DATE 5/87  
 PROJ. COLCHESTER-MILTON  
RS 0285(11)  
 TRAFFIC SHEET NO. 502 OF 505  
 SHEET 10 OF 128 SHEETS

TRAFFIC SIGN SUMMARY SHEET

1986

MILEMARKER, STATION, SIGN NUMBER	SIGN LEGEND	SIGN DIMENSIONS	EXISTING SIGNS			NEW AND SALVAGED SIGNS				EXISTING POSTS				NEW SIGN POSTS												REMARKS	FOR SIGN DETAIL SHEET					
			TO BE SALV.	REMOVE	RETAIN	'A'	'B'	SALV. SIGN	SALV. I.S.	RET.	D.F.L.L.	REM.	SALV.	NUMBER OF POSTS	FLANGED CHANNEL LB./FT.			TUBULAR ALUMINUM				TUBULAR STEEL					W SHAPED STEEL				PLAN SHEET NUMBER	STD. SHEET NUMBER
															2.0	2.5	3.0	3.0"φ	3.0"□	4.0"φ	4.0"φM.	3"φ	3.5"φ	4.0"φ	5.0"φ		POST SIZE	WEIGHT	FTG. SIZE			
6.81 LT.		36" x 36"				9							1			X															TS # 505	
6.853 RT.		18" x 18"				2.25																									E-19A	
6.92 RT.		30" x 30"				6.25				X																					E-19B	
6.92+ LT.		18" x 24"				3	3						2			X															E-19	
		18" x 24"				3																									E-19	
6.94 LT.		36" x 36"				9				X																					E-19A	
7.02 LT.		18" x 24"				3	3						2			X															E-19	
		18" x 24"				3																									E-19	
7.01 LT.		30" x 30"				6.25							1			X															E-15C	
7.00 RT.		60" x 7 1/2"				3	3			X																					SEE SHT. 505	
7.02 LT.		24" x 30"				5							1			X															TS # 505	E-15A
7.10 LT.		18" x 24"				3	3						2			X															E-19	
		18" x 24"				3																									E-19	
7.28 LT.		30" x 30"				6.25							1			X															TS # 505	E-15
7.49 RT.		24" x 30"				5							1			X															TS # 505	E-15A
7.50 LT.		30" x 30"				6.25							1			X															E-15C	
7.39 RT.		30" x 30"				6.25																									E-15	
7.51 RT.		30" x 30"				6.25							1			X															E-15C	
7.55 LT.		24" x 30"				5							1			X															TS # 505	E-15A
7.91 LT.		30" x 30"				6.25				X																					E-15C	
TOTALS						EA.	SF.	SF.	EA.	SF.						633																

FINAL POST LENGTHS ARE TO BE DETERMINED IN THE FIELD. POST SIZES ARE COMPUTED BASED ON INFORMATION FURNISHED ON THE STANDARD SHEETS AND THE DESIGN DIVISION'S 'SIGN POST DESIGN MANUAL'.

PREPARED BY EB DATE 5/87  
 CHECKED BY LSW DATE 5/87  
 DESIGN SUPERVISOR DAR DATE 5/87  
 PROJ. COLCHESTER - MILTON  
 R50285 (11)  
 TRAFFIC SHEET NO. 503 OF 505  
 SHEET 11 OF 28 SHEETS

TRAFFIC SIGN SUMMARY SHEET

TRAFFIC SIGN SUMMARY SHEET

1986

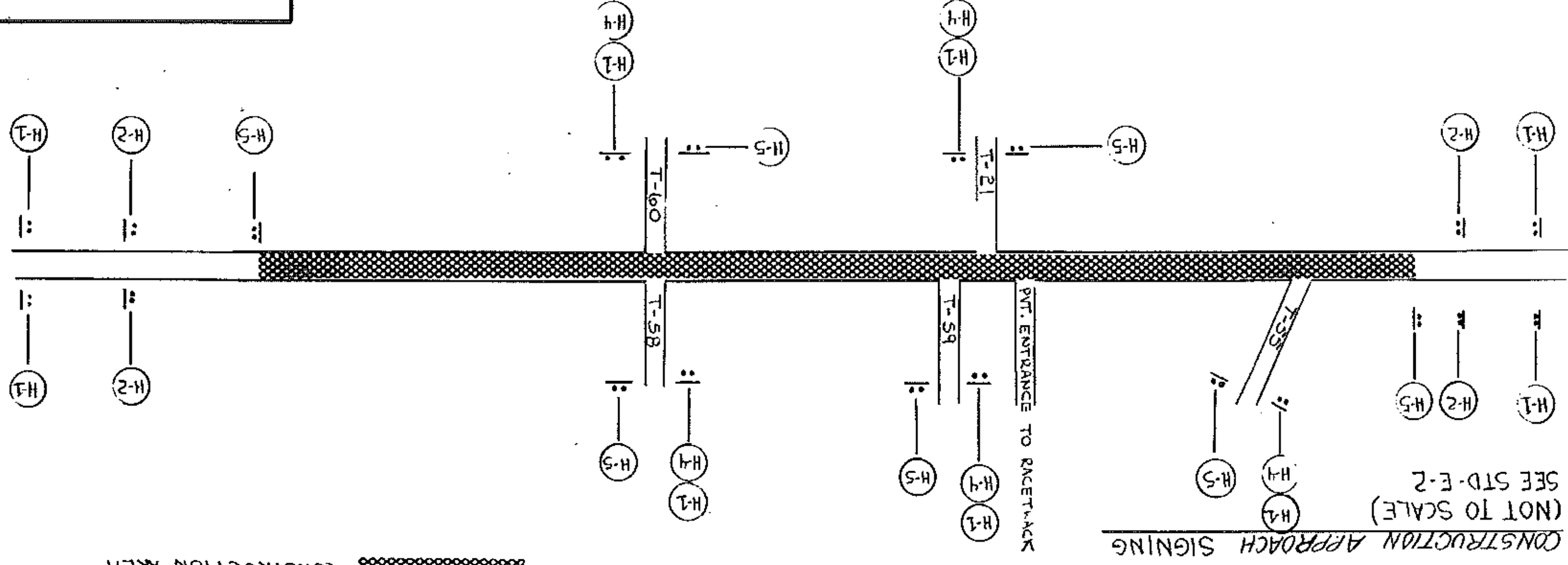
MILEMARKER, OR STATION NUMBER	SIGN LEGEND	SIGN DIMENSIONS	EXISTING SIGNS			NEW AND SALVAGED SIGNS			EXISTING POSTS			REMARKS
			TO BE SALV.	REMOVE	RETAIN	'A'	'B'	SALV. SIGN	SALV. T.S.	RET.	DRILL	
091 RT	LEAL LWD LIMIT 24,000 POUNDS	24" x 30"	5			1						
094 LT	LEAL LWD LIMIT 24,000 POUNDS	24" x 30"	5			1						
094 RT	STOP	30" x 30"	6.25			1						
122 RT	HIDDEN LETTERS	30" x 30"	6.25									SEE SHEET E-194 505
E-194	SHIELD MARKING	36" x 56"	9									
TOTALS			EA.	SF.	SF.	SF.	EA.	SF.				
DIVISION'S SIGN POST DESIGN MANUAL. FURNISHED ON THE STANDARD SHEETS AND THE DESIGN FIELD. POST SIZES ARE COMPUTED BASED ON INFORMATION			EA.	SF.	SF.	SF.	EA.	SF.				
FINAL POST LENGTHS ARE TO BE DETERMINED IN THE			EA.	SF.	SF.	SF.	EA.	SF.				

TRAFFIC ITEM SUMMARY

ITEM NO.	ITEM	UNIT	QUANTITY	RNDG.	TOTAL
646.31	Durable 4" Yellow Line	LF	3700	-	3700
646.35	Durable 8" Yellow Line	LF	459	12	459
646.42	Durable Arrow Marking	EA	3	-	3
646.44	Durable Letts. in Word Marking	EA	12	-	12
646.50	Temporary 4" White Line	LF	16,675	25	16,700
646.51	Temporary 4" Yellow Line	LF	31,000	-	31,000
646.30	Durable 4" White Line	LF	275	25	300
675.20	Knife Signs, Type A	SF	131.63	3.37	135
675.30	Flanged Arrow Sign L.T.	LB	751	49	800
675.50	Removal Signs	LA	20	-	20
TOTAL					

NOTES AND DETAILS

CONSTRUCTION APPROACH SIGNING (NOT TO SCALE) SEE STD-E-2

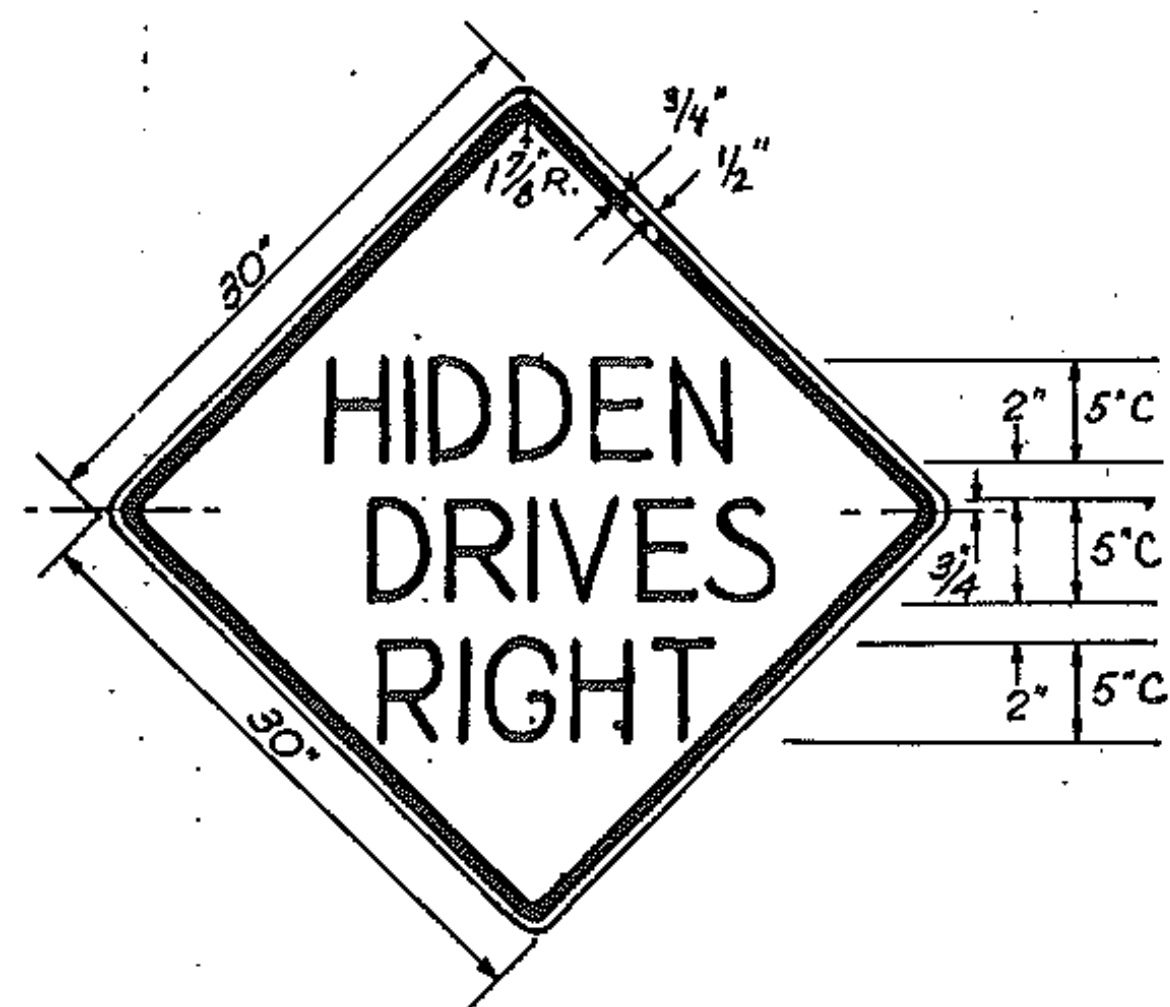


CONSTRUCTION AREA

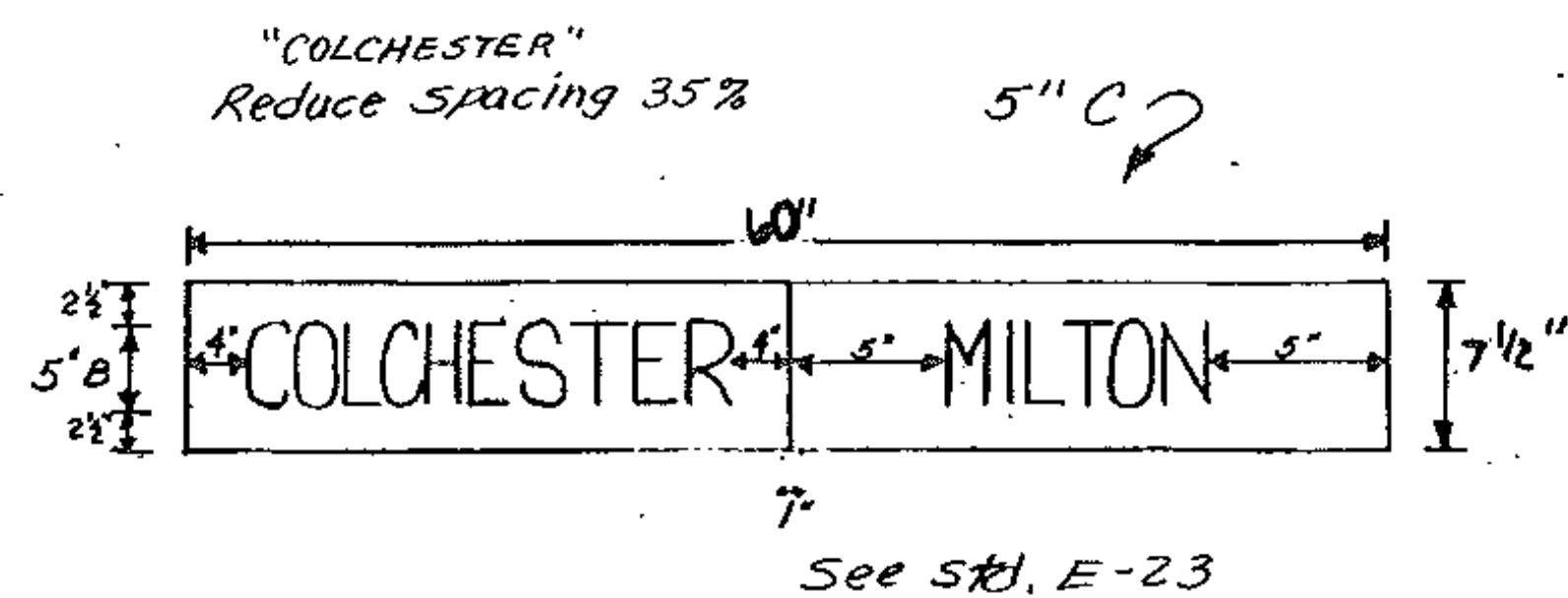
ADDITIONAL ON-PROJECT BE REQUIRED AS PER CONSTRUCTION SIGNING WILL APPROPRIATE STANDARD SHEETS

TRAFFIC SIGN SUMMARY SHEET

PREPARED BY EB DATE 5/87  
 CHECKED BY LSW DATE 5/87  
 DESIGN SUPERVISOR BAR  
 PROJ. COLCHESTER-MILTON  
 R5 0285(11)  
 TRAFFIC SIGN NO. 504 OF 505  
 SHEET 12 OF 28 SHEETS

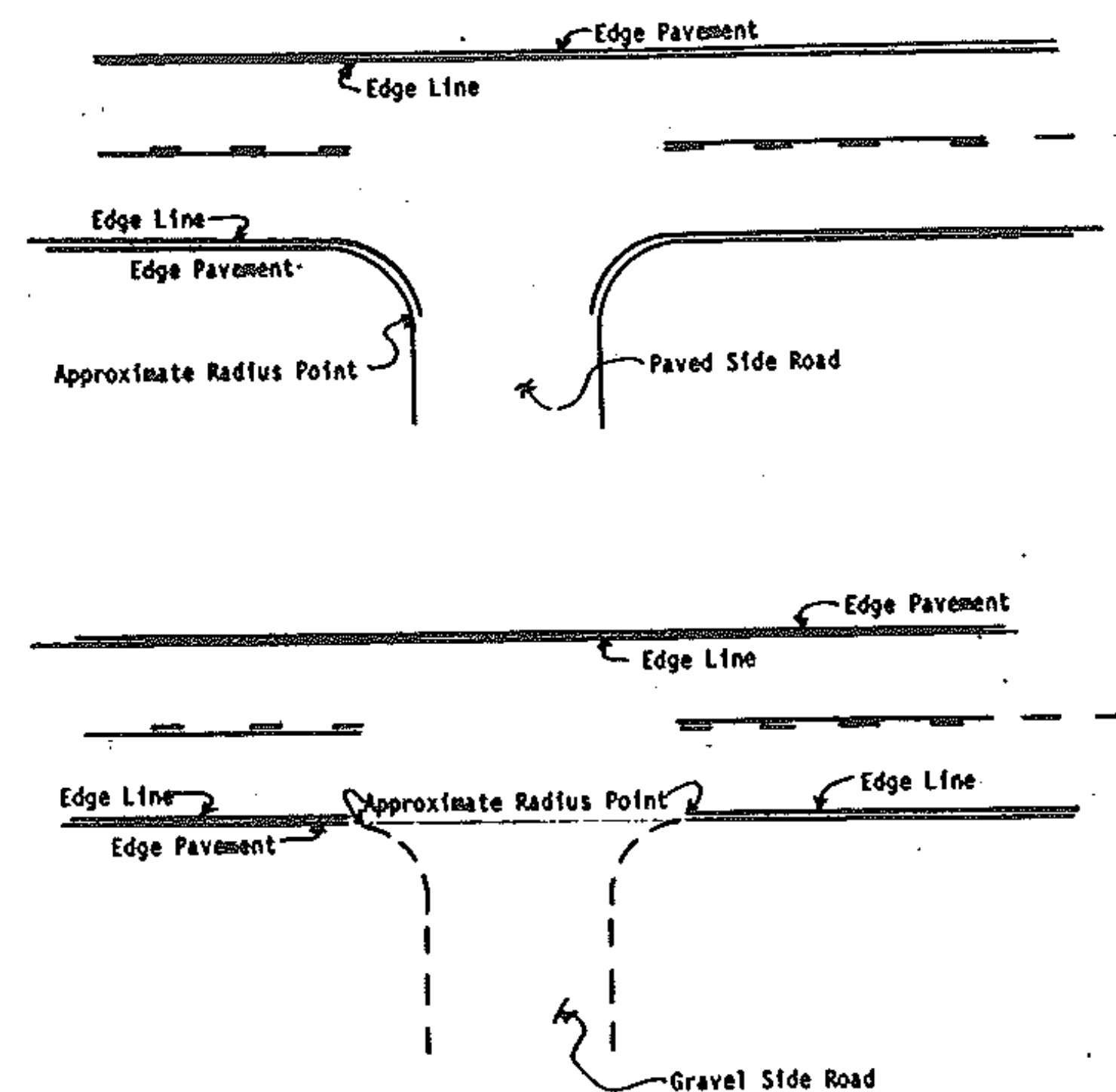


See Std. E-19A



Guideline for Edgeline Application on 2-Lane, 2-Way Highways

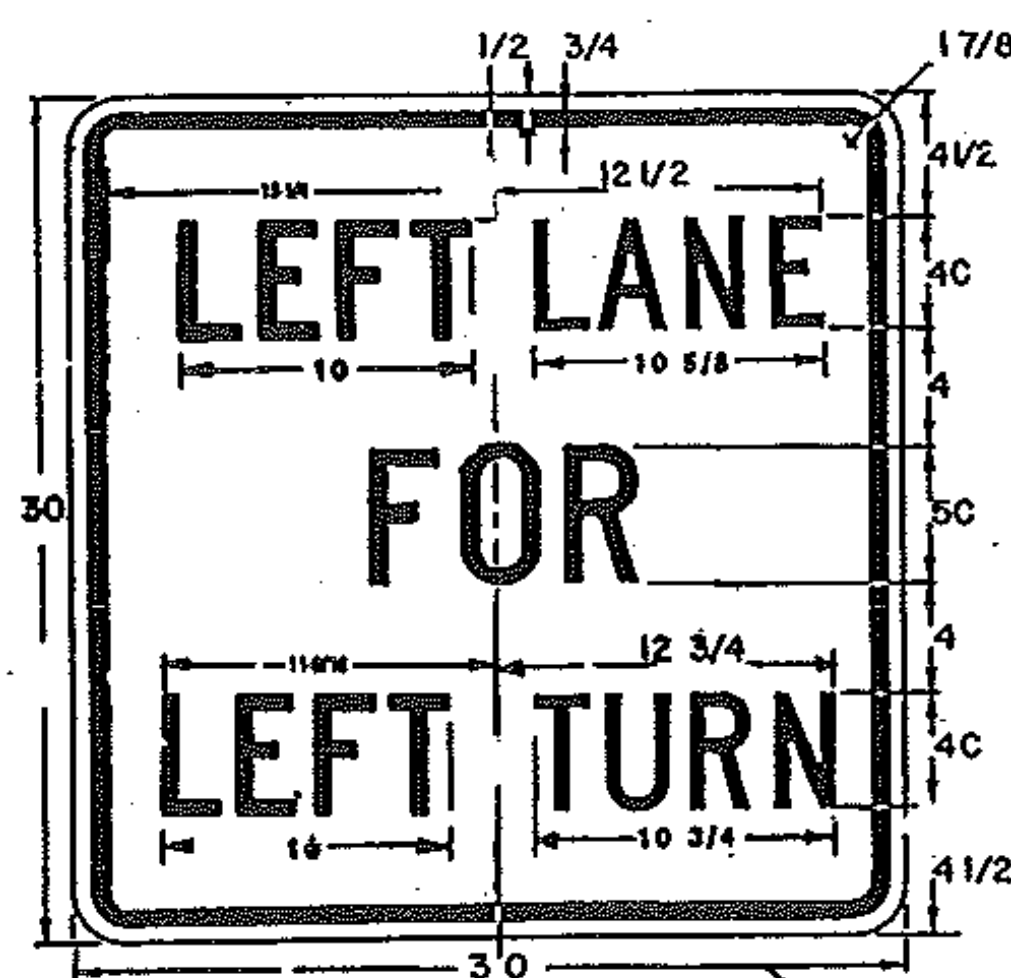
Edgelines shall be applied to the right and left of centerline on highways that have a traffic volume in excess of 1000 vehicles per day. Treatment at intersecting side roads shall be as shown below:



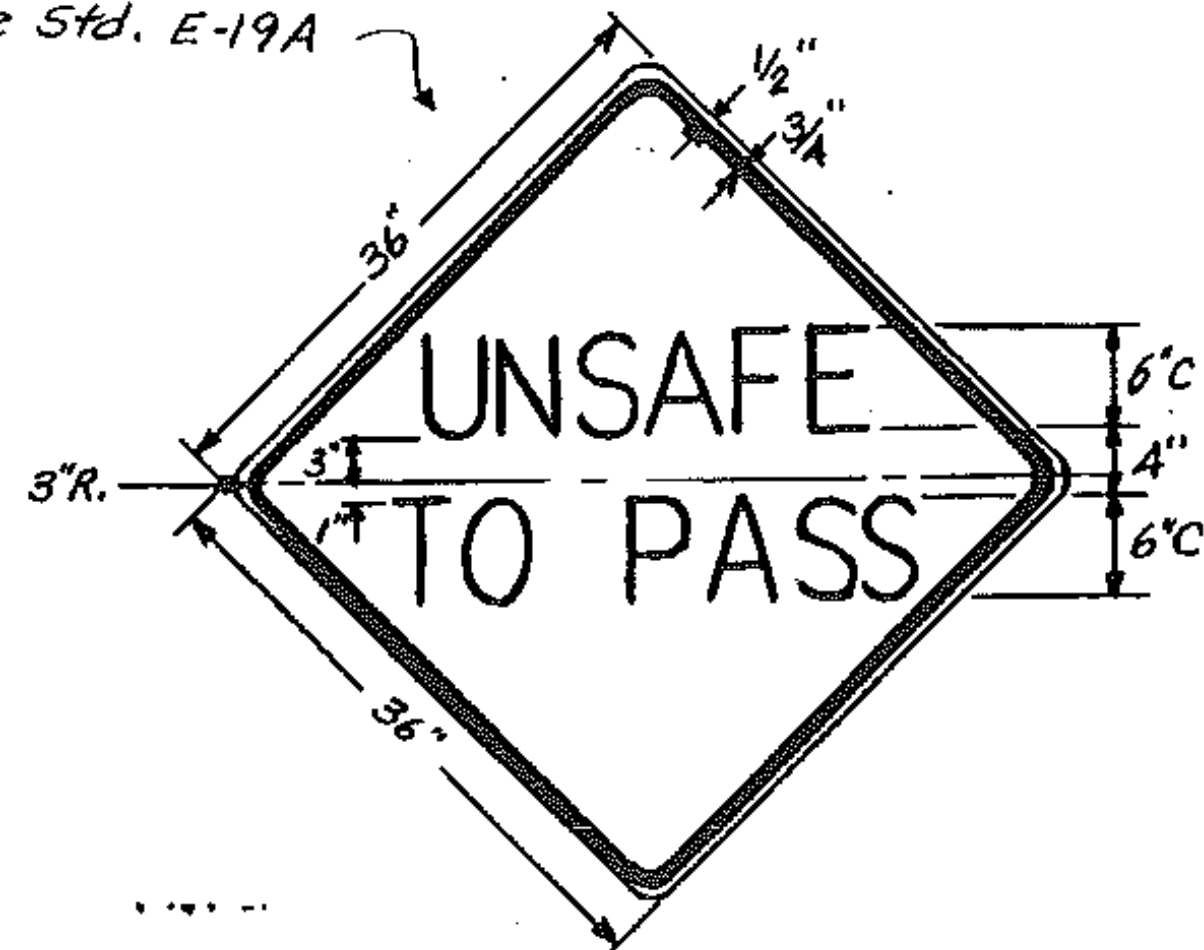
GUIDELINES FOR MINIMUM INTERIM PAVEMENT MARKINGS IN CONSTRUCTION ZONES

- A. CENTERLINE AND GORE AREA MARKINGS SHALL BE APPLIED AT THE END OF EACH WORKING DAY. THE FOLLOWING LAYOUT REQUIREMENTS SHALL BE MET:  
**NO PASSING BARRIER**  
 SOLID STRIPES.  
**DASHED LINE**  
 10-FOOT SOLID LINE WITH 30-FOOT GAP.  
**GORE AREA**  
 (GORE AREAS TO INCLUDE 8' CHANNELIZING LINE AND DASHED LINE) PER STANDARD SHEET E-50
- B. **EDGE LINES**  
 WHEN SPECIFIED, EDGE LINES ARE NOT REQUIRED UNTIL COMPLETION OF THE PROJECT. ON INTERSTATE PROJECTS, TEMPORARY EDGE LINES SHOULD BE APPLIED WHERE TRAFFIC VOLUMES AND SPEEDS ARE HIGH AND DELAY OF SEVERAL DAYS IS ANTICIPATED.
- C. TEMPORARY MARKINGS MAY CONSIST OF PAINT, TAPE OR RAISED PAVEMENT MARKERS (RPM'S). THE TAPE SHALL BE A RETRO-REFLECTIVE FILM ON A CONFORMABLE METALLIC BACKING THAT CAN BE PAVED OVER. TAPE MAY BE USED ON THE FINAL SURFACE COURSE IF IT WILL NOT INTERFERE WITH THE FINAL MARKING APPLICATION. TEMPORARY TAPE MARKINGS WILL BE OFFSET AND REMOVED WHEN PROJECT IS FINISHED AND FINAL CENTERLINE PAINTED. THE TAPE SHALL BE THE TYPE THAT IS REMOVABLE INTACT AND NOT SEPERATE AT ANY TIME. THE RPM'S SHALL HAVE A SELF-ADHESIVE BACKING EASILY REMOVED BEFORE PAVING AND SHALL CONFORM TO THE FOLLOWING LAYOUT PATTERN:  
**NO PASSING BARRIER**  
 NO RPM'S ALLOWED.  
**DASHED LINE**  
 FOUR RETRO-REFLECTIVE RPM'S ON 3 1/2 FOOT CENTERS WITH A 30' GAP.  
**SOLID LINE - EDGE LINES**  
 INTERSTATE MEDIAN SIDE-RETRO-REFLECTIVE RPM'S ON 4 TO 5 FOOT CENTER. DRIVERS RIGHT SIDE-RPM'S NOT ALLOWED.
- D. WHEN PAINT IS USED FOR TEMPORARY MARKING, AN ALTERNATE MATERIAL SUCH AS TAPE OR RPM'S SHALL BE ON HAND IN THE EVENT RAIN PREVENTS THE PAINT APPLICATION FROM BEING COMPLETED. ALL PAINT SHALL BE REFLECTORIZED.
- E. PAYMENT FOR PAINT AND TAPE SHALL BE COMPUTED ON A LINEAR FOOT BASIS AS IF PAINT WAS USED. PAYMENT FOR THE RPM'S SHALL BE COMPUTED AS IF AN EQUIVALENT PAINT LINE WAS USED. (FOR EXAMPLE, DASHED LINE PAID AS 10 FEET OF PAINT, SOLID LINE PAID AS THE TOTAL DISTANCE COVERED WITH THE MARKERS).
- F. PRIOR TO ACCEPTANCE, THE PAVEMENT MARKINGS SHALL BE COMPLETED FOR THE ENTIRE PROJECT BY THE CONTRACTOR AS DETAILED ON THE PLANS OR DIRECTED BY THE RESIDENT ENGINEER.

REVISED 02/11/85

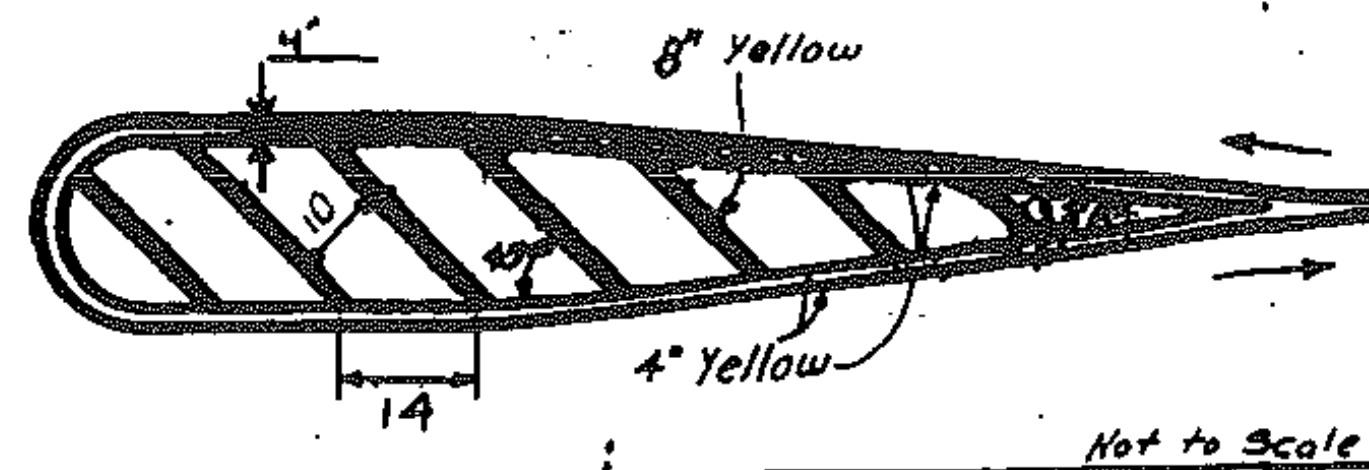


See Std. E-15

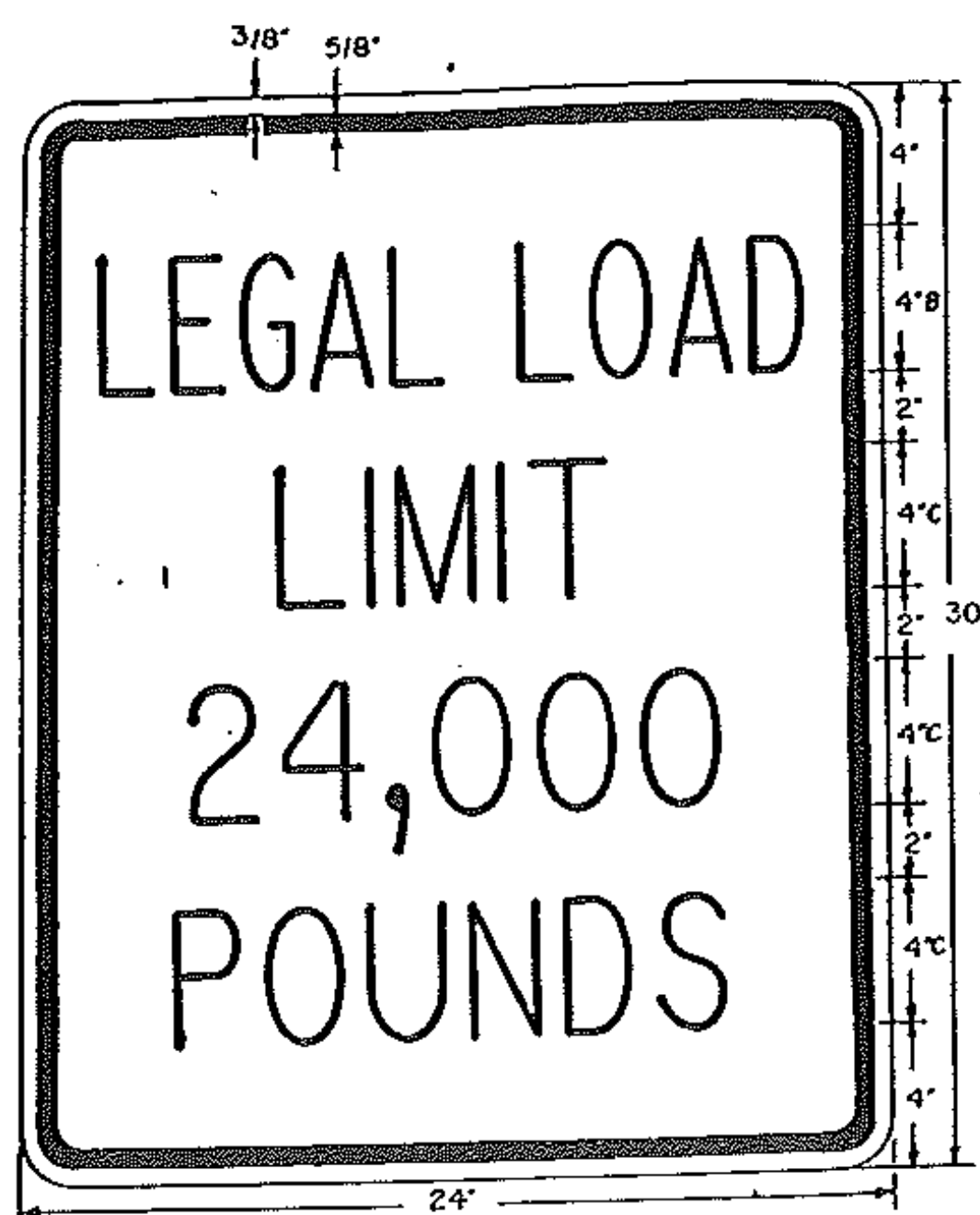
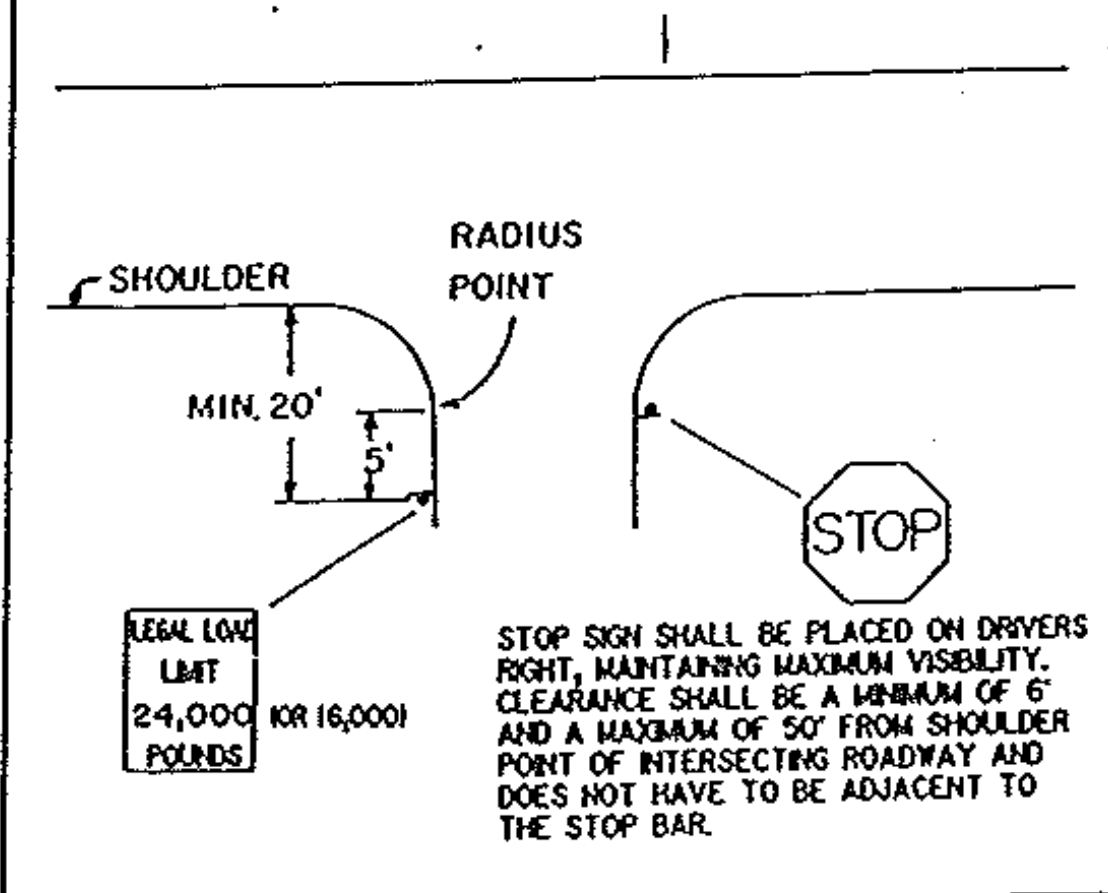


SPECIAL MARKING DETAILS

Painted Island Detail



SIGN PLACEMENT DETAIL



See Std. E-15A

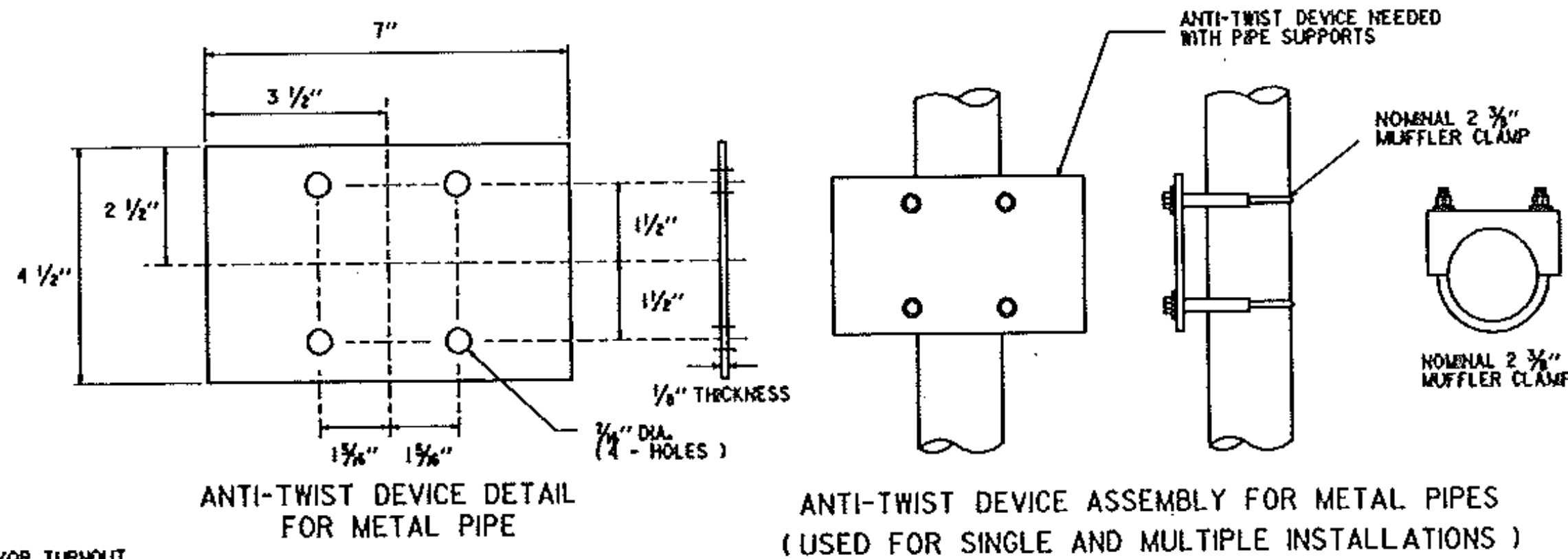
DETAIL SHEET

PREPARED BY LSG DATE 5/87  
 CHECKED BY JPB DATE 5/87  
 DESIGN SUPERVISOR DAR DATE 5/87  
 PROJ. COLCHESTER-MILTON  
 R5 02 85 (11)  
 TRAFFIC SHEET NO. 505 OF 525  
 SHEET 13 OF 28 SHEETS

**NOTES**

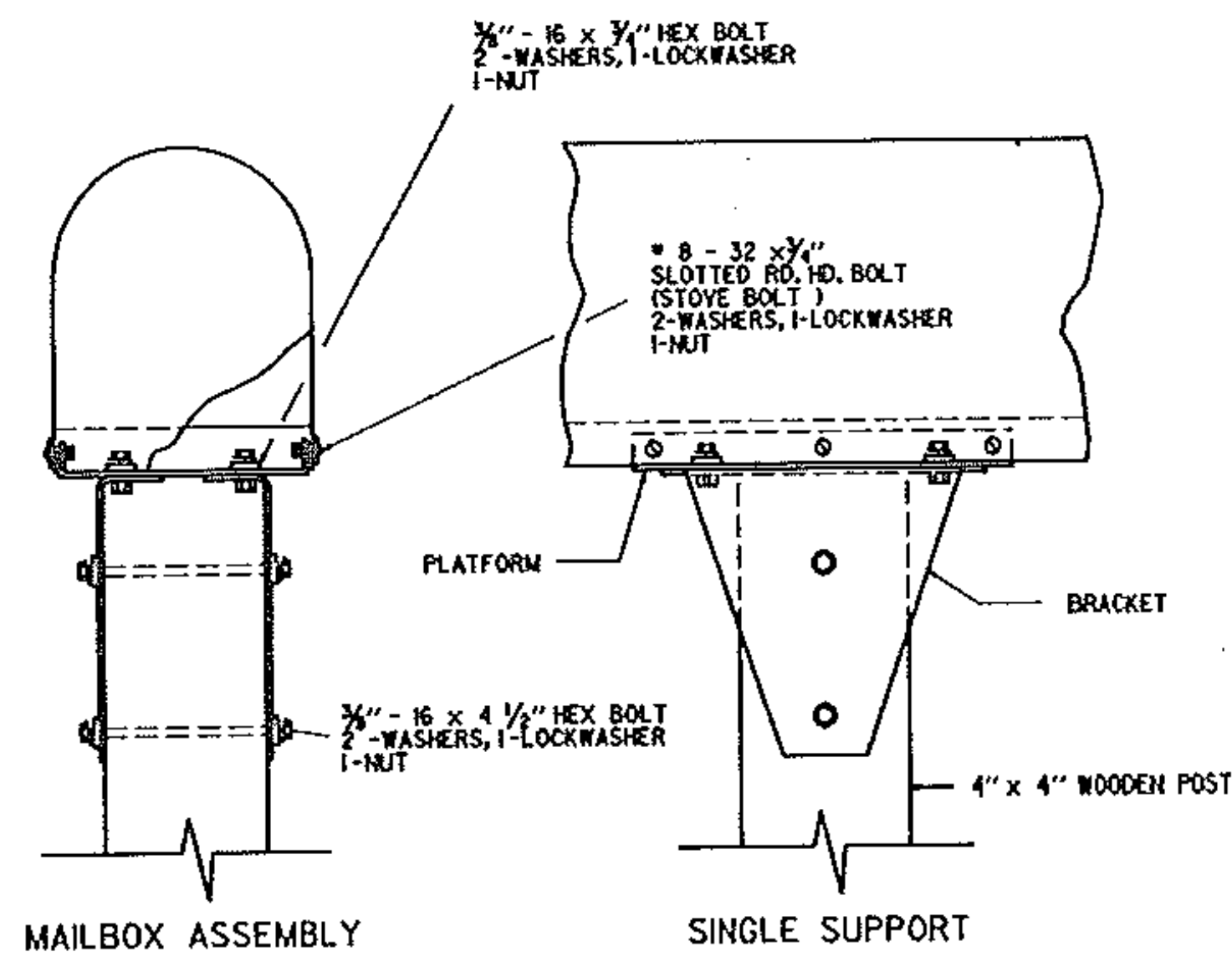
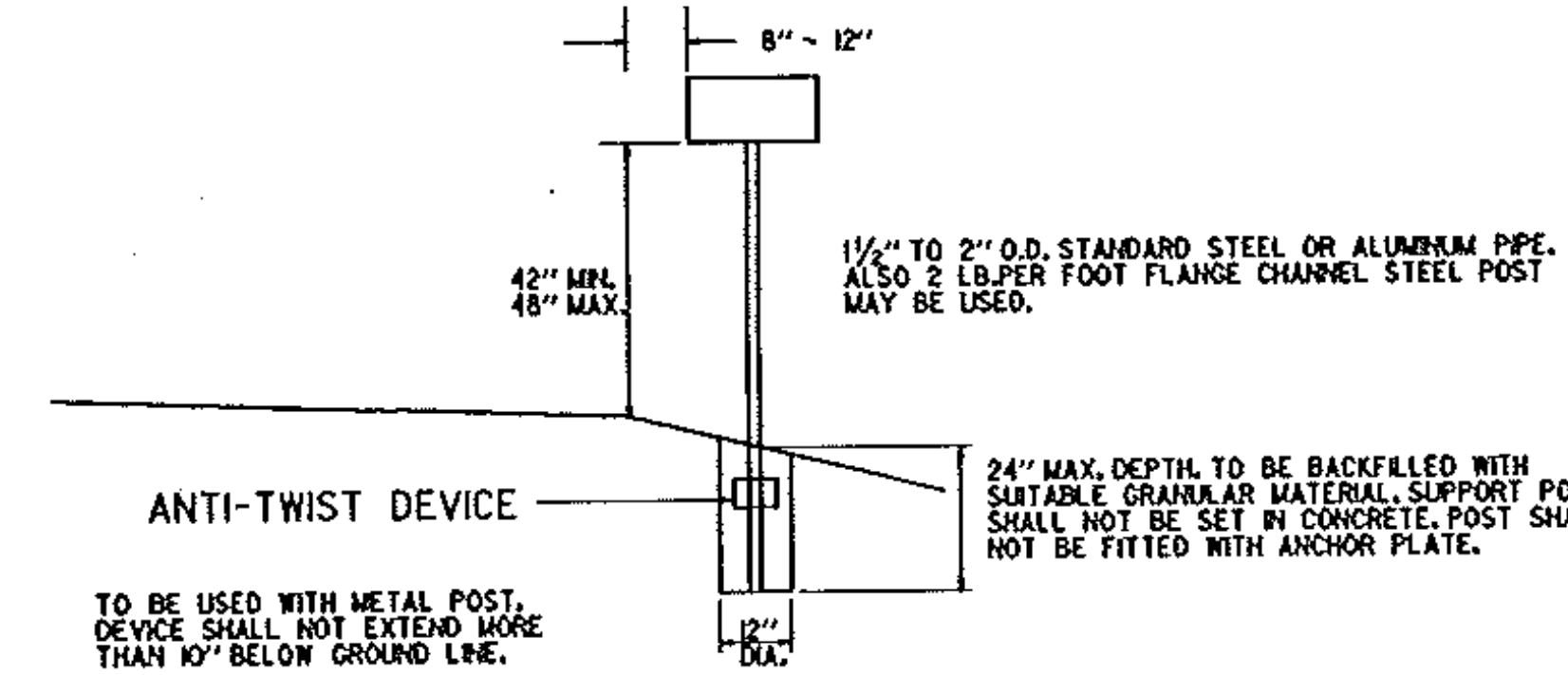
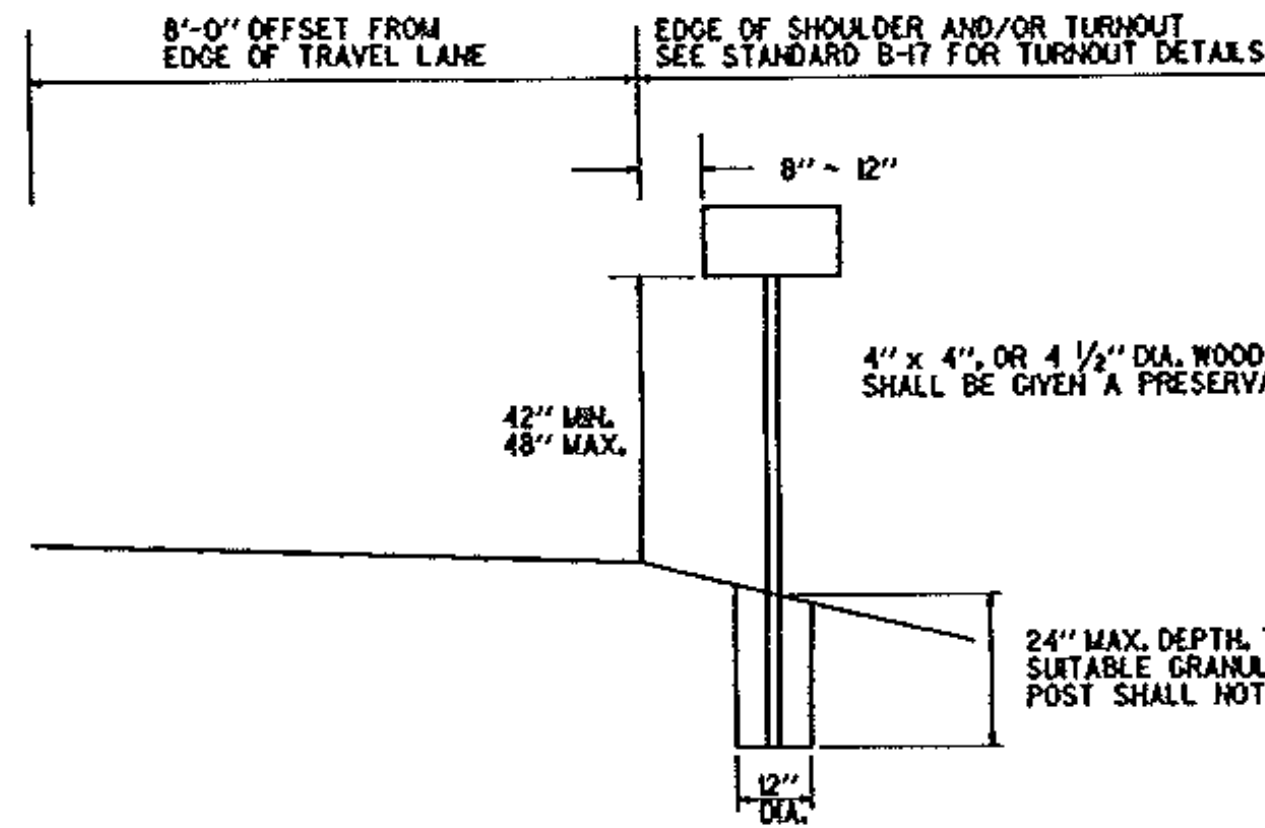
1. ONLY LIGHTWEIGHT MAILBOXES MADE OF LIGHT SHEET METAL OR PLASTIC SHALL BE USED. MAILBOXES SHALL MEET REQUIREMENTS AND APPROVAL OF THE U.S. POSTAL SERVICE.
2. AN ALTERNATE MAILBOX SUPPORT STRUCTURE DESIGN AND CONSTRUCTION MAY BE USED AS LONG AS PROVEN CRASHWORTHY AND MEETS GUIDELINES AS SET OUT IN AASHTO'S "GUIDE FOR ERECTING MAILBOXES ON HIGHWAYS". SUPPORT STRUCTURE SHALL ALSO MEET REQUIREMENTS OF THE U.S. POSTAL SERVICE.
3. MAILBOX TURNOUT SHALL MEET B-17 STANDARD AS SET OUT IN "STATE OF VERMONT DEPT. OF HIGHWAYS DESIGN STANDARDS FOR ROAD AND BRIDGE CONSTRUCTION".
4. IF THE STANDARD TURNOUT OFFSET CANNOT BE ATTAINED DUE TO RIGHT-OF-WAY CONSTRAINTS OR OTHER REASONS THE TURNOUT SHALL BE MODIFIED AS DIRECTED BY THE ENGINEER.

**SINGLE SUPPORT**



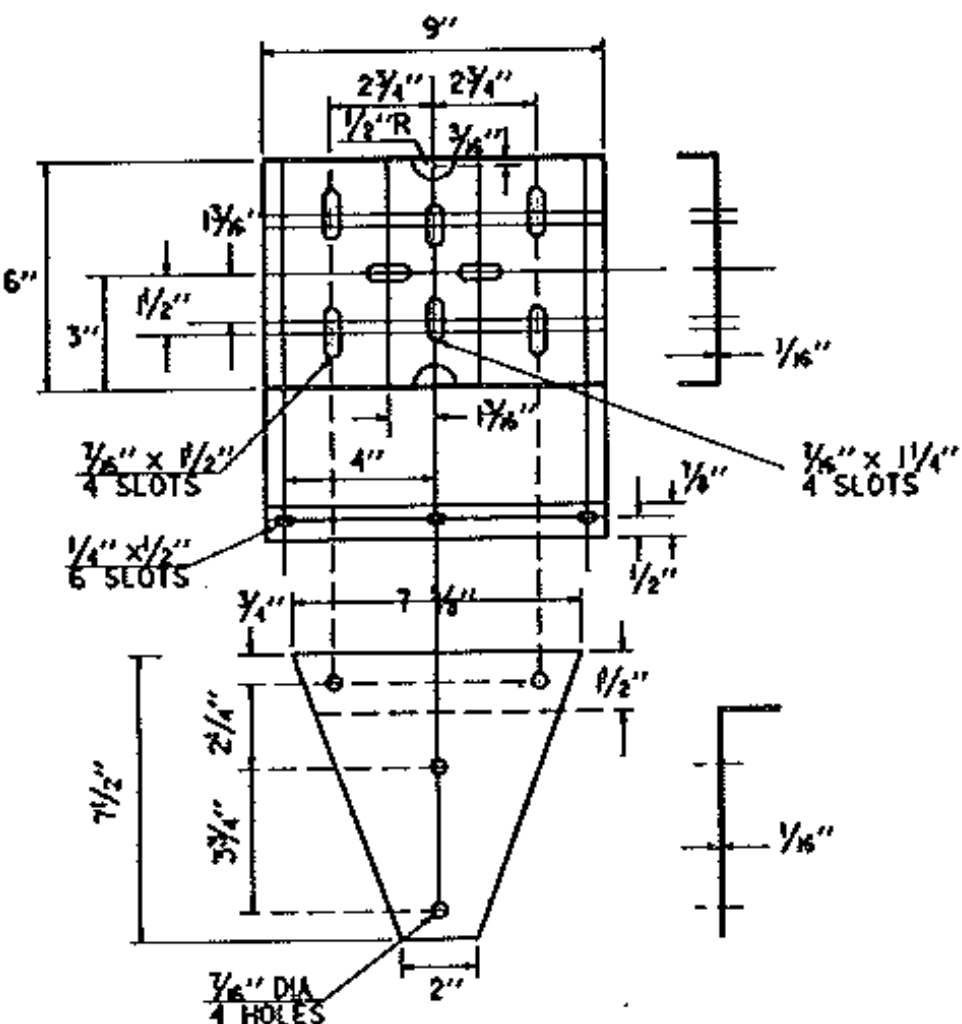
ANTI-TWIST DEVICE DETAIL FOR METAL PIPE

ANTI-TWIST DEVICE ASSEMBLY FOR METAL PIPES (USED FOR SINGLE AND MULTIPLE INSTALLATIONS)



MAILBOX ASSEMBLY

SINGLE SUPPORT



PLATFORM AND BRACKET DETAIL FOR METAL OR WOOD POSTS (USED FOR SINGLE AND MULTIPLE BOXES)

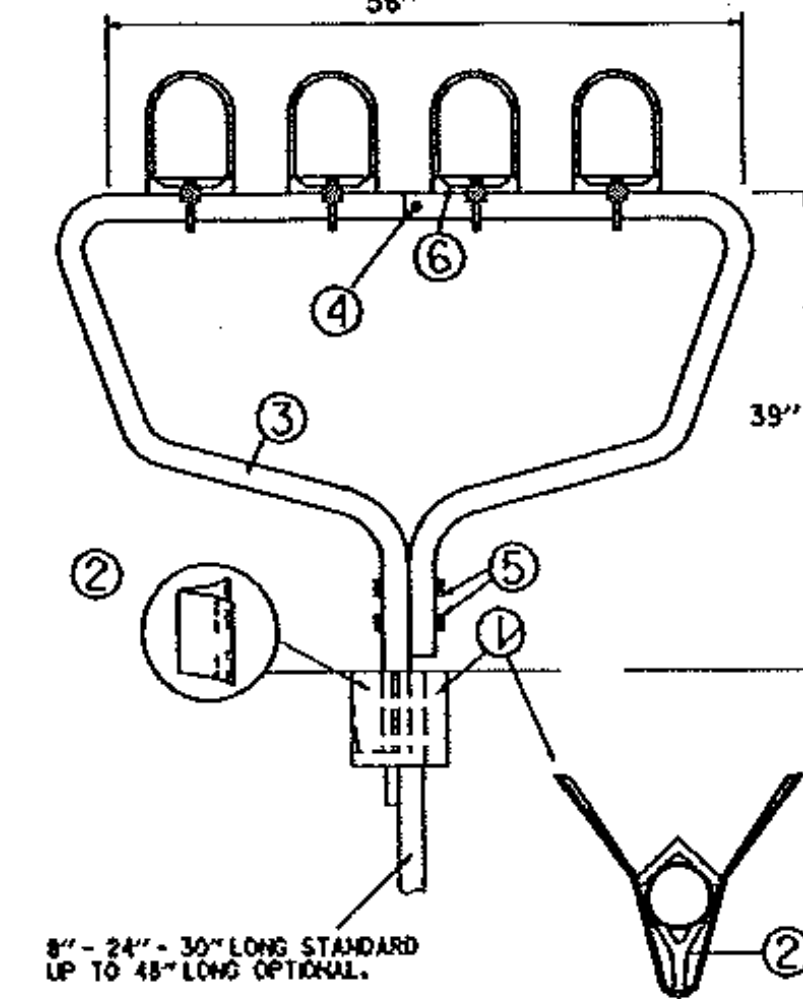
**MULTIPLE BOX INSTALLATION**

**TYPICAL INSTALLATION**

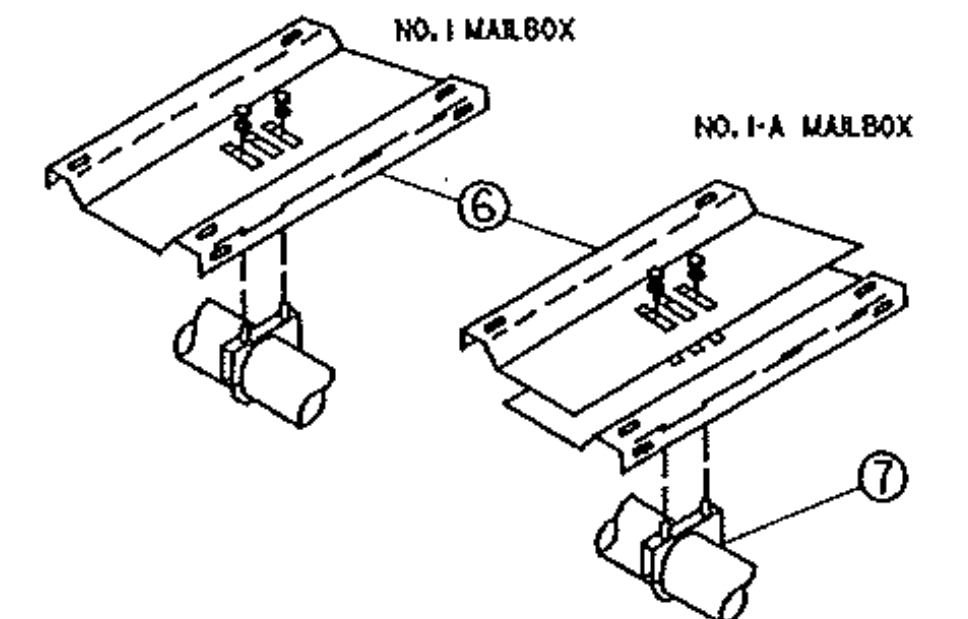
**SPECIFICATIONS**

1. V-LOC SOCKET: STABILIZER FIN IS 12 GAUGE HOT ROLLED CARBON SHEET STEEL, COMMERCIAL QUALITY. THE FIN IS FORMED FROM SHEET STEEL TO THE SHOWN CONFIGURATION. LEG ANGLE IS 3/8" x 2" x 2" ANGLE HR 1020 COMMERCIAL QUALITY. 1/4" TH. ANGLE AVAILABLE. WELDS ARE FOUR 1/4" x 1/2" FILLETS MINIMUM. FINISH IS DP-COATED WITH RUST INHIBITING PRIMER. FED. SPEC. TTP636. GALVANIZING AVAILABLE.
2. V-LOC WEDGE: THE V-LOC WEDGE IS STEEL TUBING MADE TO ASTM A-500, GRADE B SPECIFICATIONS, THEN PRESSED FORMED INTO WEDGE FORM.
3. TUBING: THE POST IS WELDED MECHANICAL TUBING PRODUCED TO ASTM GRADE A500, GRADE B. 2" O.D. x 0.65 WALL THICKNESS. GALVANIZED, FORMED AND PUNCHED, ASSEMBLED BEFORE SHIPMENT.
4. BRACKET: 1 3/8" x 2 1/2" HEX HEAD BOLT ZINC PLATED, 1 3/8" NYLON INSERT HEX LOCK NUT ZINC PLATED, 2 3/8" FLAT WASHERS ZINC PLATED.
5. 2 3/8" x 4 1/2" HEX BOLTS ZINC PLATED, 2 3/8" NYLON INSERT HEX LOCK NUTS ZINC PLATED, 4 3/8" FLAT WASHERS ZINC PLATED.

**ENERGY ABSORBING MAILBOX SUPPORT SYSTEM**

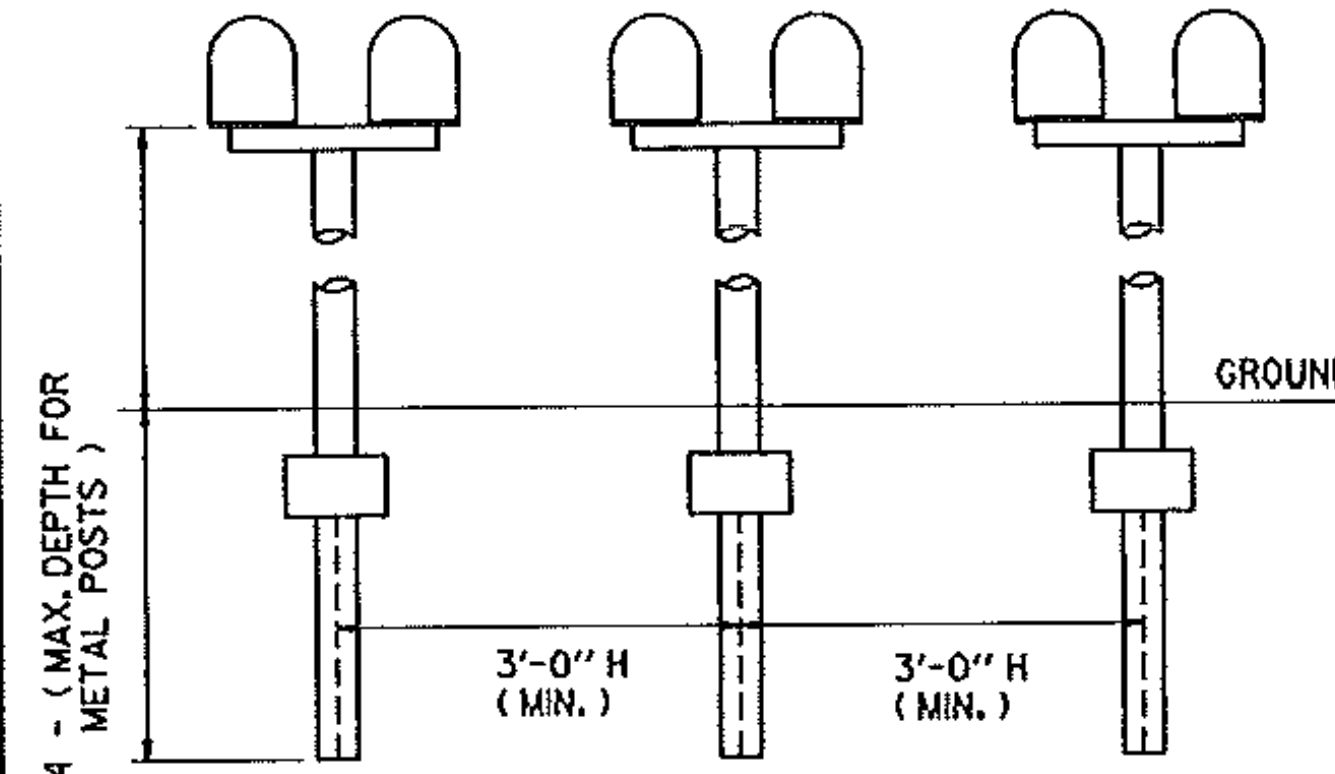


**ENERGY ABSORBING MAILBOX SUPPORT SYSTEM**



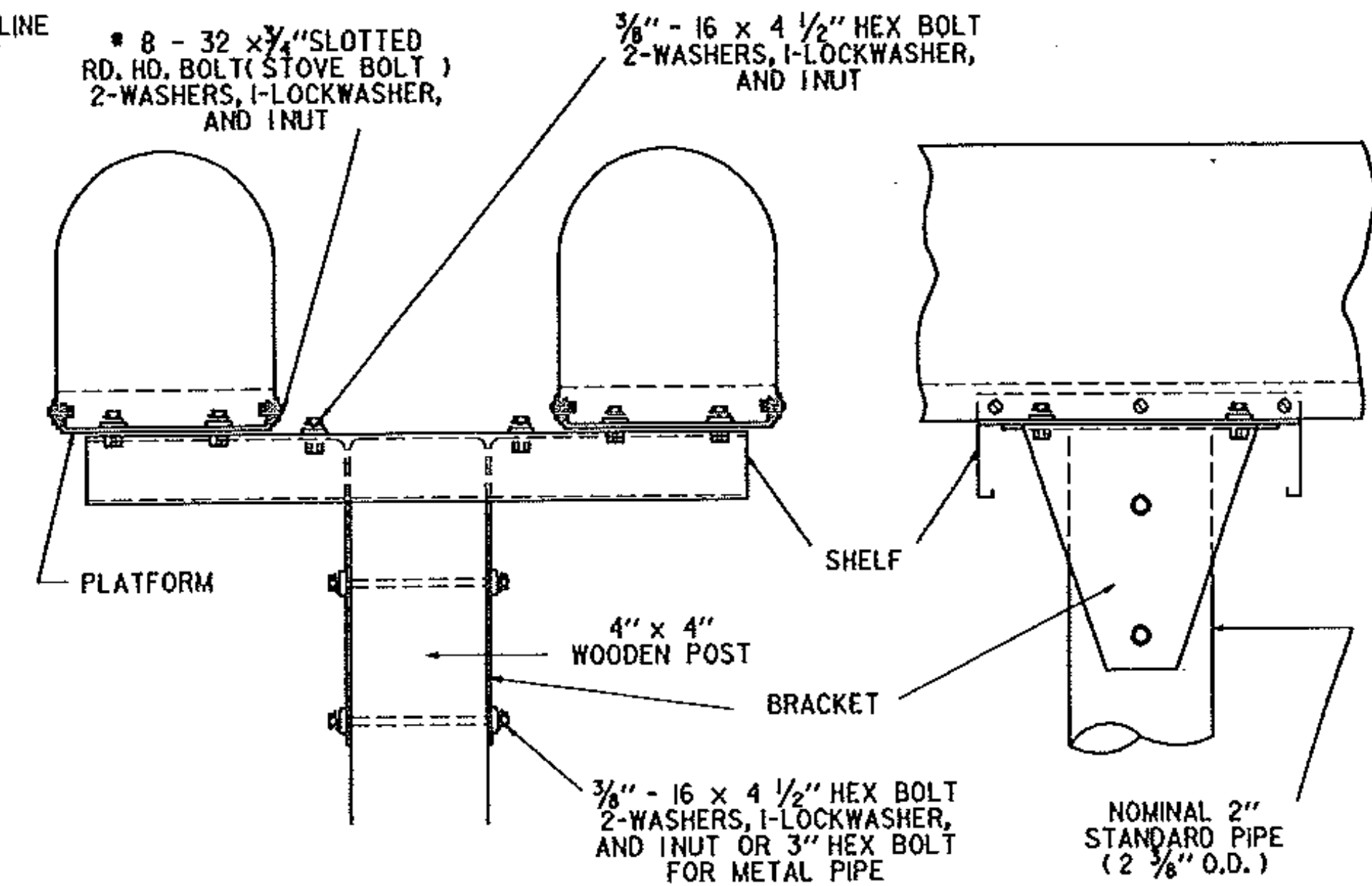
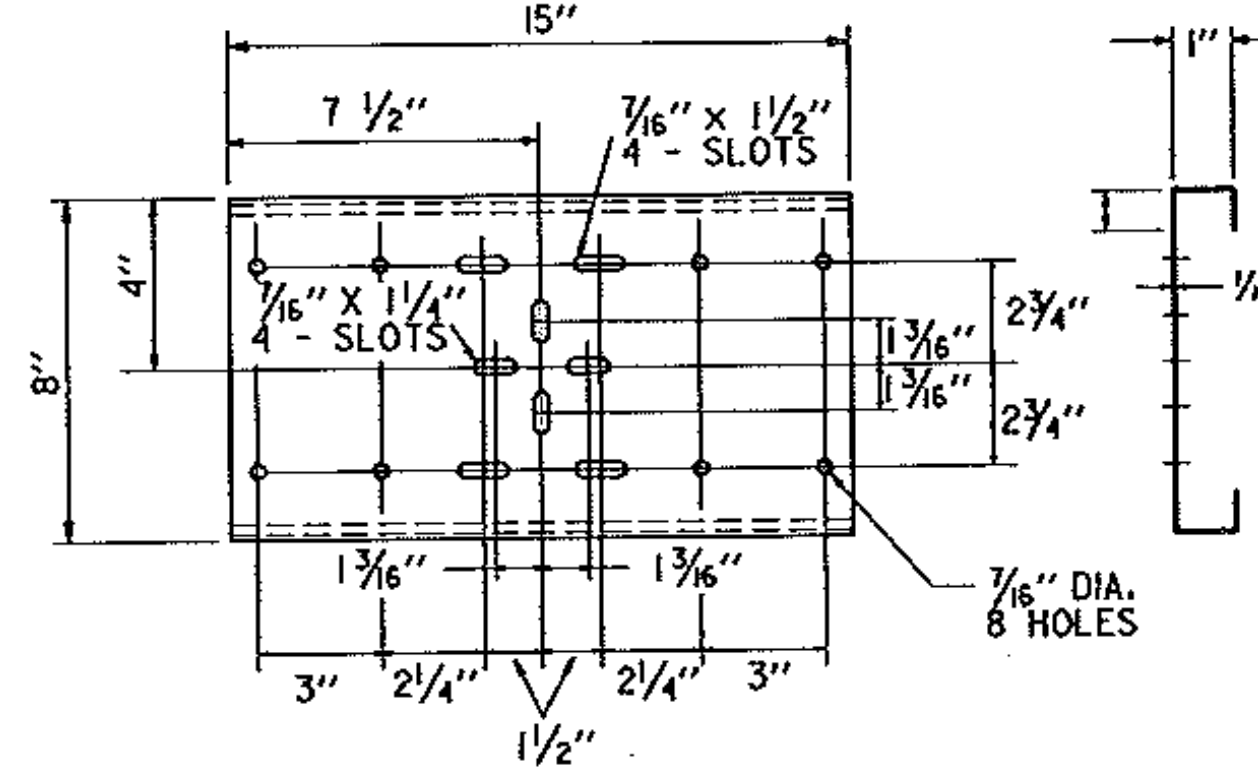
**SPECIFICATIONS**

6. BRACKETS: PRE-GALVANIZED 20 GAUGE SHEET STEEL PUNCHED AND FORMED TO SHOWN SHAPE, ADJUSTABLE TO FIT STANDARD RURAL MAILBOXES NO. 4, 9 x 8 1/2 x 8 1/2 or NO. 1-A, 21 x 8 x 10 1/2.
7. U-CLAMP WITH SADDLE 3/8" x 1 1/4" x 2 3/8" HEX NUTS ZINC PLATED, 2 3/8" FLAT WASHERS ZINC PLATED.



SPACING FOR MULTIPLE POST INSTALLATION

**SHELF FOR TWO BOXES**



**MAILBOX SUPPORT HARDWARE**

( SINGLE AND MULTIPLE SUPPORT )