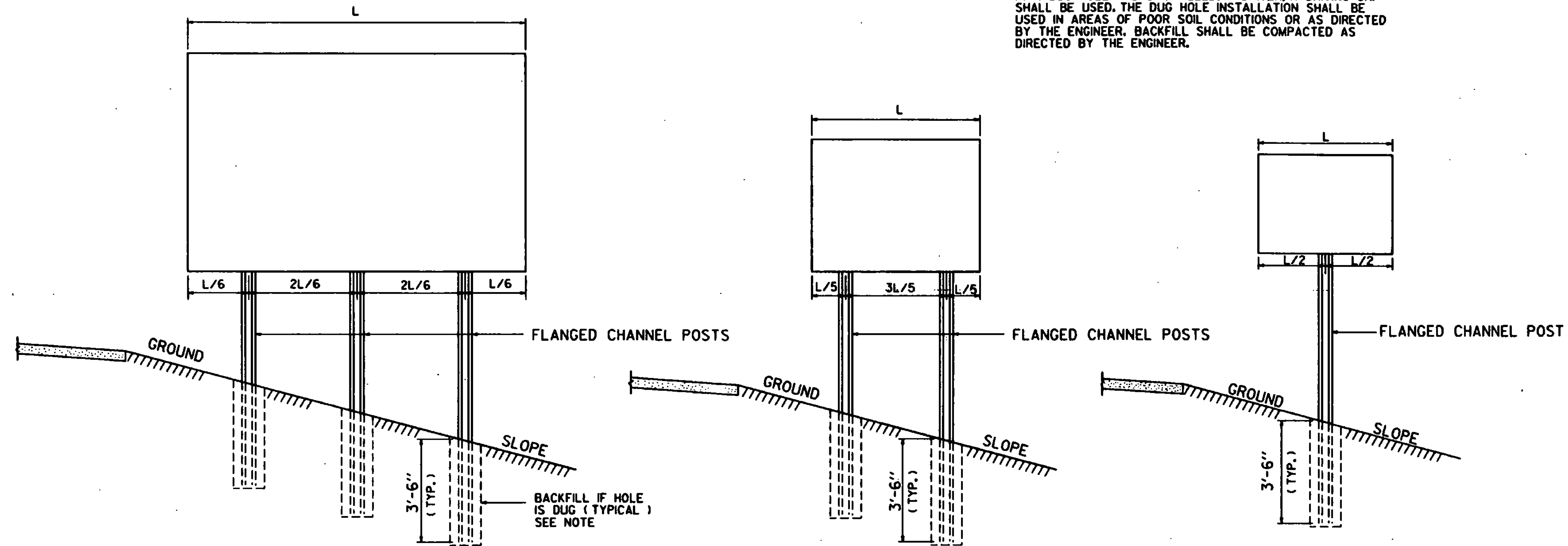
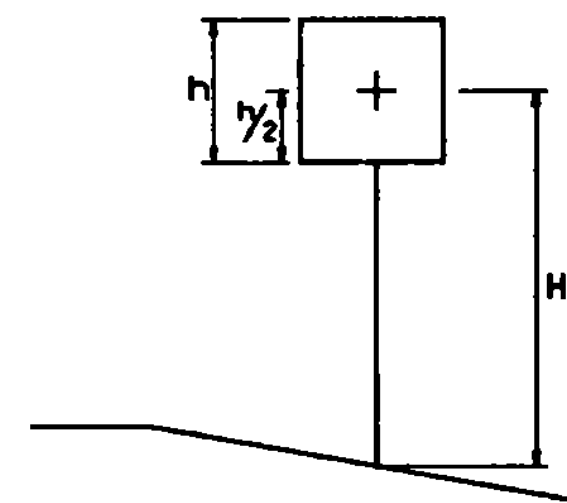


GENERAL NOTES

CONSTRUCTION METHODS - POSTS MAY BE DRIVEN OR SET IN A DUG HOLE AND BACKFILLED. IF DRIVEN, A DRIVING CAP SHALL BE USED. THE DUG HOLE INSTALLATION SHALL BE USED IN AREAS OF POOR SOIL CONDITIONS OR AS DIRECTED BY THE ENGINEER. BACKFILL SHALL BE COMPACTED AS DIRECTED BY THE ENGINEER.



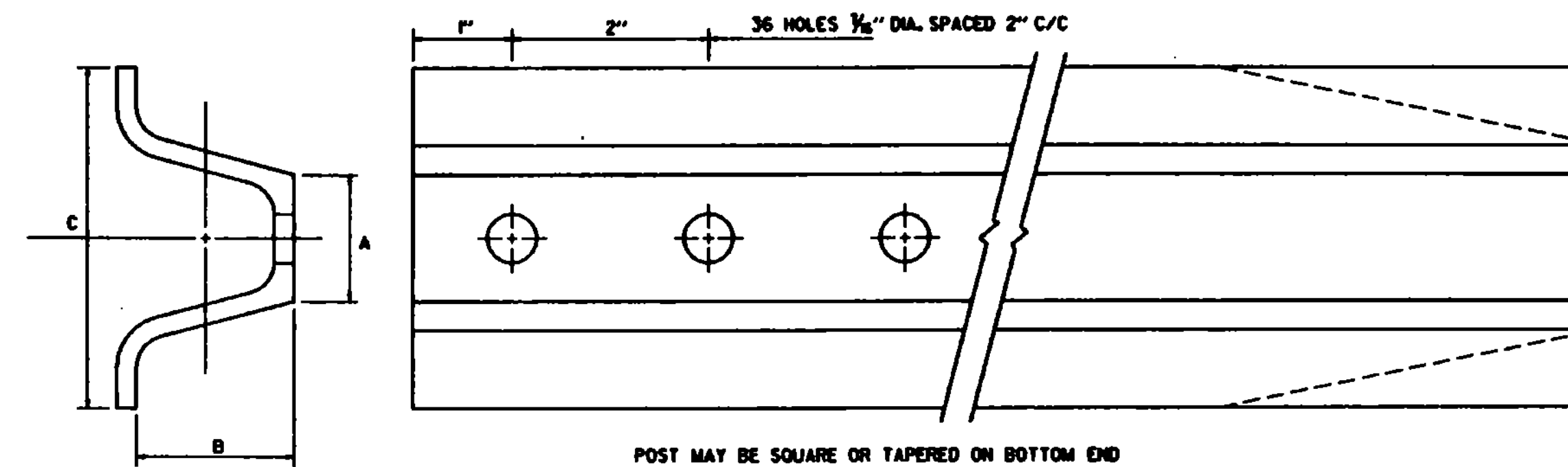
POST SPACING DETAILS



POST SELECTION CHART		
SIGN AREA (FT ²) x H (FT) (SV (SELECTION VALUE))		
POST SIZE	SV	DESIGN CRITERIA
2 LB/FT.	32	WIND SPEED = 60 MPH (10-YEAR MEAN RECURRENCE INTERVAL) WIND PRESSURE = 12 PSF STEEL MIN YIELD F _y = 50,000 PSI ALLOWABLE STRESS = (1.4) 0.55 F _y
2 1/2 LB/FT.	77	
3 LB/FT.	107	

POST SIZE POUNDS PER LINEAR FOOT	DIMENSIONS			PLASTIC SECTION MODULUS, Z
	A	B	C	
2	1 9/32"	1 3/64"	3 1/16"	0.26 IN. ³
2 1/2	1 9/32"	1 39/64"	3 1/16"	0.40 IN. ³
3	1 5/16"	1 1/8"	3 1/2"	0.53 IN. ³

SIMILAR DIMENSIONS ARE ACCEPTABLE, HOWEVER PLASTIC SECTION MODULUS VALUES MUST NOT BE EXCEEDED.



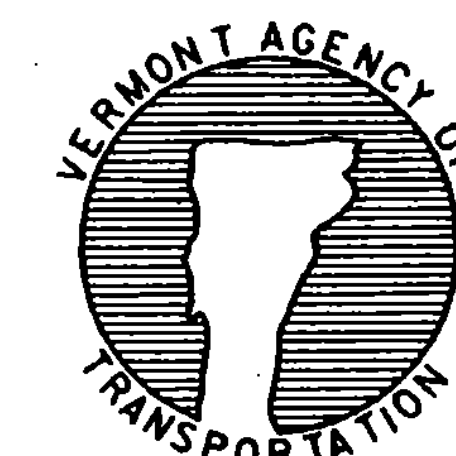
POST MAY BE SQUARE OR TAPERED ON BOTTOM END

REVISIONS AND CORRECTIONS

APPROVED

SEPT. 10, 1987
DATE
David B. Kelley
CHIEF ENGINEER
Arthur J. Yess
DIRECTOR OF PLANNING
AND PRE-CONSTRUCTION
Stephen B. MacArthur
TRAFFIC AND SAFETY ENGINEER

FLANGED CHANNEL STEEL SIGN POST



STANDARD E-160