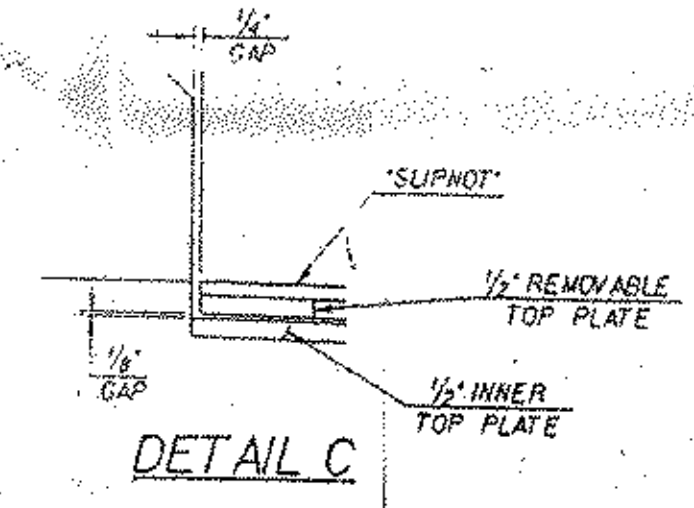
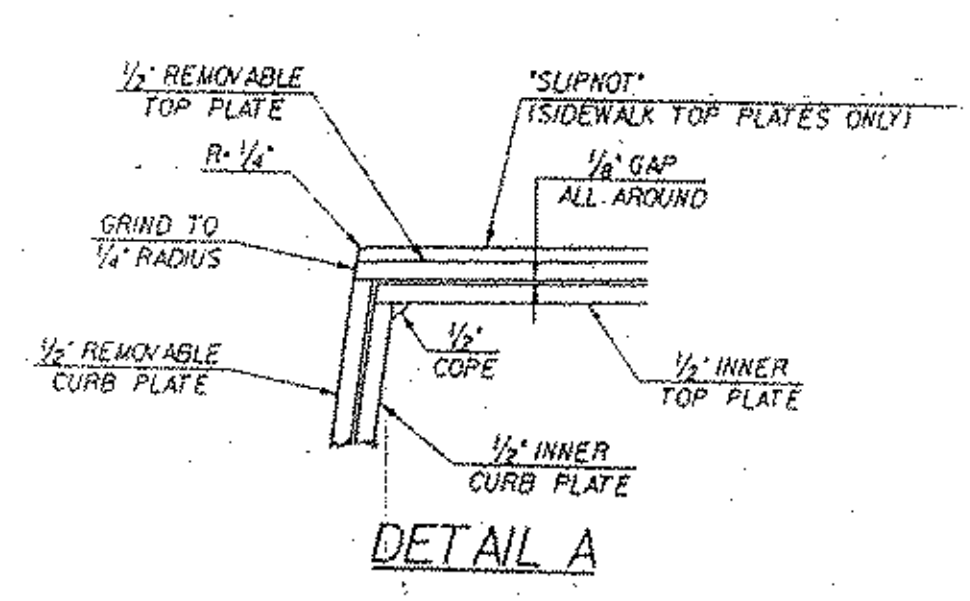
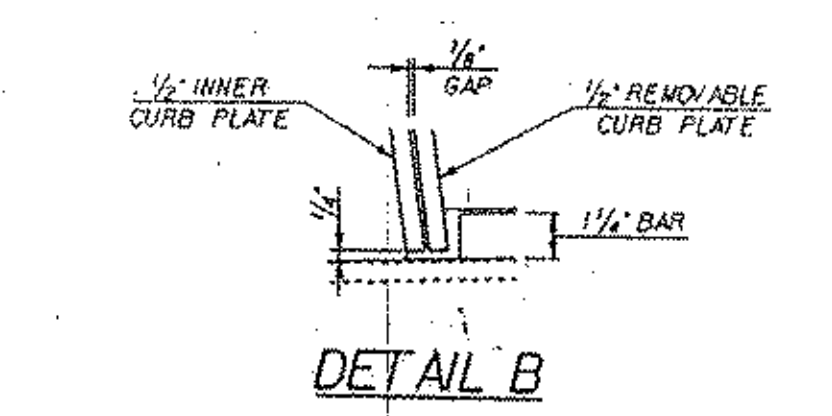
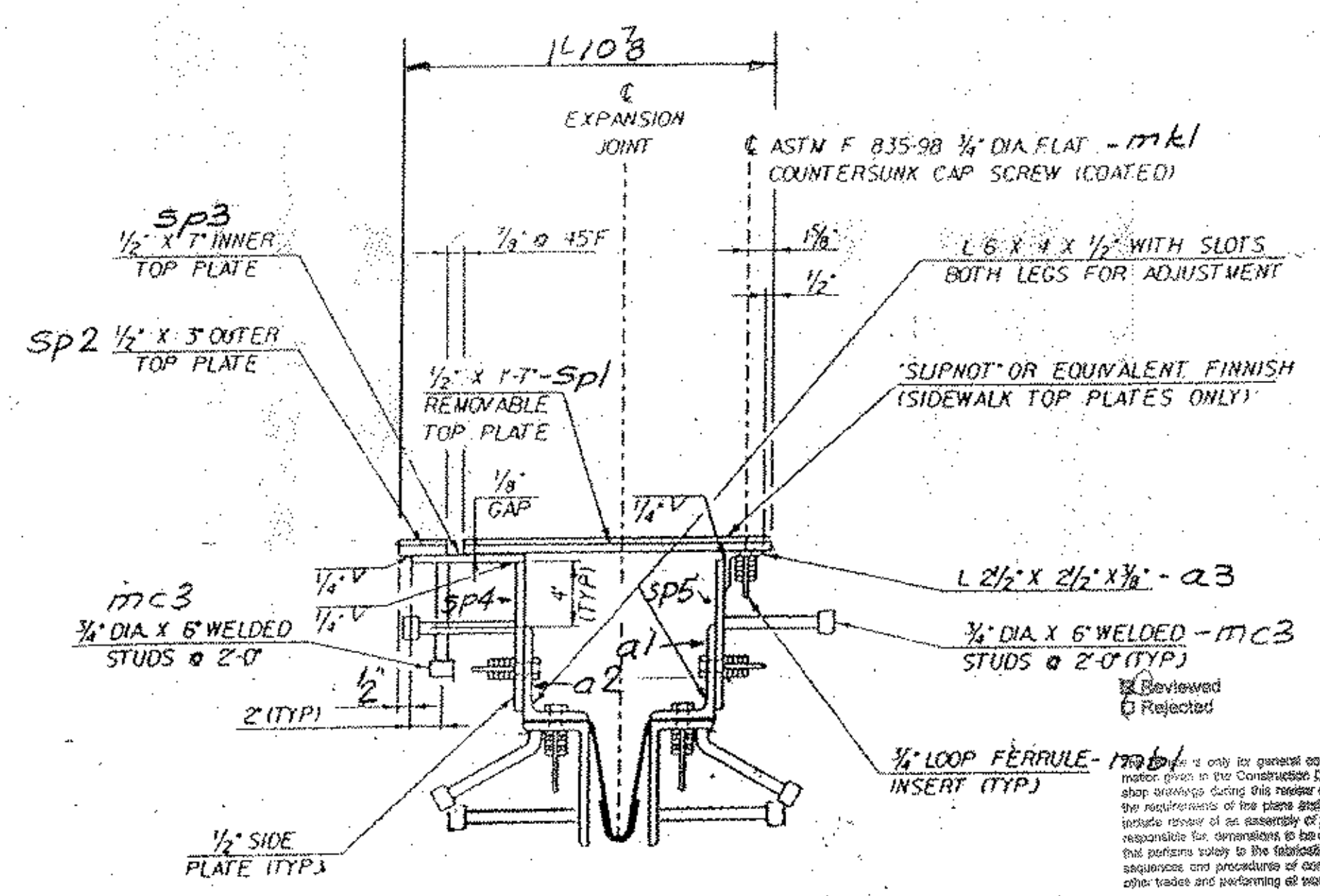


3 x 2 SLOTS IN BOTH LEGS OF a1 & a2



WORK THIS DWG. W/ DWG J1



- Furnish as Corrected
- Revise and Resubmit
- Submit Specified Item

McFarland-Johnson, Inc.
Date: 5/16/04
By: Steven F. Selig

OUT FOR APPROVAL	B-LAON									
OUT FOR APPROVAL	Final 4/14/04									
ISSUED TO SHOP										
FIELD & OFFICE										

REV.	REMARKS	DATE	DWN	CHK	APP	Q.A.	NO.	DIA.	LGT	TYPE	WASHER
PROJECT NO.	BRF 025-1 (35) STATE PROJECT NO. 2										
MATERIAL	ASTM A36 STEEL ELECTRODES PER RULES AS NOTED SHOP BUILTS: 1/2" SURFACE PREP. & PAINT: A325-TYPE 1 GALV.										

GALVANIZE AFTER FAB - ASTM-A123

DESCRIPTION:	EXP. JOINT - ABUT. NO. 2.	DRAWN BY:	JPF	DATE:	3-04
JOB:	VT 103 OVER	CHKD BY:	EJ	APPROV BY:	(Signature)
	WILLIAMS RIVER				
	CHESTER VT.				

CUSTOMER:	F.W. WHITCOMB CONSTR.	JOB NO.	230	DRG. NO.	J1A
CASCO BAY STEEL STRUCTURES, INC.		75 SPRING HILL ROAD	SACO, MAINE 04072	PHONE (207) 282-7360	FAX (207) 282-1179
		REV.			