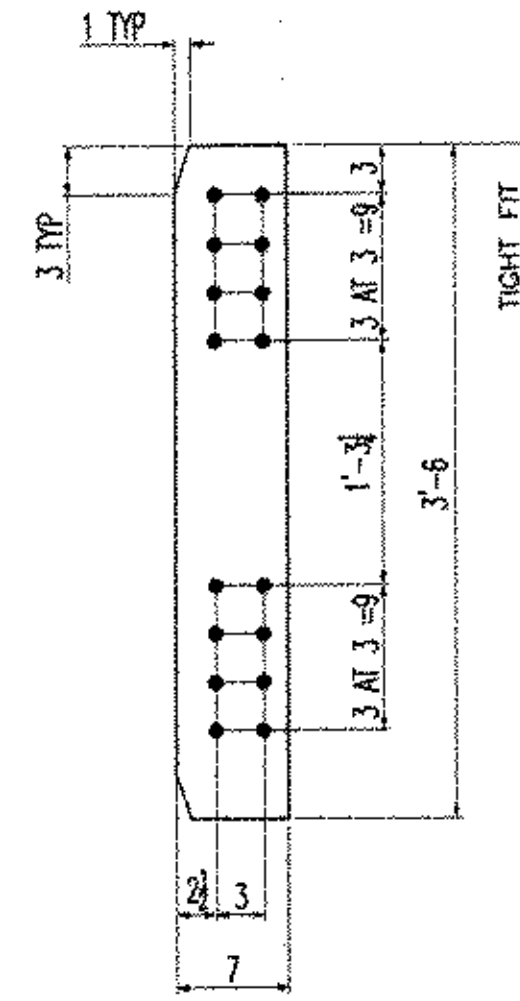
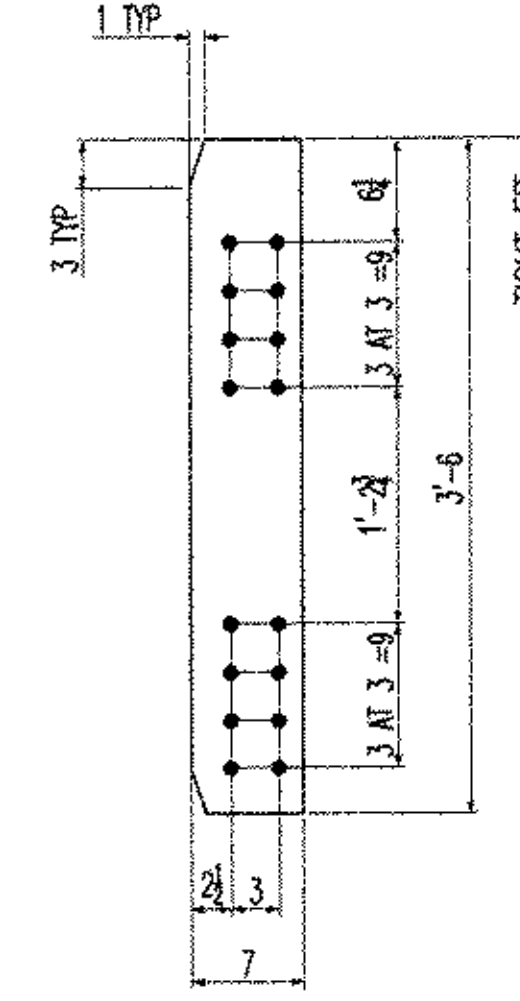


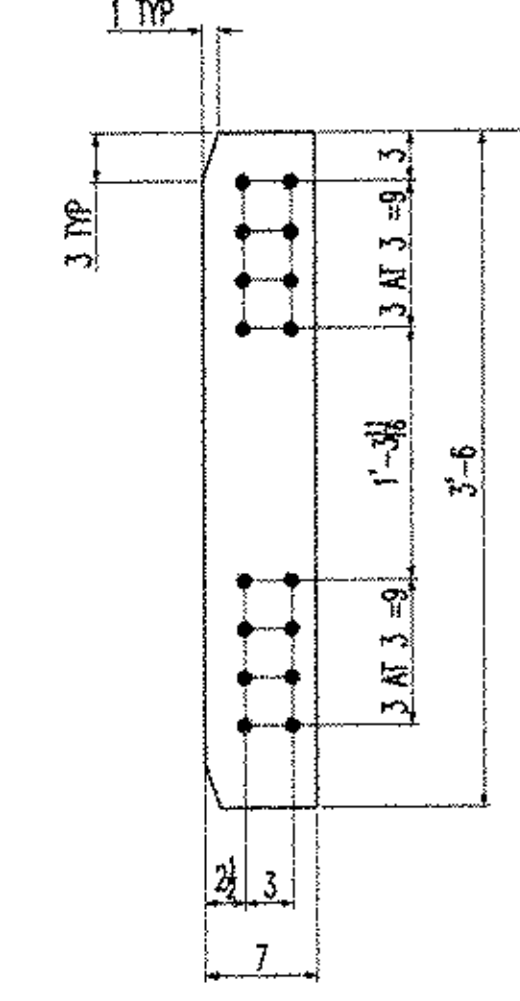
ITEM x3pa (2 REQ'D)  
SCALE: 1"=1'-0" (PL 1/2"x7"x3'-6") (12)



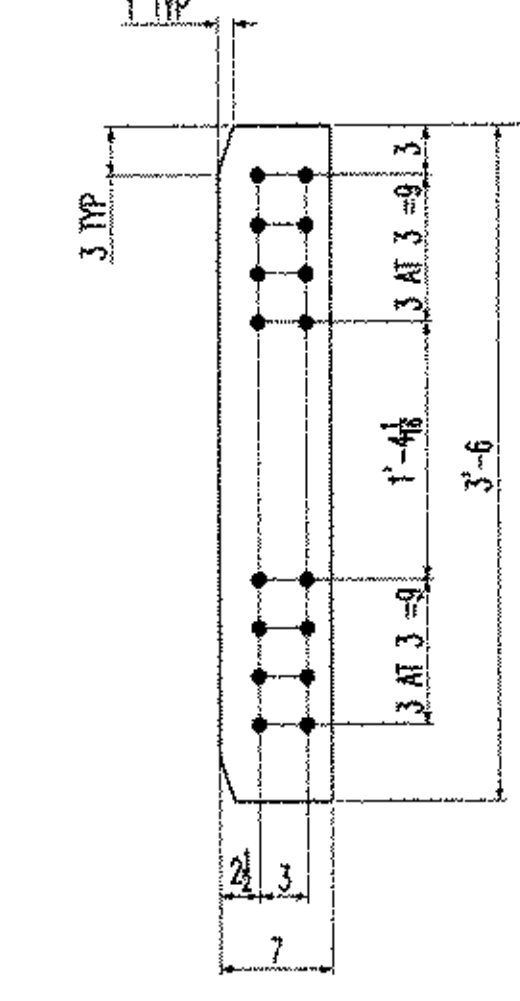
ITEM x3pb (1 REQ'D)  
SCALE: 1"=1'-0" (PL 1/2"x7"x3'-6") (12)



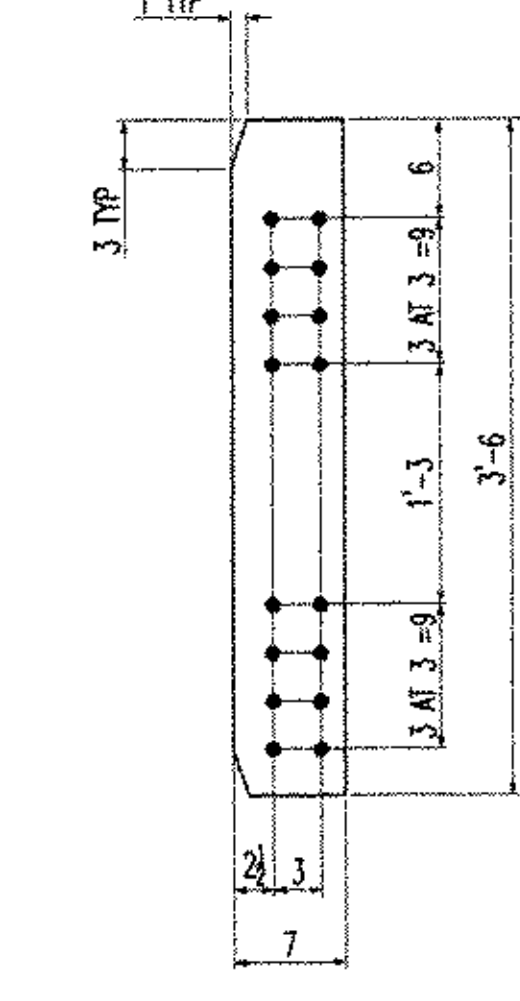
ITEM x3pc (2 REQ'D)  
SCALE: 1"=1'-0" (PL 1/2"x7"x3'-6") (12)



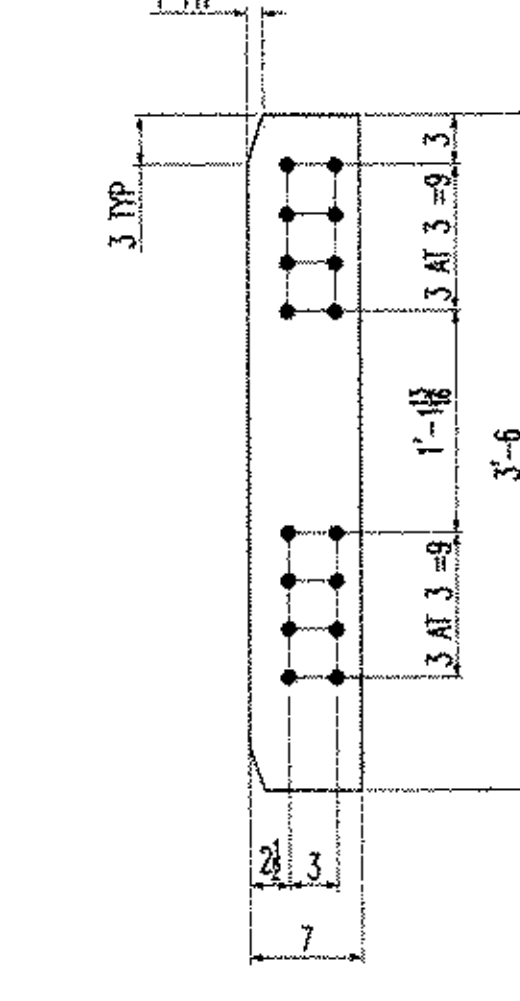
ITEM x3pd (1 REQ'D)  
SCALE: 1"=1'-0" (PL 1/2"x7"x3'-6") (12)



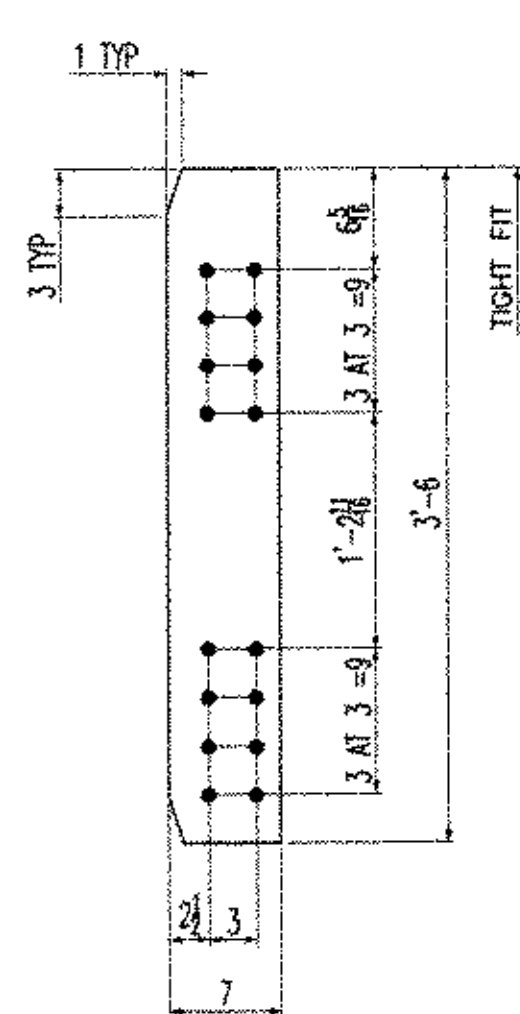
ITEM x3pf (1 REQ'D)  
SCALE: 1"=1'-0" (PL 1/2"x7"x3'-6") (12)



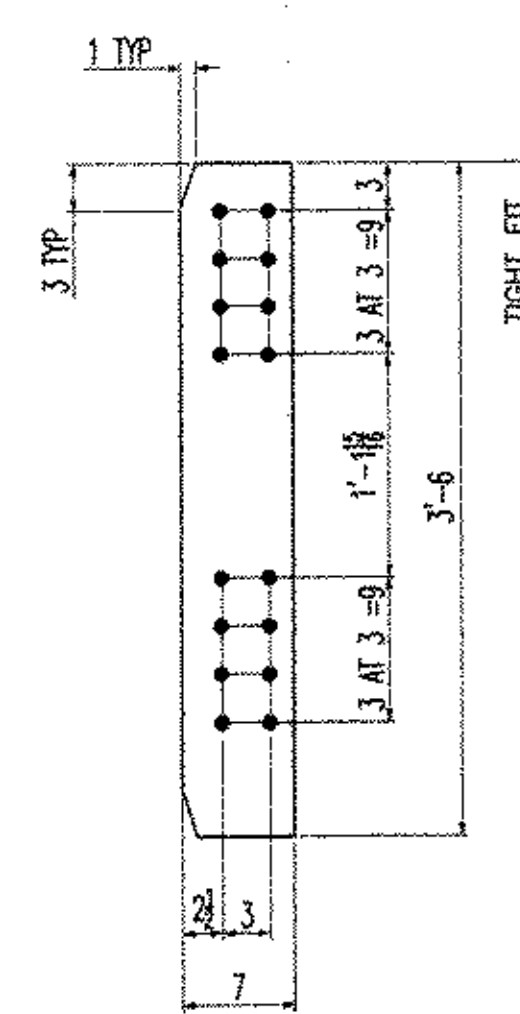
ITEM x3pg (2 REQ'D)  
SCALE: 1"=1'-0" (PL 1/2"x7"x3'-6") (12)



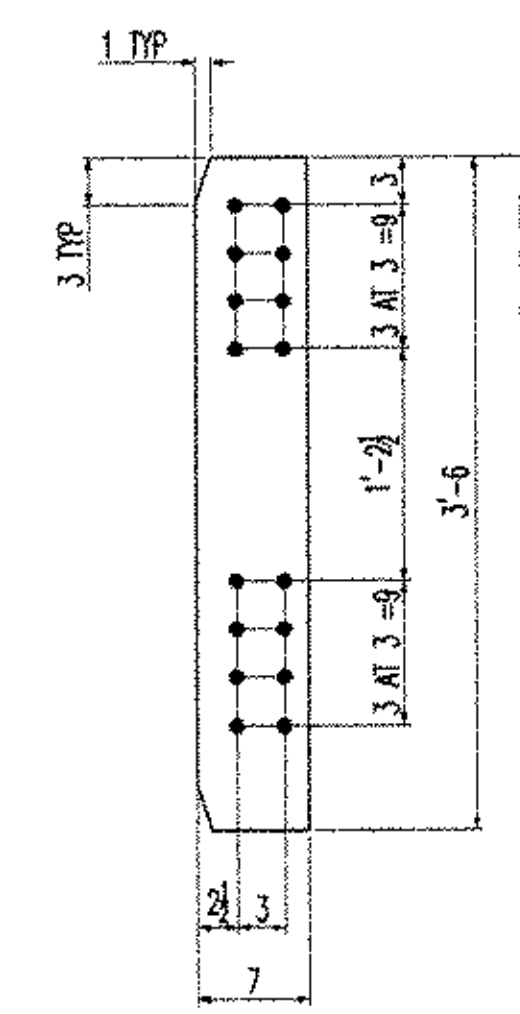
ITEM x3ph (1 REQ'D)  
SCALE: 1"=1'-0" (PL 1/2"x7"x3'-6") (12)



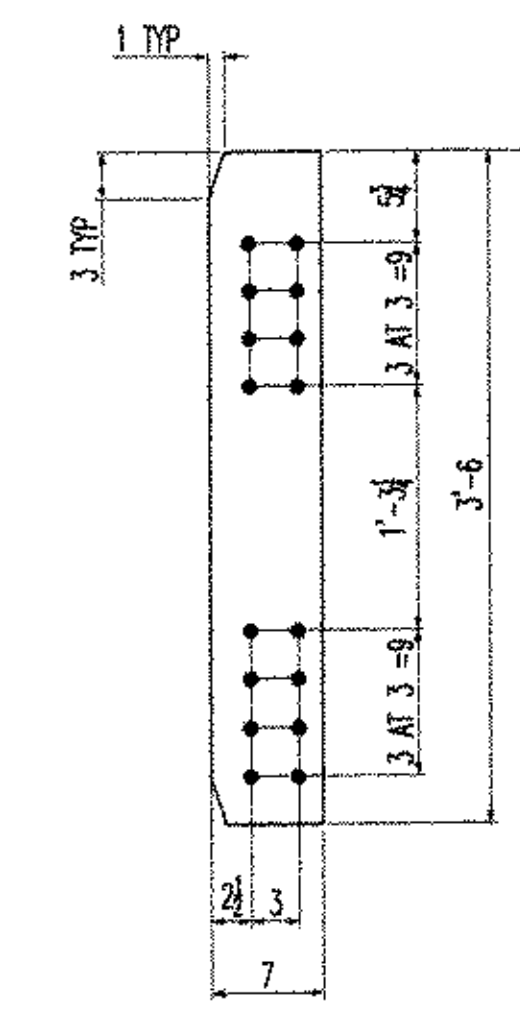
ITEM x3pk (1 REQ'D)  
SCALE: 1"=1'-0" (PL 1/2"x7"x3'-6") (12)



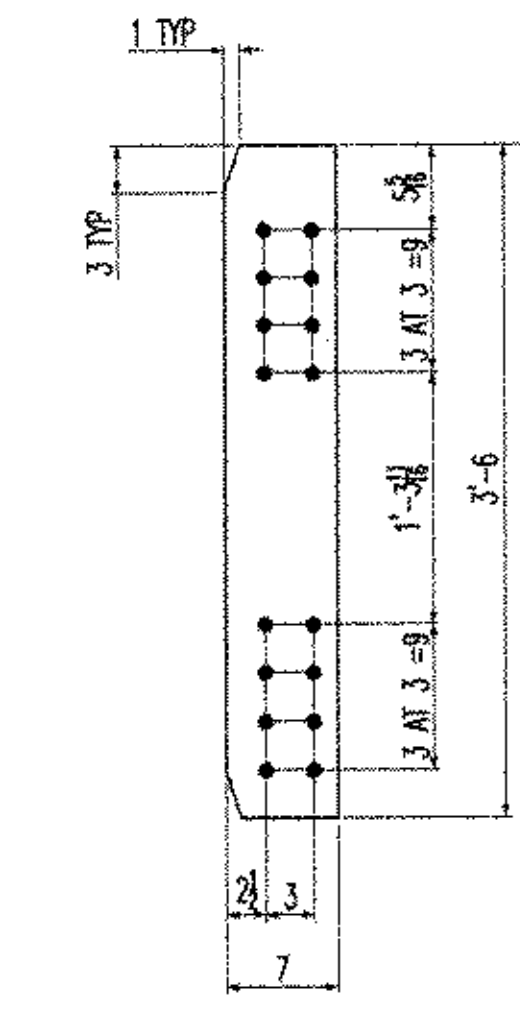
ITEM x3pm (1 REQ'D)  
SCALE: 1"=1'-0" (PL 1/2"x7"x3'-6") (12)



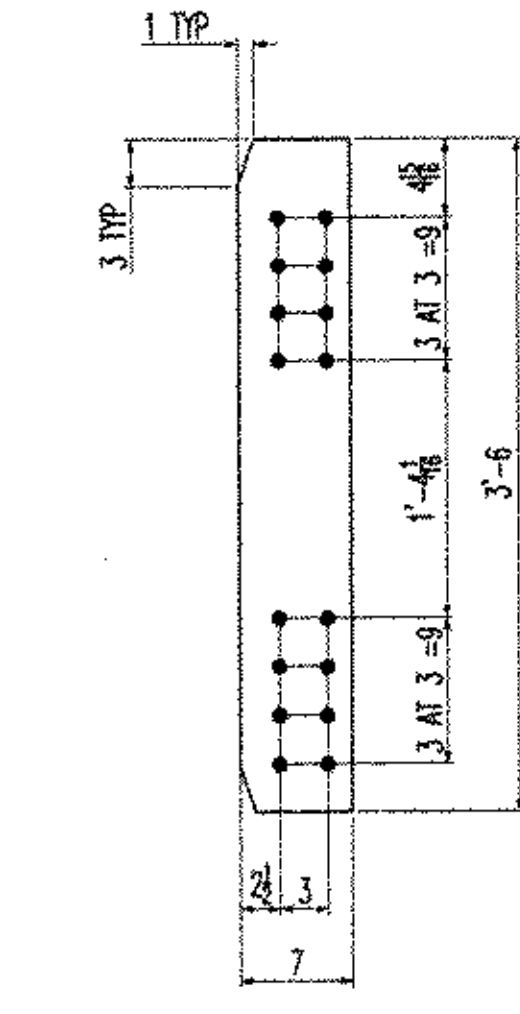
ITEM x3pn (1 REQ'D)  
SCALE: 1"=1'-0" (PL 1/2"x7"x3'-6") (12)



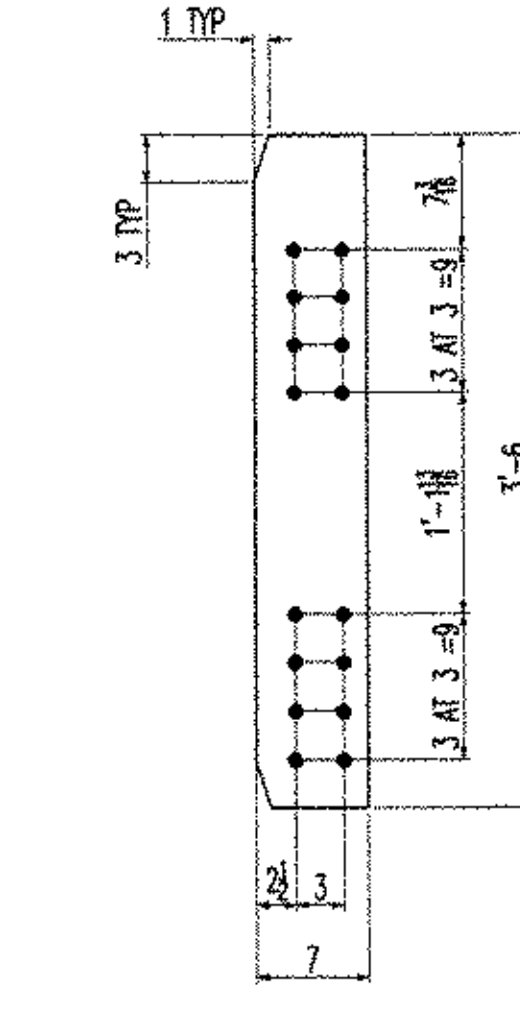
ITEM x3pp (1 REQ'D)  
SCALE: 1"=1'-0" (PL 1/2"x7"x3'-6") (12)



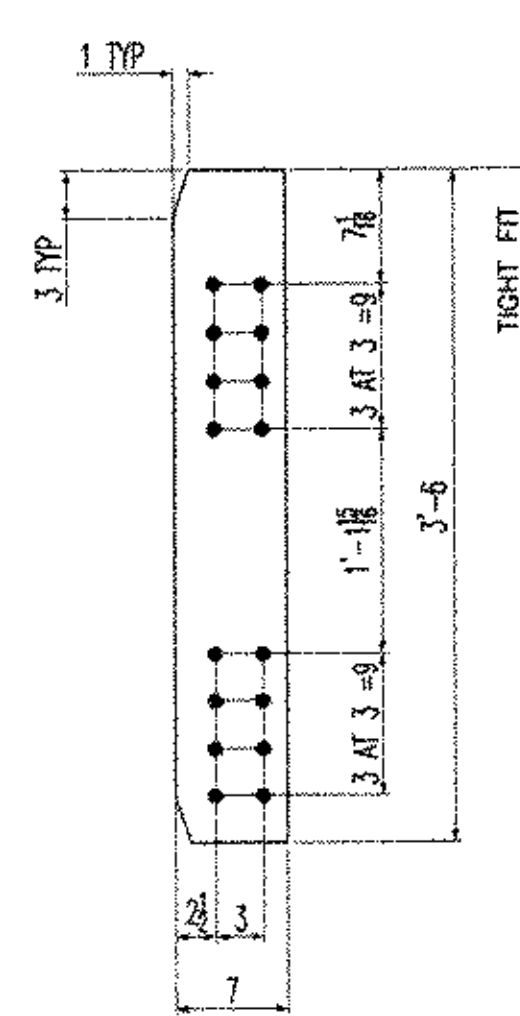
ITEM x3pr (1 REQ'D)  
SCALE: 1"=1'-0" (PL 1/2"x7"x3'-6") (12)



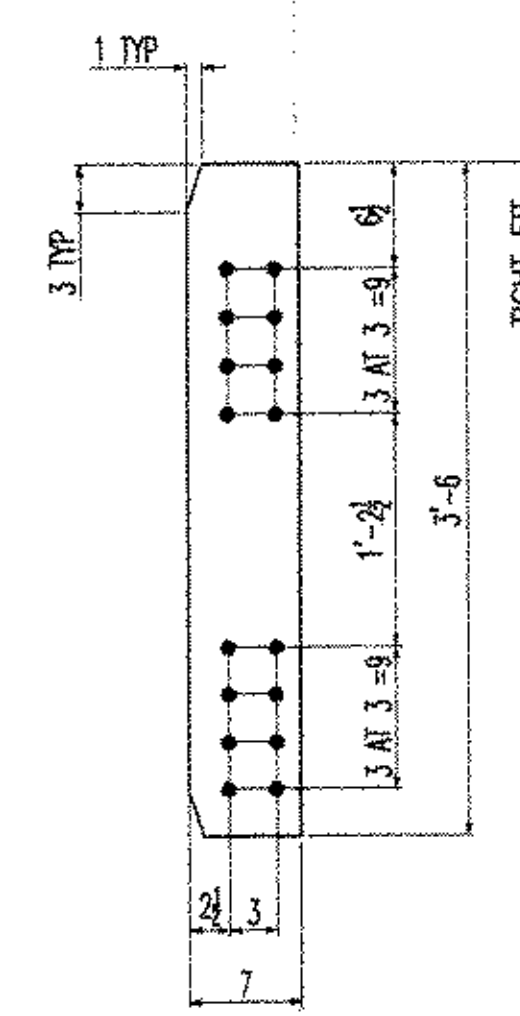
ITEM x3ps (1 REQ'D)  
SCALE: 1"=1'-0" (PL 1/2"x7"x3'-6") (12)



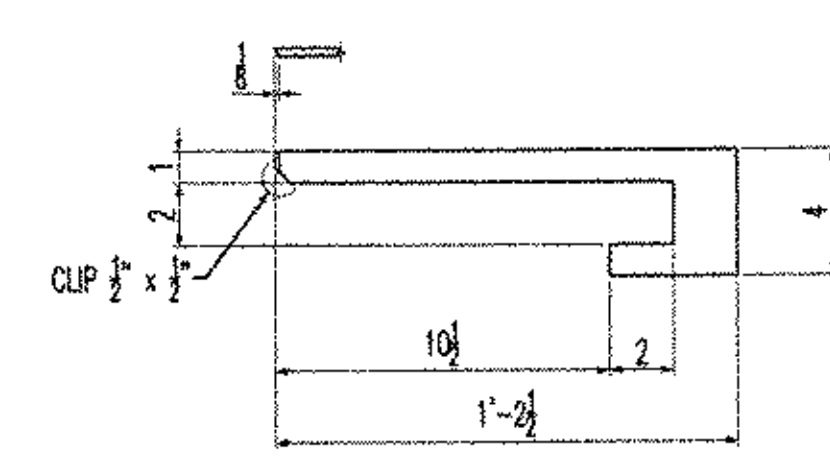
ITEM x3pt (1 REQ'D)  
SCALE: 1"=1'-0" (PL 1/2"x7"x3'-6") (12)



ITEM x3pv (1 REQ'D)  
SCALE: 1"=1'-0" (PL 1/2"x7"x3'-6") (12)



ITEM x3py (1 REQ'D)  
SCALE: 1"=1'-0" (PL 1/2"x7"x3'-6") (12)

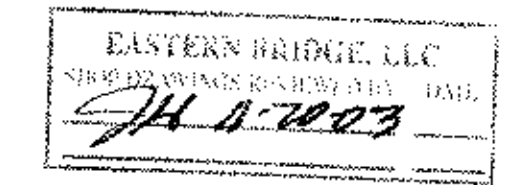


ITEM x3pz (1 REQ'D)  
SCALE: 1"=1'-0" (PL 1/4"x4'1'-2 1/4") (23)

NOTES:  
1- GENERAL NOTES: SEE DRAWING GN1  
2- HOLES : 15/16" (U.N.O.)

- Reviewed
- Rejected
- Furnish as Corrected
- Revise and Resubmit
- Submit Spec

This drawing is for general information only. It is not to be used for construction. The contractor shall be responsible for verifying all dimensions and specifications. The contractor shall be responsible for obtaining all necessary permits and approvals. The contractor shall be responsible for ensuring that all work is done in accordance with the applicable codes and standards.



RESERVED FOR STAMPS

DRAWINGS PREPARED BY:  
AMEC E&C SERVICES LTD, 4765 1ST AVENUE, SUITE 120, CHARLESBOURG (QUEBEC), CANADA G1H 2T3 #030731-EAS

REV	DATE	DESCRIPTION	QTY	DATE	ISSUED TO	FOR
81	11/17/03	FRANK W. WHITCOMB CONSTRUCTION CO.				APPROVAL

PROJECT: BRIDGE #12 VT 103-TH OVER WILLIAMS RIVER	
LOCATION: CHESTER, VERMONT	
ENGINEER: McFARLAND-JOHNSON, INC.	
CUSTOMER: EASTERN BRIDGE LLC	
DRAWING TITLE: DETAILS	
DRAWN BY: D.B.	10/28/03 JOB NUMBER: 4065
CHECKED BY: L.D.	11/14/03 SHEET NUMBER: X3

NOTICE  
This drawing shall not be used or reproduced in any manner, nor shall any similar drawings or structures be made therefrom, nor shall the information thereon be used for any purpose other than that for which it is released without the written consent of an officer of EASTERN BRIDGE LLC.



EASTERN BRIDGE LLC  
RURAL RTE 2, BOX 302  
CLAREMONT, NH 03743  
603-542-5202