

GENERAL NOTES:

STRUCTURAL STEEL:

1. ALL MATERIALS AND CONSTRUCTION SHALL CONFORM TO STATE OF VERMONT, AGENCY OF TRANSPORTATION STANDARD SPECIFICATIONS FOR HIGHWAY AND BRIDGE CONSTRUCTION, DATED 2001, AND ITS LATEST REVISIONS, AND THE AASHTO STANDARD SPECIFICATIONS FOR HIGHWAY BRIDGES, AND ITS LATEST REVISIONS.
2. ALL STRUCTURAL STEEL SHALL BE FABRICATED USING PROCEDURES AND TOLERANCES IN ACCORDANCE WITH SECTION 506.03 OF THE STANDARD SPECIFICATIONS.
3. ALL DIMENSIONS ARE GIVEN AT 68°F UNLESS OTHERWISE NOTED.
4. ALL MEMBERS AND/OR PLATES MARKED (CVN) AND ONLY THOSE MEMBERS MUST MEET THE CHARPY V-NOTCH REQUIREMENTS FOR MAIN MEMBERS AS INDICATED IN SECTION 714 OF THE VERMONT AGENCY OF TRANSPORTATION SPECIFICATIONS OF CONSTRUCTION.
5. ALL STRUCTURAL STEEL SHALL CONFORM TO AASHTO M270 GRADE 50W.
6. ALL FIELD CONNECTIONS SHALL BE MADE USING 3/4 INCH DIAMETER BOLTS MEETING ASTM DESIGNATION A325 TYPE 3 (AASHTO M164). HOLES SHALL BE 1/16 INCH DIAMETER.
7. ANY BOLT HOLES IN THE WEB OF THE FASCIA GIRDERS NOT OTHERWISE FILLED SHALL BE FILLED WITH BUTTON HEAD OR HEXAGONAL HEAD BOLTS COMPATIBLE WITH THE GIRDER STEEL. THE BOLTS SHALL BE TIGHTENED IN ACCORDANCE WITH SUBSECTION 506.19.

SHOP APPLIED PAINT SYSTEM:

1. ALL STRUCTURAL STEEL INCLUDING GIRDERS, CROSS FRAMES, STIFFENERS AND LATERAL BRACINGS WITHIN A DISTANCE OF 7'-0" FROM THE END OF THE GIRDER (EXPANSION ENDS) SHALL BE COATED WITH A PROTECTIVE PAINT SYSTEM AS SPECIFIED IN SUPPLEMENTAL SPECIFICATION 513. THE COLOR OF PAINT WILL BE BROWN, COLOR CHIP 20059. GREASING SHALL BE DONE IN ACCORDANCE WITH SUPPLEMENTAL SPECIFICATION 513.06(d). *(BY OTHERS)*
2. ALL COATINGS SHALL BE APPLIED WITHIN THE DRY FILM THICKNESS LIMITS SPECIFIED AND IN NO CASE SHALL THE ZINC PRIMER EXCEED THE SPECIFIED THICKNESS WITHIN THE AREAS OF FAYING CONTACT SURFACES (BOLTED JOINT CONNECTIONS).
3. FINAL SURFACE APPEARANCE OF NEW STEEL, PRIOR TO APPLICATION OF ANY PRIMER, SHALL BE AT LEAST EQUIVALENT TO A "NEAR WHITE" SURFACE PREPARATION GRADE SSPC-SP10 (ASTM D2200 GRADE Sa 2-1/2). THE SURFACE ROUGHNESS (PROFILE) SHALL BE WITHIN THE RANGE OF 0.038 TO 0.064mm (1.5 TO 2.5 MILS).

SHOP APPLICATION:

1. FOR SHOP APPLIED SYSTEMS, THE EDGES OF PLATES AND OTHER SHAPES WITH SHARP DISCONTINUITIES SHALL BE STRIPED WITH AN INITIAL COATING APPLIED PRIOR TO THE APPLICATION OF OVERALL COATING. STRICT ATTENTION MUST BE PAID TO THE RECOAT TIMES OF ALL APPLIED MATERIALS WHEN COATING THESE DISCONTINUITIES. BOLTED CONNECTIONS SHALL ALSO HAVE ALL BOLT HEADS AND NUTS STRIPED IN A CIRCULAR MOTION FOLLOWING THE SAME PROCEDURE. FOR REHABILITATION APPLICATIONS, STRIPPING OF THE EDGES OF PLATES, OTHER SHAPES, BOLT HEADS OR NUTS WILL NOT BE REQUIRED IF THE METHOD OF APPLICATION PROVIDES ADEQUATE COVERAGE (THICKNESS) ON THE EDGES.
2. SURFACES WHICH WILL BE INACCESSIBLE AFTER ERECTION SHALL BE COATED PRIOR TO ERECTION WITH ALL THE COATS SPECIFIED FOR THE SYSTEM USED.
3. THE FAYING SURFACES ON GUSSET PLATES, CONNECTION PLATES, SIDEWALK BRACKET, AND SPLICE PLATES SHALL BE PREPARED AS CLASS "C", THESE SURFACES SHALL BE PROTECTED FROM DAMAGE AND CORROSION PRIOR TO THE CONNECTION.

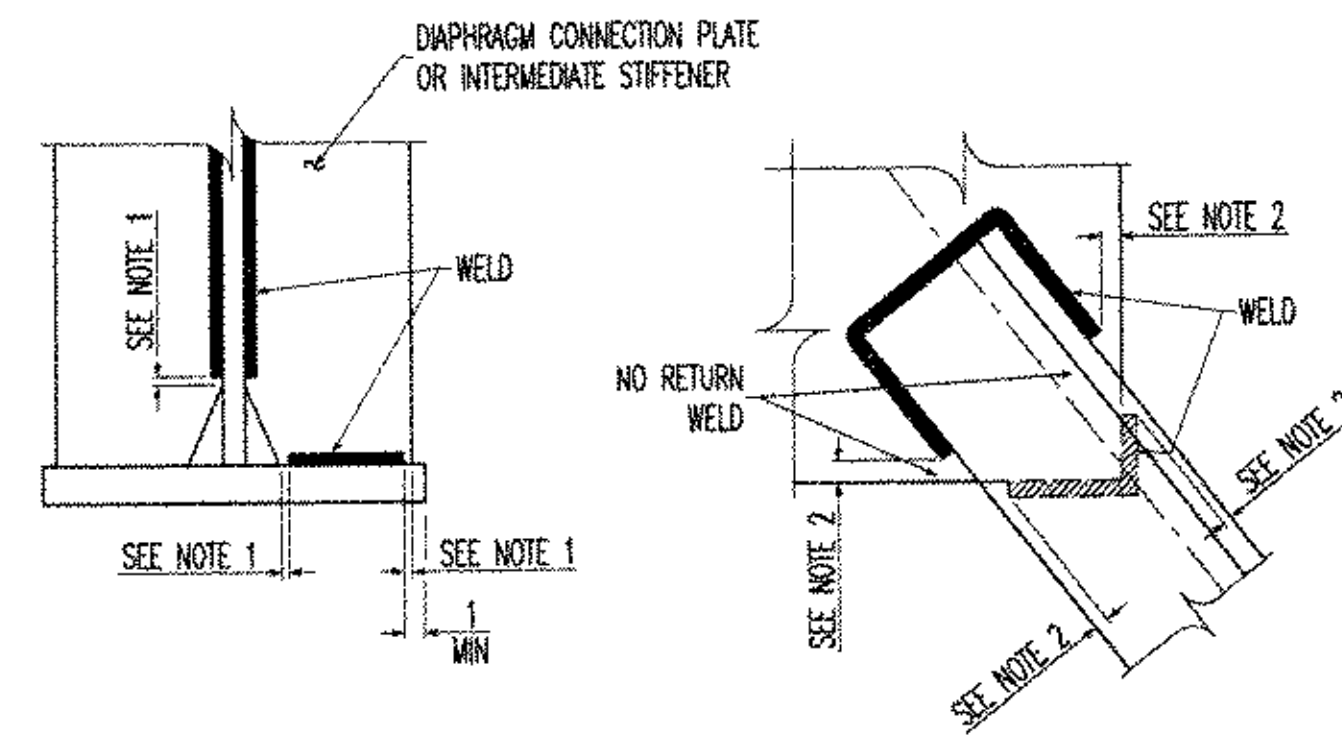
PAINT SYSTEM: AS MANUFACTURED BY CARBOLINE COMPANY:

PRIMER: CARBOZINC CZ11HS
2-3 mils DFT

INTERMEDIATE: CARBOGUARD 893
4-6 mils DFT

FINISH: CARBOTHANE 133HB
3-5 mils

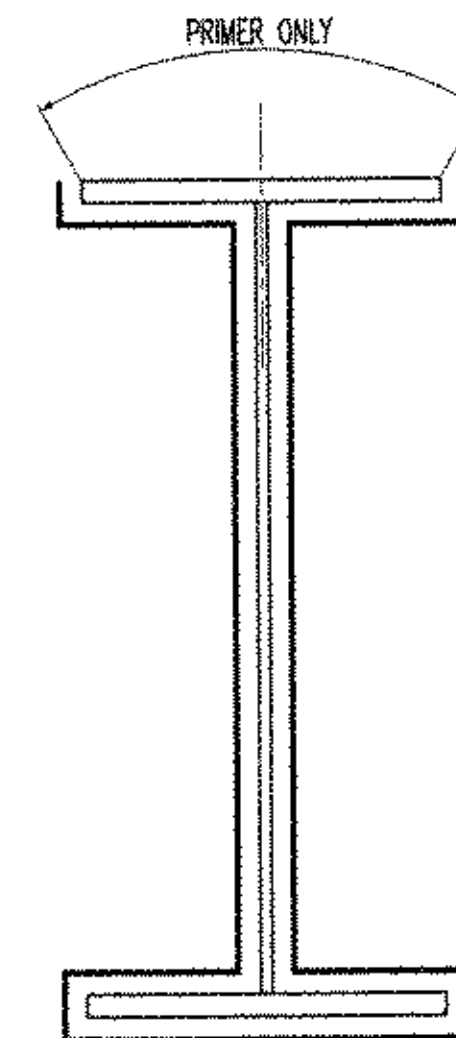
COLOR: BROWN, FEDERAL STANDARD 595, COLOR CHIP NO.20059



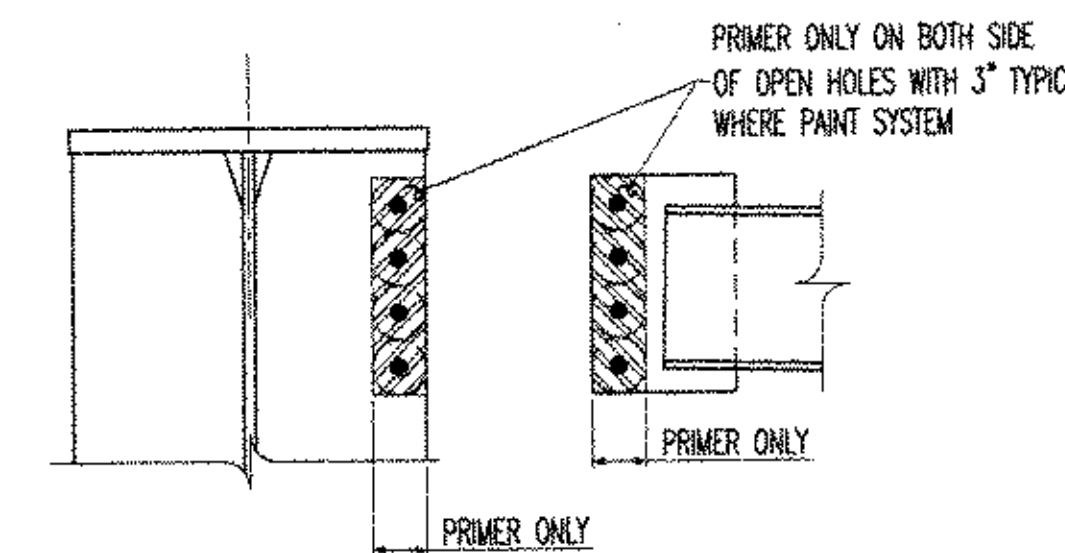
NOTE 1- NO WELD FOR 1/4 MIN. 1/4 MAX. (EXCEPT MUST MAINTAIN 1 MIN FROM EDGE OF FLANGE.)

NOTE 2- NO WELD FOR 1/4 MIN. 1/4 MAX.

WELD TERMINATION DETAIL
NTS



PAINT ZONE DETAIL
NTS



FAYING SURFACES DETAIL
NTS

LIST OF ABBREVIATIONS

B	BEAM	MAX	MAXIMUM
BC	BOTTOM CHORD	MIN	MINIMUM
BOB	BOTTOM OF BASE PLATE	ML	MATERIAL LOOSE
BCC	BOTTOM OF CONCRETE	MS	MISCELLANEOUS
BOP	BOTTOM OF PLATE	(NS)	NEAR SIDE
BOS	BOTTOM OF STEEL	NTS	NOT TO SCALE
BOT	BOTTOM		
BR	BRACE	O/ALL	OVERALL
BRG	BEARING	OC	ON CENTERS
(BS)	BOTH SIDES	OD	OUTSIDE DIAMETER
		OH	OPPOSITE HAND
C	COLUMN	OPNG	OPENING
	CENTERLINE	OPP	OPPOSITE
C/C	CENTER TO CENTER		
CLR	CLEAR	PC	POINT OF CURVE
CONC	CONCRETE	PL	PLATE
CONST	CONSTRUCTION	PR	PORTAL
CONT	CONTINUOUS	PRJ	PROJECTION
CONN	CONNECTION		
CTR	CENTER	R	RISER
CVN	CHARPY V-NOTCH REQUIRED	R.D.	RUNNING DIMENSION
		REF	REFERENCE
		REQ'D	REQUIRED
		REV	REVISION
D	DEPTH		
DET	DETAIL	S	STAIRS
DIAG	DIAGONAL	SCH	SCHEDULE
DIA	DIAMETER	SECT	SECTION
DN	DOWN	SHT	SHEET
DWG	DRAWING	SP	SPACE
		SPA	SPACING
EA	EACH	SPEC	SPECIFICATION
EL	ELEVATION	SQ	SQUARE
EM	EMBEDDED MATERIAL	SR	SAG ROD
EMB	EMBEDDED	SS	STAINLESS STEEL
EQ	EQUAL	ST	STRINGER
EXIST	EXISTING	STF	STIFFENER
		STRUCT	STRUCTURAL
F	FRAME	STD	STANDARD
FB	FLOOR BEAM	SW	SIDEWALK BRACKET
FCM	FRACTURE CRITICAL MEMBER	SYMM	SYMMETRICAL
FIN FL	FINISH FLOOR	SWT	SHIPPING WEIGHT
FLG	FLANGE		
FLR	FLOOR	T	TRUSS
FP	FLOOR PLATE	TC	TOP CHORD
(FS)	FAR SIDE	THK	THICKNESS
G	GIRT	THD	THREAD
GA	GAUGE	T&B	TOP & BOTTOM
GALV	GALVANIZED	TOC	TOP OF CONCRETE
GOSL	GAUGE OUTSTANDING LEG	TOG	TOP OF GRATING
GR	GRATING	TOS	TOP OF STEEL
GRD	GROUND	TYP	TYPICAL
		U.N.O.	UNLESS NOTED OTHERWISE
H	HANGER	VERT	VERTICAL
HOR	HORIZONTAL	VB	VERTICAL BRACING
HR	HANDRAIL		
HS	HIGH-STRENGTH		
ID	INSIDE DIAMETER		
IN	INCHES		
		WP	WORKING POINT
L	LADDERS		

Reviewed
 Rejected

Furnish as Corrected
 Revise and Resubmit
 Submit Specified Item

This review is only for general compliance with the design concept and the information given in the Construction Documents. Contractors or subcontractors on the shop drawings during this review do not release the contractor from compliance with the requirements of the plans and specifications. Review of a specific item shall not constitute review of an assembly of which the item is a component. The Contractor is responsible for dimensions to be confirmed and corrected at the job site. Information that pertains solely to the fabrication process or to the means, methods, techniques, equipment and procedures of construction, construction of the Work with that or all other trades and performing all work in a safe and satisfactory manner.

McFarland-Johnson, Inc.
Date: 12-17-03
By: RSW

RESERVED FOR STAMPS

DRAWINGS PREPARED BY:
AMEC E&C SERVICES LTD, 4765 1ST AVENUE, SUITE 120, CHARLESBOURG (QUEBEC), CANADA G1H 2T3 #030731-EAS

REV	DATE	DESCRIPTION	QTY	DATE	ISSUED TO	FOR

PROJECT: BRIDGE #12 VT 103-TH OVER WILLIAMS RIVER
LOCATION: CHESTER, VERMONT
ENGINEER: MCFARLAND-JOHNSON, INC.
CUSTOMER: EASTERN BRIDGE LLC
DRAWING TITLE: GENERAL NOTES
DRAWN BY: D.B. 08/10/03
CHECKED BY: L.D. 11/14/03
NUMBER: 4065
SHEET NUMBER: 084 36

NOTICE
This drawing shall not be used or reproduced in any manner, nor shall any similar drawings or structures be made therefrom, nor shall the information thereon be used for any purpose other than that for which it is released without the written consent of an officer of EASTERN BRIDGE LLC.

