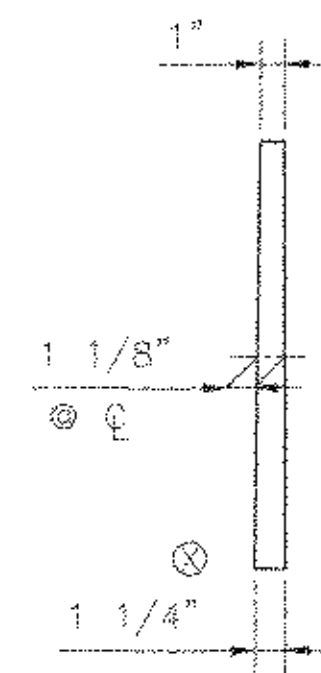
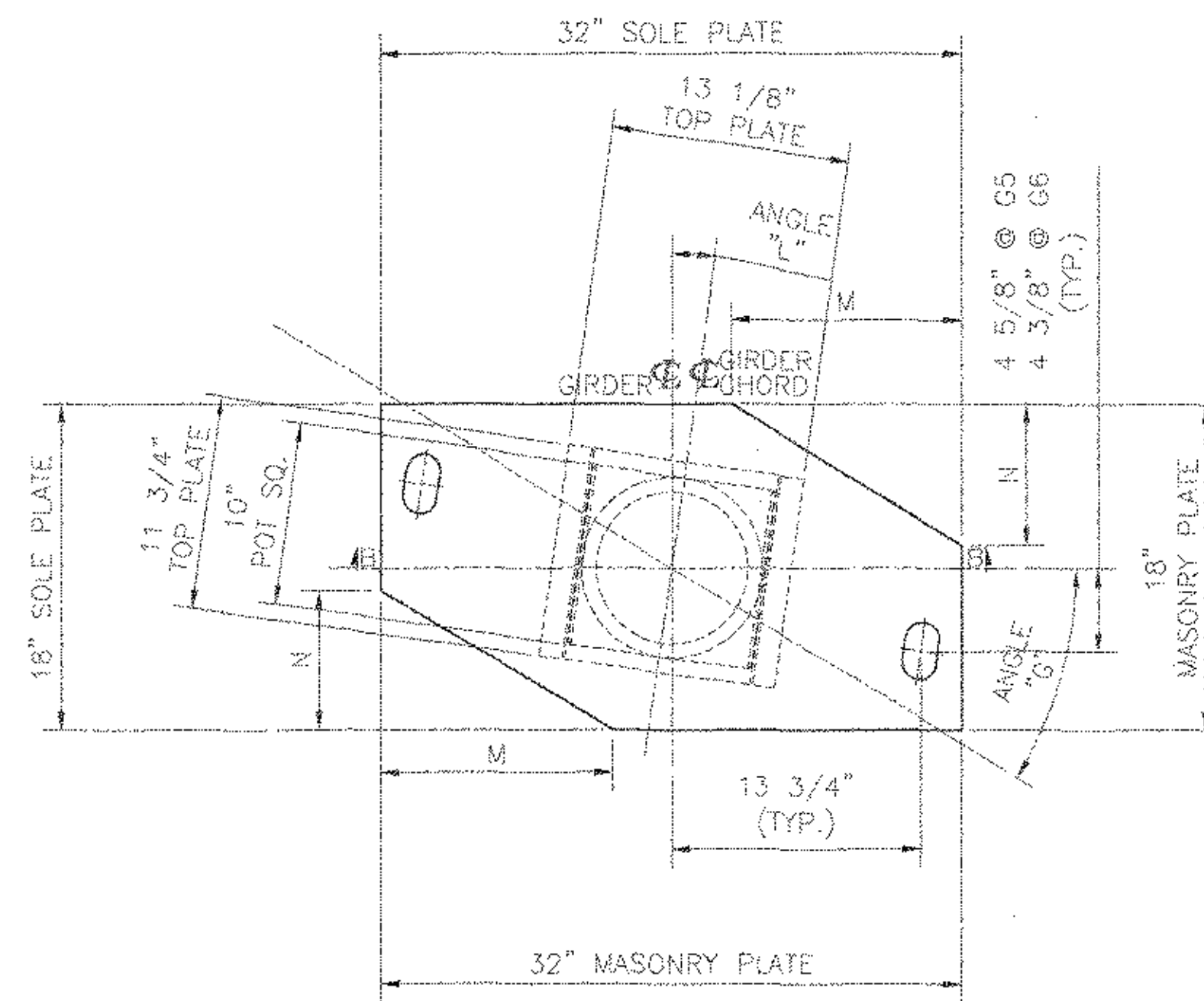


PLAN

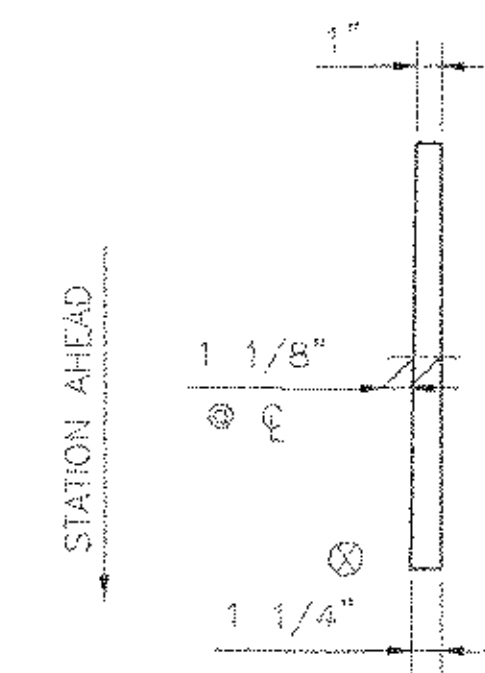


SIDE ELEVATION  
BEVELED SOLE PLATE ONLY

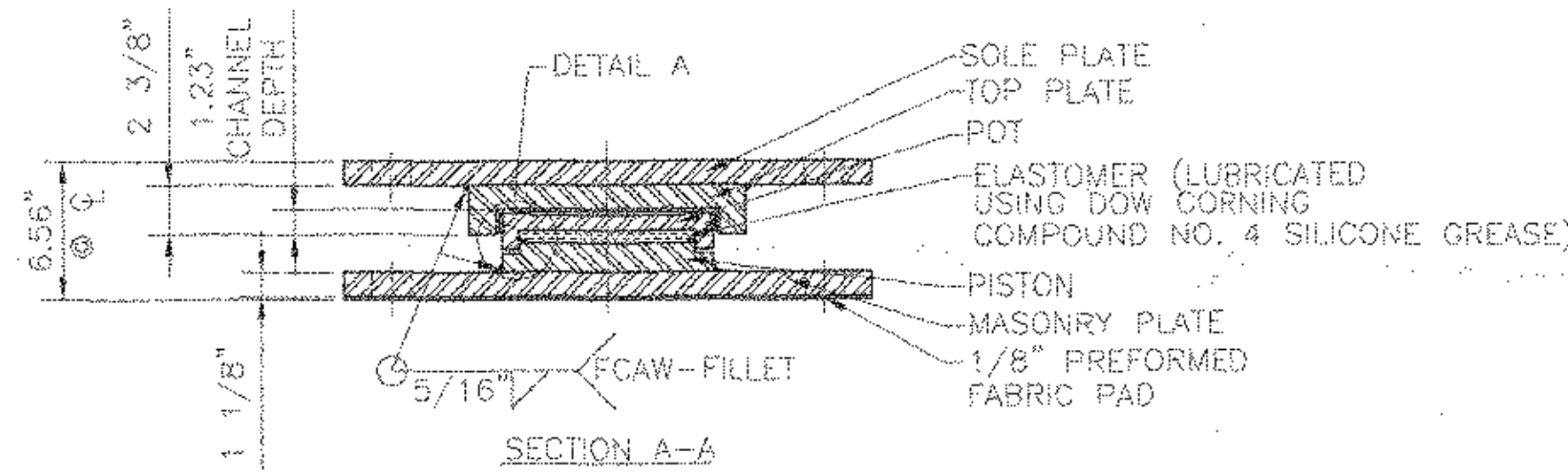
GIRDER	ANGLE "L"	ANGLE "G"	M	N
G1	8°04'48"	40°01'13"	9 1/2"	7 3/4"
G2	7°51'42"	39°05'34"	9 1/2"	7 3/4"
G3	7°39'24"	38°12'43"	9 1/2"	7 3/4"
G4	7°27'48"	37°22'27"	9 1/2"	7 3/4"
G5	7°16'51"	36°34'32"	13 1/8"	9 11/16"
G6	7°06'29"	35°48'49"	13 1/8"	9 11/16"



PLAN



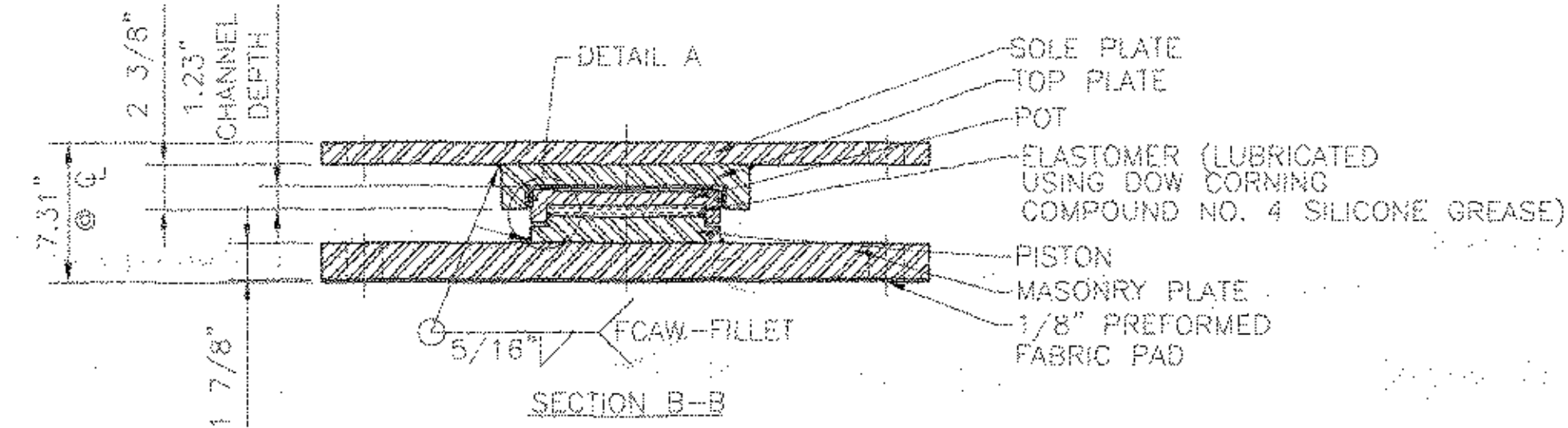
SIDE ELEVATION  
BEVELED SOLE PLATE ONLY



SECTION A-A

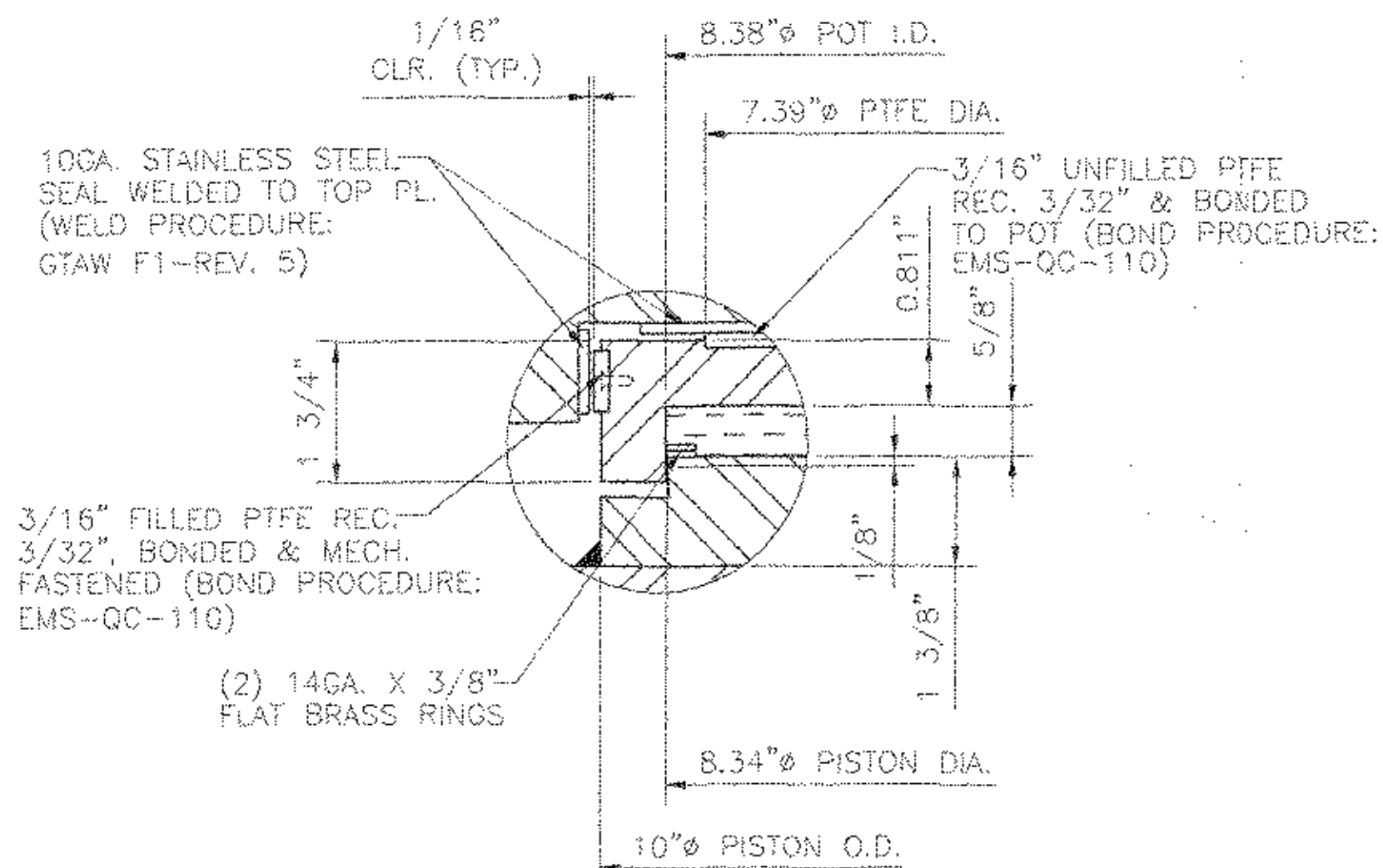
GUIDED EXPANSION POT BEARING  
LOCATION - ABUT. 1, G1-G4  
QUANTITY - 4  
DESIGN LOAD - 193 KIPS  
HORIZONTAL LOAD - 20 KIPS  
TOTAL LONGITUDINAL MOVEMENT - 1 3/4"  
TOTAL TRANSVERSE MOVEMENT - 1/8"  
MINIMUM ALLOWABLE DESIGN ROTATION - 0.015 RADIAN

NOTE:  
OVERALL HEIGHTS DIFFER FROM  
THOSE SHOWN ON THE CONTRACT  
PLANS. CONTRACTOR SHALL  
ADJUST PEDESTAL HEIGHTS TO  
ACCURATELY REFLECT THE HEIGHTS  
OF BEARINGS SUPPLIED.

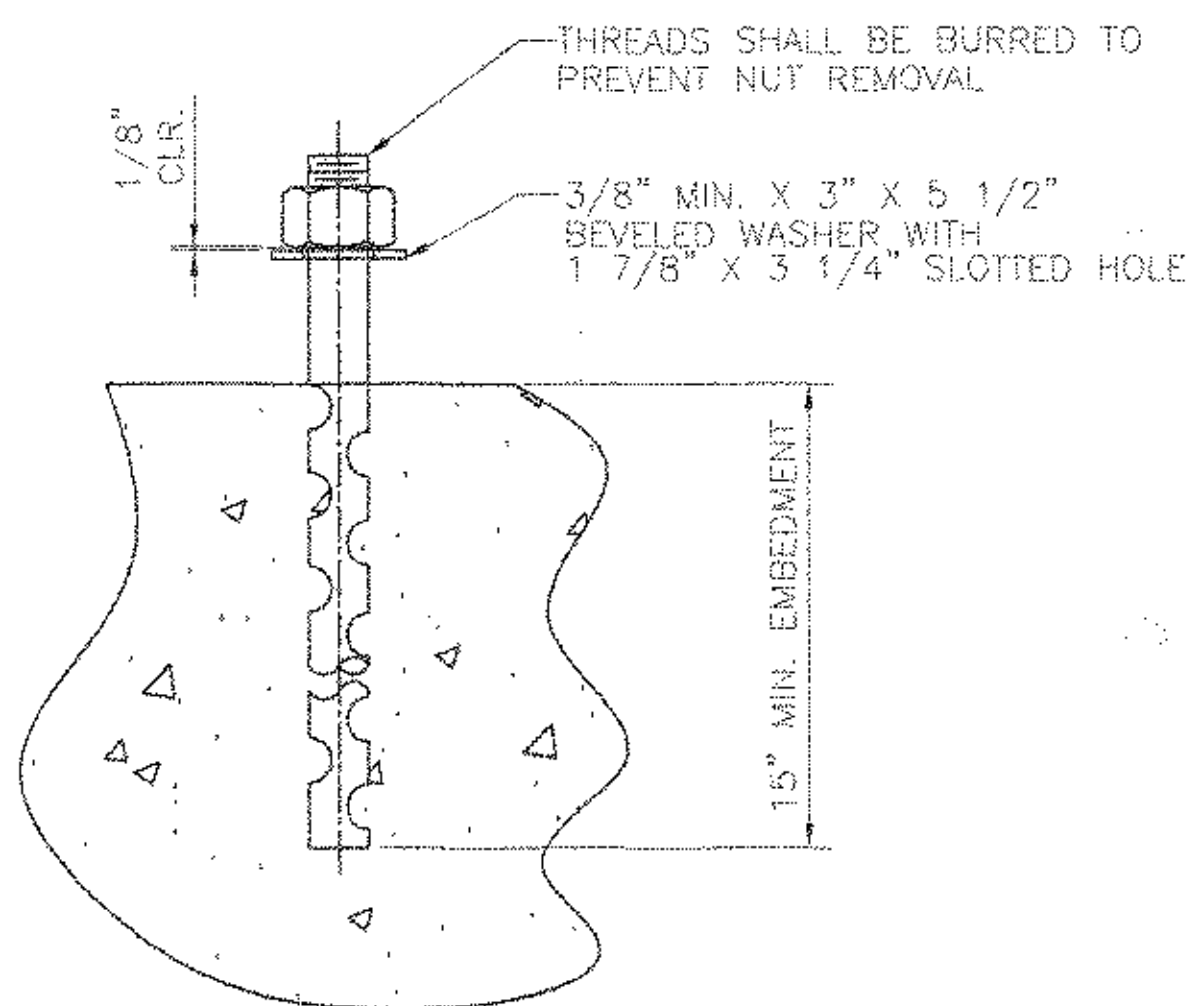


SECTION B-B

GUIDED EXPANSION POT BEARING  
LOCATION - ABUT. 1, G5 & G6  
QUANTITY - 2  
DESIGN LOAD - 193 KIPS  
HORIZONTAL LOAD - 20 KIPS  
TOTAL LONGITUDINAL MOVEMENT - 1 3/4"  
TOTAL TRANSVERSE MOVEMENT - 1/8"  
MINIMUM ALLOWABLE DESIGN ROTATION - 0.015 RADIAN



DETAIL A



ANCHOR BOLT DETAIL  
N.T.S.

1 1/2" x 25" LONG ASTM F1554 GR. 55  
SWAGED ANCHOR BOLT WITH 4" OF THREADS  
ONE END, ONE ASTM A563 HEAVY HEX NUT  
& ONE A36 PLATE WASHER.  
ALL GALVANIZED

MATERIAL:  
STEEL - ASTM A709 GR. 50W ZINC METALIZED  
ELASTOMER - AASHTO 50 DUROMETER NEOPRENE OR NATURAL RUBBER  
FLAT BRASS RINGS - ASTM B36 HALF HARD  
PREFORMED FABRIC PAD - AASHTO 18.4.10.1 DIV. II  
STAINLESS STEEL - ASTM A240 TYPE 304, 20 RMS FINISH OR LESS  
PTFE - ASTM D1457 VIRGIN UNFILLED & FILLED

NOTES:  
1. BEARINGS MUST NOT BE DISASSEMBLED  
2. ALL BEARINGS SHALL BE METALIZED AS PER SECTION 531.04(b) & 506.15 (a) & (b).  
AREAS OF METALIZED DAMAGED BY FIELD WELDS OR HANDLING SHALL BE REPAIRED  
PER SUPPLEMENTAL SPECIFICATION 513.06(f).  
3. LOCATION OF FABRICATION PLANT - 70 SOUTH ST., WALPOLE, MA 02081  
4. COSMEC INC. REPRESENTATIVE - MR. MATT McANDREWS (508-668-6600)  
5. ⊙ INDICATES THICK END OF BEVELED SOLE PLATE  
6. PROTECT PTFE & S.S. SURFACES FROM DIRT, WELD SPATTER, & ANY OTHER  
FOREIGN SUBSTANCES.

STATE OF VERMONT  
AGENCY OF TRANSPORTATION  
PROJ. NO. BRP 025-1(35)  
HIGHWAY VT 103  
VT 103 OVER THE WILLIAMS RIVER  
TOWN OF CHESTER

COSMEC, INC. 70 SOUTH STREET  
WALPOLE, MA. 02081  
SCALE: 1/8" = 1"  
DRAWN BY: NH CHECKED BY: MCM  
SHEET: 2 OF 3 DATE: 8/18/03 DATE: 8/28/03  
CUSTOMER: F.W. WHITCOMB S.B. NUMBER: 59903 DRAWING NUMBER: 3922 REV.