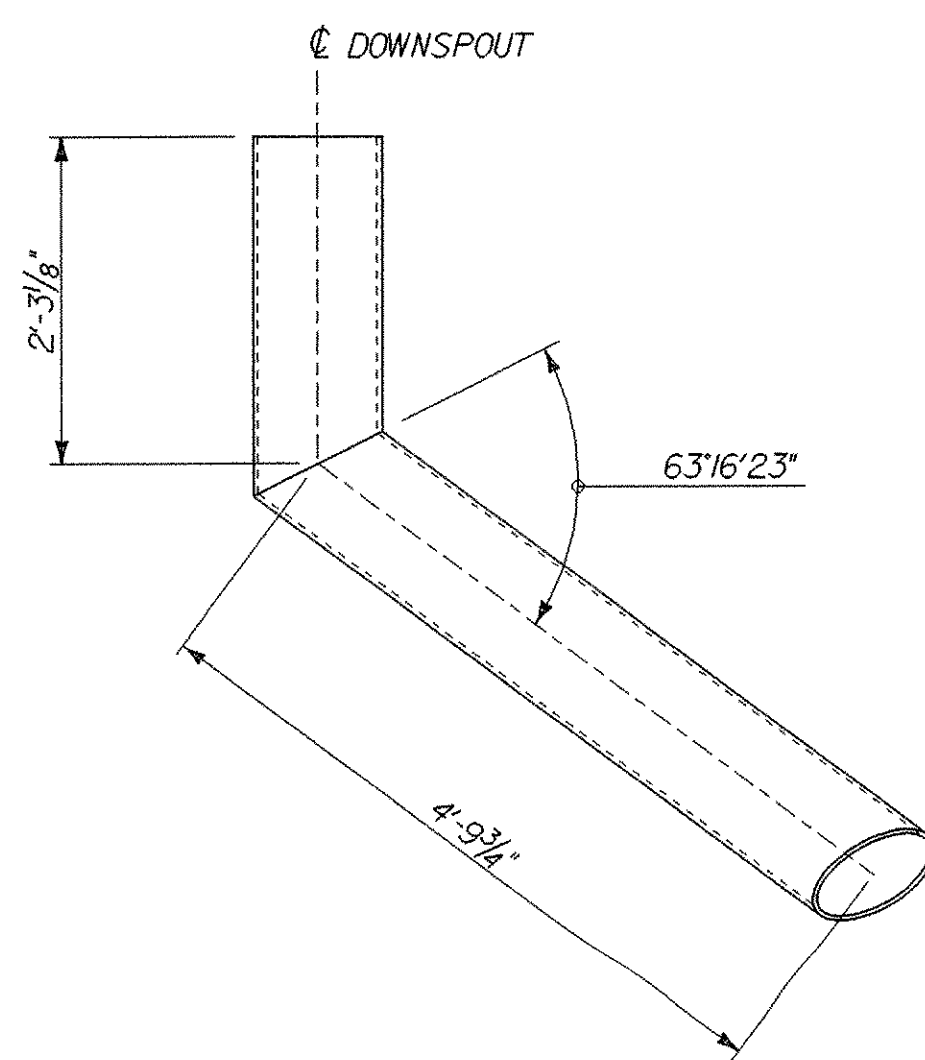
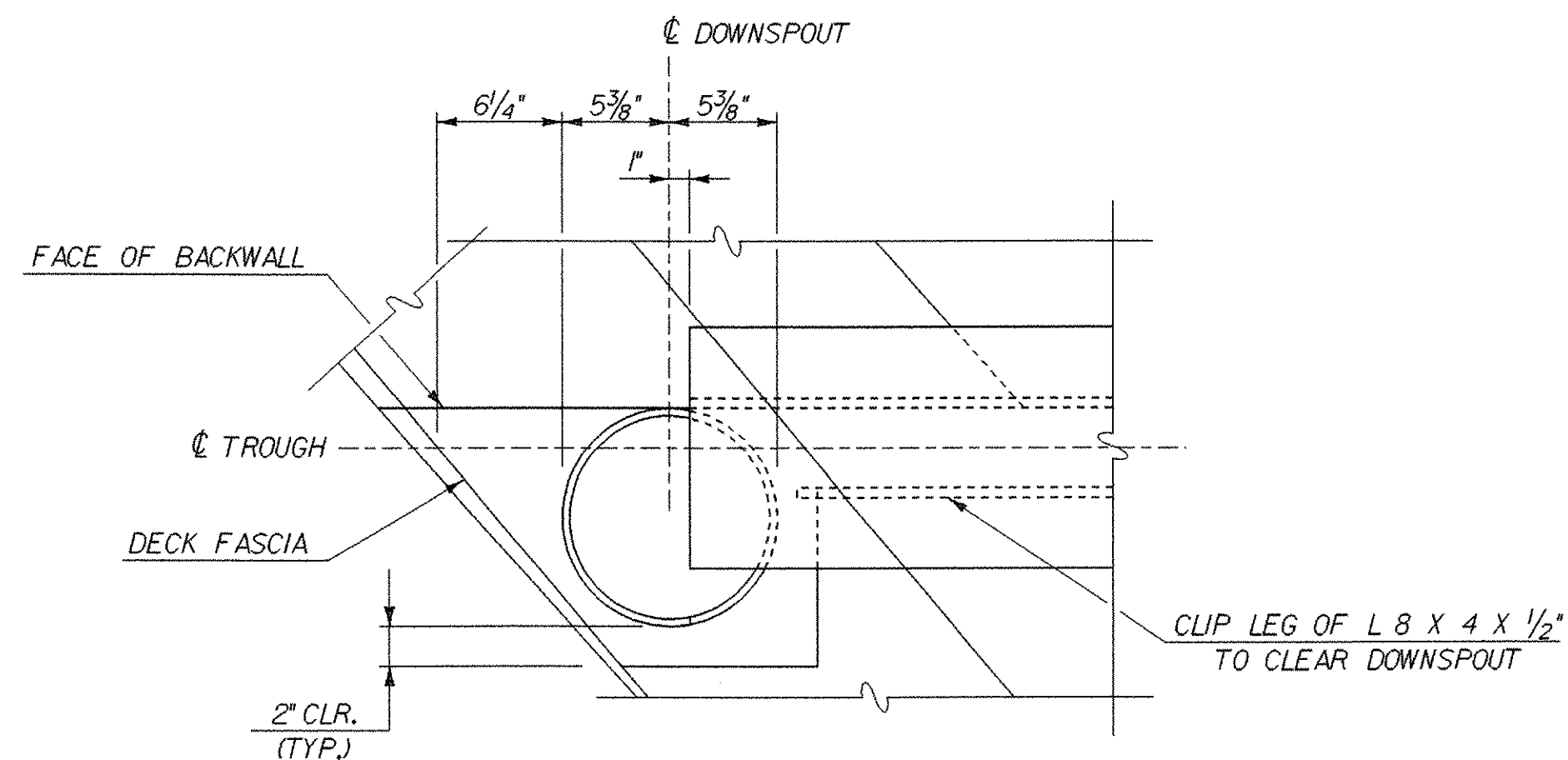


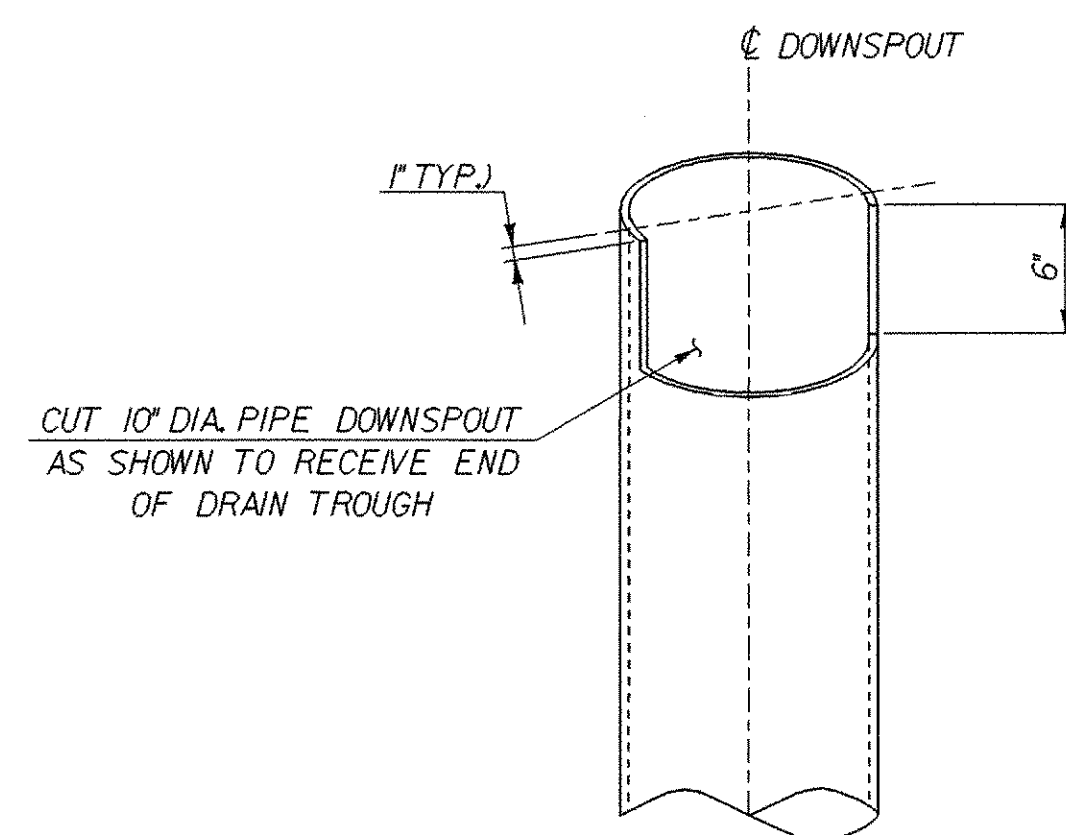
DOWNSPOUT ELEVATION
SCALE: 3/4" = 1'-0"
(PERPENDICULAR TO CENTERLINE TROUGH)



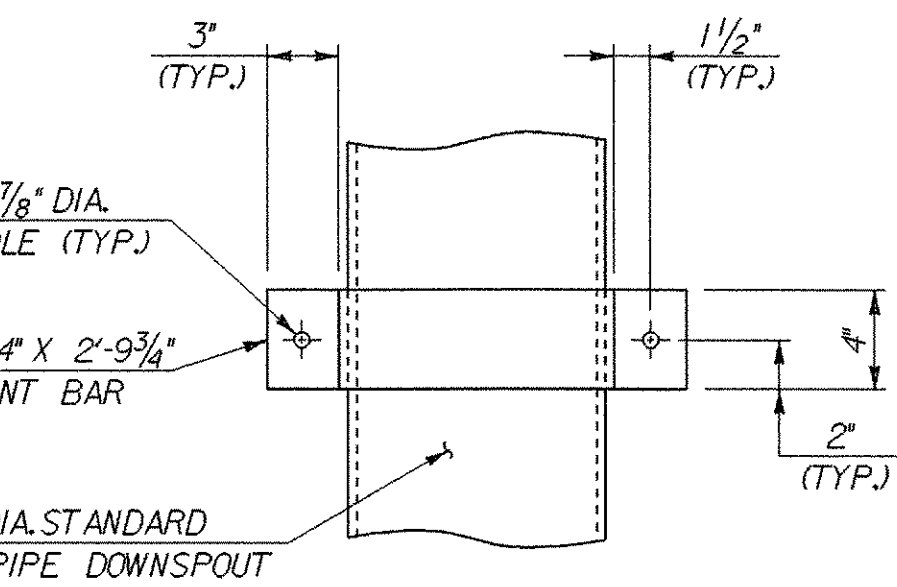
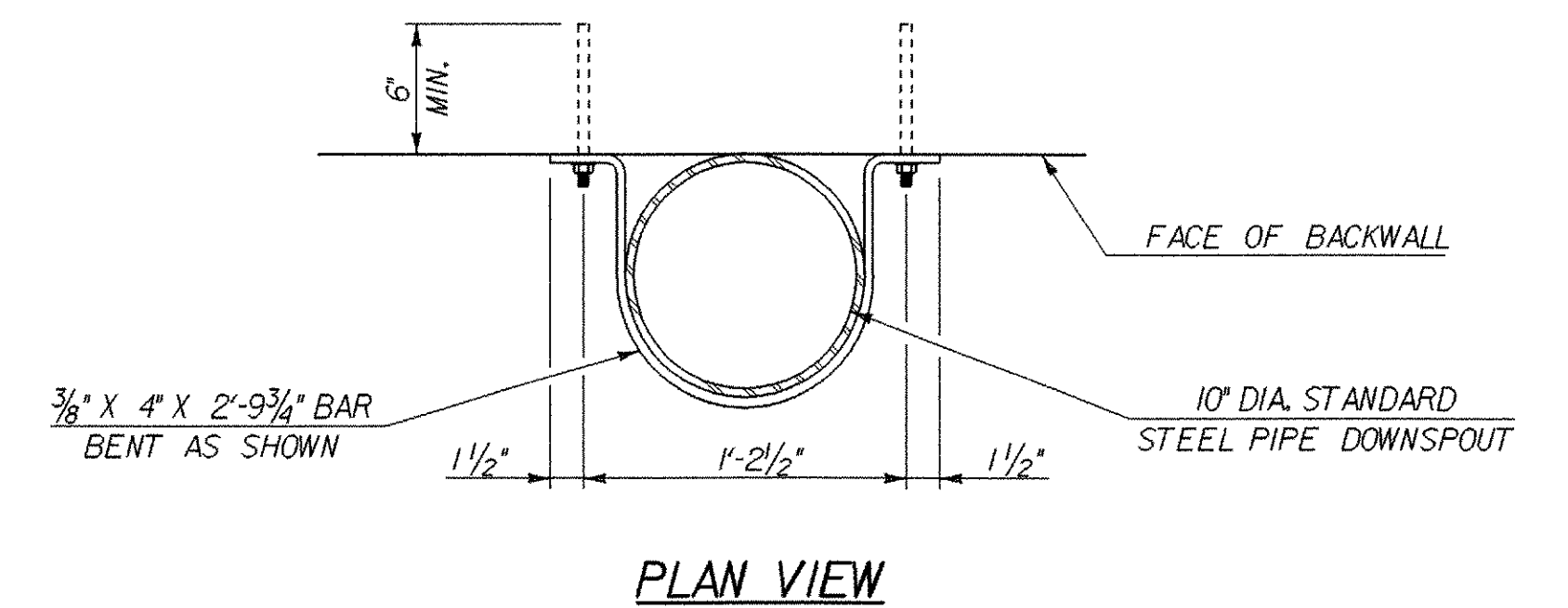
DOWNSPOUT FABRICATION DETAIL
SCALE: 3/4" = 1'-0"



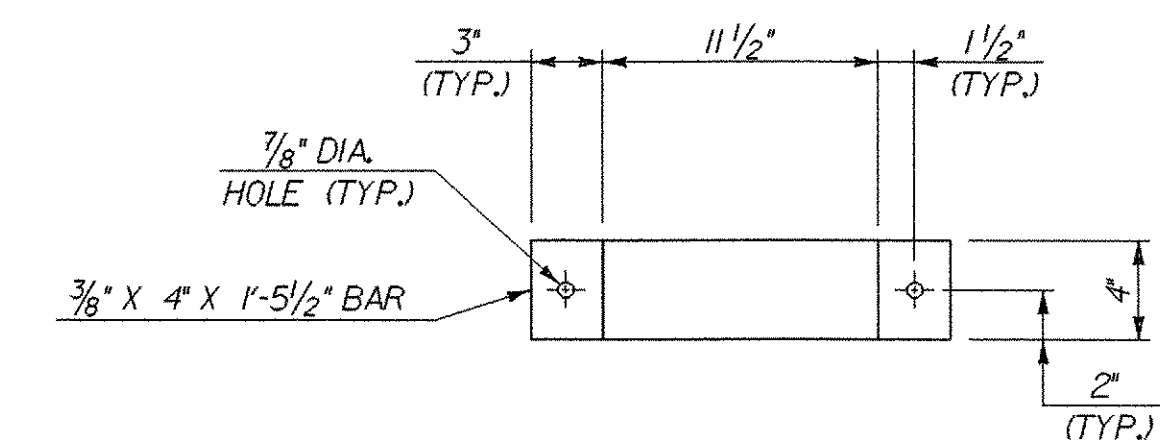
PLAN VIEW OF DECK BOXOUT FOR DOWNSPOUT
SCALE: 1 1/2" = 1'-0"



DOWNSPOUT CUTOUT FOR TROUGH
SCALE: 1 1/2" = 1'-0"



ELEVATION VIEW OF BRACKET "A"



ELEVATION VIEW OF BAR "B"

DETAILS FOR ATTACHING DOWNSPOUT TO ABUTMENT
SCALE: 1 1/2" = 1'-0"

DOWNSPOUT NOTES

- HOLLOW STRUCTURAL STEEL PIPE SHALL CONFORM TO ASTM A 501 OR A 53, TYPE S, GRADE B.
- ALL PLATES, BARS AND ANGLES SHALL CONFORM TO AASHTO M 270, GRADE 36.
- DOWNSPOUTS AND BRACKETS SHALL BE GALVANIZED IN ACCORDANCE WITH ASTM A 123 AFTER FABRICATION.
- ALL BOLTS AND RELATED HARDWARE SHALL BE ASTM A 307 AND SHALL BE GALVANIZED IN ACCORDANCE WITH ASTM A 153 (AASHTO M 232).
- ANY PLACE WHERE THE GALVANIZING HAS BEEN REMOVED FROM THE DOWNSPOUT OR BRACKETS, BY CUTTING, BURNING, WELDING, PLACING OR ANY OTHER MEANS, SHALL BE REPAIRED AS PER SUPPLEMENTAL SPECIFICATION 513.06(f).
- PAYMENT FOR ALL MATERIALS AND LABOR RELATED TO THE DOWNSPOUT ARE TO BE SUBSIDIARY TO THE ITEM 516.10, "BRIDGE EXPANSION JOINT".



STATE OF VERMONT AGENCY OF TRANSPORTATION	
Town Of CHESTER	Bridge No. 12
Highway No. VT 103	Log Sta. Surv. Sta.
VT 103 OVER THE WILLIAMS RIVER	
DOWNSPOUT DETAILS	
Designed By S. DELIA	Drawn By S. DELIA
Checked By T. GRANT	Date 10/00
PROJECT CHESTER	
PROJECT NO. BRF 025-1(35)	
I.G.C. Info. MA87bl3AStructures\zbl34c.jm.dgn zbl34c.jm.d	
Bridge Sheet No. BRII4	Sheet 58 of 79
PLOTTED 28-MAY-2003	