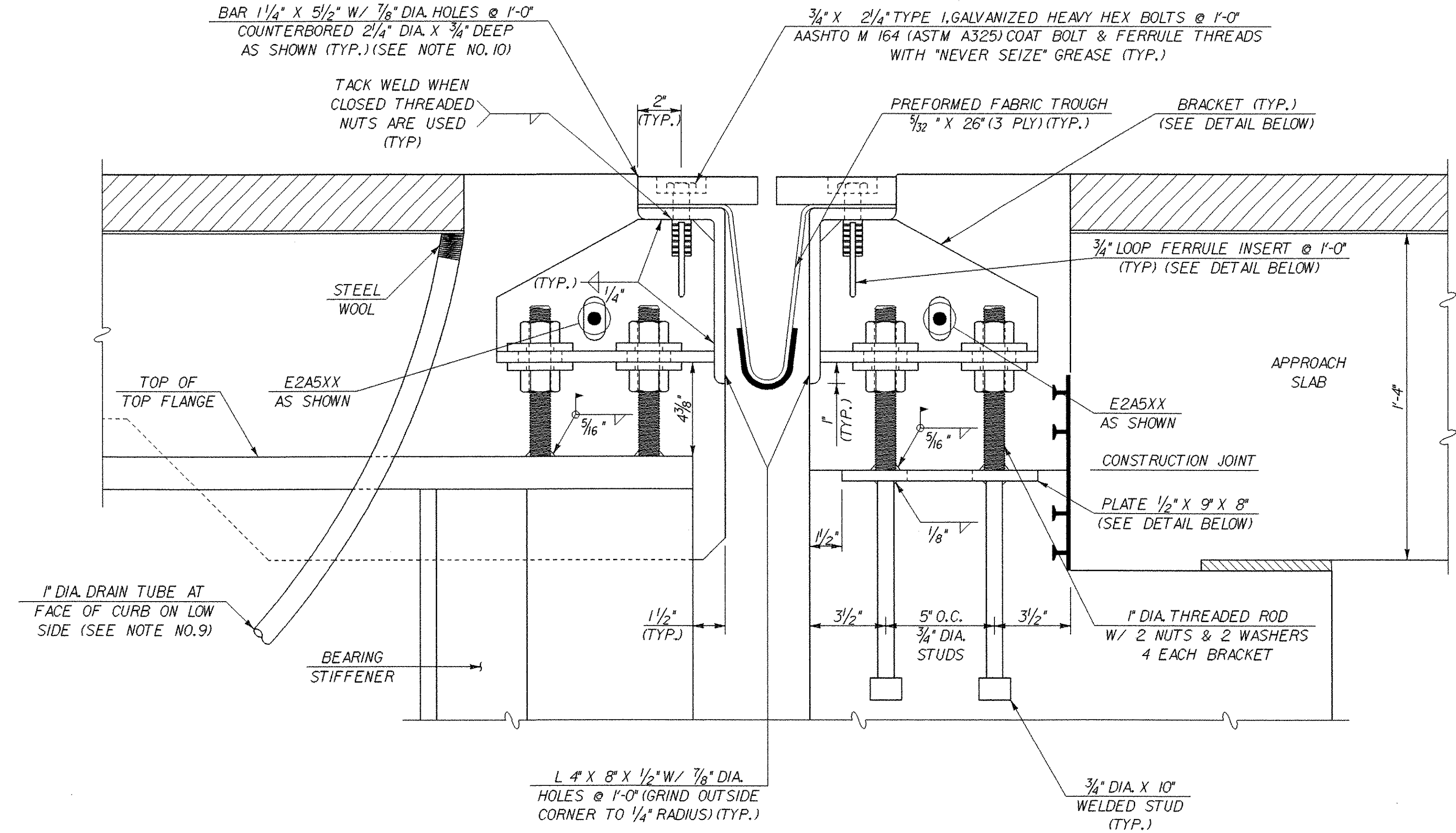
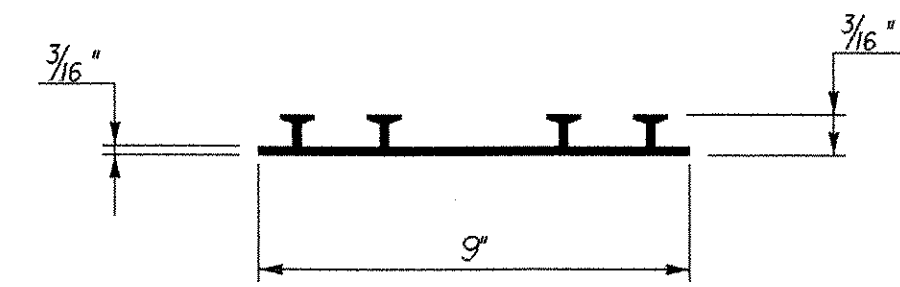


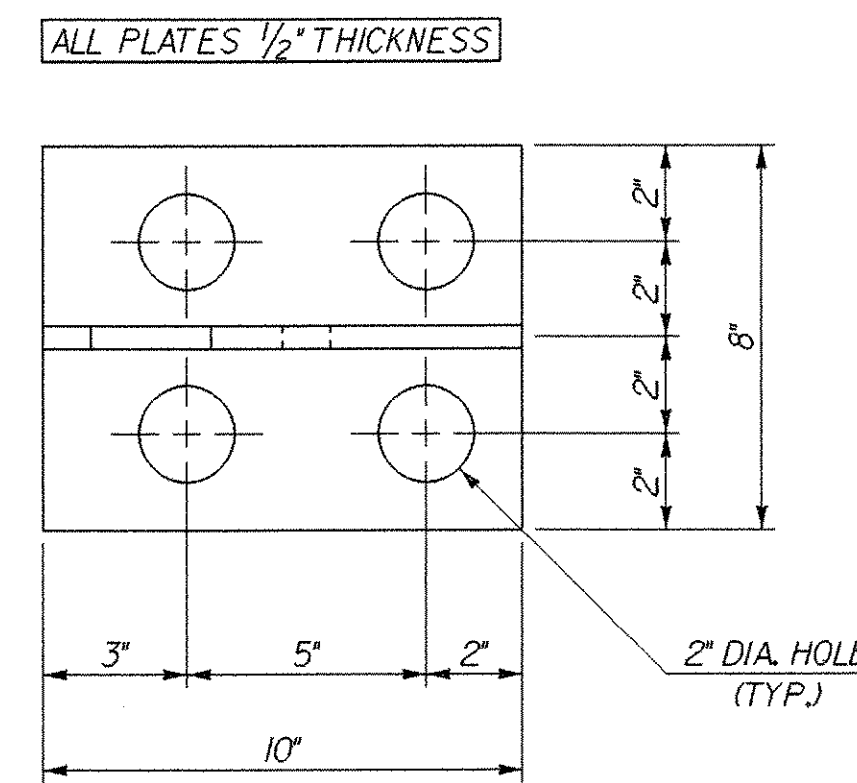
TYPICAL SECTION BETWEEN GIRDERS
SCALE: 3" = 1'-0"



TYPICAL SECTION AT GIRDERS
SCALE: 3" = 1'-0"



P.V.C. WATERSTOP FOR CONST. JOINTS
SCALE: 3" = 1'-0"



BRACKET PLAN
SCALE: 3" = 1'-0"

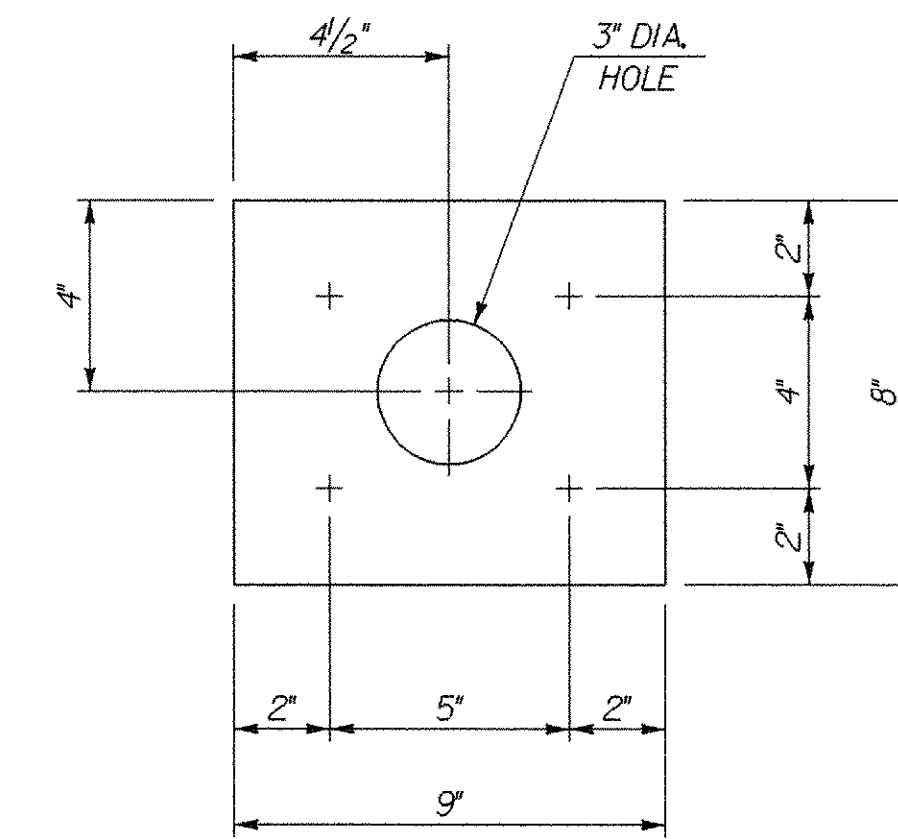
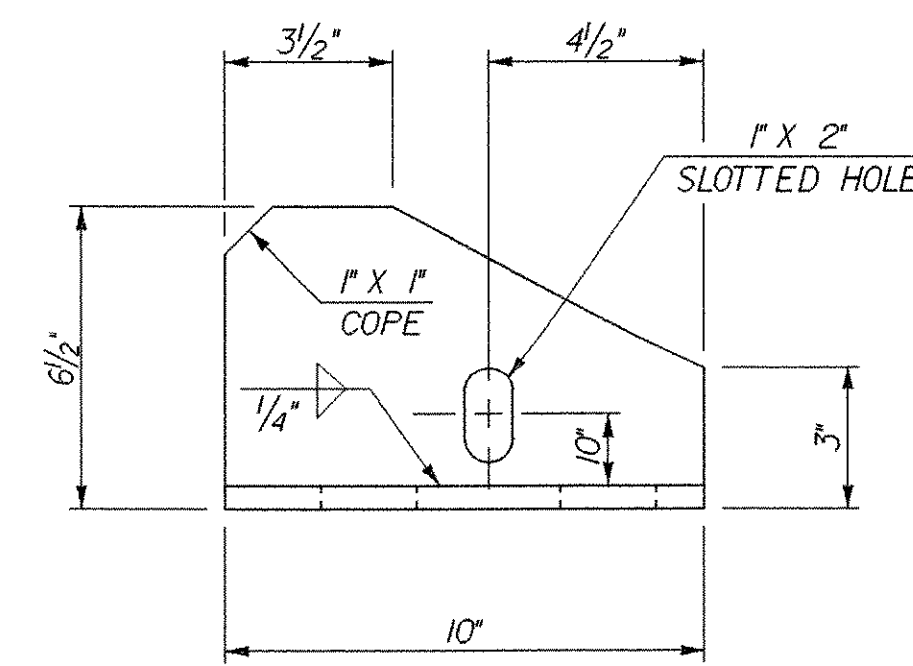
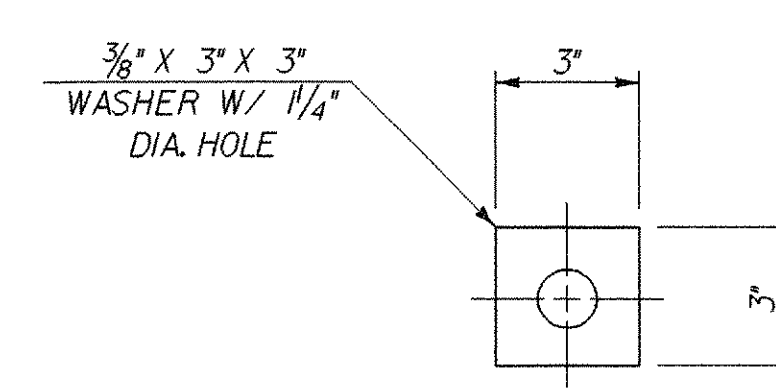


PLATE PLAN
SCALE: 3" = 1'-0"



BRACKET ELEVATION
SCALE: 3" = 1'-0"



WASHER FOR BRACKET
SCALE: 3" = 1'-0"

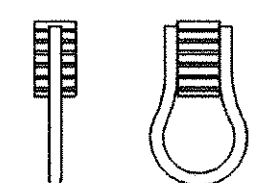
JOINT DIMENSION TABLE

TEMP.	"A" DIST.
0° F	1 1/4"
15° F	1 1/8"
30° F	1"
45° F	7/8"
60° F	3/4"
75° F	5/8"
90° F	1/2"
105° F	3/8"

"A" IS THE SETTING BEFORE DEAD LOADS ARE IN PLACE.

EXPANSION JOINT NOTES

- DETAILS ON THIS SHEET ARE FOR ITEM 516.10 "BRIDGE EXPANSION JOINT".
- PREFORMED FABRIC MATERIAL SHALL BE CONTINUOUS AND SHALL CONFORM TO SUBSECTION 707.07. THE HIGH END OF THE FABRIC TROUGH SHALL BE CLOSED BY FOLDING.
- BUTYL RUBBER TAPE SHALL CONFORM TO AASHTO SPECIFICATION M-198, TYPE II.
- THE FINAL FINISH OF THE EXPANSION DEVICE SHALL BE COVERED DURING THE PLACING OF BRIDGE DECK CONCRETE.
- ALL STEEL COMPONENTS SHALL BE AASHTO M270 GRADE 36 GALVANIZED OR METALIZED AS PER SUBSECTION 506.15 (a) OR (b) UNLESS OTHERWISE SPECIFIED.
- THE ITEM "BRIDGE EXPANSION JOINT" SHALL INCLUDE THE FABRICATION AND ERECTION OF THE COMPLETE JOINT ASSEMBLY INCLUDING ALL STEEL PLATES, BRACKETS, ANGLES, WELDED STUDS OR RODS, PREFORMED FABRIC DRAIN TROUGH MATERIAL AND PLASTIC DRAIN TUBES, BUTYL RUBBER TAPE AND ANY OTHER MISCELLANEOUS MATERIAL NECESSARY TO INSTALL JOINT.
- THE 4" X 8" X 1/2" ANGLES SHALL BE FURNISHED AS ONE CONTINUOUS PIECE. THE 1 1/8" X 5 1/8" BARS EACH SIDE OF THE JOINT SHALL BE PROVIDED IN TWO EQUAL LENGTHS.
- COAT CONCRETE CONTACT SURFACES WITH EPOXY BONDING COMPOUND MEETING THE REQUIREMENTS OF SUBSECTION 719.02. PAYMENT SHALL BE INCLUDED IN THE UNIT PRICE BID FOR ITEM 516.10 "BRIDGE EXPANSION JOINT".
- A 1" DIAMETER PLASTIC DRAIN TUBE (PER STD. SPEC. 740.01) SHALL BE INSTALLED AS SHOWN AT THE FACE OF CURB. THE UPPER END IS TO BE PLUGGED WITH STEEL WOOL AND THE LOWER END IS TO EXTEND BELOW THE BOTTOM OF THE ADJACENT STRINGER. THE DRAIN TUBES SHALL BE FASTENED TO THE STRINGERS USING A METHOD APPROVED BY THE ENGINEER.
- FILL COUNTERBORED HOLES IN THE JOINT PLATE WITH HOT POURED JOINT SEALER AFTER BOLT INSTALLATION. PAYMENT FOR THE WORK SHALL BE SUBSIDIARY TO ITEM 516.10.
- A DRIP BEAD OF 1/4" X 7" STRIP OF PREFORMED MATERIAL SHALL BE CEMENTED TO THE BOTTOM OF THE FABRIC TROUGH USING AN ADHESIVE APPROVED BY THE MANUFACTURER. THE DRIP BEAD SHALL BE APPLIED 1" FROM THE DOWNSPOUT END OF THE TROUGH.
- FABRIC TROUGH SHALL BE THOROUGHLY CLEANED AND FLUSHED AFTER PAVING OPERATION.
- THE EXPANSION JOINT SHALL BE SHOP ASSEMBLED AND SHIPPED AS ONE UNIT.
- THE COSTS FOR P.V.C. WATERSTOP SHALL BE INCLUDED IN THE UNIT PRICE BID FOR CONCRETE. OTHER CONFIGURATIONS MAY BE USED UPON APPROVAL OF THE STRUCTURES ENGINEER.



NOTE: CLOSED THREADED FERRULE NUTS WITHOUT ANCHOR LOOPS MAY BE USED.

LOOP FERRULE INSERT DETAIL
SCALE: 3" = 1'-0"

STATE OF VERMONT AGENCY OF TRANSPORTATION

Town Of **CHESTER** Bridge No. **12**

Highway No. **VT 103** Log Sta.

VT 103 OVER THE WILLIAMS RIVER

EXPANSION JOINT DETAILS

Designed By **L.WIXSON** Drawn By **P.DUSTIN**

Checked By **T.GRANT** Date **10/00** Bridge Design Supervisor **M.ZYDEL** Date

PROJECT **CHESTER** PROJECT NO. **BRF 025-1(35)**

I.G.C. Info. **M:\87\134\Structures\zbl34c\j.dgn** **zbl34c\j.dj**

Bridge Sheet No. **BR12** Sheet **56** of **79**

PLOTTED **28-MAY-2003**

