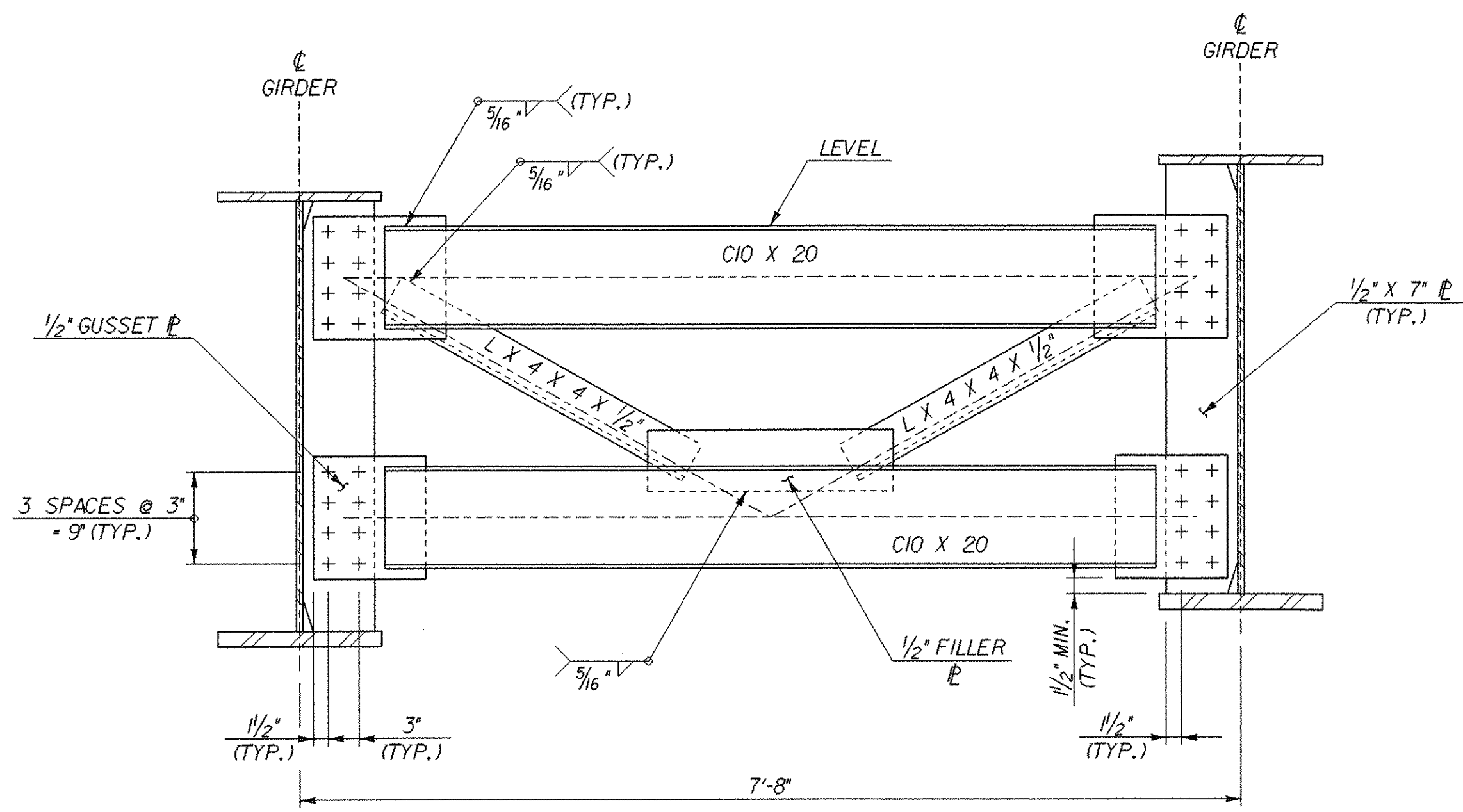
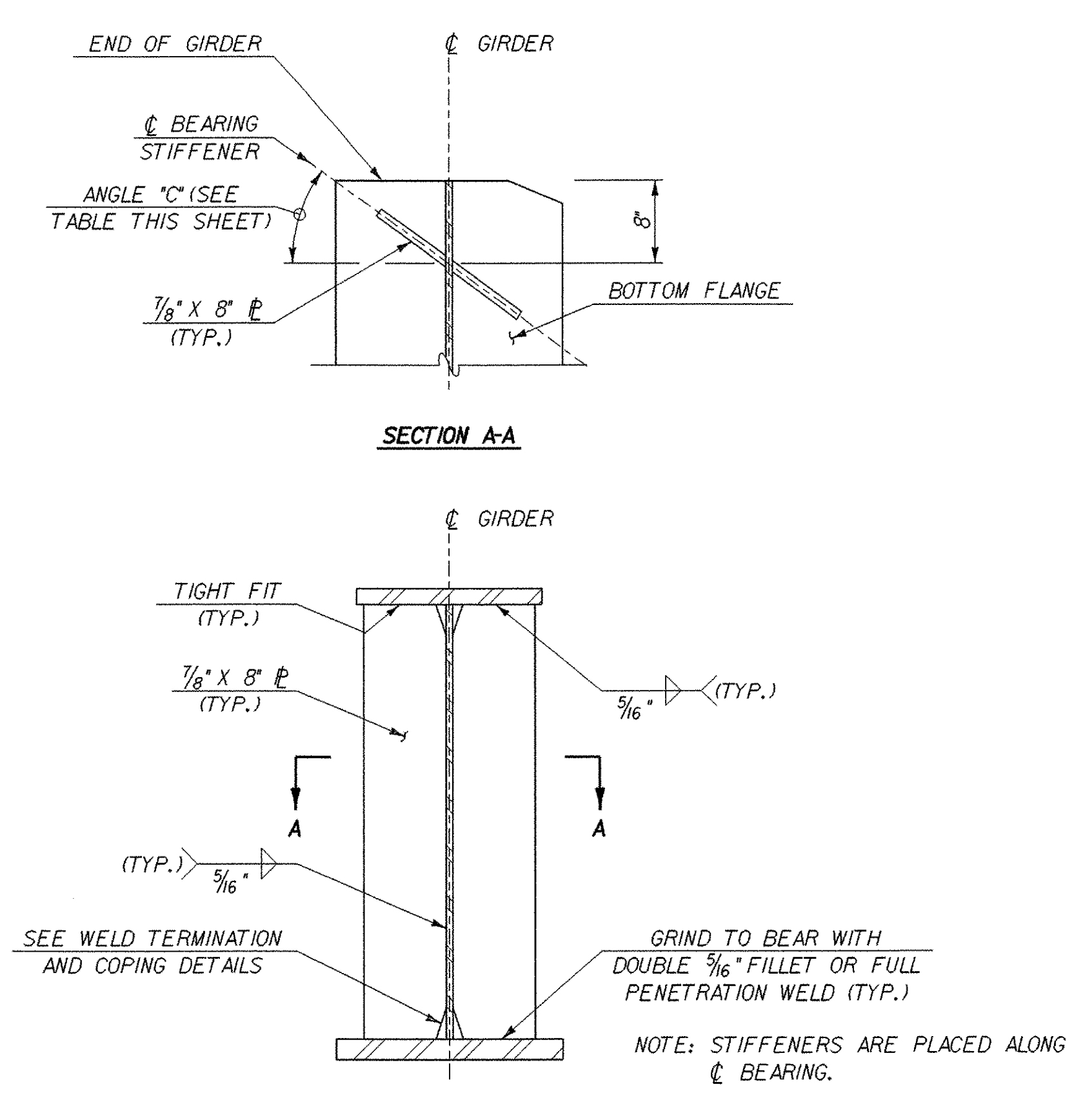


ABUTMENT CROSS FRAME
SCALE: 1" = 1'-0"

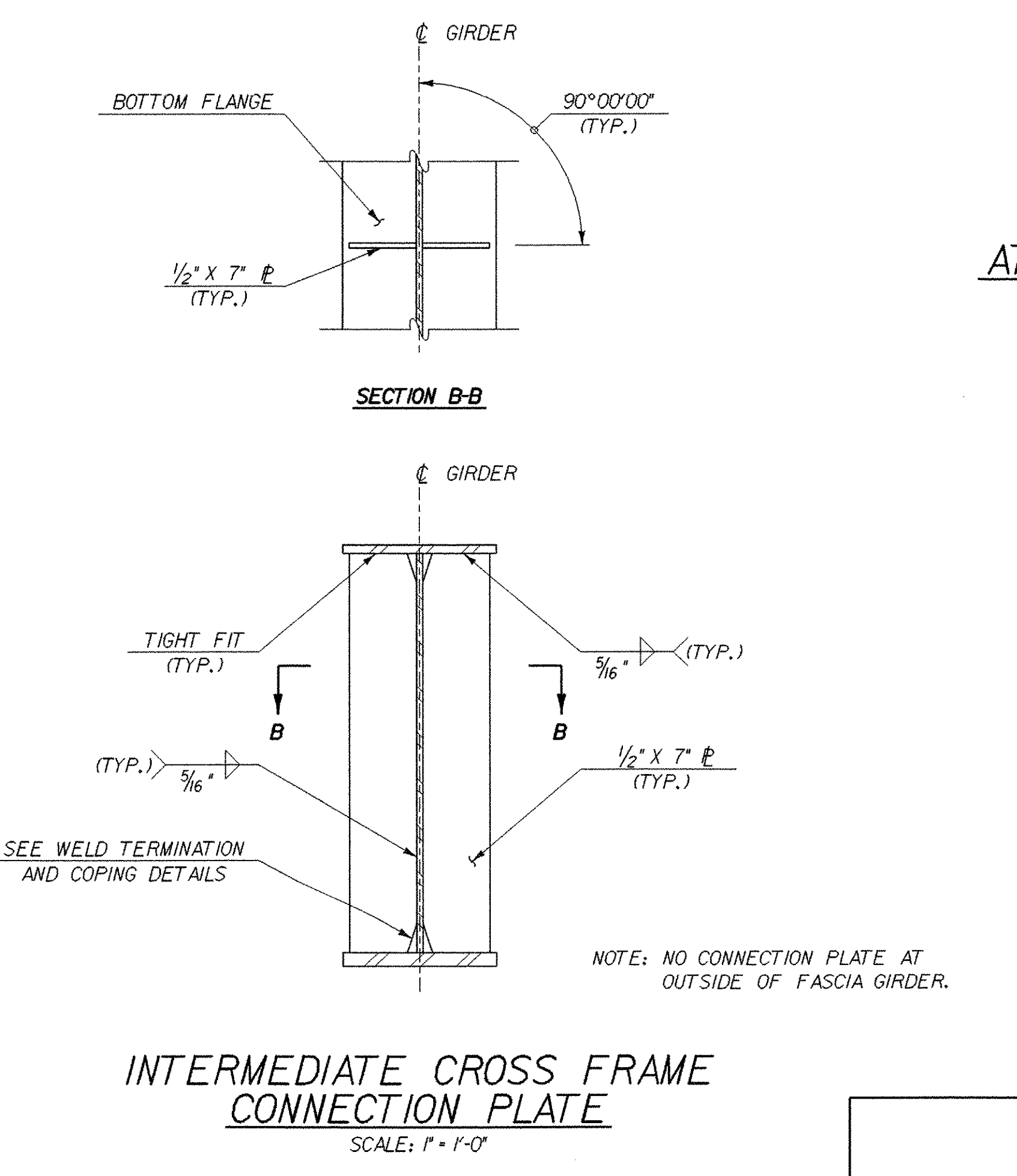


INTERMEDIATE CROSS FRAME
SCALE: 1" = 1'-0"

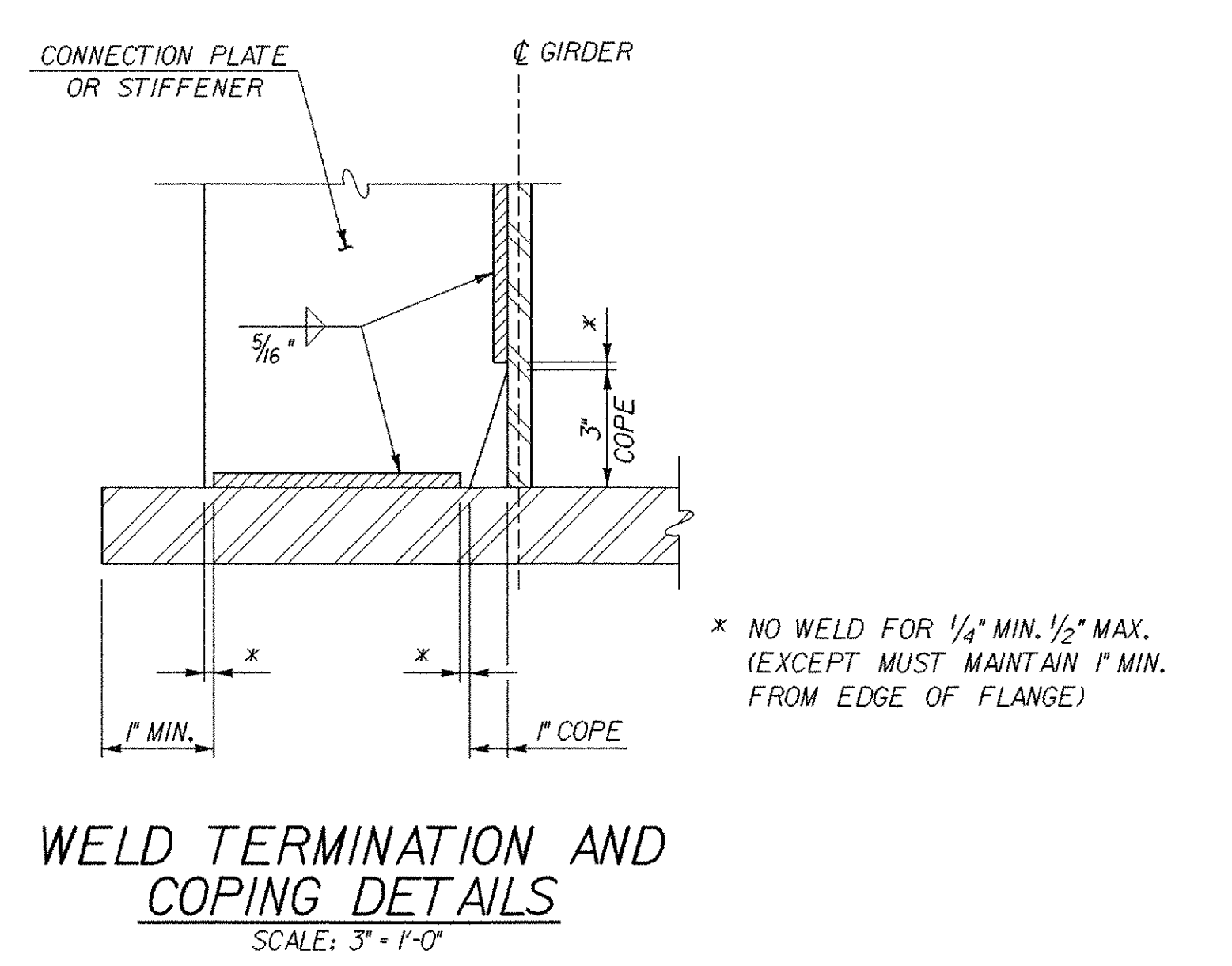
TABLE OF BEARING STIFFENER ANGLES		
GIRDER NO.	ABUTMENT NO. 1 DIMENSION °C	ABUTMENT NO. 2 DIMENSION °C
1	23°51'37"	40°01'13"
2	23°22'10"	39°05'34"
3	22°53'55"	38°12'43"
4	22°26'50"	37°22'27"
5	22°00'50"	36°34'32"
6	21°35'50"	35°48'49"



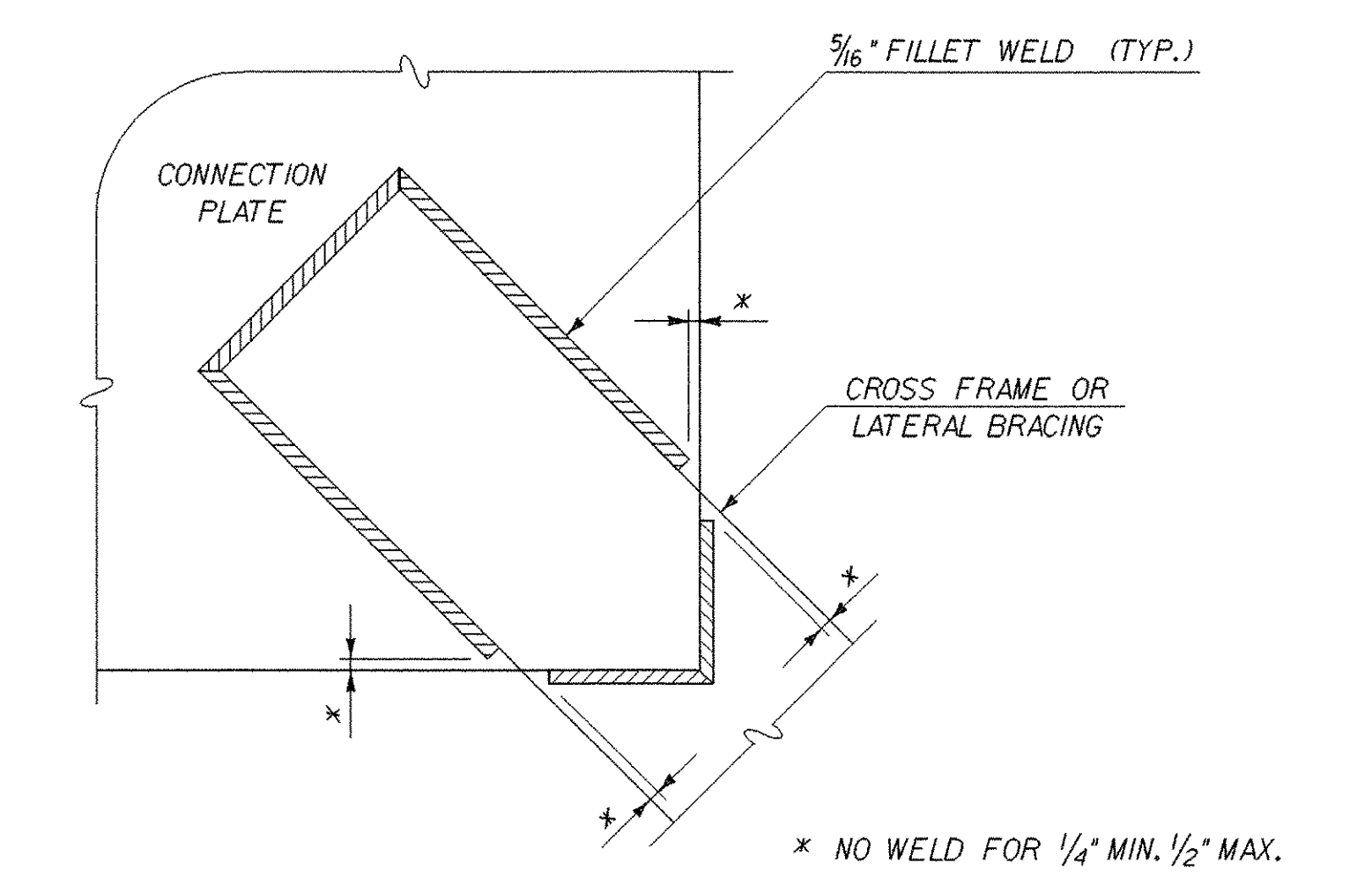
ABUTMENT BEARING STIFFENER
SCALE: 1" = 1'-0"



INTERMEDIATE CROSS FRAME CONNECTION PLATE
SCALE: 1" = 1'-0"



WELD TERMINATION AND COPING DETAILS
SCALE: 3" = 1'-0"



WELD LOCATION DETAIL AT CROSS FRAMES AND LATERAL BRACING
SCALE: 3" = 1'-0"

NOTES

1. FOR SPACING OF CROSS FRAMES, SEE FRAMING PLAN DETAIL ON BRIDGE SHEET BR108.

STATE OF VERMONT AGENCY OF TRANSPORTATION

Town Of **CHESTER** Bridge No. **12**

Highway No. **VT 103** Log Sta. Surv. Sta.

VT 103 OVER THE WILLIAMS RIVER

CROSS FRAME DETAILS

Designed By **L.WIXSON** Drawn By **P.DUSTIN**

Checked By **T. GRANT** Date **10/00** Bridge Design Supervisor **M. ZYDEL** Date

PROJECT **CHESTER** PROJECT NO. **BRF 025-1(35)**

I.G.C. Info. **M:\87b134\Structures\zbl34ccf.dgn** zbl34ccf.j

Bridge Sheet No. **BR109** Sheet **53** of **79**

PLOTTED **28-MAY-2003**

