

REMOVAL AND DISPOSAL OF GUARD RAIL

ML 201+43 LT. - ML 201+80 LT.
 ML 201+00 RT. - ML 201+80 RT.
 ML 202+82 RT. - ML 203+30 RT.
 ML 202+75 RT. - TH #6 21+20 RT.

ANCHOR FOR STEEL BEAM RAIL

ML 201+19 LT.
 ML 200+69 RT.
 ML 204+30 LT.
 TH #6 21+02.5 RT.

STEEL BEAM GUARD RAIL

ML 201+08 LT. - ML 201+71 LT.
 ML 200+58 RT. - ML 201+55 RT.
 ML 203+77 LT. - ML 204+43 LT.
 TH #6 20+79 RT. - TH #6 21+16 RT.

HEAVY DUTY STEEL BEAM GUARD RAIL

ML 201+71 LT. - ML 201+96 LT.
 ML 201+55 RT. - ML 201+80 RT.
 ML 203+52 LT. - ML 203+77 LT.
 ML 202+59 RT. - TH #6 20+79 RT.

CAST IN PLACE CONCRETE BRIDGE RAIL

ML 201+96 LT. - ML 203+52 LT.
 ML 201+80 RT. - ML 202+94.5 RT.

REMOVING AND RESETTING FENCE

TH #6 20+81 RT. - TH #6 21+46 RT.

EXISTING DRAINAGE

2 TH #6 21+40 EXISTING 2.5' X 3.5' CGMP W/ DI- RETAIN

UNDERDRAIN

1 ML 203+75 LT. - ML 205+00 LT.
 NEW 6" UNDERDRAIN TO
 OUTLET INTO NEW DI

NEW DRAINAGE

2 ML 201+75 LT
 NEW 18" X 20" PCCSP (.064), CAAP
 (.060), RCP CL. III, OR CPEP (SL) W/
 MES AND PRC PIPE DI; STONE FILL,
 TYPE I PAD @ OUTLET

3 ML 203+75 LT
 NEW 18" X 30" PCCSP (.064), CAAP
 (.060), RCP CL. III, OR CPEP (SL) W/
 MES AND PRC PIPE DI; STONE FILL,
 TYPE I PAD @ OUTLET

BENCHMARKS

BM 2
 RR SPIKE IN TREE
 ELEV 600.75'

BM 3
 CHISELED SQUARE ON NE BRIDGE CURB
 ELEV 597.87'

BITUMINOUS CONCRETE SIDEWALK
 ML 201+00 LT. - ML 201+93 LT.
 ML 203+51 LT. - ML 205+00 LT.

CAST-IN-PLACE CONCRETE CURB, TYPE B
 ML 201+00 LT. - ML 201+93 LT.
 ML 203+51 LT. - ML 205+00 LT.

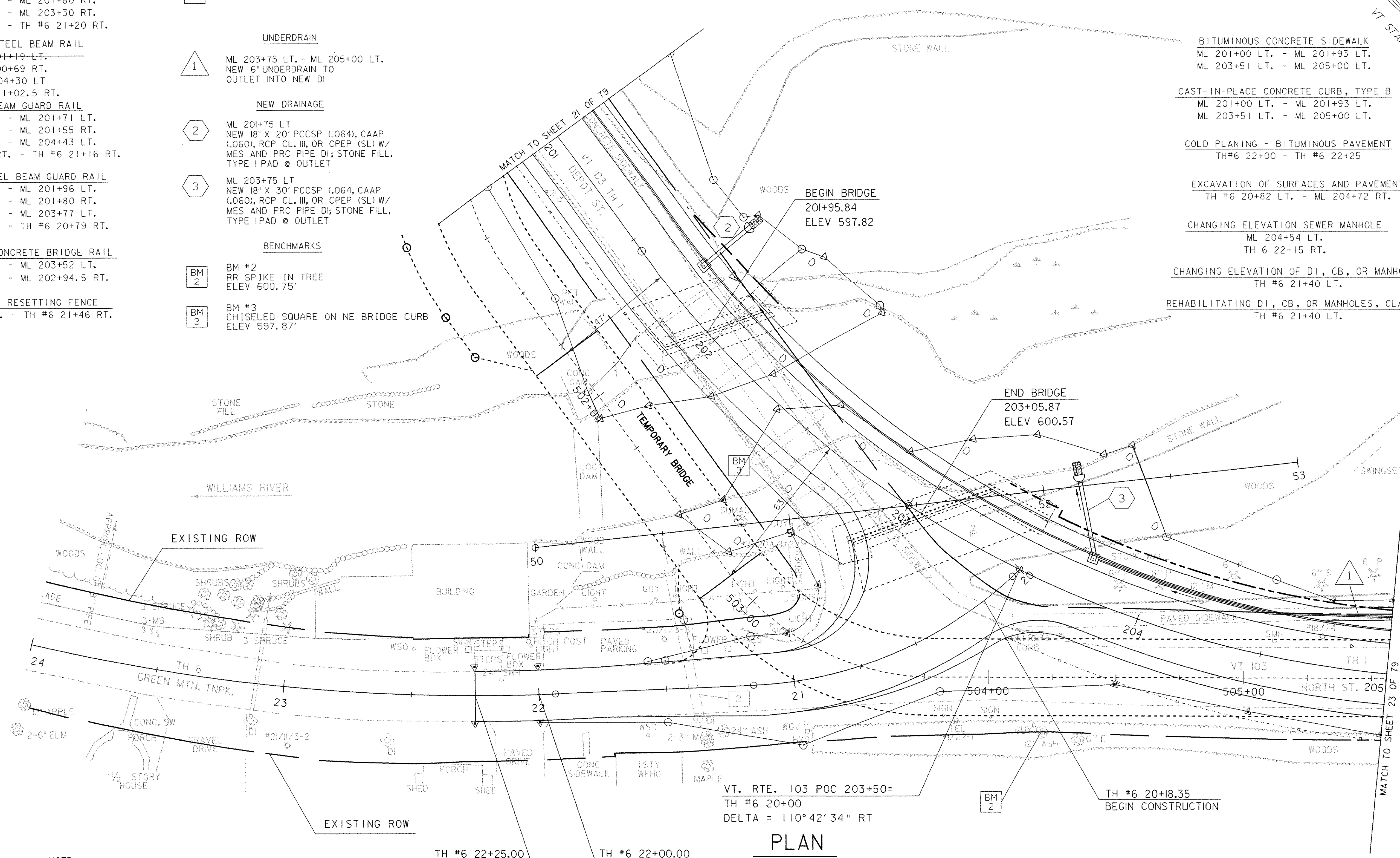
COLD PLANING - BITUMINOUS PAVEMENT
 TH#6 22+00 - TH #6 22+25

EXCAVATION OF SURFACES AND PAVEMENT
 TH #6 20+82 LT. - ML 204+72 RT.

CHANGING ELEVATION SEWER MANHOLE
 ML 204+54 LT.
 TH #6 22+15 RT.

CHANGING ELEVATION OF DI, CB, OR MANHOLES
 TH #6 21+40 LT.

REHABILITATING DI, CB, OR MANHOLES, CLASS 1
 TH #6 21+40 LT.

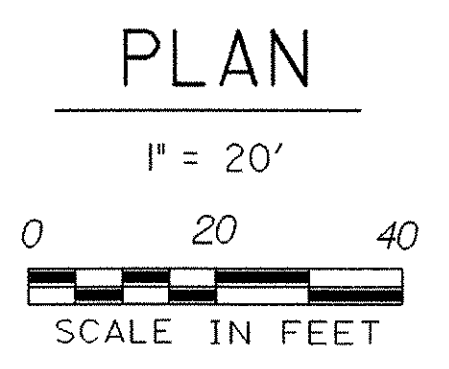


NOTE:
 BEGIN TEMPORARY BRIDGE CENTER LINE FROM
 ML STA. 201+68.44 OFFSET 47.29' RT

NOTE:
 END TEMPORARY BRIDGE CENTER LINE FROM
 ML STA. 202+62.29 OFFSET 63.11' RT

LEGEND
 ——— LIMITS OF WETLAND

VT. RTE. 103 POC 203+50=
 TH #6 20+00
 DELTA = 110° 42' 34" RT



DATUM
 VERTICAL NGVD 1929
 HORIZONTAL NAD 1927

SURVEYED BY GILMAN DATE 12/92
 DRAWN BY L. BULLOCK DATE 1/93
 SQUAD LEADER PORTALUPI
 DESIGN FILE NO. M:\1549101\VAOT-Chester Curv
 \HWY\DRAW\zfi34bdr.dgn
 IPARM FILE zfi34i2.i DATE PLOTTED 28-MAY-2003

PROJ. NAME CHESTER
 PROJ. NO. BRF 025-(135)
 SHEET 22 OF 79 SHEETS