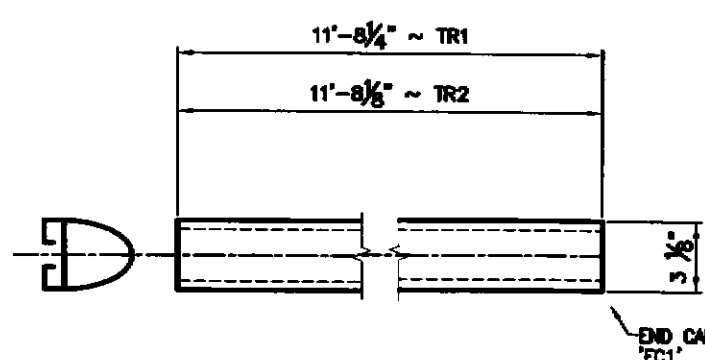


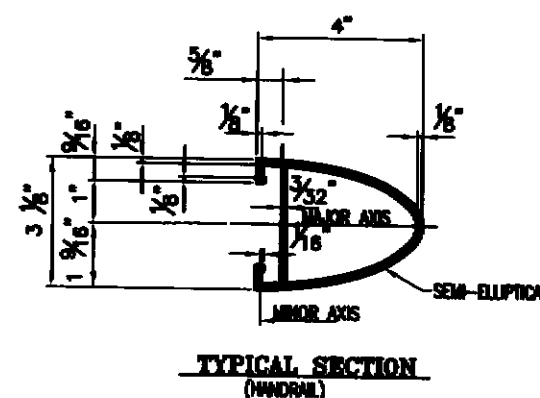
ONE REQ'D - HANDRAIL "TR3"
11'-6\"/>

MK.	QTY	CALL (ALONG FF RAIL)	LENGTH	ARC LGTH	"A"	"B"	MO	CHORD	RADIUS	MATL FOR BENDING
MR1	1	21'-8 3/4"	21'-0 1/16"	10'-5 1/4"	11'-3 1/2"	5'-3 7/16"	8 7/8"	10'-0"	16'-0"	+2'-6"
BR1	1	21'-8 3/4"	21'-0 1/16"	10'-5 1/4"	11'-3 1/2"	5'-3 7/16"	8 7/8"	10'-0"	16'-0"	+2'-6"
MR3	1	12'-3 13/16"	10'-8 1/2"	10'-4 13/16"	1'-11"	4'-11 1/4"	1'-3 1/4"	9'-8 11/16"	10'-0"	+2'-6"
BR3	1	12'-4"	10'-8 5/16"	10'-5"	1'-11"	4'-11 7/16"	1'-3 1/4"	9'-8 11/16"	10'-0"	+2'-6"
MR2	1	21'-8 3/4"	21'-0 1/16"	10'-5 1/4"	11'-3 1/2"	5'-3 7/16"	8 7/8"	10'-0"	16'-0"	+2'-6"
BR2	1	21'-8 3/4"	21'-0 1/16"	10'-5 1/4"	11'-3 1/2"	5'-3 7/16"	8 7/8"	10'-0"	16'-0"	+2'-6"



ONE REQ'D - HANDRAIL "TR1"
(FRONT ELEVATION VIEW)

ONE REQ'D - HANDRAIL "TR2"
(FRONT ELEVATION VIEW)



TYPICAL SECTION (HANDRAIL)

PROJECT No. 207 023-10) ITEM No. 501346

APPROVED: _____ DATE: _____

FOR: F. R. LAFAYETTE, INCORPORATED
1518 OBSERVATION ROAD
PITTSBURGH, PENNSYLVANIA 15203

FOR: F. R. LAFAYETTE, INCORPORATED
VERMONT AGENCY OF TRANSPORTATION
TOWN OF FERRIS, COUNTY OF FERRIS
BRIDGE BALKS FOR BRIDGE #10, VT. RR. 104 LINCOLN AVENUE
3. ALUMINUM APPROACH RAIL - RAIL DETAILS

DATE: 04/11/09 BY: ARS/SD DATE: 11/28/09
CHECKED: 12/28/09 DRAWN: ARS/SD DATE: 11/28/09

1. SUBMIT APPROVED: _____ DATE: _____

by: *ARC* DATE: *2/2/10*

ANODIZED
(SEE NOTES ON LIST)