

**OFFSET BLOCK CHART FOR WW #2 APPROACH
POSTS P18 - P20**

POST NO.	OFFSET BLOCK	QTY	OFFSET BLOCK ~ POST MFG. DIMENSIONS					REV	
			A	B	C	D	E		F (O.C.)
P18	OB18	1	2"	1'-2 11/16"	1'-7 11/16"	0	2"	1'-7 5/8"	SO
P19	OB19	1	2"	1'-2 5/8"	1'-7 5/8"	0	2"	1'-7 5/8"	SO
P20	OB20	1	2"	1'-2 9/16"	1'-7 9/16"	0	2"	1'-7 9/16"	SO

**OFFSET BLOCK CHART FOR WW #1 APPROACH
POSTS P7 - P9**

POST NO.	OFFSET BLOCK	QTY	OFFSET BLOCK ~ POST MFG. DIMENSIONS					REV	
			A	B	C	D	E		F (O.C.)
P7	OB7	1	2"	1'-2 11/16"	1'-7 11/16"	0	2"	1'-7 5/8"	SO
P8	OB8	1	2"	1'-2 5/8"	1'-7 5/8"	0	2"	1'-7 5/8"	SO
P9	OB9	1	2"	1'-2 9/16"	1'-7 9/16"	0	2"	1'-7 9/16"	SO

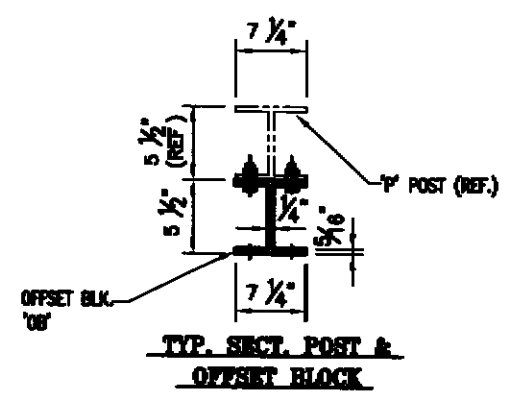
OFFSET BLOCK ~ RAIL MFG. DIMENSIONS

POST NO.	OFFSET BLOCK	G	H	J	K
P18	OB18	1 3/16"	1'-1 7/8"	1 1/8"	1'-1 7/8"
P19	OB19	1 3/16"	1'-1 13/16"	1 1/8"	1'-1 13/16"
P20	OB20	1 3/16"	1'-1 11/16"	1 1/8"	1'-1 11/16"

OFFSET BLOCK ~ RAIL MFG. DIMENSIONS

POST NO.	OFFSET BLOCK	G	H	J	K
P7	OB7	1 3/16"	1'-1 13/16"	1 1/8"	1'-1 13/16"
P8	OB8	1 3/16"	1'-1 3/4"	1 1/8"	1'-1 3/4"
P9	OB9	1 3/16"	1'-1 11/16"	1 1/8"	1'-1 11/16"

NOTE:
FOR POST TOPS THAT HAVE MITERS
LESS THAN OR EQUAL TO 1/8"
- THE POSTS WILL BE TREATED
SQUARE.



NOTE:
4 CLAMPING BARS CB-03-A
(1/4" DIA) FOR POSTS P8 - P13 - P15
1/2" - 13 UNC
S.S. BOLT x 1" LG. "F81"
1 1/16" O.D. x 17/32"
L.D. x 3/32" THK. ALUM
WASHER "F81"
(#18280 & #18404)
(6 PER POST)

ANODIZED
(SEE NOTES ON LBS)

PROJECT No: BHF 023-(5) ITEM No: 900 640

APPROVED: *LBG* DRP

DATE: 2/2/10

FOR: F. R. LAFAYETTE INCORPORATED
VERMONT AGENCY OF TRANSPORTATION
TOWN OF FAREHAM, COUNTY OF FRANKLIN
BRIDGE BUILDING FOR BRIDGE #10, VT. RTE. 104, MAJOR ARTERIAL
OFFSET BLOCK DETAILS

WORK: CMS DATE: 11/08/09 JOB No: AR0600 COST No:
CHECK: DL DATE: 12/28/09 DRAWING: LB14 REV No: