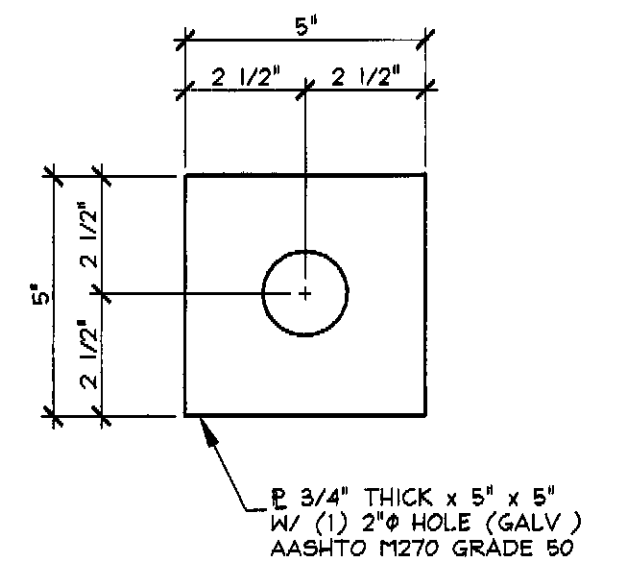


**BENT BARS, TIES, & STIRRUPS**

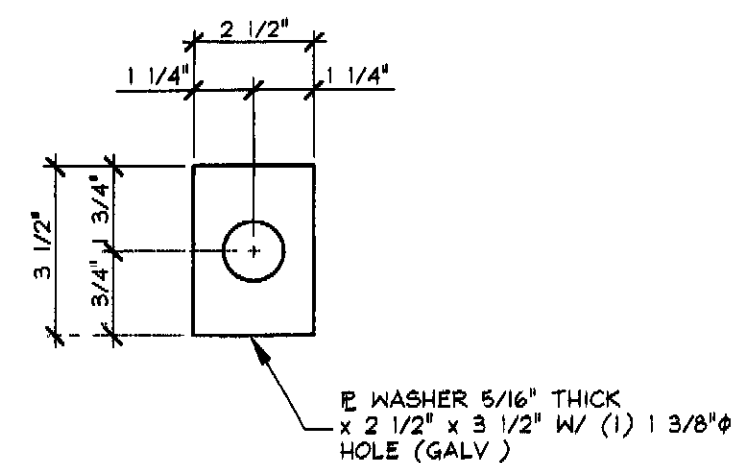
ITEM	MARK	QTY	SIZE	LENGTH	TYPE	A	B	C	D	E	F/R	G	H	J	K	O	GRADE	REMARKS
1	FS401E	720	#4	5'-10 3/4"	S10		1'-2 1/2"	3'-7 3/4"	1'-2 1/2"								60	EPOXY COATED
2	FS403E	64	#4	3'-11 1/4"	S10		1'-6"	1'-1 1/4"	1'-6"								60	EPOXY COATED
3	FS405E	32	#4	4'-0 1/4"	S10		1'-6"	1'-2 1/4"	1'-6"								60	EPOXY COATED
4	FS407E	32	#4	4'-0 1/2"	S10		1'-6"	1'-2 1/2"	1'-6"								60	EPOXY COATED
5	FS408E	16	#4	4'-1 1/2"	S10		1'-6"	1'-3 1/2"	1'-6"								60	EPOXY COATED
6																		
7																		
8																		
9	FS501E	64	#5	7'-3 1/2"	S10		1'-11"	3'-7 3/4"	1'-11"								60	EPOXY COATED
10	FS502E	64	#5	4'-8 1/4"	T15		1'-11"	10 1/4"	9 3/4"	6"	10 1/4"		3"		5"		60	EPOXY COATED
11																		
12																		
13																		
14		54	#4	3'-8"	STR												60	EPOXY COATED
15																		
16																		
17																		
18																		
19																		
20																		
21																		
22																		
23																		
24																		
25																		
26																		
27																		
28																		
29																		
30																		

**MISCELLANEOUS MATERIALS**

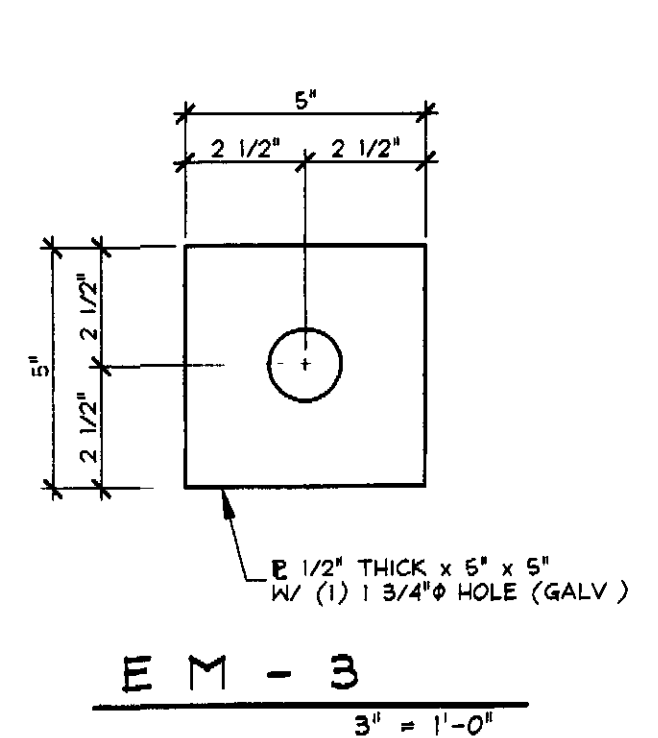
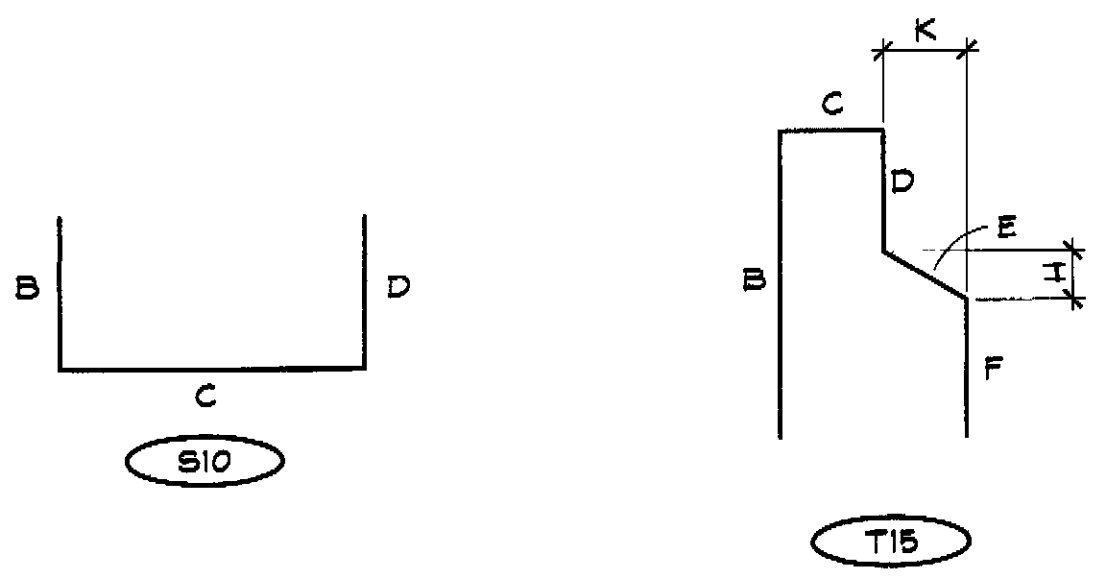
ITEM	MARK	QTY	DESCRIPTION	REMARKS
1	EM-1	6	E 3/4" x 5" x 5" W/ (1) 2" HOLE (GALV)	FOR ERECTION, SEE DETAIL THIS SHEET
2	EM-3	18	E 1/2" x 5" x 5" W/ (1) 1 3/4" HOLE (GALV)	FOR ERECTION, SEE DETAIL THIS SHEET
3		18	1 1/2" x 3'-10 1/2" ANCHOR BOLT (GALV) W/ HEAVY NUT (GALV)	FOR ERECTION, SEE DETAIL THIS SHEET
4		6	SINGLE USE STRESSING CHUCK	FOR ERECTION
5		3	1/2" x 38'-9" POLYSTRAND	FOR ERECTION
6	EM-2	36	2" THICK x 6" x 8" ELASTOMERIC BRG PAD (60D)	FOR ERECTION, SEE DETAIL THIS SHEET
7		48	E 5/16" x 2 1/2" x 3 1/2" W/ (1) 1 3/8" HOLE (GALV)	FOR ERECTION, SEE DETAIL THIS SHEET
8		48	1 1/4" x 12" MACHINE BOLT W/ 3" THRD (GALV)	24 FOR C I P SIDEWALK
9		48	1 1/4" x 5" SLEEVE NUT W/ RIGHT HAND THRD (GALV)	24 FOR C I P SIDEWALK
10		16	DAYTON C-24 TYPE 4-APR PRESS STEEL P/C HALF HANGER (GALV)	
11				
12		56	3/4" x 4" NON-FERROUS VD DRAINS	
13		8	3/4" x 5" NON-FERROUS VD DRAINS	
14		24	3/4" x 4 1/2" NON-FERROUS VD DRAINS	
15		12	3/4" x 5 1/2" NON-FERROUS VD DRAINS	
16				
17		16	WIRE MESH WWF-W4 x W4 -W2 9 x W2 9 (1'-3" x 3'-8") (E C)	
18		8	WIRE MESH WWF-W4 x W4 -W2 9 x W2 9 (1'-4" x 3'-8") (E C)	
19		8	WIRE MESH WWF-W4 x W4 -W2 9 x W2 9 (1'-5" x 3'-8") (E C)	
20		4	WIRE MESH WWF-W4 x W4 -W2 9 x W2 9 (1'-6" x 3'-8") (E C)	
21				
22				
23				
24		36	DOUBLE 1/2" STRAND LIFTING LOOPS	
25				
26				
27				
28				
29				
30				



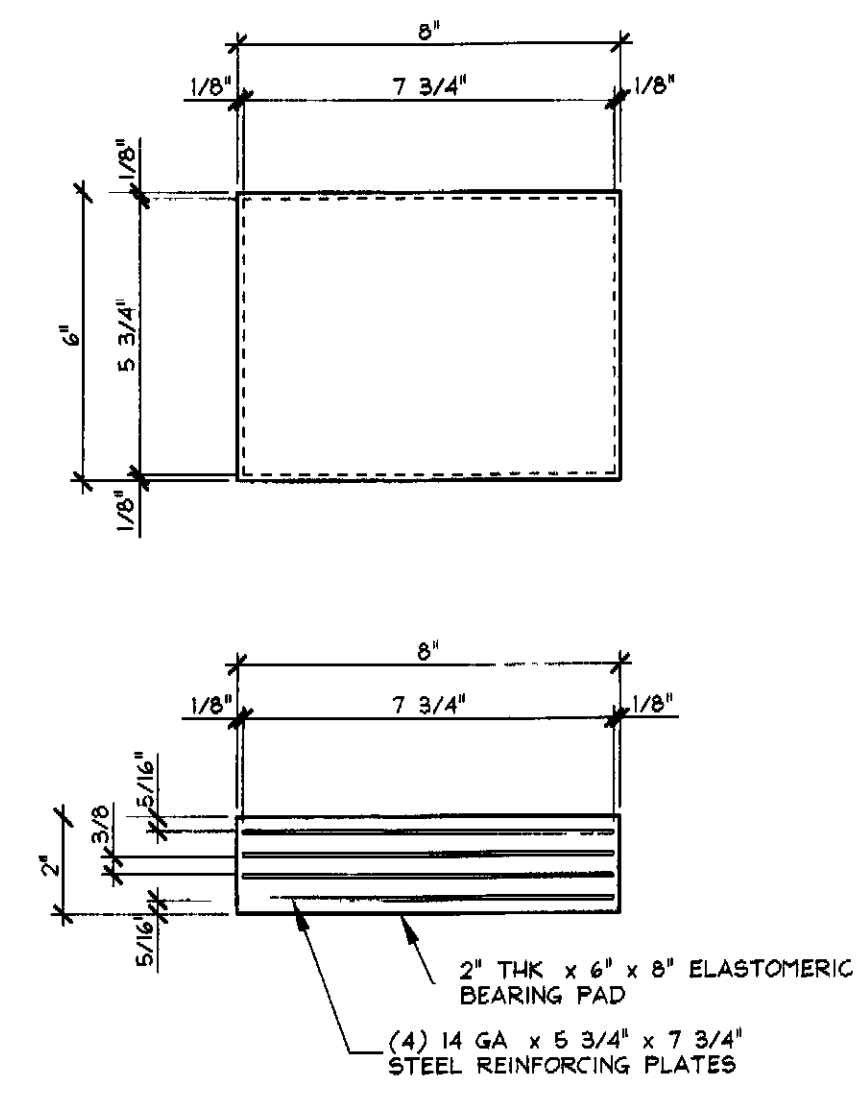
**EM - 1**  
3" = 1'-0"



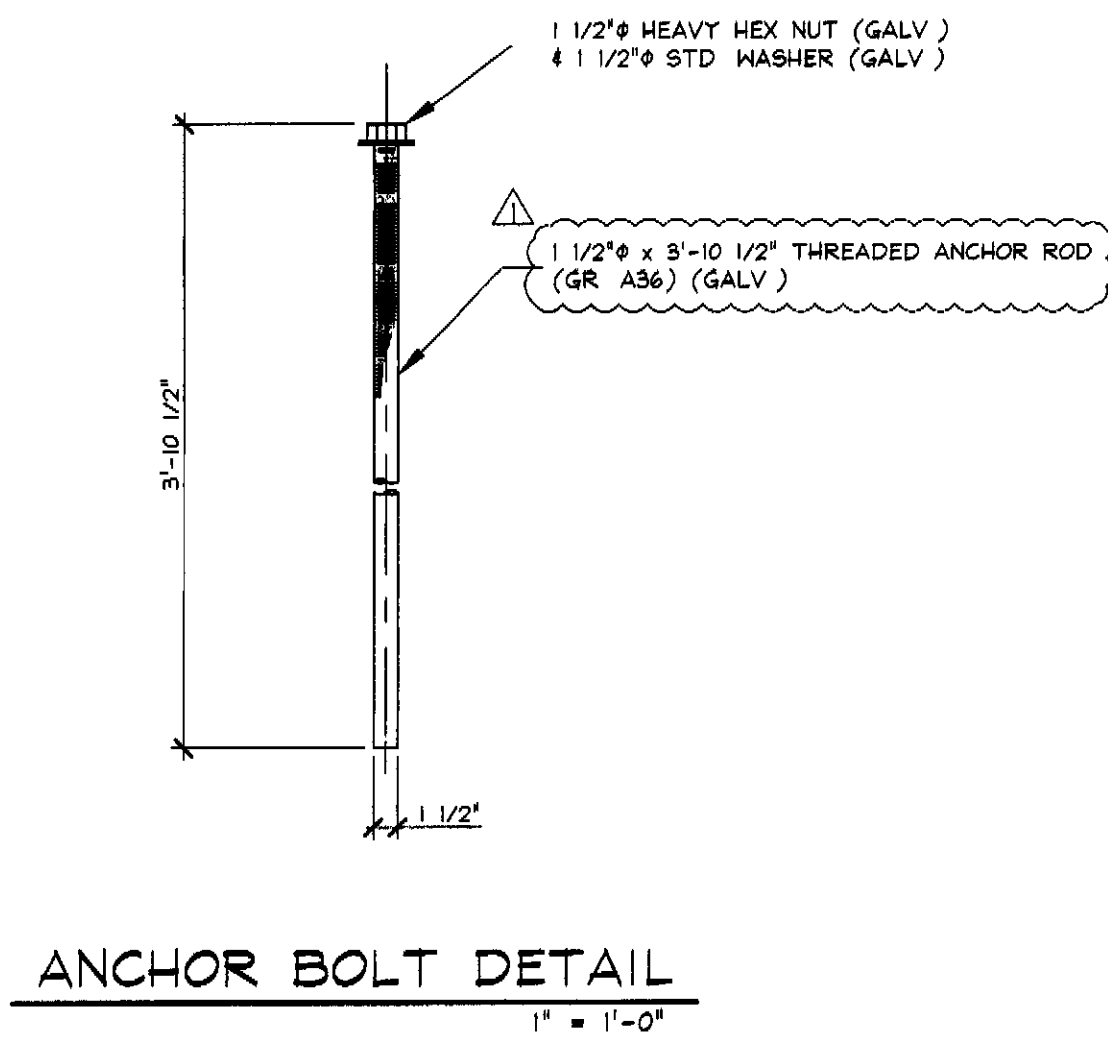
**E WASHER**  
3" = 1'-0"



**EM - 3**  
3" = 1'-0"



**EM-2 - BEARING PAD DETAIL**  
3" = 1'-0"



**ANCHOR BOLT DETAIL**  
1" = 1'-0"

1-18-10 REVISED AS PER ENGINEER COMMENTS 12/29/2009 T D

APPROVAL STAMP  STATE OF VERMONT AGENCY OF TRANSPORTATION RECEIVED 01/27/2010 CHECKED BY WDL APPROVED BY CWC DATE 01/27/2010	J.P. CARRARA & SONS INC. Precast & Prestress Manufacturer 2464 GISE STR. MIDDLEBURY, VERMONT 05753 Phone (802)388-6361 Fax (802)388-0010	BLOW & COTE, INC. CONTRACTOR MORRISVILLE, VERMONT
	STATE OF VERMONT A.O.T. COUNTY OF FRANKLIN	DATE NOV 12, 2009 SCALE NOTED
	TOWN OF FAIRFAX VERMONT ROUTE 104 BRIDGE NO 10 PROJECT NO BHF 023-1(5)	CHKD DFTM T D JOB NO 23304-09
	MATERIALS LIST	DWG NO M1