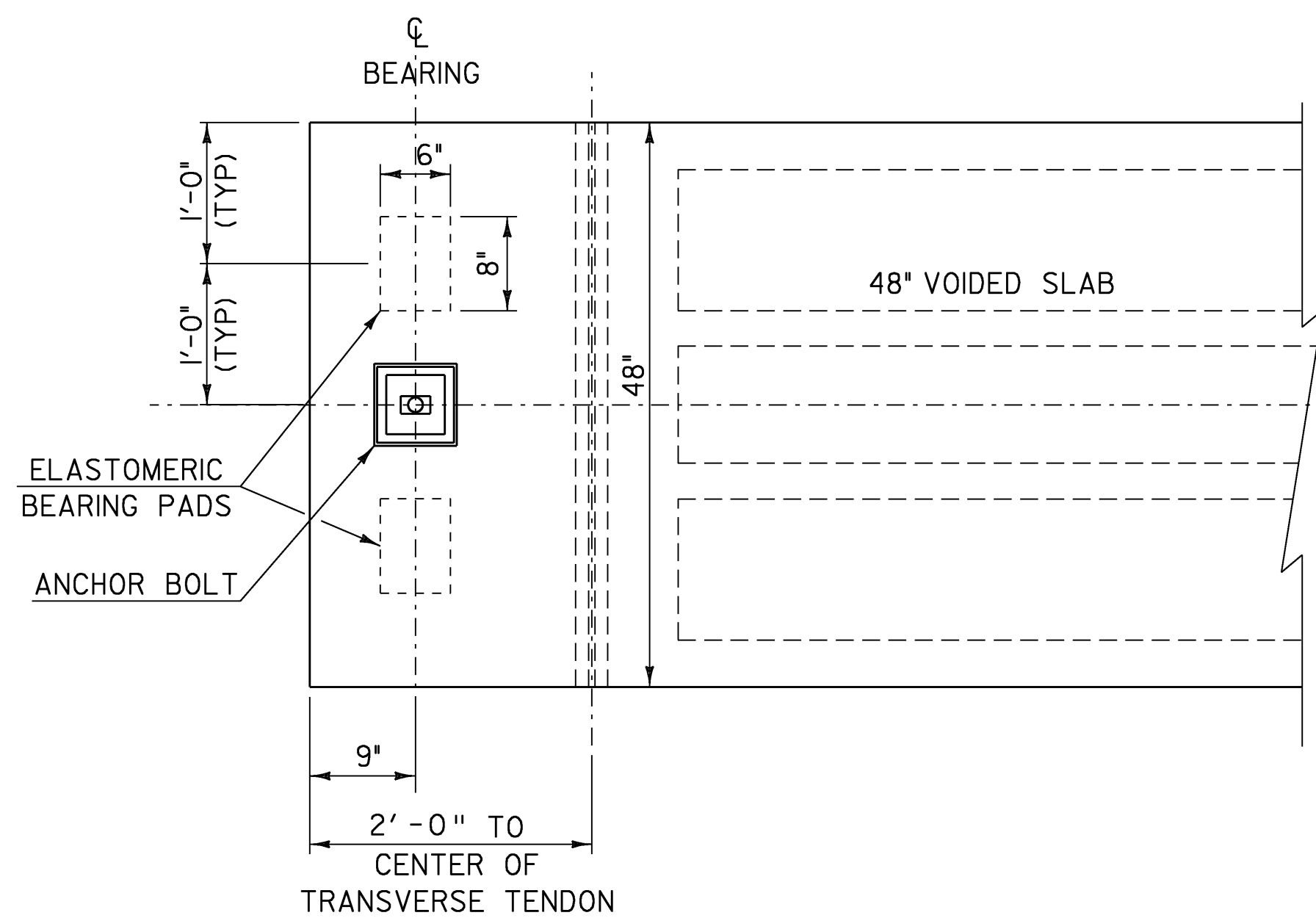


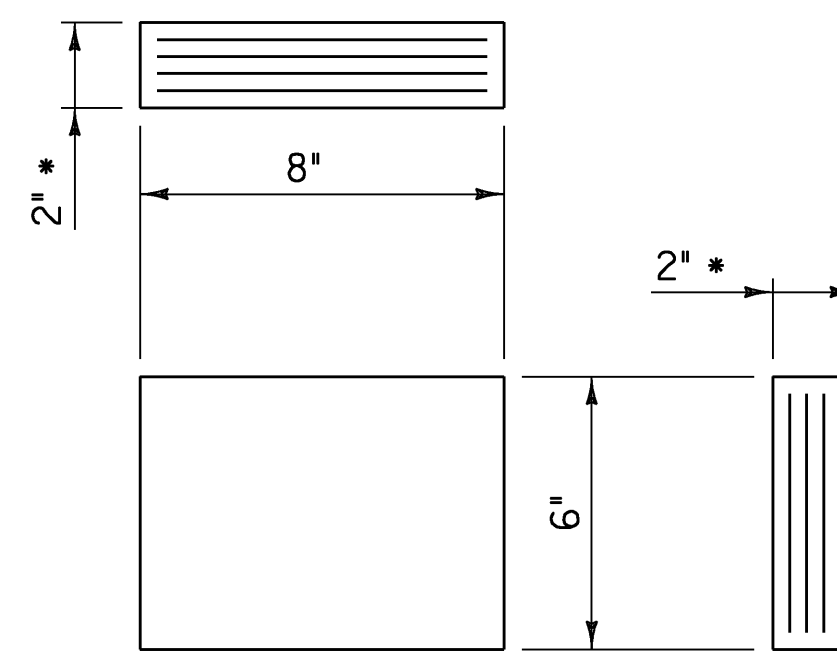
**BRIDGE END DETAIL @ ABUTMENTS  
(NORMAL TO C BEARING)**

SCALE 1" = 1'-0"  
1 9 6 3 0 1 2



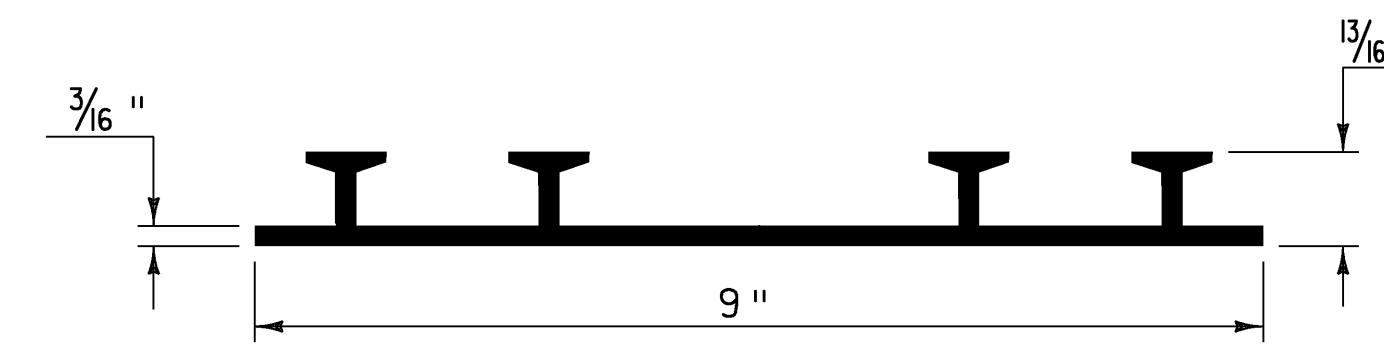
**BEARING PAD PLACEMENT DETAIL  
(TYPICAL EACH END)**

SCALE 1" = 1'-0"  
1 9 6 3 0 1 2



**ELASTOMERIC BEARING DETAIL**

\* 3 - 3/8" LAYERS OF ELASTOMERIC ALTERNATING WITH  
4 - 14 GAGE STEEL REINFORCING PLATES



**P.V.C. WATERSTOP FOR CONSTRUCTION JOINTS**

NTS

INCLUDE THE COSTS FOR P.V.C. WATERSTOP IN THE UNIT PRICE BID FOR CONCRETE, HIGH PERFORMANCE CLASS B. OTHER CONFIGURATIONS MAY BE USED UPON APPROVAL OF THE STRUCTURES ENGINEER.

**NOTES**

- ITEM 531.11, "BEARING DEVICE ASSEMBLY, ELASTOMERIC PAD" IS THE PAY ITEM FOR THE BEARINGS.
- ALTERNATE CONFIGURATIONS FOR ELASTOMERIC BEARINGS MAY BE SUBMITTED FOR APPROVAL. ANY ALTERNATE BEARING SUBMITTED SHALL BE DESIGNED AND CERTIFIED TO MEET THE LOADS AND CRITERIA SHOWN ON THIS SHEET AND MAINTAIN THE ANCHORAGE SYSTEM SHOWN. THE BEARINGS SHALL BE DESIGNED ACCORDING TO AASHTO "LRFD BRIDGE DESIGN SPECIFICATIONS" 2006 EDITION AND ITS LATEST REVISIONS.
- THE BEARING SHAPE FACTOR SHALL BE BETWEEN 5.0 AND 12.0.
- ALL REINFORCEMENT BETWEEN LAYERS OF ELASTOMERIC SHALL BE STEEL GRADE 60. NO FABRIC REINFORCEMENT WILL BE PERMITTED.
- ELASTOMERIC BEARINGS REINFORCED WITH STEEL SHALL HAVE A 1/8" EDGE SEAL OF ELASTOMERIC INTEGRAL WITH THE BEARING OVER ALL PLATES.
- DESIGN CRITERIA:
  - A. TEMPERATURE RANGE: 80 F
  - B. 60 DUROMETER ELASTOMERIC
  - C. MAXIMUM BEARING STRESS: 1000 psi
  - D. DESIGN ROTATION: 0.016 rad
  - E. REACTION/BEAM:
 

	48"
RDL:	35 kips
RLL+I:	33 kips
- COMPRESSIBLE SEALER. THE FABRICATOR SHALL SUPPLY A SELF ADHESIVE COMPRESSIBLE SEALER BETWEEN THE BOTTOM OF THE UNITS AND THE BRIDGE SEAT. THIS COMPRESSIBLE SEALER SHALL SURROUND THE 2 1/2" DIA SLEEVE IN THE UNIT. THE PURPOSE OF THE SEALER IS TO FACILITATE PLACEMENT OF THE "MORTAR OR JOINT SEALER" AROUND THE ANCHOR BOLTS, PAYMENT WILL BE INCLUDED IN THE UNIT PRICE BID FOR ITEM 535.11, "BEARING DEVICE ASSEMBLY, ELASTOMERIC PAD"

**BRIDGE END AND  
BEARING DETAILS**

PROJECT NAME: FAIRFAX	PLOT DATE: 13-JUL-2009
PROJECT NUMBER: BHF 023-I(5)	DRAWN BY: str3
FILE NAME: 86e064\str\se064sup.dgn	CHECKED BY: C. CARLSON
DESIGNED BY: C. CARLSON	SHEET 40 OF 61
se064beb.1	