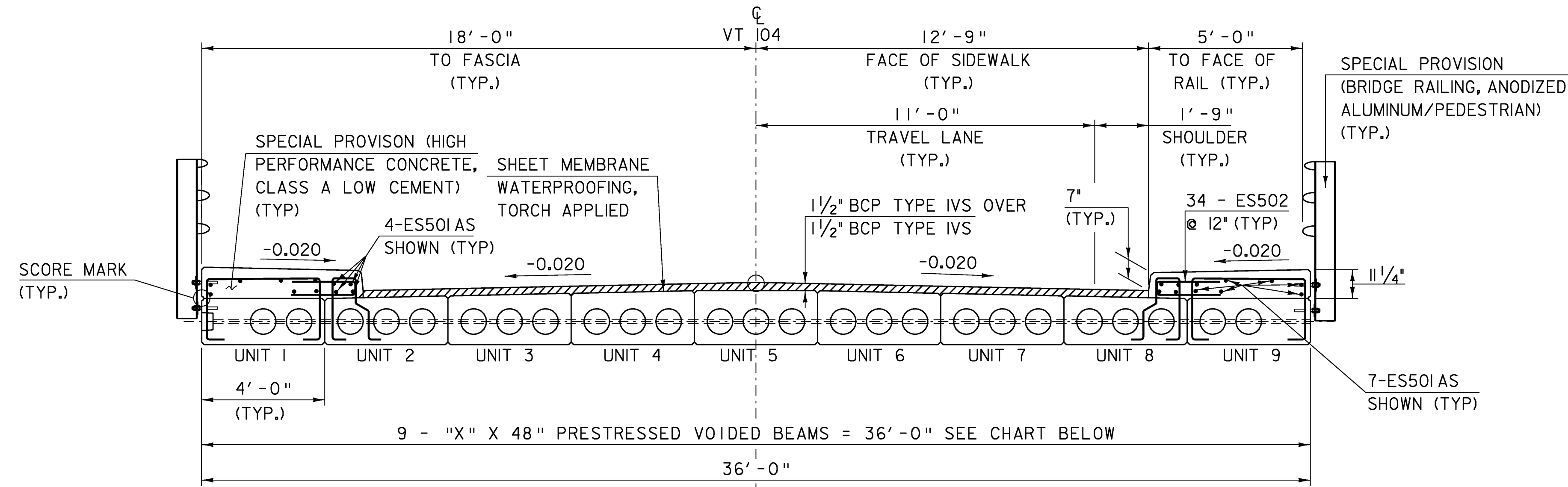


**SIDEWALK NOTES:**

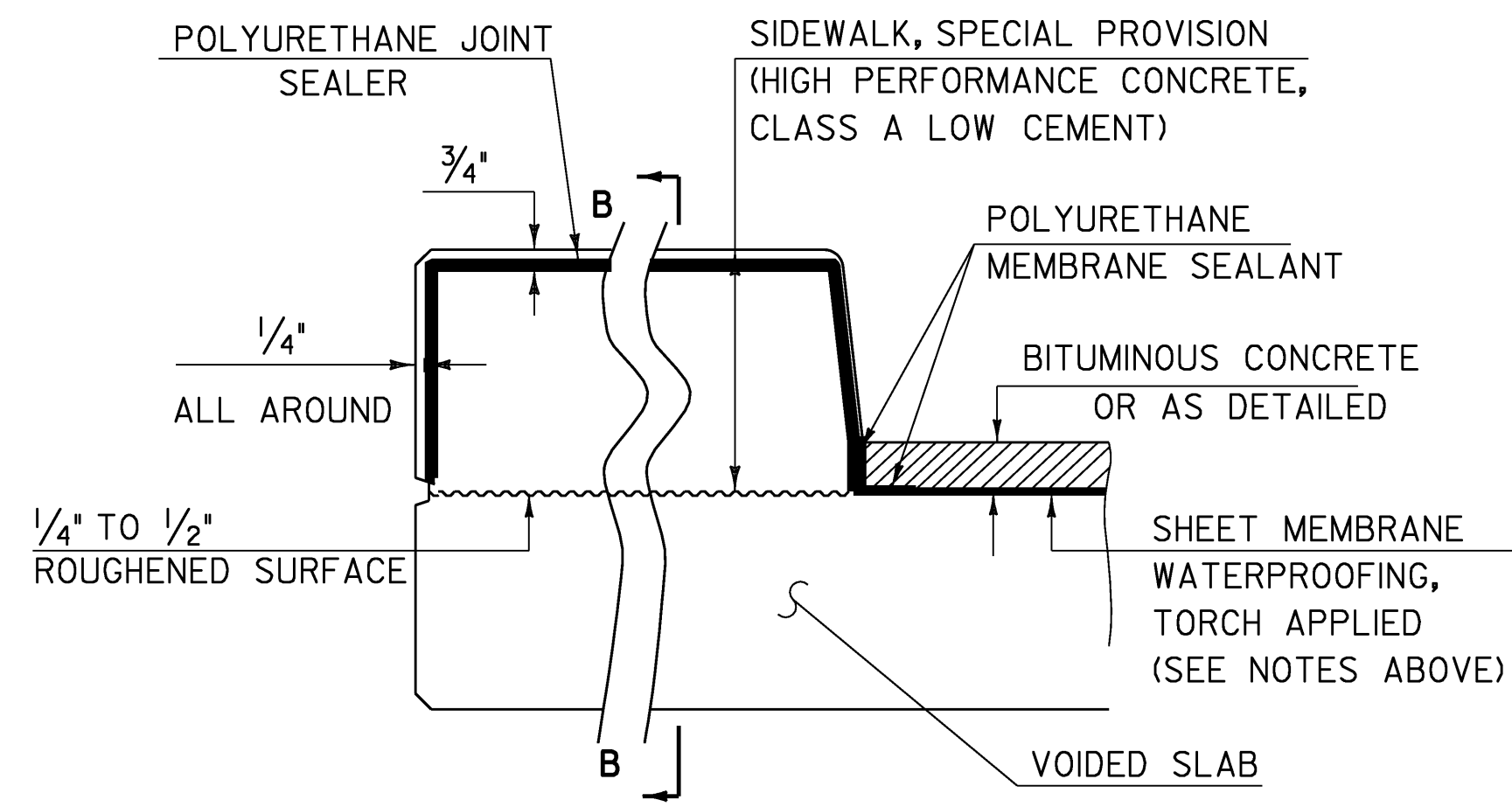
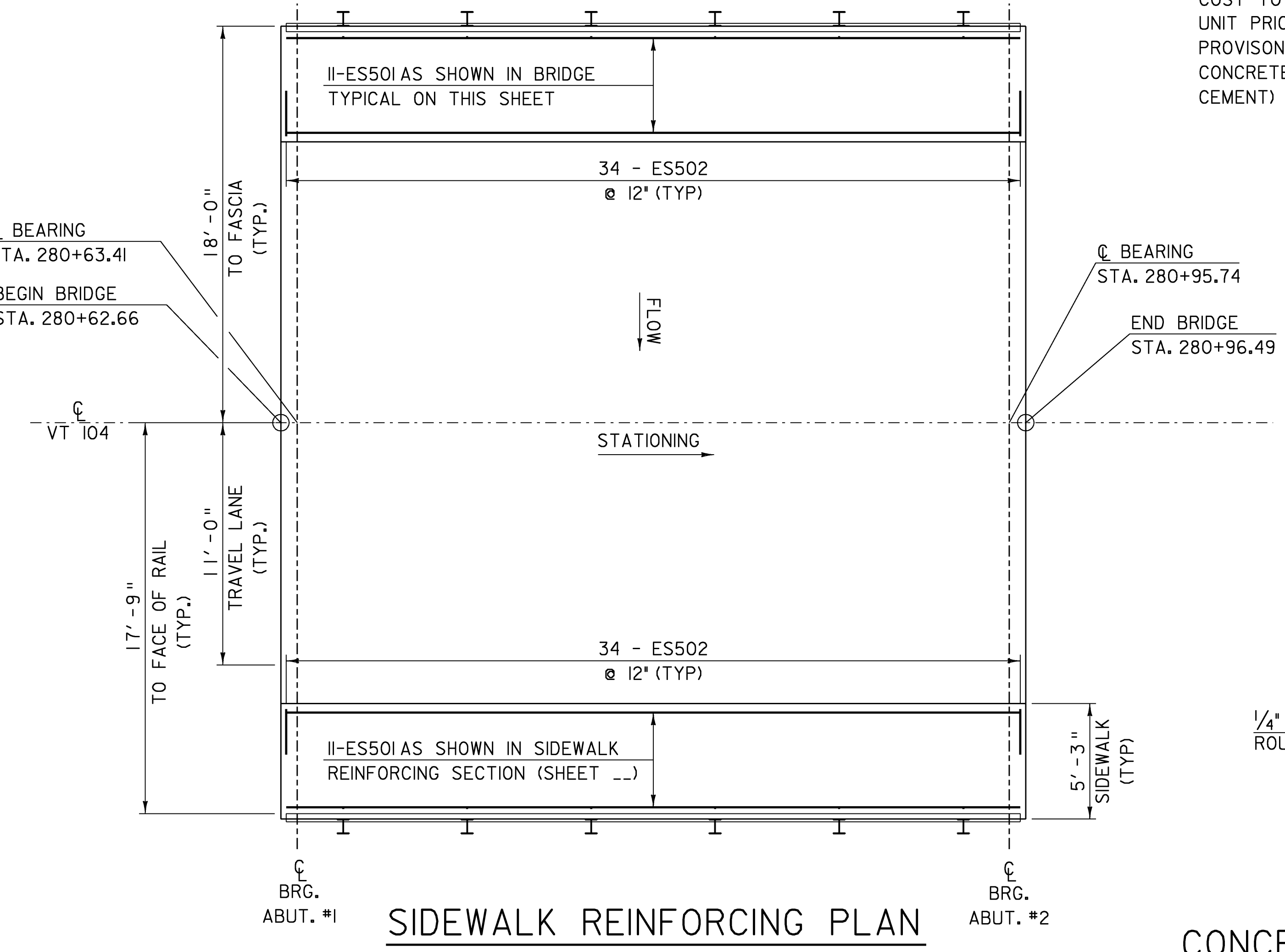
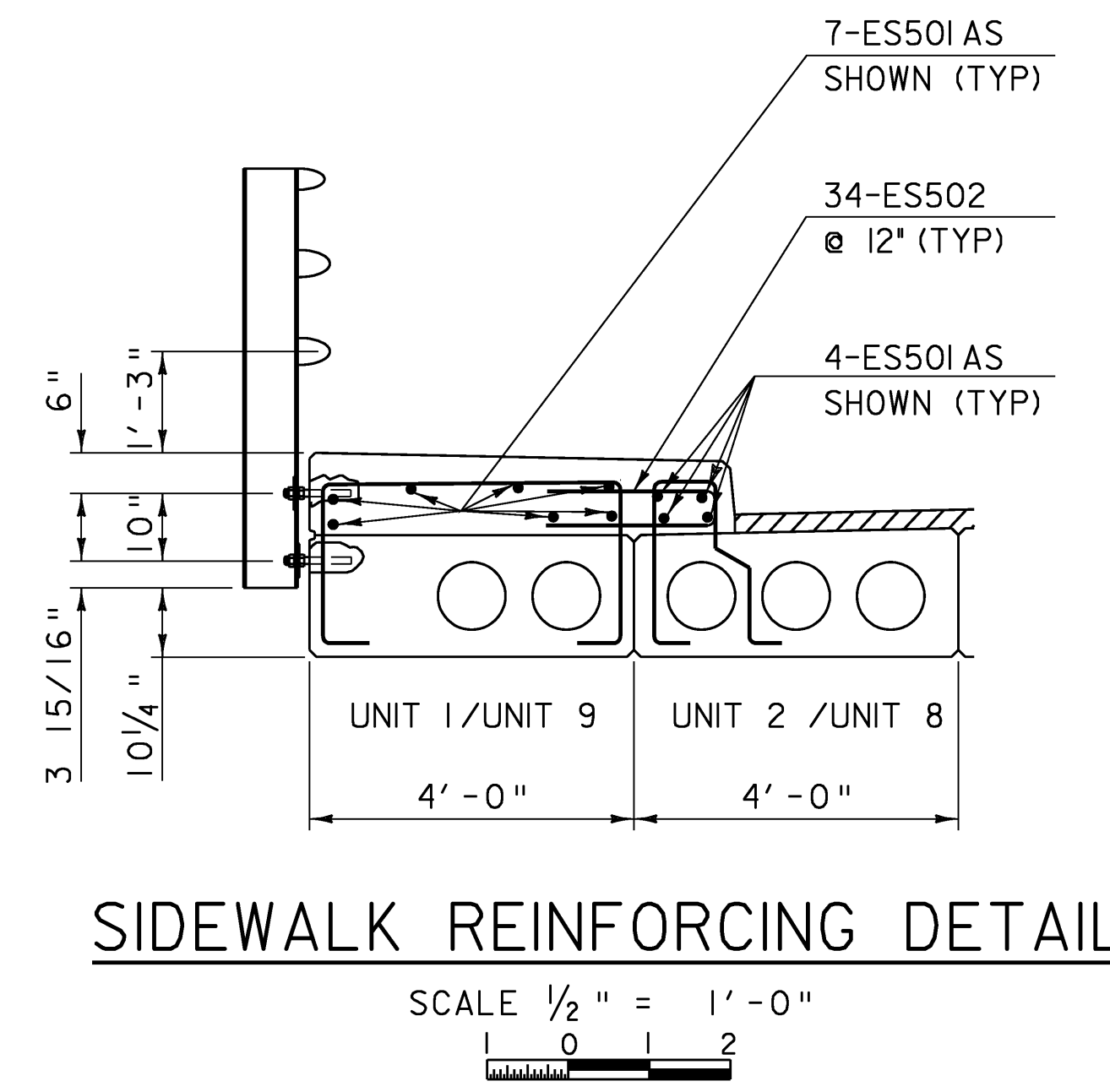
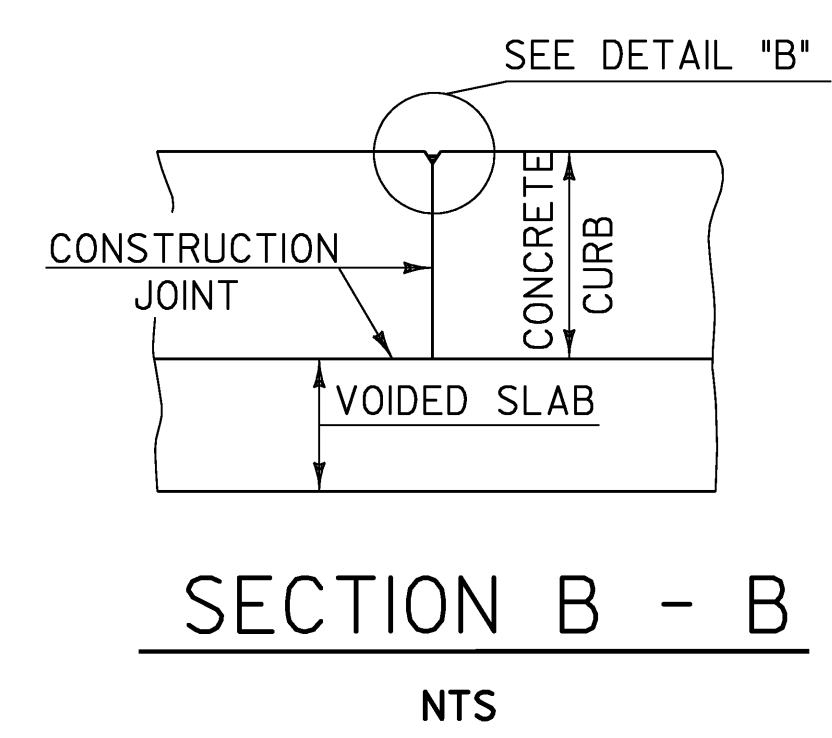
1. THE SIDEWALKS SHALL BE CONSTRUCTED WITH CONSTRUCTION JOINTS SPACED AT A MAXIMUM OF 15'-0" CENTER TO CENTER AND 2'-0" MINIMUM FROM THE CENTER OF THE NEAREST BRIDGE RAILING POST. CONCRETE SIDEWALKS MAY BE PLACED IN ONE CONTINUOUS OPERATION, IF APPROVED BY THE STRUCTURES ENGINEER.
2. WHEN CURB JOINTS ARE USED THE SIDEWALKS SHALL BE PLACED IN ALTERNATE SECTIONS WITH A MINIMUM OF 48 HOUR DELAY BETWEEN ADJACENT PLACEMENTS.
3. LONGITUDINAL REINFORCING SHALL BE CONTINUOUS THROUGH SIDEWALK CONSTRUCTION JOINTS.



NOTE: 3" (MIN.) CLEAR COVER FOR REINFORCING STEEL IN SIDEWALKS

POLYURETHANE JOINT SEALER PER SUBSECTION 524.06C COLOR TO MATCH CONCRETE. COST TO BE INCLUDED IN THE UNIT PRICE BID FOR SPECIAL PROVISION (HIGH PERFORMANCE CONCRETE, CLASS A LOW CEMENT)

**DETAIL "B"**  
NTS



VOIDED SLAB NO.	QUANTITY	("X") DEPTH
UNIT 1	2	18"
UNIT 2	2	18"-19"
UNIT 3	2	19"-20"
UNIT 4	2	20"-21"
UNIT 5	1	21"

**BRIDGE TYPICAL & SIDEWALK REINFORCING**

PROJECT NAME: FAIRFAX  
 PROJECT NUMBER: BHF 023-I(5)  
 FILE NAME: 86e064\str\se064sup.dgn  
 PROJECT LEADER: C. CARLSON  
 DESIGNED BY: C. CARLSON  
 PLOT DATE: 13-JUL-2009  
 DRAWN BY: C. MOONEY  
 CHECKED BY: C. CARLSON  
 SHEET 35 OF 61