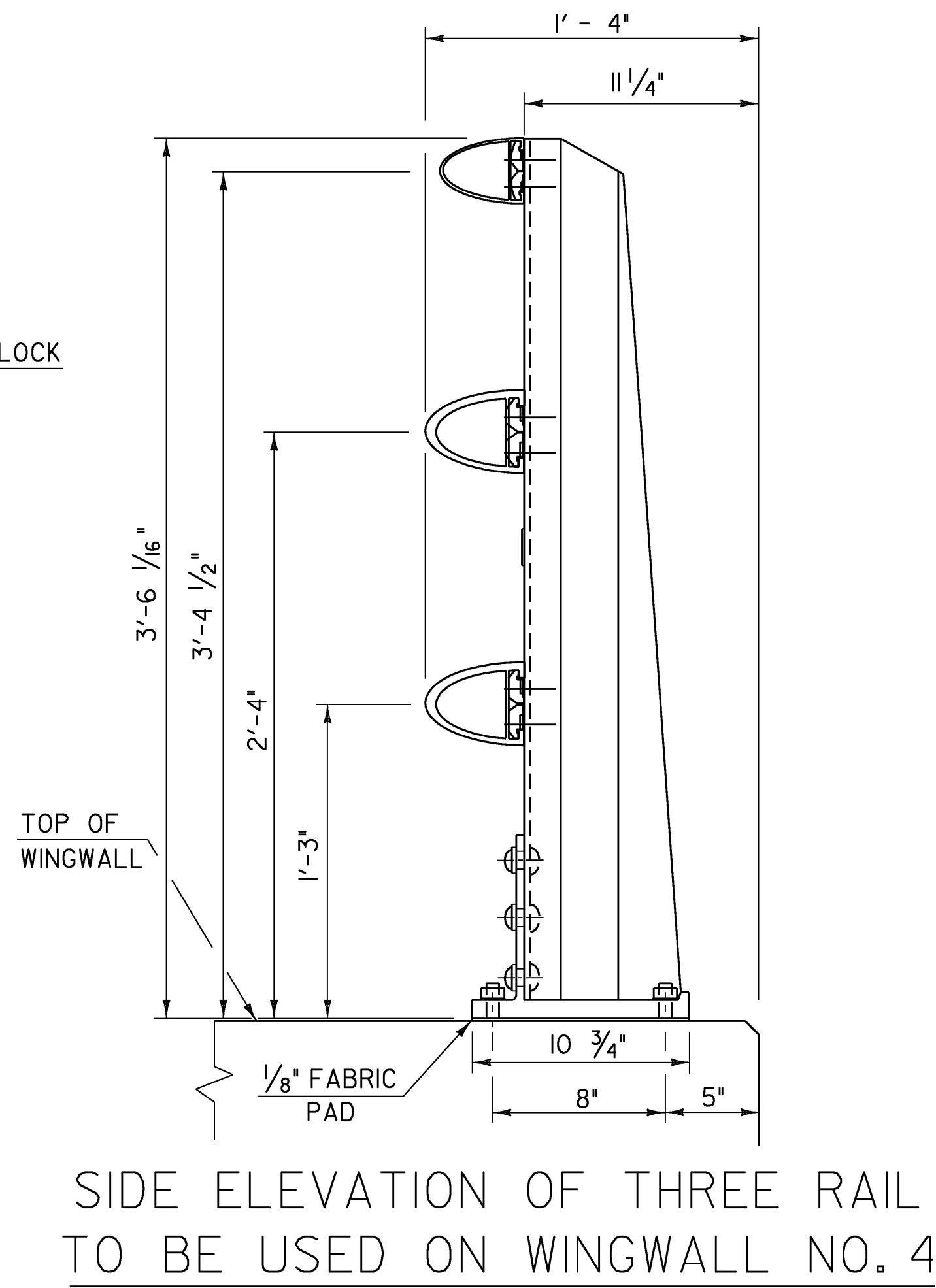


FRONT ELEVATION

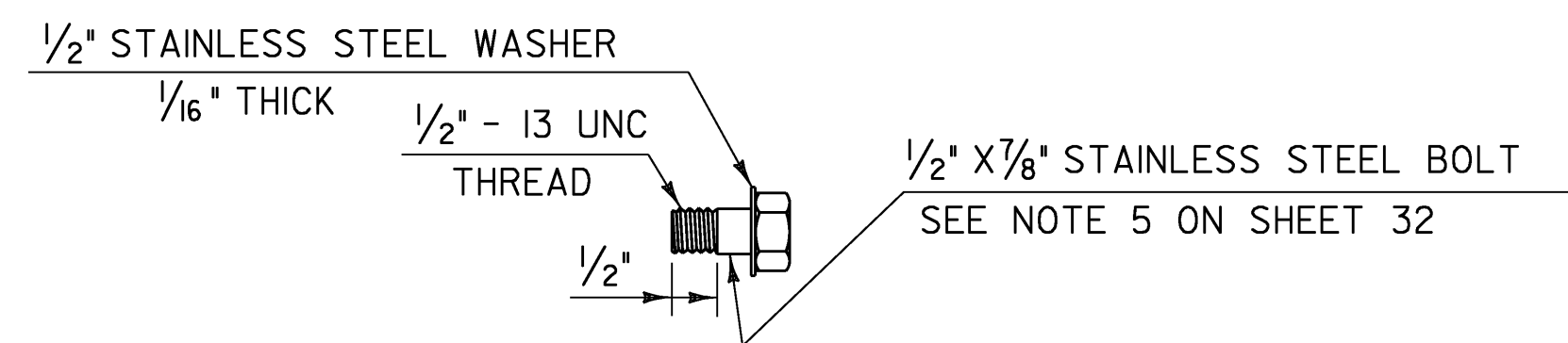
SIDE ELEVATION

APPROACH RAIL DETAILS

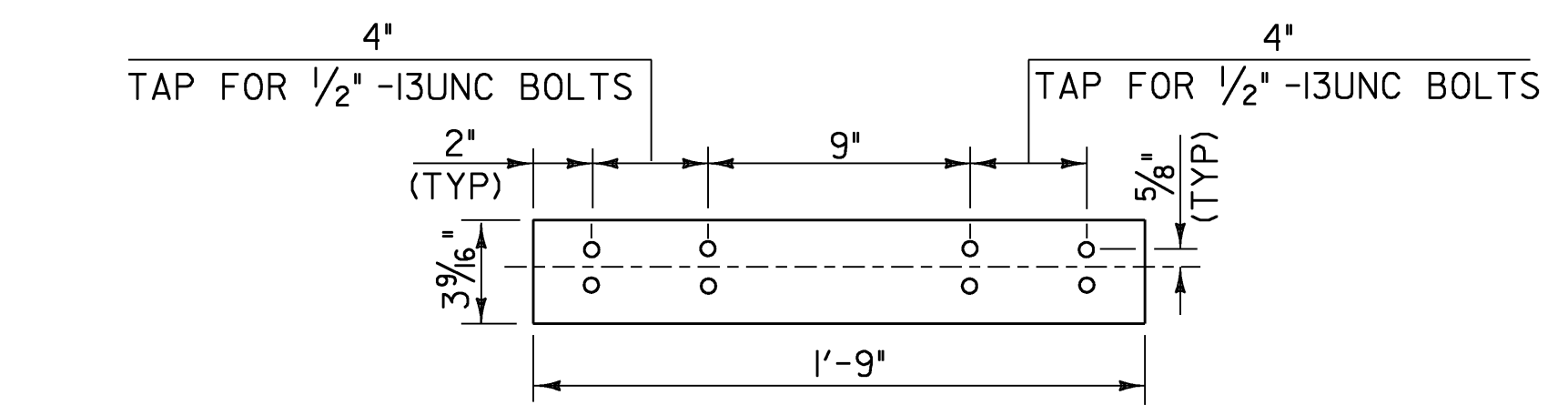
| | WW1 | WW2 | RETAINING WALL |
|-----|------------|------------|----------------|
| "X" | $1 1/16$ " | $1 1/16$ " | $3/4$ " |
| "Y" | $1/8$ " | $1/8$ " | $1/4$ " |
| "Z" | $1/8$ " | $1/8$ " | $3/16$ " |



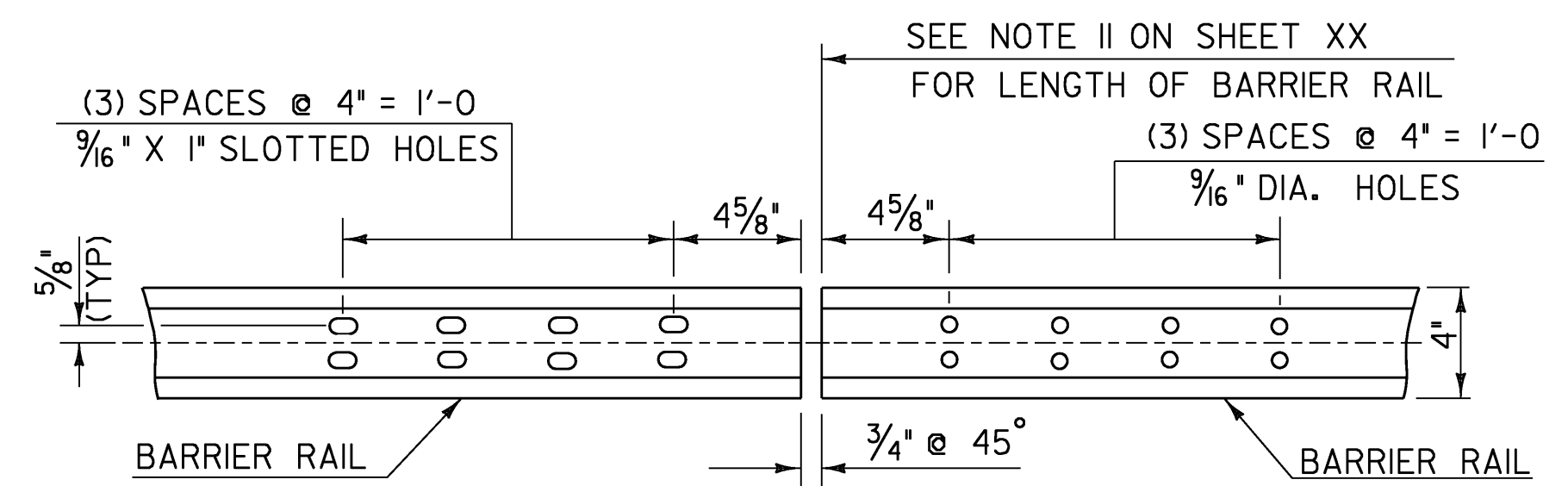
SIDE ELEVATION OF THREE RAIL
 TO BE USED ON WINGWALL NO. 4



STAINLESS STEEL BOLT DETAILS



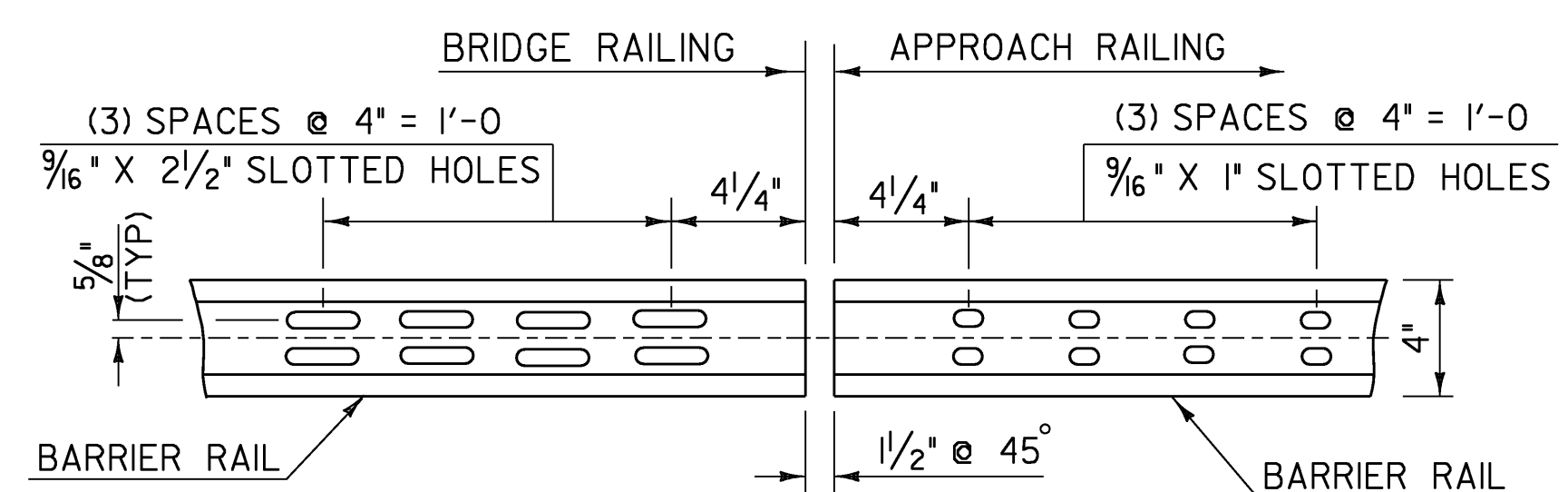
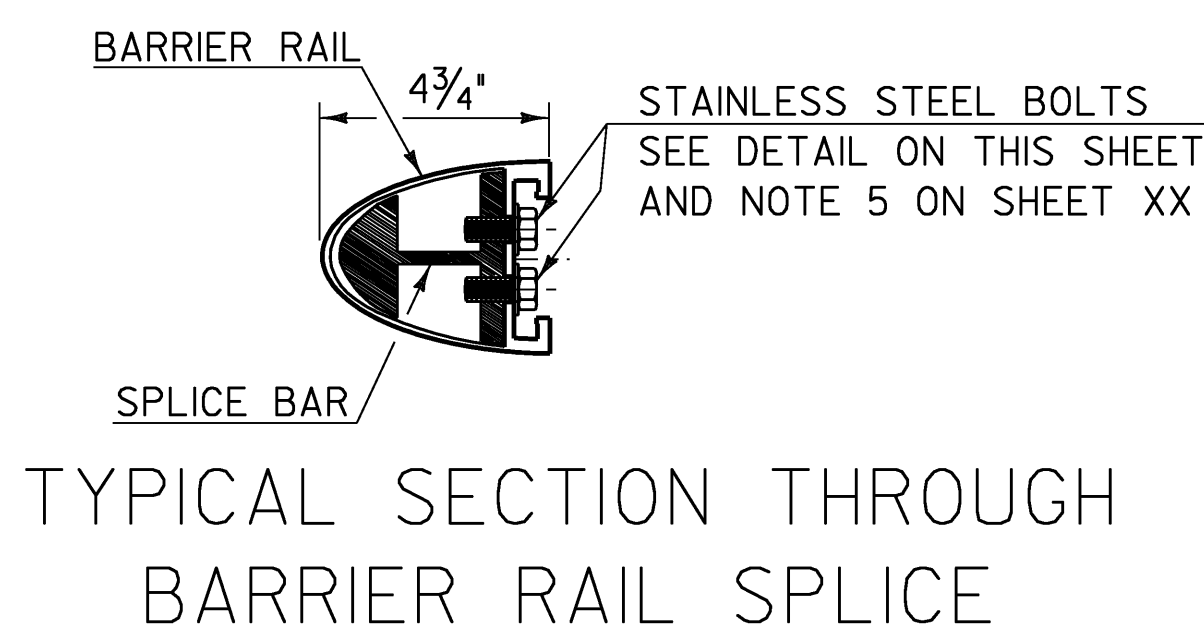
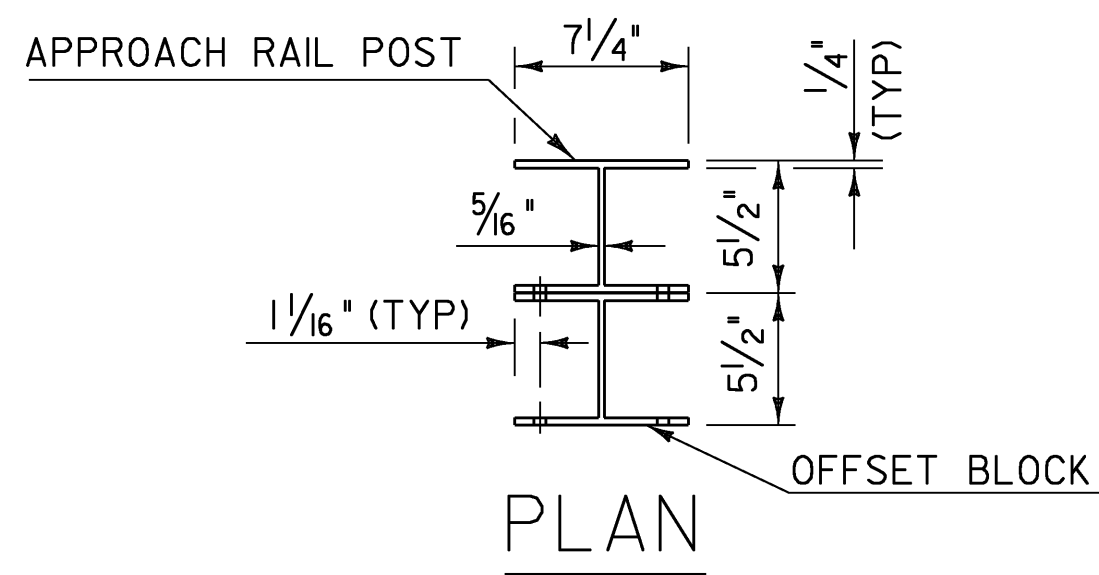
ELEVATION OF BARRIER RAIL SPLICE BAR
 TO BE USED AT TRANSITION BETWEEN
 APPROACH RAIL & GUARD RAIL (FROM BACK)



ELEVATION OF BARRIER RAIL (FROM BACK)
 AT ALL INTERMEDIATE RAIL SPLICES

APPROACH RAILING NOTES

1. ALL APPROACH RAILING POSTS SHALL BE EXTRUDED ALUMINUM.
2. ANY STRUCTURAL STEEL SHALL BE GRADE 36 GALVANIZED AFTER FABRICATION.
3. ALL ITEMS NOT OTHERWISE INDICATED SHALL MEET THE SPECIFICATION REQUIREMENTS OF THE STANDARD SHEETS ON WHICH THEY ARE DETAILED.
4. DETAILS ARE SHOWN FOR TRANSITION TO A 3 RAIL ALUMINUM BRIDGE RAILING.
5. DIMENSIONS SHOWN ARE FROM A REFERENCE LINE AT THE FACE OF POST FOR A NORMAL CROWNED SECTION. APPROPRIATE CORRECTIONS SHALL BE MADE FOR CROSS SLOPES OTHER THAN A NORMAL SECTION.
6. THE APPROACH RAILING SYSTEM AND RELATED HARDWARE SHALL BE ANODIZED TO A BLACK SATIN FINISH. (SEE SPECIAL PROVISIONS.)



ELEVATION OF BARRIER RAIL (FROM BACK)

ALUMINUM RAILING DETAILS
 (SHEET 6)

| | |
|--------------------------------------|------------------------|
| PROJECT NAME: FAIRFAX | PLOT DATE: 13-JUL-2009 |
| PROJECT NUMBER: BHF 023-I(5) | DRAWN BY: str3 |
| FILE NAME: /86e064/str/se064rail.dgn | CHECKED BY: C. CARLSON |
| PROJECT LEADER: C. CARLSON | SHEET 33 OF 61 |
| DESIGNED BY: C. CARLSON | |
| se064rail6.1 | |