

PORTLAND CEMENT CONCRETE SIDEWALK, 5 INCH

STA. 279+27.6 LT. - 280+62.7 LT.
STA. 279+33.5 RT. - 279+43.5 RT.
STA. 279+74.7 RT. - 280+62.7 RT.
STA. 280+96.5 LT. - 281+49.8 LT.
STA. 280+96.5 RT. - 281+29.5 RT.

SPECIAL PROVISION (BRIDGE RAILING ANODIZED ALUMINUM/PEDESTRIAN)

STA. 280+62.7 LT. - 281+31.2 LT.
STA. 280+62.7 RT. - 280+96.3 RT.

SPECIAL PROVISION (ALUMINUM APPROACH RAILING, ANODIZED)

STA. 280+41.7 LT. - 280+62.7 LT.
STA. 280+42.1 RT. - 280+62.7 RT.
STA. 281+31.2 LT. - 281+42.0 LT.

REMOVAL AND DISPOSAL OF GUARDRAIL

STA. 280+61.5 RT. - 280+61.8 RT.
STA. 280+95.9 LT. - 281+44.4 LT.

CAST-IN-PLACE CONCRETE CURB, TYPE B

STA. 279+44.4 LT. - 280+16.8 LT.
STA. 280+32.8 LT. - 280+62.7 LT.
STA. 279+74.7 RT. - 280+62.7 RT.
STA. 280+96.5 LT. - 281+49.8 LT.
STA. 280+96.5 RT. - 281+29.5 RT.
STA. 280+96.5 RT. - 281+29.5 RT.
(CURB FOR ISLAND)

RELOCATE MAILBOX, MULTIPLE SUPPORT

STA. 280+38.7 LT.

CONSTRUCT RETAINING WALL

STA. 280+96.5 LT. - 281+31.5 LT.

CONSTRUCT DRIVE

STA. 279+37.7 LT. (11' WIDE)
STA. 280+24.8 LT. (16' WIDE)
STA. 281+39.5 RT. (20' WIDE)
STA. 281+61.0 LT. (20' WIDE)

DETECTABLE WARNING SURFACE (YELLOW)

STA. 279+41 RT.
STA. 279+82 RT.

DRAINAGE

SEE DRAINAGE LAYOUT SHEET

REMOVING AND RESETTING FENCE

STA. 280+25.0 - STA. 280+63 RT

REMOVAL OF EXISTING FENCE

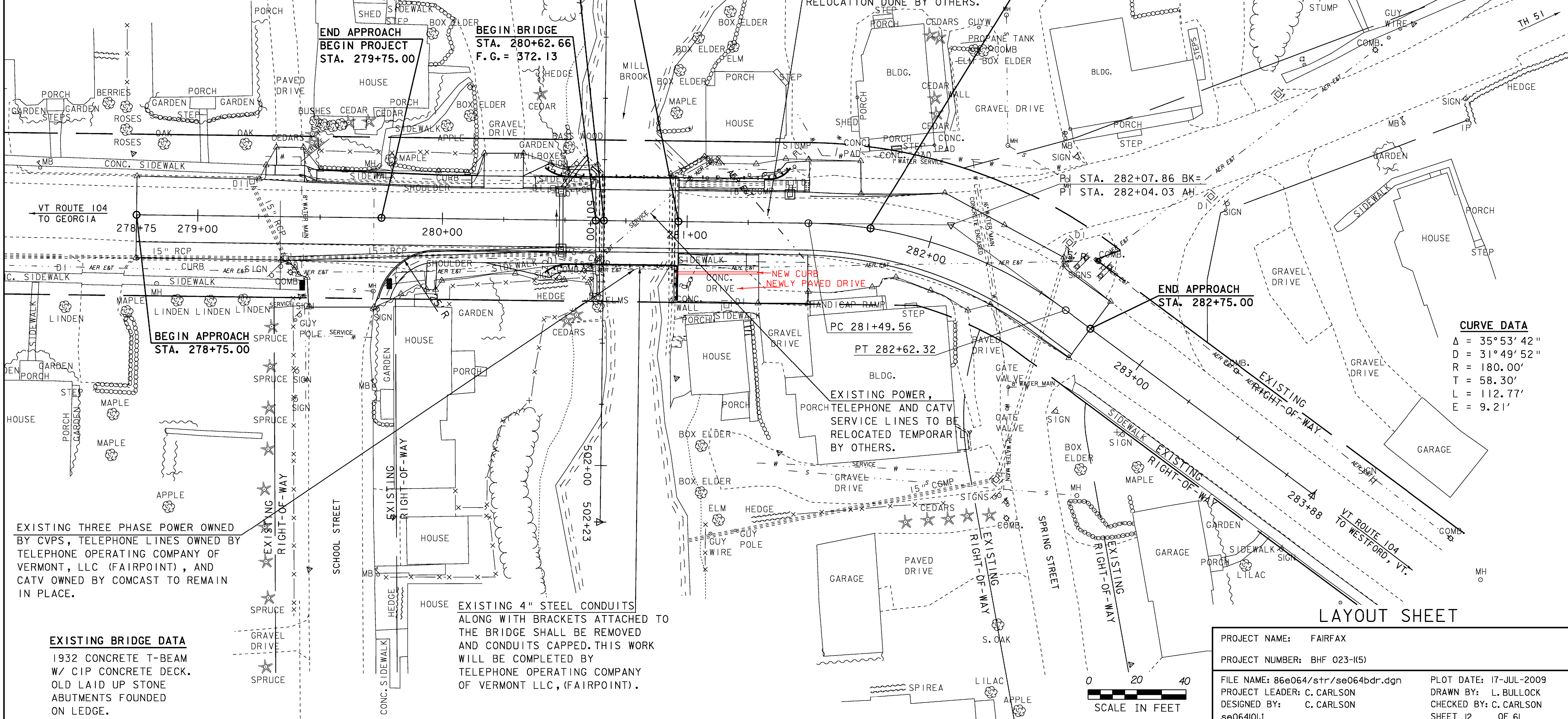
STA. 280+97 RT (15#)
STA. 281+00 LT - STA. 281+10 LT (#)

COLD PLANING, BITUMINOUS PAVEMENT

STA. 278+75.00 - 279+25.00
STA. 282+25.00 - 282+75.00

CHAIN LINK FENCE, 6FT 4 FT

STA. 281+00 FT - STA. 281+10 LT



**END APPROACH
BEGIN PROJECT
STA. 279+75.00**

**BEGIN BRIDGE
STA. 280+62.66
F.G. = 372.13**

**END BRIDGE
STA. 280+96.49
F.G. = 371.55**

**END PROJECT
BEGIN APPROACH
STA. 281+75.00**

**END APPROACH
STA. 282+75.00**

CURVE DATA

$\Delta = 35^\circ 53' 42''$
 $D = 31^\circ 49' 52''$
 $R = 180.00'$
 $T = 58.30'$
 $L = 112.77'$
 $E = 9.21'$

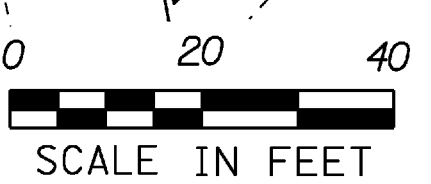
EXISTING THREE PHASE POWER OWNED BY CVPS, TELEPHONE LINES OWNED BY TELEPHONE OPERATING COMPANY OF VERMONT, LLC (FAIRPOINT), AND CATV OWNED BY COMCAST TO REMAIN IN PLACE.

EXISTING 4" STEEL CONDUITS ALONG WITH BRACKETS ATTACHED TO THE BRIDGE SHALL BE REMOVED AND CONDUITS CAPPED. THIS WORK WILL BE COMPLETED BY TELEPHONE OPERATING COMPANY OF VERMONT LLC, (FAIRPOINT).

EXISTING BRIDGE DATA

1932 CONCRETE T-BEAM W/ CIP CONCRETE DECK. OLD LAID UP STONE ABUTMENTS FOUNDED ON LEDGE.

PROJECT NAME: FAIRFAX	FILE NAME: 86e064/str/se064bdr.dgn	PLOT DATE: 17-JUL-2009
PROJECT NUMBER: BHF 023-1(5)	PROJECT LEADER: C. CARLSON	DRAWN BY: L. BULLOCK
	DESIGNED BY: C. CARLSON	CHECKED BY: C. CARLSON
	se064101	SHEET 12 OF 61



LAYOUT SHEET