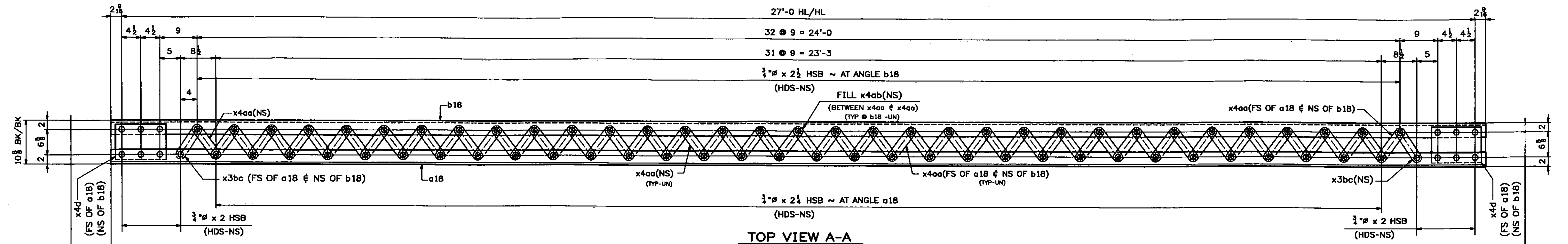
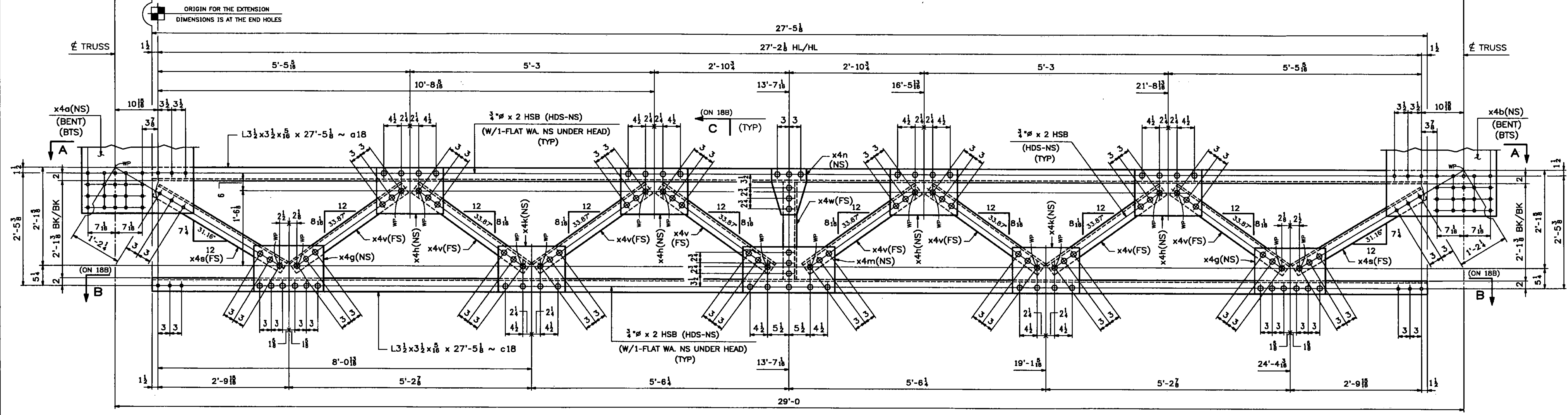


159 STRUCTURAL STEEL



TOP VIEW A-A



FRONT VIEW OF PORTAL
(LOOKING TOWARDS THE CENTER OF SPAN)

2 - PORTALS - 18PA1
(END PORTALS @ U1 & U1')

SHOP NOTE:
ALL STEEL FOR PORTAL ASSEMBLIES SHALL BE GALVANIZED

- NOTES:
1. FOR GENERAL NOTES SEE DWG. GN1.
 2. FOR STANDARD DETAILS SEE DWG. X4.
 3. ALL BOLTS SHALL BE FULLY TORQUED (UN).
 4. BTS - DENOTES BOLT TO SHIP OR SECURE FOR SHIPMENT.
 5. HDS - DENOTES BOLT HEADS.

Vermont Agency of Transportation
RECEIVED
CK'D BY TCF OK'D BY SSS
7:43 am, Apr 12, 2011
RESUBMIT _____ APPROVED X
BY KMH DATE 4-12-11

REV.	DATE	REMARKS	DWN	CHK	APVL	SHOP
1	03/24/11	REVISED BEVELS & ANGLES	JM	PWR		
2	03/02/11	REVISED AS PER APPROVAL COMMENTS	JM	PWR		
0						

MATERIAL:	M270-50 (U.N.)	SURFACE PREP. & PAINT:	SEE DWG GN1	HOLES:	1/8"	SHOP BOLTS:	AS NOTED
DESCRIPTION:	PORTALS						
CASCO BAY STEEL STRUCTURES, INC.							
75 SPRING HILL ROAD				SACO, MAINE 04072			
PHONE (207) 282-7360				FAX. (207) 282-1179			
STRUCTURE:	Vermont Route 100A Bridge No. 14 Bridgewater County of Windor			DRAWN:	RB	DATE:	10/7/10
				CHKD:	WJL	DATE:	10/19/10
LOCATION:	BRIDGEWATER, VERMONT			JOB NO.	18AB		
PROJ NO.	BRS 0149(4)			454	REV. 18AB		
CUSTOMER:	VT AOT						

WORK THIS DWG. WITH DWG. 18B.