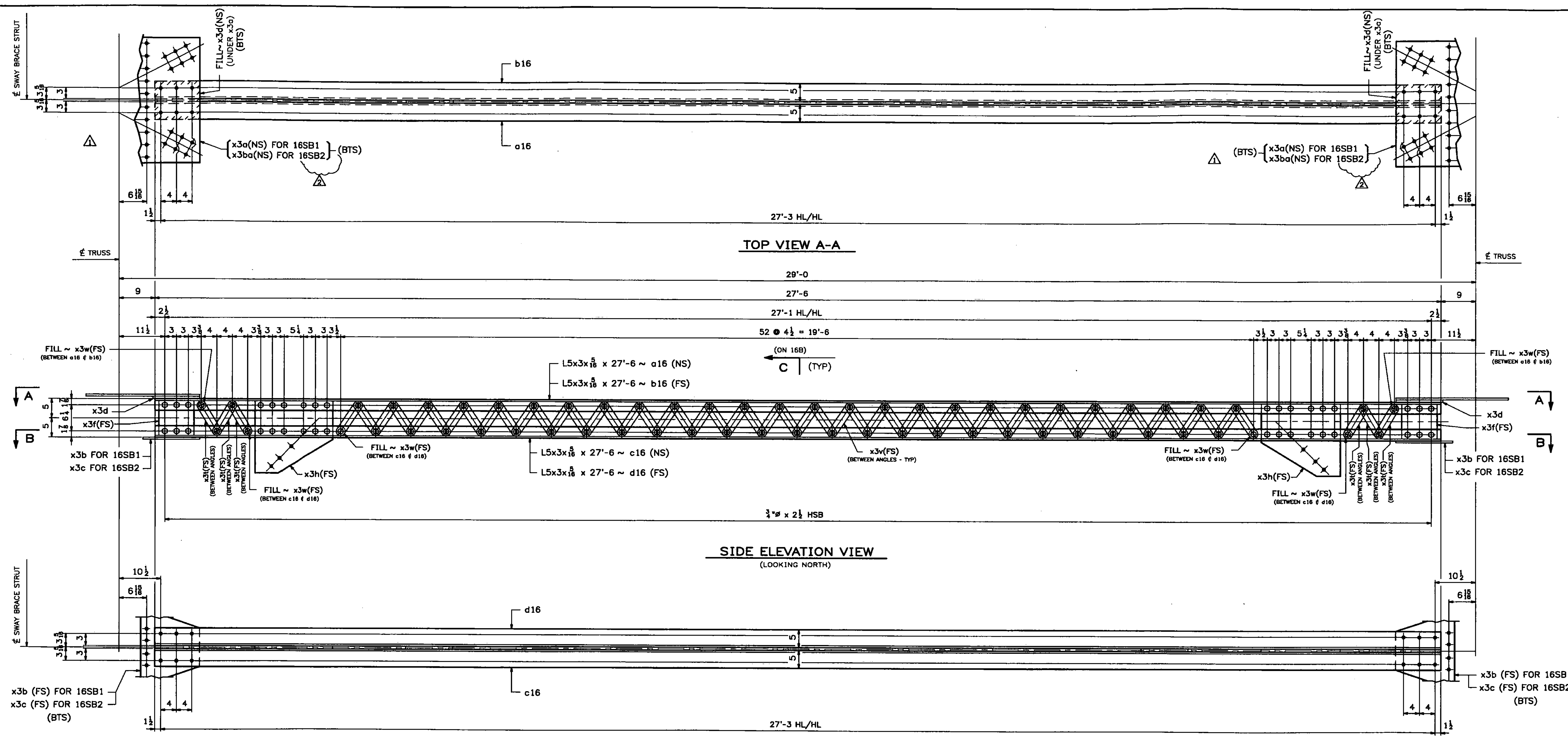


156 STRUCTURAL STEEL



- 2 - SWAY STRUTS - 16SB1**
 (SWAY BRACE TOP STRUTS @ U2 & U2')
- 2 - SWAY STRUTS - 16SB2**
 (SWAY BRACE TOP STRUTS @ U3 & U3')

Vermont Agency of Transportation
RECEIVED
 CK'D BY TCF OK'D BY SSS
 7:43 am, Apr 12, 2011
 RESUBMIT _____ APPROVED X
 BY KMH DATE 4-12-11

MATERIAL: M270-50 (U.N.)	SURFACE PREP. & PAINT: SEE DWG GN1	HOLES: 1 1/8"	SHOP BOLTS: AS NOTED
DESCRIPTION: SWAY BRACE TOP STRUTS			
CASCO BAY STEEL STRUCTURES, INC. 75 SPRING HILL ROAD SACO, MAINE 04072 PHONE (207) 282-7360 FAX. (207) 282-1179			
STRUCTURE: Vermont Route 100A Bridge No. 14 Bridgewater County of Windsor	DRAWN: RB	DATE: 10/5/10	
LOCATION: BRIDGEWATER, VERMONT	CHKD: WJL	DATE: 10/19/10	
PROJ NO. BRS 0149(4)	JOB NO. 454	DWG NO. 16AB	
CUSTOMER: VT AOT		REV.	

SHOP NOTE:
 ALL STEEL FOR SWAY BRACE ASSEMBLIES SHALL BE GALVANIZED

- NOTES:**
- FOR GENERAL NOTES SEE DWG. GN1.
 - FOR STANDARD DETAILS SEE DWG. X3.
 - ALL BOLTS SHALL BE FULLY TORQUED (UN).
 - BTS - DENOTES BOLT TO SHIP OR SECURE FOR SHIPMENT.
 - HDS - DENOTES BOLT HEADS.

WORK THIS DWG. WITH DWG. 16B.

03/23/11	REVISED AS PER APPROVAL COMMENTS	JM	PWR		
03/02/11	REVISED AS PER APPROVAL COMMENTS	JM	PWR		
0					
REV. DATE	REMARKS	DWN	CHK	APVL	SHOP

11/11/10 10:23:28 AM 10/19/10 10:23:28 AM 10/19/10 10:23:28 AM