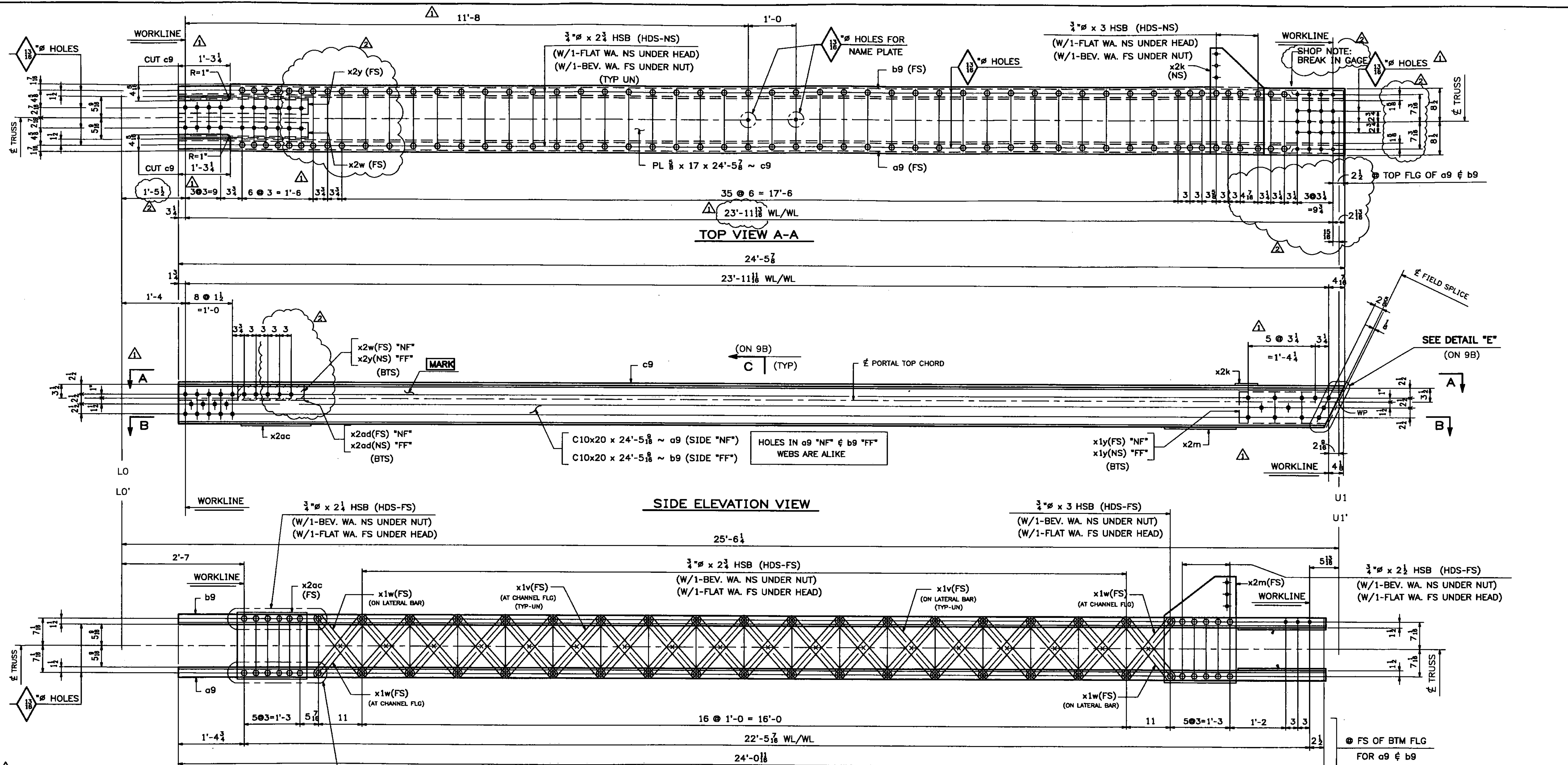


STRUCTURAL  
147 STEEL



Vermont Agency of Transportation

**RECEIVED**

CK'D BY TCF OK'D BY SSS

7:43 am, Apr 12, 2011

RESUBMIT APPROVED X  
BY KMH DATE 4-12-11

ONE - PORTAL TOP CHORD - 9D1E  
(LO-U1 EAST)  
ONE - PORTAL TOP CHORD - 9D9W  
(LO-U1 WEST)

ALIKE EXCEPT  
FOR MARK

SHOP NOTE:

ALL STEEL FOR PORTAL TOP CHORD  
ASSEMBLIES SHALL BE GALVANIZED

NOTES:

- FOR GENERAL NOTES SEE DWG. GN1.
- FOR STANDARD DETAILS SEE DWG. X1 & X2.
- "NF" - DENOTES NEAR FACE OF ASS'Y.
- "FF" - DENOTES FAR FACE OF ASS'Y.
- "BF" - DENOTES BOTH FACES OF ASSEMBLY.
- ALL BOLTS SHALL BE FULLY TORQUED (UN).
- BTS - DENOTES BOLT TO SHIP OR SECURE FOR SHIPMENT.
- HDS - DENOTES BOLT HEADS.

REV.	DATE	REMARKS	DWN	CHK	APVL	SHOP
03/23/11		REVISED AS PER APPROVAL COMMENTS	JM	PWR		
03/02/11		REVISED AS PER APPROVAL COMMENTS	JM	PWR		
0						

WORK THIS DWG. WITH DWG. 9B.

MATERIAL:	SURFACE PREP. & PAINT:	HOLES:	SHOP BOLTS:
M270-50 (U.N.)	SEE DWG GN1	1/8" Ø (U.N.)	AS NOTED
DESCRIPTION: PORTAL TOP CHORD 9D1E & 9D9W			
<b>CASCO BAY STEEL STRUCTURES, INC.</b>			
75 SPRING HILL ROAD		SACO, MAINE 04072	
PHONE (207) 282-7360		FAX. (207) 282-1179	
STRUCTURE:	Vermont Route 100A	DRAWN:	DATE:
	Bridge No. 14	RB	9/30/10
	Bridgewater	CHKD:	DATE:
	County of Windsor	WJL	10/19/10
LOCATION:	BRIDGEWATER, VERMONT	JOB NO.	DWG NO.
PROJ NO.	BRS 0149(4)	454	9AB
CUSTOMER:	VT AOT	REV.	△