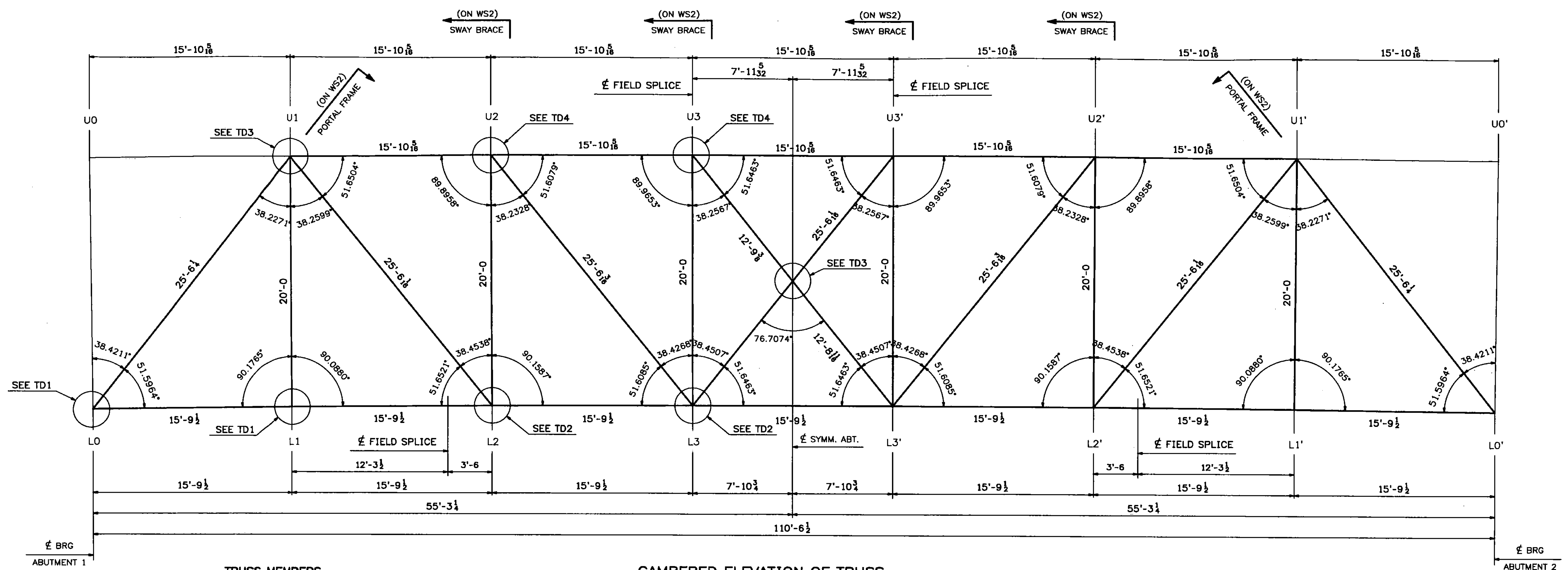


122 STRUCTURAL
STEEL



TRUSS MEMBERS

BOTTOM CHORDS	L0-L2	2~C9x20 (FCM)
	L2-L2'	1~PL 1/2 x 10 (FCM)
	L2'-L0'	
TOP CHORDS	U1-U3	2~C10x20
	U3-U3'	1~PL 3/8 x 17
	U3'-U1'	
VERTICALS	L0	W10x49
	L0'	
	L1-U1	
	L2-U2	
	L3-U3	
	L3'-U3'	
	L2'-U2'	
L1'-U1'		
DIAGONALS	L2-U1	2~WT4x15.5
	L2'-U1'	
	L3-U2	
	L3'-U2'	
	L3-U3	
PORTAL TOP CHORD	L0-U1	2~C10x20
	L0'-U1'	1~PL 3/8 x 17

CAMBERED ELEVATION OF TRUSS
(LOOKING WEST)

Vermont Agency of Transportation
RECEIVED
CK'D BY TCF OK'D BY SSS
7:43 am, Apr 12, 2011
RESUBMIT APPROVED X
BY KMH DATE 4-12-11

NOTE
THE PURPOSE OF THIS DRAWING IS TO COORDINATE GEOMETRIC CONTROL INFORMATION. THIS DWG IS SUBMITTED FOR INFORMATION ONLY AND IS NOT INTENDED FOR SHOP FABRICATION.

- NOTES
1. ALL DIMENSIONS ARE TAKEN ALONG THE CENTERLINE OF MEMBER, WITH CORRECTIONS MADE FOR GRADE & DL CAMBER (UN).
 2. TRANSVERSE DIMENSIONS ARE IN A HORIZ. PLANE (UN).
 3. ALL ANGLES ARE BASED ON THE CAMBERED SHAPE.
 4. FOR LAYOUTS SEE "TD" DRAWINGS.
 5. FCM - DENOTES FRACTURE CRITICAL MATERIAL.

02/18/11	REVISED DIAGONALS AS PER APPROVAL	JM	PWR			
10/14	REVISED VERTICALS AT L0,L0'	RB	WJL			
0						
REV.	DATE	REMARKS	DWN	CHK	APVL	SHOP
MATERIAL:		SURFACE PREP. & PAINT:	HOLES:		SHOP BOLTS:	
DESCRIPTION: TRUSS ELEVATION - CAMBERED						
CASCO BAY STEEL STRUCTURES, INC.						
75 SPRING HILL ROAD SACO, MAINE 04072						
PHONE (207) 282-7360 FAX. (207) 282-1179						
STRUCTURE: Vermont Route 100A		DRAWN: RB		DATE: 9/7/10		
Bridge No. 14		CHKD: WMJ		DATE: 9/27/10		
Bridgewater						
County of Windsor						
LOCATION: BRIDGEWATER, VERMONT			JOB NO. 454		DWG NO. WS1	
PROJ NO. BRS 0149(4)					REV. 1	
CUSTOMER: VT AOT						