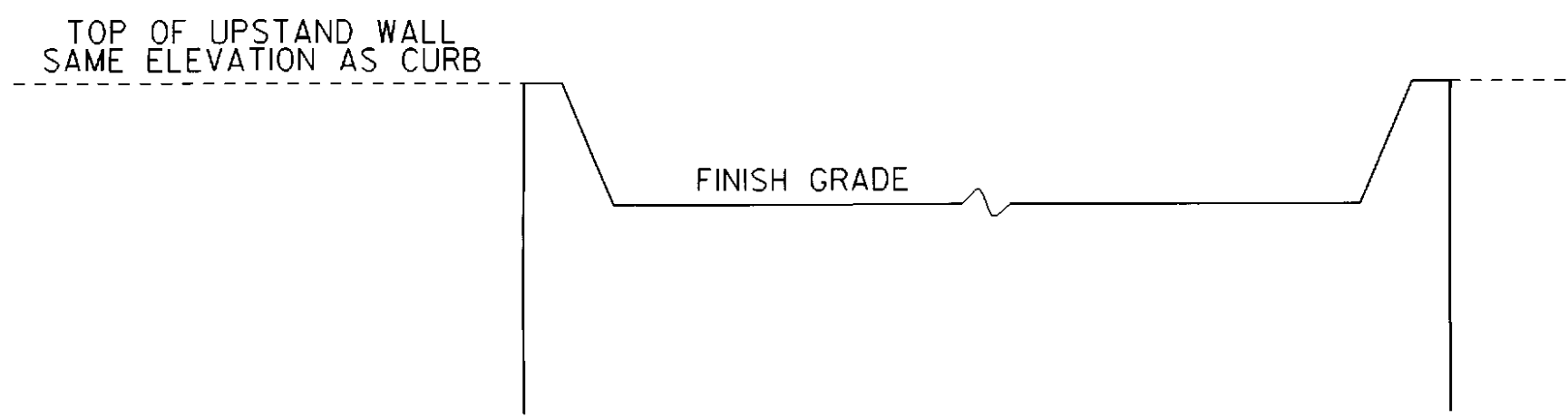


ABUTMENT #1
MALE END OF BRIDGE
 (ABUTMENT IS SYMMETRICAL ABOUT THE CENTERLINE OF THE TRAVELED WAY.)

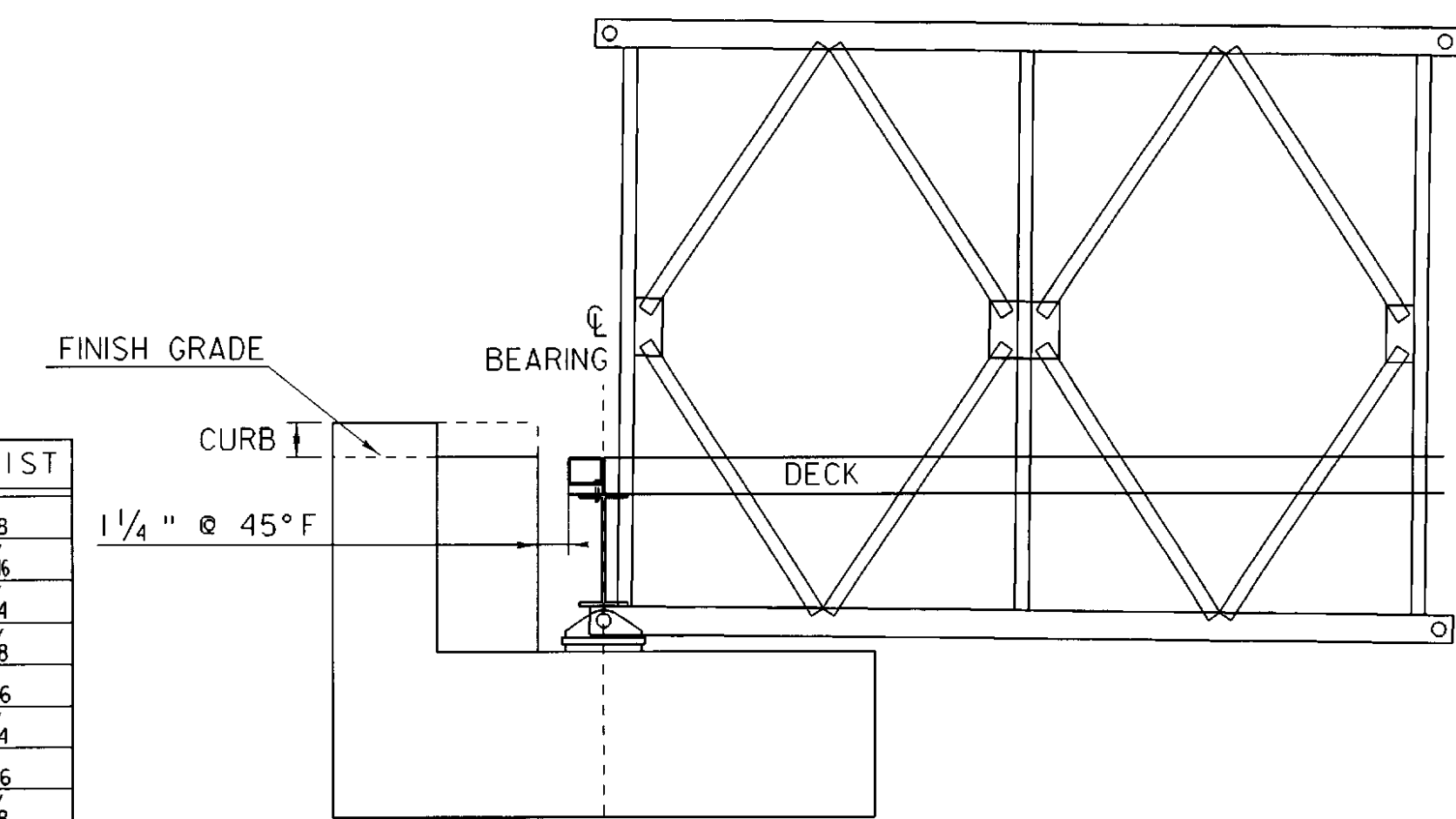
EACH	SIZE	LENGTH	MARK	TYPE	A	B	C	D
ABUTMENT #1								
14	5	25'- 6"	1A501	STR	25'- 6"			
52	5	6'- 0"	1A502	STR	6'- 0"			
54	5	3'- 11"	1A503	STR	3'- 11"			
12	5	7'- 0"	1A504	STR	7'- 0"			
6	5	14'- 0"	1A505	STR	14'- 0"			
23	5	4'- 3"	1A506	S10		1'- 9"	0'- 9"	1'- 9"
4	5	5'- 5"	1A507	S10		1'- 9"	1'- 11"	1'- 9"

APPROX 1220 LBS OF REINFORCING STEEL
 APPROX 16 CUBIC YARDS OF CONCRETE

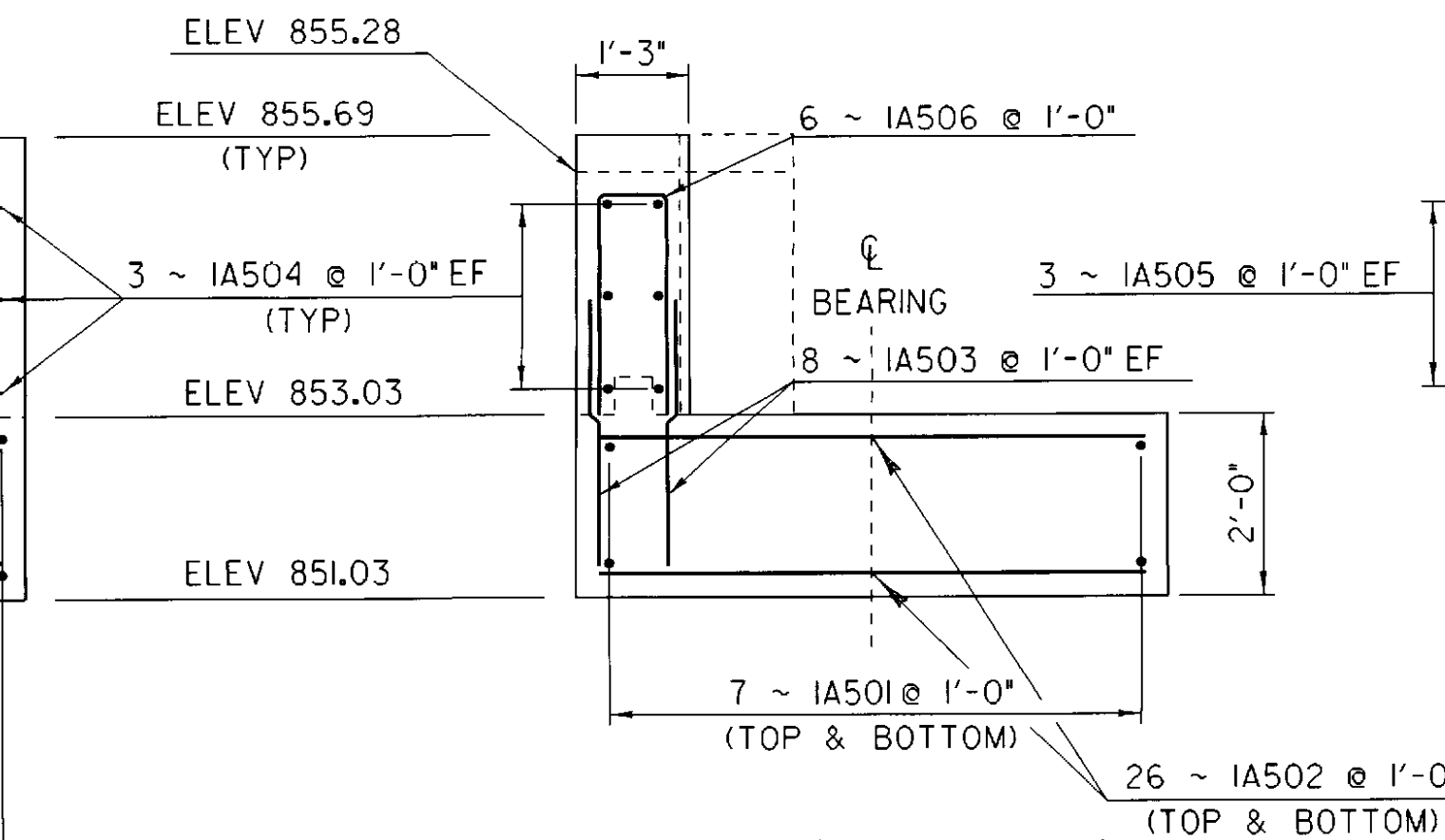
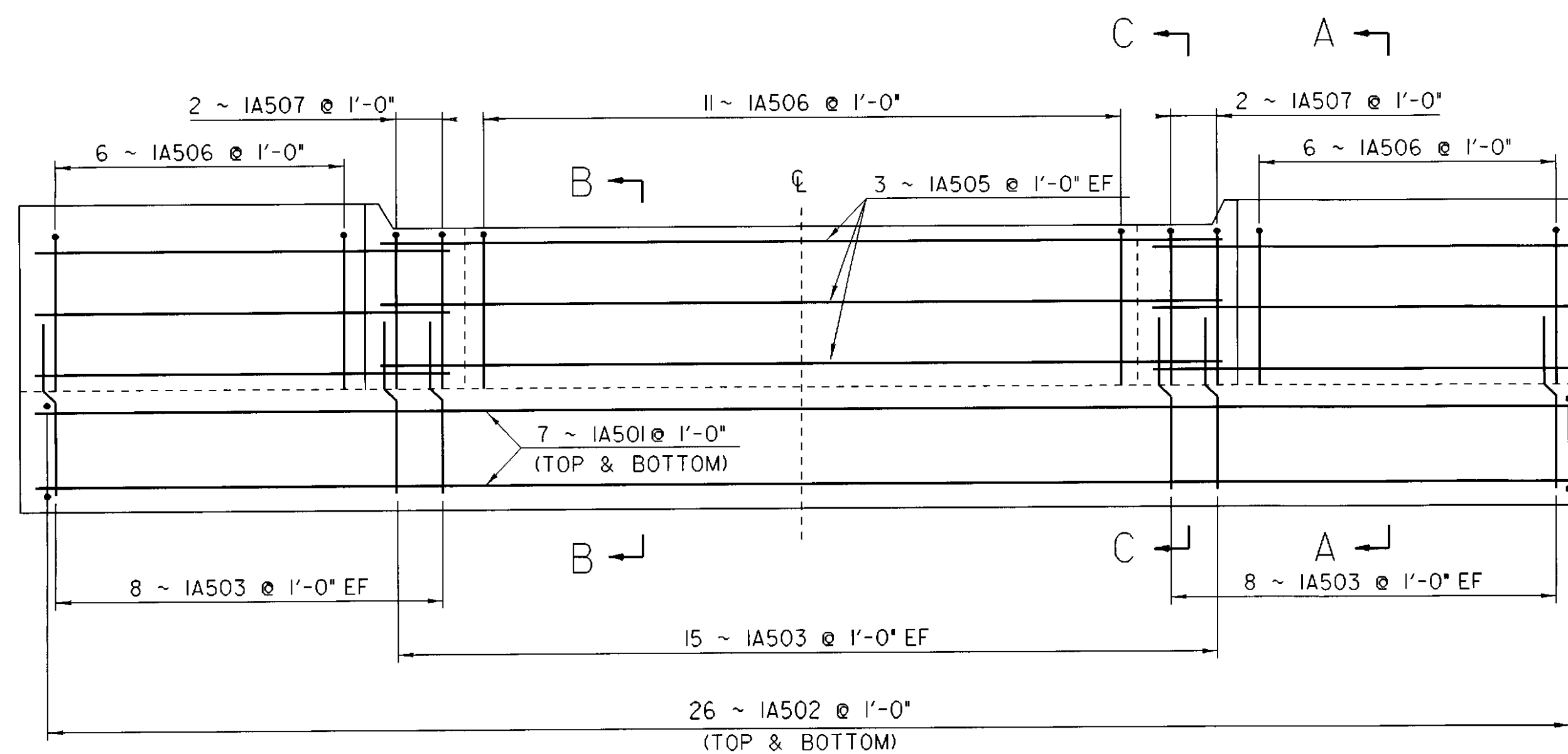


CURB DETAIL
 FORM TO MATCH SLOPE, ELEVATION & OFFSET OF BRIDGE CURB

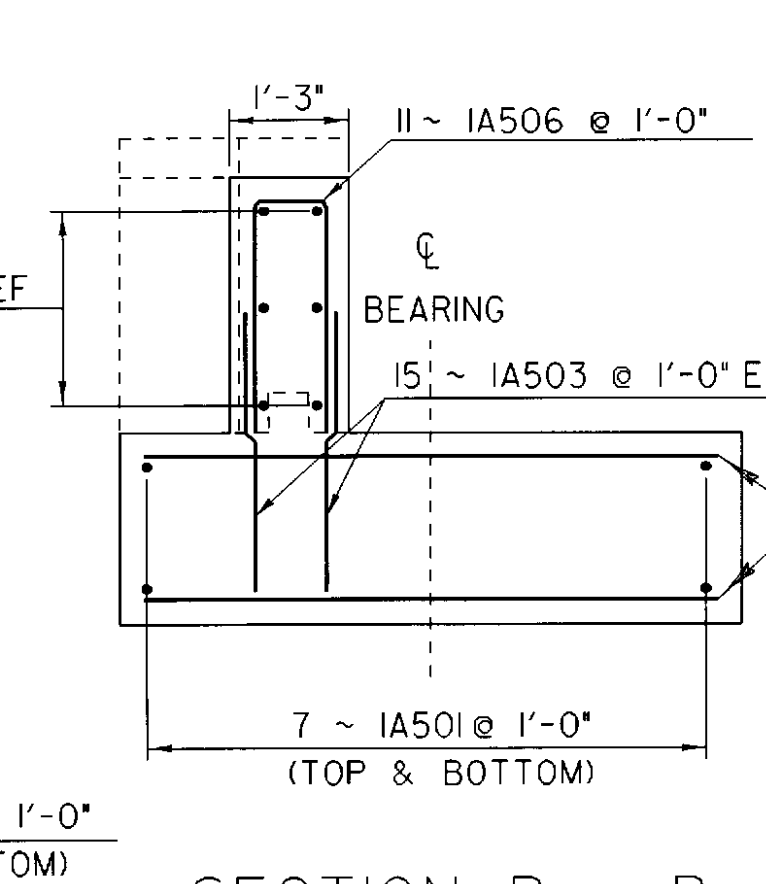
TEMP	"A" DIST
-30°F	2 1/8"
-15°F	1 5/8"
0°F	1 3/4"
15°F	1 5/8"
30°F	1 3/8"
45°F	1 1/4"
60°F	1 1/8"
75°F	0 7/8"
90°F	0 3/4"
105°F	0 5/8"
120°F	0 3/8"



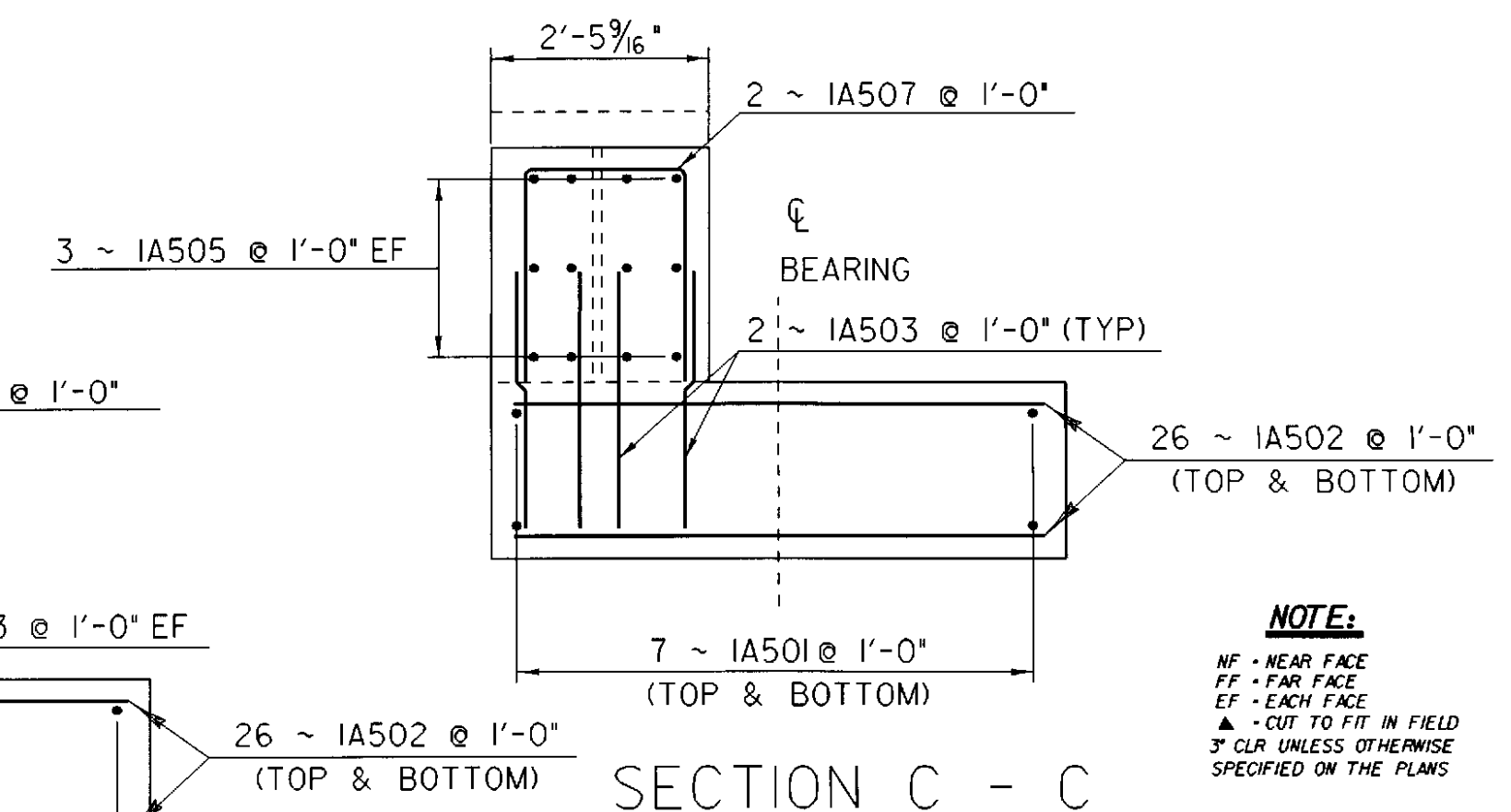
END OF BRIDGE DETAIL (EXP.)



SECTION A - A



SECTION B - B



SECTION C - C

NOTE:
 NF - NEAR FACE
 FF - FAR FACE
 EF - EACH FACE
 * - CUT TO FIT IN FIELD
 † - CUT UNLESS OTHERWISE
 SPECIFIED ON THE PLANS

ABUTMENT #1 DETAILS

PROJECT NAME:	BRIDGEWATER	PLOT DATE:	14-SEP-2005
PROJECT NUMBER:	BRS 0149(4)	DRAWN BY:	STR 5
FILE NAME:	86e062/se062abt.dgn	DESIGNED BY:	T. FILLBACH
PROJECT LEADER:	C.S. KELLER	CHECKED BY:	T. SUMNER
DESIGNED BY:	T. FILLBACH	SHEET	12 OF 18