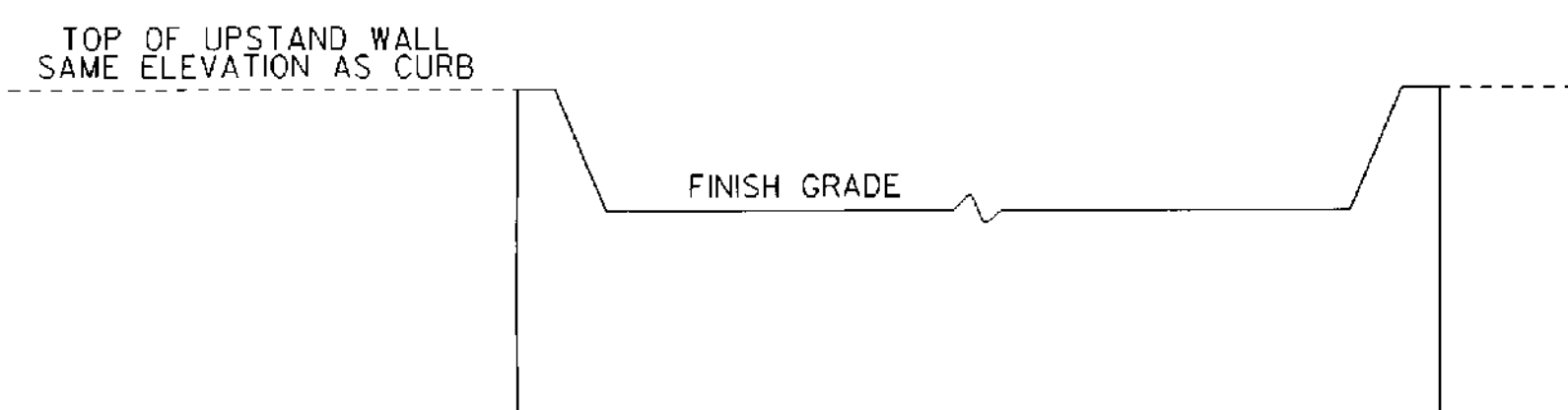


**ABUTMENT #1**  
**MALE END OF BRIDGE**

(ABUTMENT IS SYMMETRICAL ABOUT THE CENTERLINE OF THE TRAVELED WAY.)

EACH	SIZE	LENGTH	MARK	TYPE	A	B	C	D
<b>ABUTMENT #1</b>								
14	5	25'- 6"	1A501	STR	25'- 6"			
52	5	6'- 0"	1A502	STR	6'- 0"			
54	5	3'- 11"	1A503	STR	3'- 11"			
12	5	7'- 0"	1A504	STR	7'- 0"			
6	5	14'- 0"	1A505	STR	14'- 0"			
23	5	4'- 3"	1A506	S10		1'- 9"	0'- 9"	1'- 9"
4	5	5'- 5"	1A507	S10		1'- 9"	1'- 11"	1'- 9"

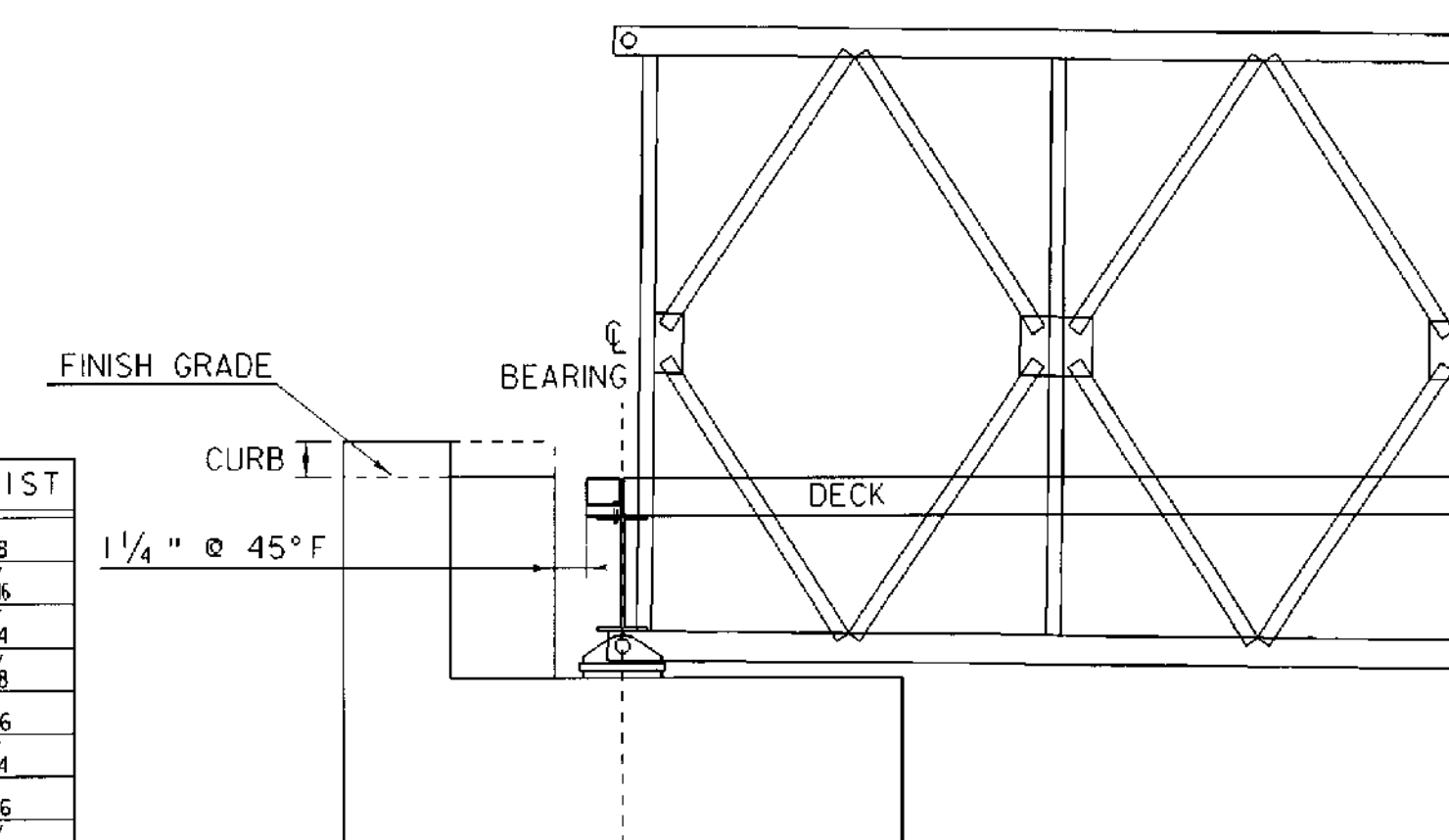
APPROX 1220 LBS OF REINFORCING STEEL  
 APPROX 16 CUBIC YARDS OF CONCRETE



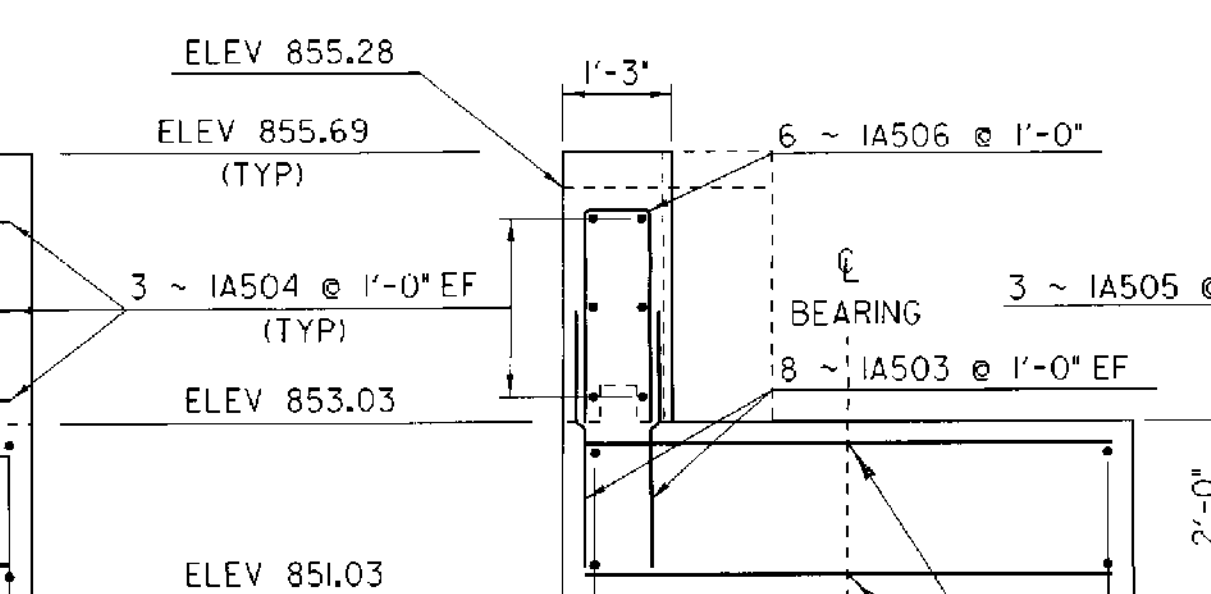
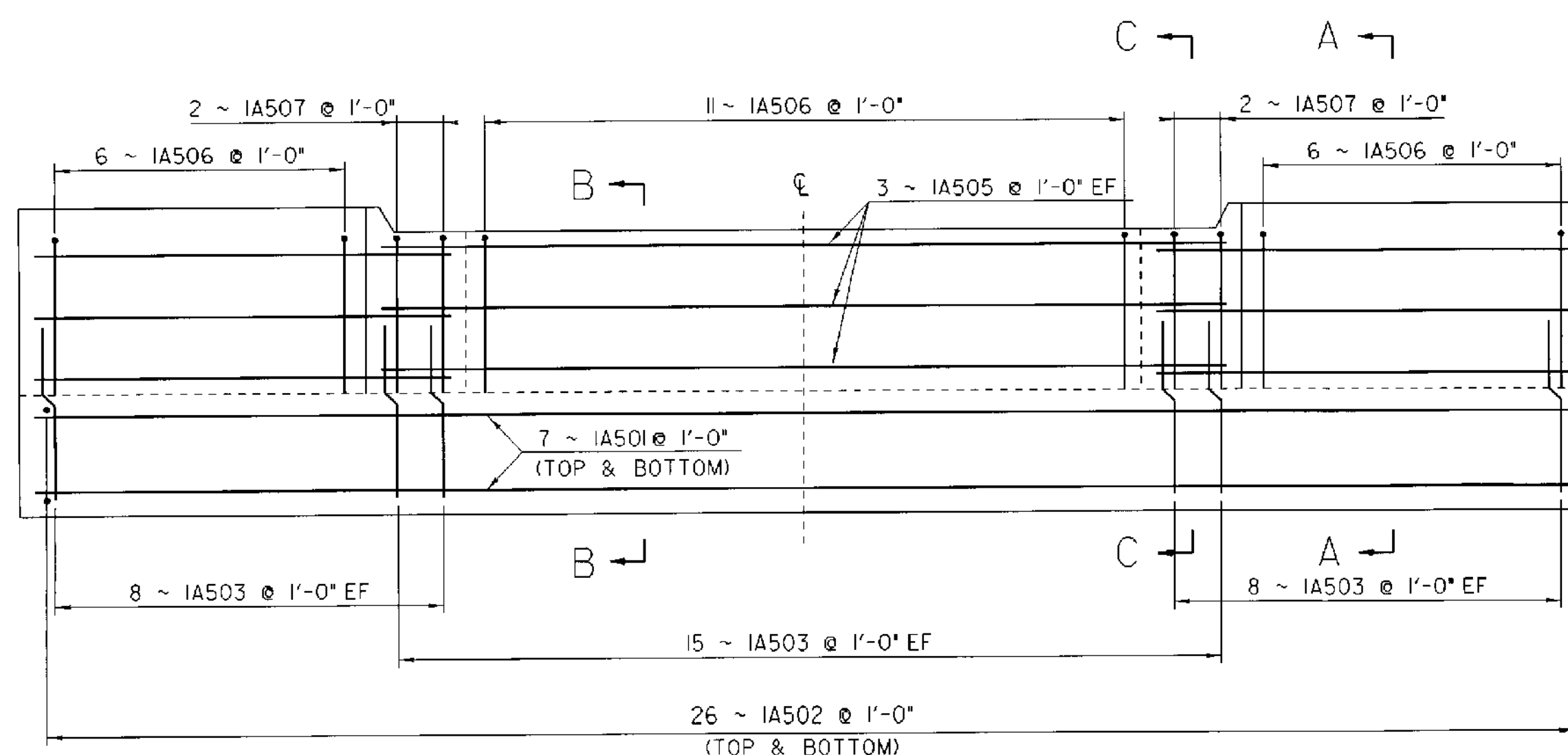
**CURB DETAIL**

FORM TO MATCH SLOPE, ELEVATION & OFFSET OF BRIDGE CURB

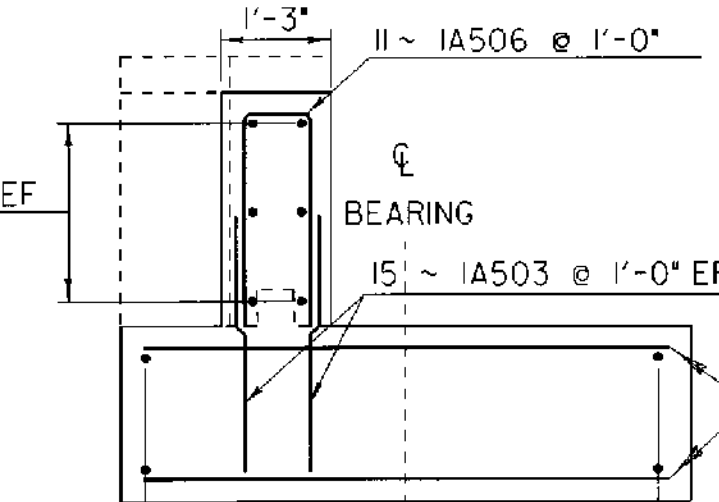
TEMP	"A" DIST
-30°F	2 1/8
-15°F	1 5/8
0°F	1 3/4
15°F	1 5/8
30°F	1 7/8
45°F	1 1/4
60°F	1 1/6
75°F	0 7/8
90°F	0 3/4
105°F	0 5/8
120°F	0 3/8



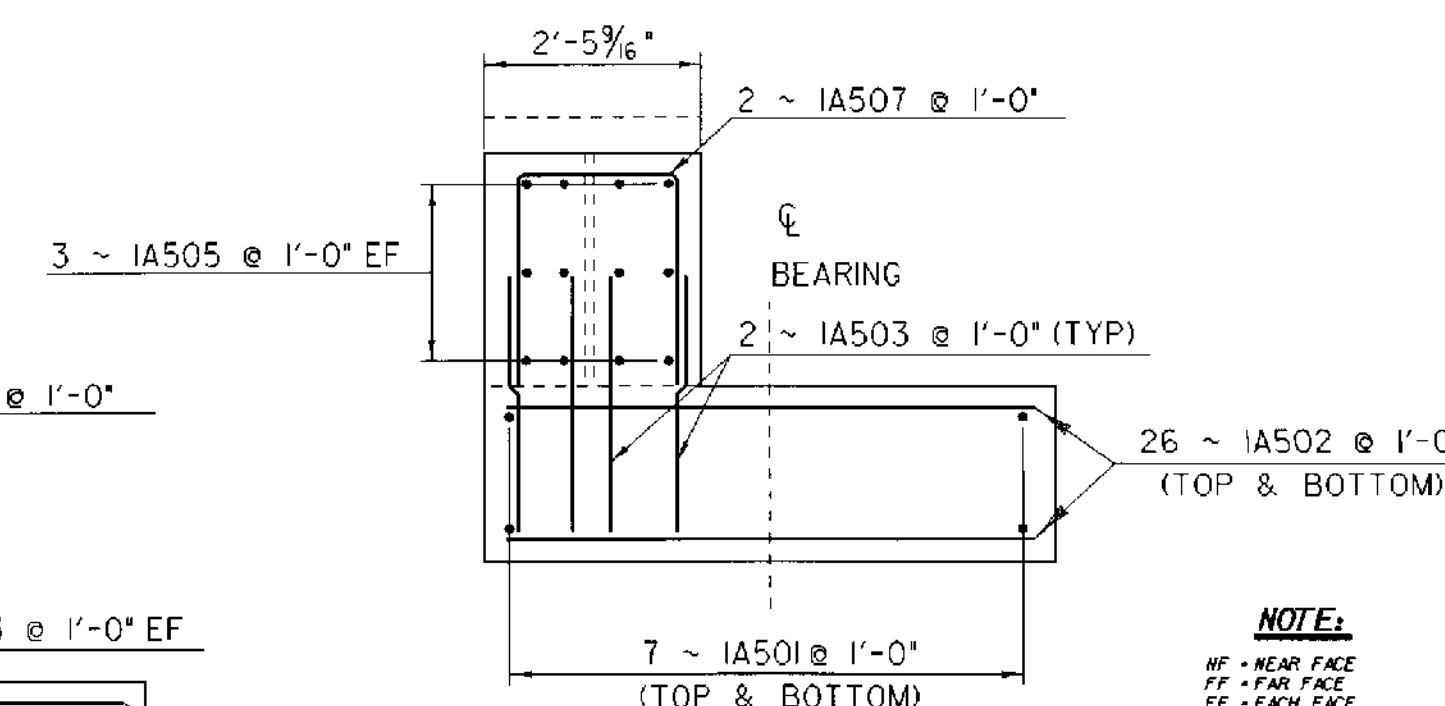
**END OF BRIDGE DETAIL (EXP.)**



**SECTION A - A**



**SECTION B - B**



**SECTION C - C**

**NOTE:**  
 HF - NEAR FACE  
 FF - FAR FACE  
 EF - EXTERIOR FACE  
 \* - CUT TO FIT IN FIELD  
 † - CUT UNLESS OTHERWISE  
 SPECIFIED ON THE PLANS

**ABUTMENT #1 DETAILS**

PROJECT NAME: BRIDGEWATER  
 PROJECT NUMBER: BRS 0149(4)  
 FILE NAME: 86e062/se062abt.dgn  
 PROJECT LEADER: C.S. KELLER  
 DESIGNED BY: T. FILLBACH  
 se062abl.i  
 PLOT DATE: 14-SEP-2005  
 DRAWN BY: STR 5  
 CHECKED BY: T. SUMNER  
 SHEET 12 OF 18